



Date: 25th August, 2022

Preface

This Participatory Land Use Plan (**PLUP**) for Chiweza Ward is a document that has been developed with a view to managing and mitigating unsustainable natural resource use. The aim of this document is to help communities in making sound decisions pertaining to land uses. This PLUP process has been supported by the Zambia Integrated Forests and Landscape Project (**ZIFLP**), an initiative of the Government of the Republic of Zambia, with funding support from World Bank through the Bio-Carbon Fund, Global Environmental Facility (**GEF**) and International Development Association (**IDA**).

PLUP activity falls under component 1: **Enabling Environment**. This first component is meant to create conditions that will allow the livelihood investments of Component 2 (**Livelihood and Low-Carbon Investments**) to be successfully implemented and that will prepare Zambia for emission reduction purchases. This component includes support for two sub-components under which PLUP falls. These are:

- a. District and Local Level Planning, which supports Integrated District Development.
- b. Local Planning, including land use and action planning through participatory processes.

The process for the creation of this PLUP was participatory in nature taking into account Social Biodiversity Impact Assessment (**SBIA**), and various stakeholders such as His Royal Highness **Chief Ndake** of Ndake Chiefdom, Nyimba District Multi-sectoral Team (**DMT**), Department of Physical Planning, Chiweza Ward community Members and ZIFLP team were consulted and engaged and were fully involved at every stage of the process. Thus, this PLUP will help guide Chiweza Ward residents in implementing sustainable and environmentally friendly land use practices in their ward, and also help in addressing the key issues identified, which have so far led to the unsustainable resource usage. This PLUP will help residents find alternative livelihood sources which will make them refrain from unsustainable land use practices such as unsustainable agriculture expansion, unplanned human settlement, environmental degradation and deforestation. This will help in the realisation of ZIFLP vision, which is to improve rural livelihoods in Eastern Province by reducing Deforestation and Forest Degradation using low emission pathways through local participation by 2030.

It is further hoped that the local people in the community will appreciate the benefits of having the Land Use Plan (**LUP**), bearing in mind that land is a scarce resource with competing uses which are mutually exclusive. Additionally, population growth, erosion, effects of climate change and other factors have contributed to the increasing scarcity of fertile land in rural areas despite people deriving their livelihoods from there. Thus, this PLUP is a way of balancing up competing and, in some cases, conflicting land uses.

Council Secretary
Nyimba District Council

District Commissioner
Nyimba District

HRH Chief Ndake
Ndake Chiefdom

Table of Contents

Preface	i
Table of Contents	iii
Table of Figures	vii
List of Tables	viii
Acknowledgements	ix
Acronyms and Abbreviations	x
1. Introduction	1
1.1 Background	2
1.3 Legal Context	3
2. Approach and Methodology	3
2.1 Stages of PLUP Activity	6
3. Characteristics of the Management Area	8
3.1 Location of Chiweza Ward	8
3.2 Climatic Conditions	9
3.2.1 Temperature	9
3.2.2 Rainfall	10
3.2.3 Ecological Zone	10
3.2.4 Soil Types	11
3.3 Socio-Economic Environment	12
3.3.1 Population Projection	13
3.3.2 Social Facilities	13
3.4 Source of Livelihood	14
3.5 Livelihood Security	15

3.6 Livelihood and Natural Resource Utilisation	15
3.7 Livelihood Constraints and opportunities	16
3.8 Biodiversity Hotspots	17
3.8.1 Streams and Dams	17
3.8.2 Forests	17
3.9 Ecosystem Function	18
4. Current Land Use Patterns	19
4.1 Overall Land Use	19
4.2 Land Use Suitability Analysis	20
4.2.1 Soil Type Agricultural Suitability Analysis	20
4.3 Land Resource and Administrative Boundaries	21
4.4 Current Land Uses	22
4.5 Land Use and Agriculture	23
4.6 Land Use and Forest	24
4.7 Land Use and Wildlife	25
4.8 Land Use and Mining	26
4.9 Land Use and Tourism	26
4.10 Land Use and Physical Development	26
5. Community Participation	27
5.1 Community Engagement Process	27
5.2 Agreed Local Rules for Land Use and Resource Management	31
5.3 Problem Identification	31
6. Core Issues Affecting Land Use and the Environment	32

6.1 Lack of Safe Water Sources	33
6.2 Soil Degradation	34
6.3 Poor State of Roads and Related Infrastructure	35
6.4 Long Distances to Schools	35
6.5 Inadequate Health Facilities	37
6.6 Inadequate Telecommunications Facilities	38
7. Land Use Planning-Zoning, Validation and Governance Rules	40
7.1 Mpeta Community Meeting	40
7.2 Chiweza Community Meeting	42
7.3 Ghosite Community Meeting	45
7.4 Mombwe Community Meeting	46
7.5 Nyakaloko Community Meeting	48
8. Framework of the PLUP and Environmental Management Plan	51
9. Implementation Strategy	54
9.1 Capital Investment Projects	57
10. Institutional Arrangement for Plan Implementation	57
11. Conclusion	58
12. Glossary	59
12. 1. Natural Resources	59
12. 1.1. Vegetation	59
12. 1.2 Soils	59
12. 1.3 Water	59
12. 2. Climate	60
12. 2.1 Rainfall	60

12. 3. Land Use Planning	60
12. 4. Participatory Land Use Planning	61
12. 5. Livelihood	61
13. References	62
Annex 1: Chiweza Ward By-Laws on Land Use and Natural Resource Management	64
Annex 2: Meeting Attendance Registers	66
Indunas Meeting	66
First Village Meeting	69
Validation Meetings	91

Table of Figures

Figure 1: Location Map	8
Figure 2: Monthly Temperature Conditions for Chiweza Ward	9
Figure 3: Annual Rainfall Pattern for Chiweza Ward	10
Figure 4: Agro-Ecological Zones	11
Figure 5: Chiweza Soil Map	12
Figure 6: Spatial Distribution of Social Facilities in Chiweza Ward	14
Figure 7: Biodiversity Hotspots	18
Figure 8: Chiweza Ward Agricultural Suitability Analysis Map	21
Figure 9: Land Resource and Administration Boundaries	22
Figure 10: Current Land Uses	23
Figure 11: Land Use and Agriculture Map	24
Figure 12: Land Use and Forest	25
Figure 13: Land Use and Physical Development	27
Figure 14: Village Rapid Assessment Exercise	30
Figure 15: Distribution of Water Sources	34
Figure 16: Primary Education Facility Service Gap	36
Figure 17: Secondary Education Facility Service Gap	37
Figure 18: Health Facility Service Gap	38
Figure 19: Future Land Use Map for Mpeta Community Meeting	42
Figure 20: Future Land Use Map for Chiweza Community Meeting	44
Figure 21: Future Land Use Map for Ghosite Community Meeting	46
Figure 22: Future Land Use Map for Mombwe Community Meeting	48
Figure 23: Future Land Use Map for Nyakaloko Community Meeting	50

List of Tables

Table 1: Stages of PLUP Activity	7
Table 2: Monthly Temperature Conditions for Chiweza Ward	9
Table 3: Chiweza Ward Population	13
Table 4: Livelihood Constraints and Opportunities	17
Table 5: Land Use Reservation	20
Table 6: Problems Identified	32
Table 7: Attendance Statistics	40
Table 8: Land Reservations for Mpeta Community Meeting	41
Table 9: Land Reservation for Chiweza Community Meeting	43
Table 10: Land Reservations for Ghosite Community Meeting	45
Table 11: Land Reservations for Mombwe Community Meeting	47
Table 12: Land Reservations for Nyakaloko Community Meeting	49
Table 13: Environmental Management Plan	53
Table 14: PLUP Implementation Plan	56
Table 15: Capital Investment Projects	57
Table 16: Offences and Penalties	65

Acknowledgements

We the Consortium of Land Alliance comprising of Chipata District Land Alliance, Petauke District Land Alliance and Zambia Land Alliance Nyimba would like to express our gratitude to the Republic of Zambia for sourcing funding from the World Bank for the Zambia Integrated Forest Landscape Project (**ZIFLP**) through the Project Manager Mr Noel Muchimba, Department of Physical Planning, Ministry of Local Government through the Nyimba District Multi-Sectoral Team (**DMT**), His Royal Highness Chief Ndake, Chiweza Ward Development Committee and the community of Chiweza Ward.

Acronyms and Abbreviations

CDF – Constituency Development Fund
CSA – Climate Smart Agriculture
DMT - District Multi-Sectoral Team
EP - Eastern Province
EMP - Environmental Management Plans
FPIC - Free Prior Informed Consent
GPS - Global Positioning System
ICT – Information and Communications Technology
IDP – Integrated Development Plan
JICA - Japanese International Corporation Agency
JIDP – Joint Integrated Development Plan
LAP - Local Area Plan
LULC - Land Use Land Cover
LUP - Land Use Planning
NDP - National Development Plan
NRM - Natural Resource Management
OCC - Objection, Correction and Confirmation
ODK - Open Data Kit
PAD - Project Appraisal Document
PLUP - Participatory Land Use Planning
URP - Urban and Regional Planning
WDC - Ward Development Committee
ZIFLP - Zambia Integrated Forest Landscape Project

1. INTRODUCTION

Participatory Land Use Planning (PLUP) is an interactive process in which local communities can discuss and determine how to manage the land and other natural resources in their locality. Land Use Planning (LUP) can be defined as a process in which land is allocated for different uses ranging from residential, commercial, agriculture, etc. (PLUP manual, 2019). PLUP is an important decision-making tool for Natural Resource Management because it helps in defining suitable land uses which best balance ecological, economic and social objectives, thereby preventing land use and social conflicts. Thus, PLUP is of great importance if natural resources are to be effectively managed.

Currently, rural areas in Zambia are faced with challenges ranging from food insecurity, land conflicts, biodiversity protection while initiating economic growth, adapting to climate change as well as protecting people from natural disasters (JICA, 2011). Hence, PLUP is envisioned to be a great tool capable of mitigating the above challenges by focusing on conducting discussions with relevant stakeholders on future land and resource use as well as management by allocating specific areas for different human activities.

Thus land use allocation is important, owing to the fact that land is a scarce resource with a fixed supply despite demand increasing on a daily basis (thereby bringing about land-related conflicts). Therefore, this PLUP aims at guiding and helping in tackling land-related conflicts as well as other natural resource issues in their early stages by facilitating consensual negotiations and eventual regulations on land uses by all interested parties.

The rationale and overall objective of conducting Participatory Land Use Planning on customary land is to consolidate information on the current status of land uses and land information within an area. The information gathered will subsequently inform land use options that are sustainable, environmentally compatible, socially desirable and economically sound. Further, the exercise helps in bringing out social and environmental issues affecting the communities in the project areas so as to design appropriate interventions to mitigate those effects.

1.1 Background

The Zambia Integrated Forest Landscape Project (**ZIFLP**) embarked on supporting the implementation of Participatory Land Use Planning (**PLUP**) in districts of Eastern Province (**EP**), focusing on community land use mapping and planning. This was the basis for the identification of primary Sub-District level activities, including issues of identification, prioritisation and sub-project identification (PLUP Manual, 2019).

ZIFLP took into consideration and followed the present government direction on land use aimed at optimising the use of land, helping with resolution of conflicts which arise between competing land uses and needs of various interest groups, choosing sustainable options that best meet identified needs, rehabilitating and conserving natural resources, supporting the general development process and raising awareness concerning environmental problems among the populations and authorities (**ZIFLP-PAD**).

Additionally, this PLUP consolidated information on the current status of land use and land information within a project area, which provided information on land use options that are sustainable, socially and environmentally compatible, socially desirable and economically sound. The PLUP initiative is based on the current social, economic and environmental challenges and opportunities facing Zambia's customary areas.

Besides, Chiefs have a high level of autonomy in terms of land management in their chiefdoms, while at the same time depend on government for a range of services such as schools, clinics, etc. The PLUP development process recognizes the fact that Zambia's rural landscape is vast and viable for various investments. Thus, rural landscapes have the potential to provide multiple revenue sources ranging from small-scale farming, wildlife management and game ranching, forest timber extraction, tourism, and mining. It is important to note that there are a number of land uses competing with each other hence the need for a land use plan to serve as a guide for the use and management of land.

1.3 Legal Context

The Chiweza Ward PLUP has been developed in accordance with the provisions of the Urban and Regional Planning (URP) Act No. 3 of 2015 of the Laws of Zambia. The URP Act is the main legislation that guides planning and related activities in the country. The Act not only provides for the preparation of Integrated Development Plans (IDPs) for the development of each district but also provides for the preparation of Local Area Plans (LAPs) which are actually Land Use Plans for sections of a settlement, sub-areas, sub-districts or wards within a Local Authority's area. Areas under Traditional Authorities are governed by Section 25 of the Urban and Regional Planning Act No. 3 of 2015 of the Laws of Zambia.

Further, it provides guidance on the development of areas within land falling under customary tenure with the provision of developing planning agreements between traditional authority and relevant government authorities. However, there are other laws and policies that govern Land Use Planning in Zambia which were adhered to during the preparation of Chiweza Ward PLUP such as the Mines and Minerals Act No. 11 of 2015, Villages Act of 1972, Chiefs Act, Cap. 287, Agriculture Act, National Decentralisation Policy (**NDP**) of 2013, Forest Act No. 4 of 2015 and Zambia Wildlife Act No. 14 of 2015

2. APPROACH AND METHODOLOGY

The Participatory Land Use Planning in Chiweza Ward adopted the USAID Land Use Planning approach, which is a combination of primary and secondary data collection. The secondary data collection method involved reviewing various documents on land use planning and land uses held by various government departments and other cooperating partners. The primary data was collected through village meetings and field activities, through the involvement of traditional leaders, community members and key informants across a range of government institutions and non-state actors. Facilitation of this PLUP was done in the local language in order to contextualise the PLUP to the locality. The whole process was participatory as it involved all stakeholders who were either affected or had interest in the landscape of the project site.

The participatory approach was used in the development of the Chiweza Ward PLUP, where various relevant stakeholders were fully involved in the process. Planning was done with the community stakeholders together with their leaders (indunas and headpersons) in consultation with Chief Ndale. PLUP sensitization meetings were held with the Indunas, Headpersons, Chiweza Ward Development Committee and community members in order to collect socio-economic and environmental data on livelihood sources and security. These PLUP sensitization meetings were held in **five (5)** clustered focus group village meetings, namely: **Mpeta, Ghosite, Mombwe, Chiweza** and **Nyakaloko**. **50** villages were represented at the clustered village meeting. Community members in all the **five (5)** clustered meetings took a leading role in developing sketch maps, problem analysis through pair-wise ranking, identifying shared resources and validation of the maps.

The spatial and attribute data used were collected using mobile-based **Open Data Kit (ODK)** Collect forms, Android tablets and **GLO Garmins** while **QGIS 3.8.1**, **Google Earth Engine** and **ArcGIS 10.5** were used for data analysis.

The data captured is uploaded to the cloud-based server using any wireless connectivity so that data can be uploaded anywhere without necessarily coming to the office, especially when the field teams are camping.

The tablets have stored MB tiles (orthophoto images) with base maps for each district and the Community Facilitators whilst in the field can map any village including all shared communal resources and using the ODK application they can gather data on number of attendees disaggregated as male and female of any village or ward. Any hand-drawn land use maps by the communities are captured and uploaded to the cloud server so that the GIS team at the office can digitise the maps and produce land use maps. Each tablet in order to accurately pick the polygon points is connected to a handheld Garmin Glo Geographical Positioning System (**GPS**). Each community facilitator ensures that the polygon points are repeatedly captured/deleted until the point recorded is shown to be reasonably in the right location relative to the ortho-photo image.

Although there is capability to manually record the polygon points against the image, or to move captured GPS points, the GIS team may not do so until they meet the community facilitator who was in the field to clarify any captured polygon points issues.

2.1 Stages of PLUP Activity

No.	Activity	Objective	Strategy	Output	Target	Indicator
1	Village Identification (Rapid Village Assessments)	Know the total number of villages in the ward by picking points of interest	Physical Data Collection in all villages	50 Villages were identified	All Villages within Chiweza Ward boundary	Villages falling within the ward boundaries were captured
2	Sensitization to Indunas and Head Persons	Sensitise Indunas and Head Persons to fully accept PLUP	Indunas and Head Persons meeting	40 Indunas and Head Persons from Ndake Chiefdom were sensitised, comprising 31 males and 9 females.	All the Indunas in the Ward	Number of Indunas and Head Persons sensitised in the chiefdom of Ndake.
3	Community Sensitization	Sensitise communities on PLUP	Community meetings	One (1) Community Meeting for each of the 5 Village Clusters.	Community members in all the 5 Village Clusters	377 Total Number of community representatives sensitised across the ward disaggregated as 240 men and 137 women
4	Shared Resource Mapping	Collect geographical locations of the resources present in the community	Physical Spatial data collection	13 Shared Resource Maps were produced	Chiweza Ward	Shared Resource Mapping exercise completed in Chiweza Ward

5	Chiweza ward resource Map validation	Show the current shared resources, land uses and have the communities confirm the boundaries	Community engagement meetings for validation purposes.	Objections Corrections and Confirmation (OCC) done for the shared resource map in Chiweza Ward.	Objections Corrections and Confirmation (OCC) done at the Palace and in all the 3 village clusters	Shared Resource Map validated by the Chief and community representatives in the ward.
6	Future land use planning and Formulation of By-Laws	Develop maps of how communities envisage to sustainably use their natural resources.	Community meetings	Future Land Use Plan developed and By-Laws formulated	The whole Chiweza Ward	Future Land Use Plan and By-Laws done
7	PLUP approval	Have the plan approved by all relevant authorities in order to be implemented	Submit PLUP copies to both traditional and local authorities	PLUP approved	Chiweza Ward PLUP	PLUP approved by the Chief and Local Authority

Table 1: Stages of PLUP Activity

3. CHARACTERISTICS OF THE MANAGEMENT AREA

3.1 Location of Chiweza Ward

Chiweza Ward falls in Nyimba District which has a total of **15** wards, namely: **Chinsimbwe, Mombe, Katipa, Vizimumba, Mtilizi, Ngozi, Nyimba, Lwezi, Chiweza, Chinambi, Kaliwe, Chamilala, Msimba, Mphundwe** and **Luangwa**. Nyimba District lies between **13°30'** latitude and **14°45'** longitude, **31°** west and **32°** east, spans along the Great East Road Corridor and is characterised by mountainous topography and flat terrain. Chiweza Ward is a boundary ward, sharing an international boundary with The Republic of Mozambique in the South. It also shares boundaries with four wards, namely: Msimba, Lwezi, Mombe and Kaliwe. The map below shows the location of Chiweza Ward:

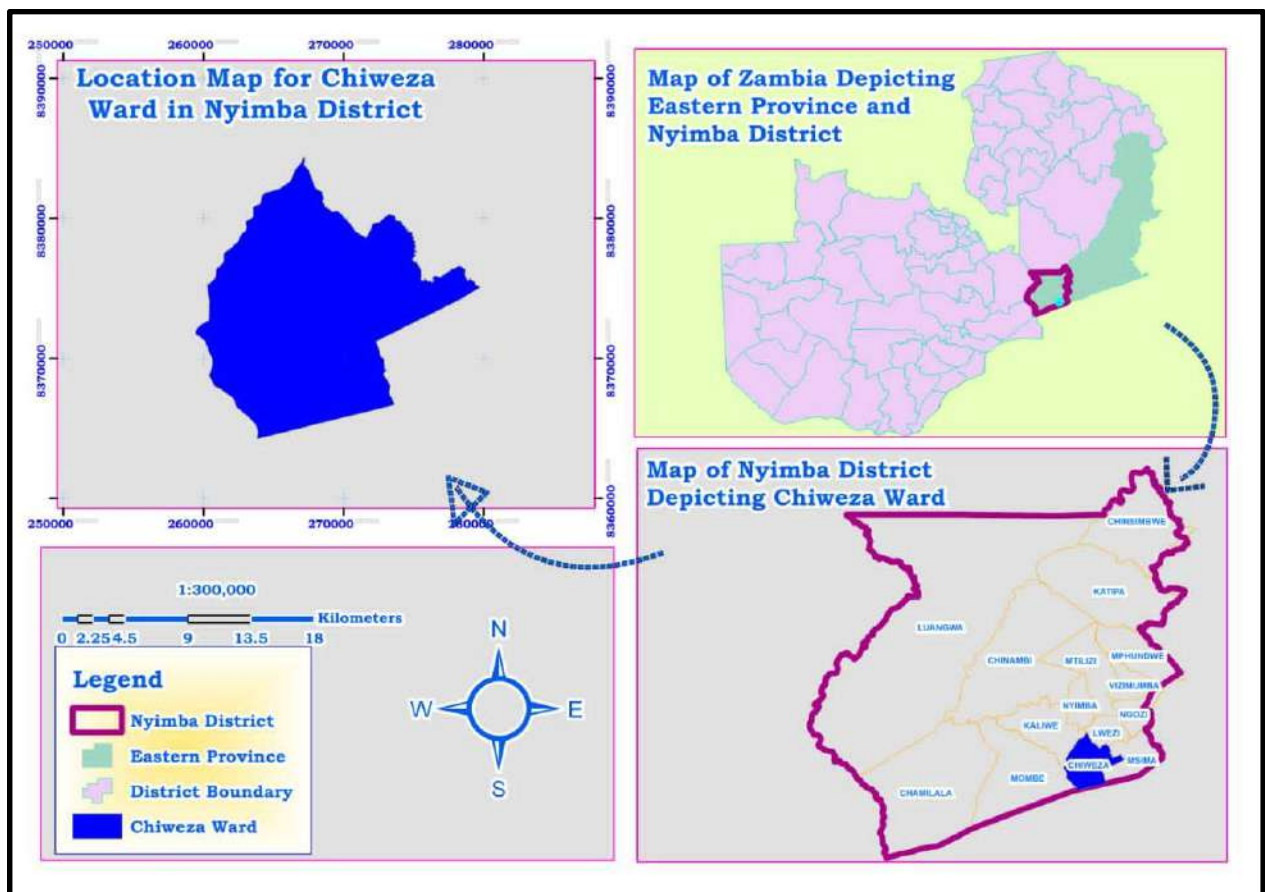


Figure 1: Chiweza Ward Location Map

3.2 Climatic Conditions

Chiweza Ward is characterised by a **Tropical Savanna** climate which is associated with the tropical wet and dry climate. The summers are much rainier than the winters in Chiweza with an average annual temperature of **23.4 °C** and annual rainfall of **1,051 mm**.

3.2.1 Temperature

The temperatures are highest on average in October, at around **27.7°C** and lowest in July, with temperature recordings of around **13.4°C**. Table 2 and figure 2 below show average temperatures for Chiweza Ward:

	Jan	Feb	Mar	April	May	June	July	Aug	Sept	Oct	Nov	Dec
Ave. Temp (°C)	23.4	23.3	22.9	22.1	21.0	19.6	19.5	22.6	25.9	27.7	26.8	26.4
Min. Temp (°C)	19.2	18.8	18.1	16.8	15.2	13.6	13.4	15.8	18.7	20.9	20.9	20.1
Max. Temp (°C)	27.6	27.7	27.6	27.3	26.8	25.5	25.6	29.3	33.0	34.5	32.7	32.7

Table 2: Monthly Temperature Conditions for Chiweza Ward

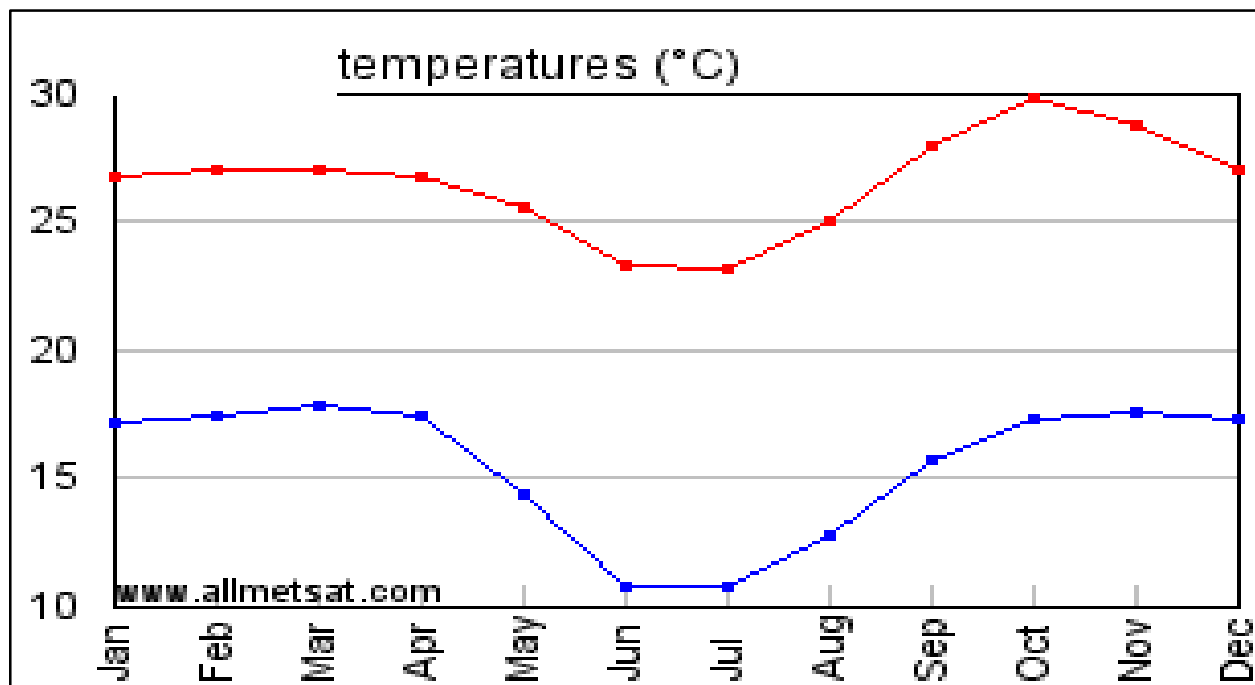


Figure 2: Monthly Temperature Conditions for Chiweza Ward

3.2.2 Rainfall

Chiweza Ward receives a total annual rainfall of about **1,051 mm**. There is high rainfall recorded during the wet season from November to February with average rainfall between **91-298 mm**. The variation in the precipitation between the driest and wettest months is **150 mm**. Figure 3 below shows rainfall patterns for Chiweza Ward:

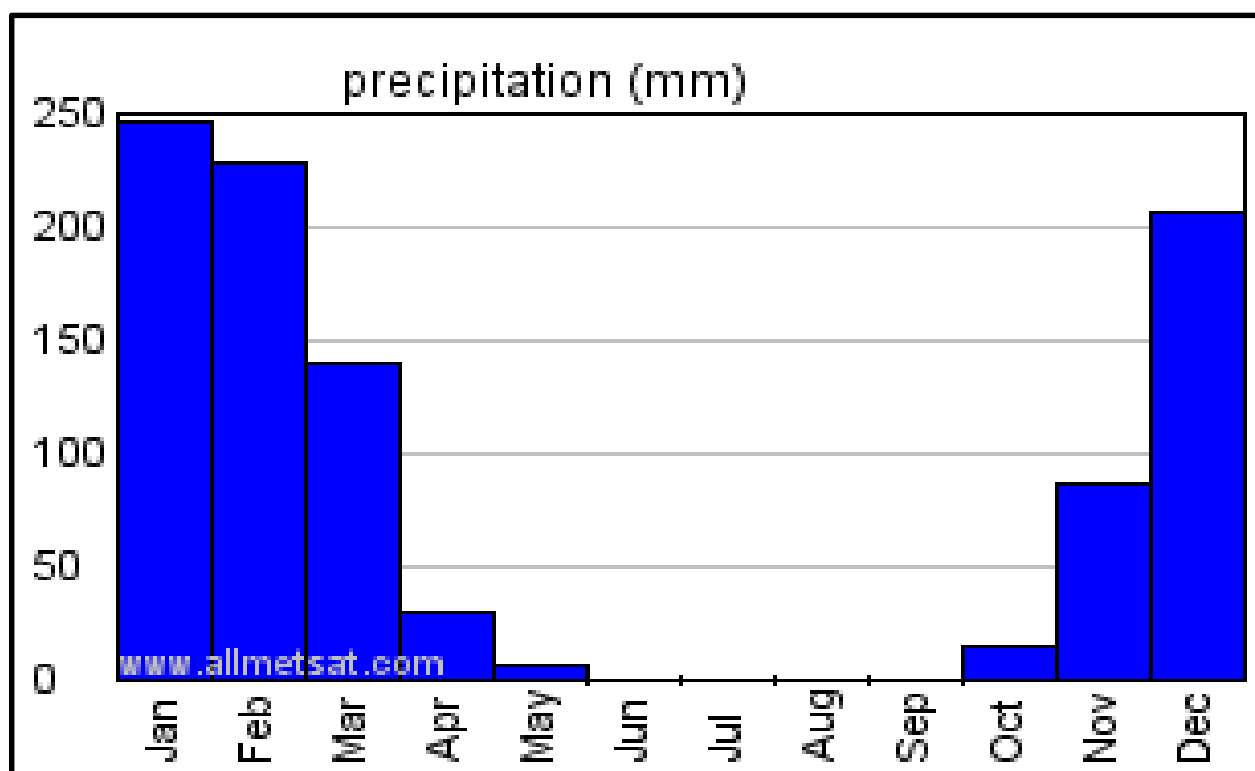


Figure 3: Annual Rainfall Pattern for Chiweza Ward

3.2.3 Ecological Zone

Zambia, as a country, is divided into three main Ecological Zones, which are: **Zone I**, **Zone II** and **Zone III**. Nyimba District is characterised by both the **I** and **Ila** Ecological Zones. Chiweza Ward, being located in Nyimba District, therefore falls under the **Ila** Ecological Zones, which is characterised by annual rainfall of between **800-1000 mm**, and has a growing season of **100-140** days. This Ecological Zone supports the growth of medium and late-maturity crop varieties such as maize, soya beans, groundnuts and other leguminous plants. The figure below shows the different Ecological Zones of Zambia:

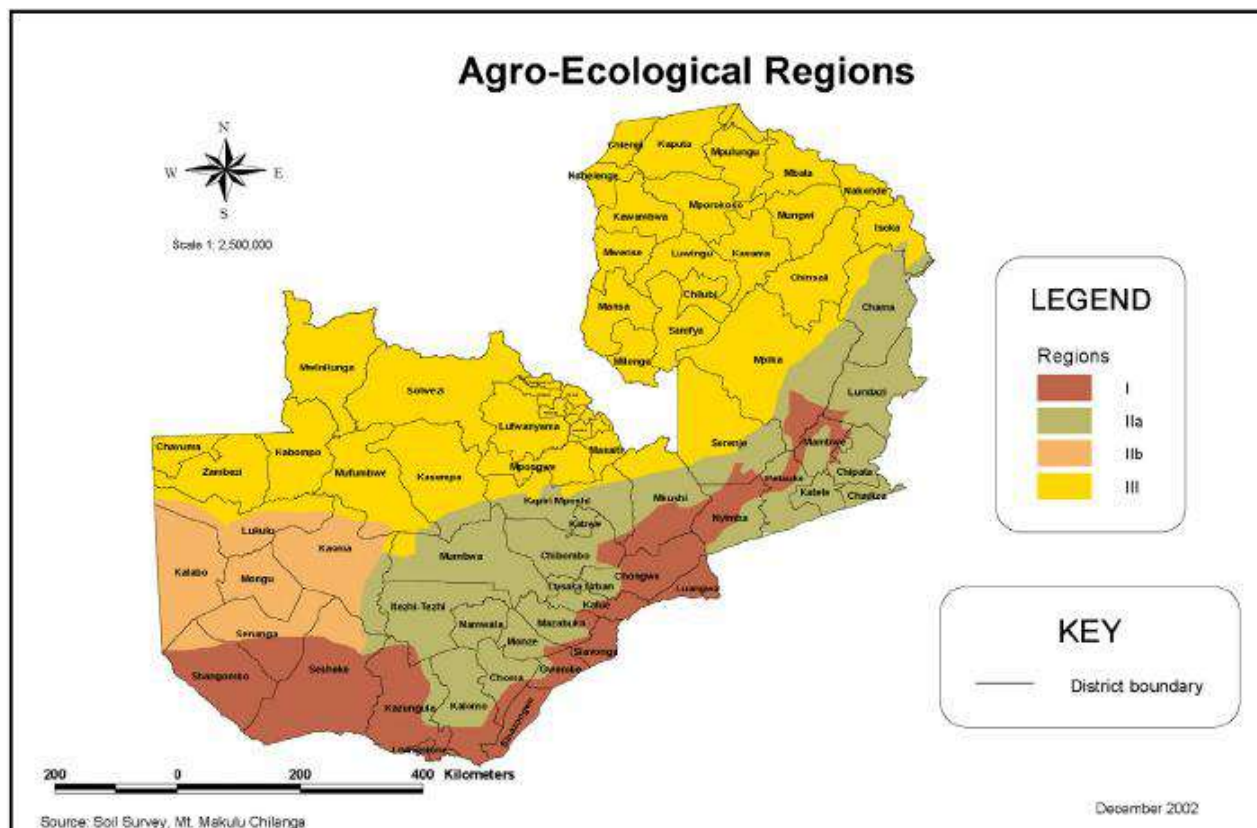


Figure 4: Agro-Ecological Zones

3.2.4 Soil Types

Nyimba District is dominated by four soil zones i.e. **Vertisol-Luvisol**, **Acrisol**, **Luvisol** and **Lithosol** Soil Zones. Chiweza Ward is covered by **Acrisols** and **Luvisols**. Thus all agricultural activities in Chiweza Ward are done in these Acrisols and Luvisols. The figure below shows a map of Chiweza Soil Types:

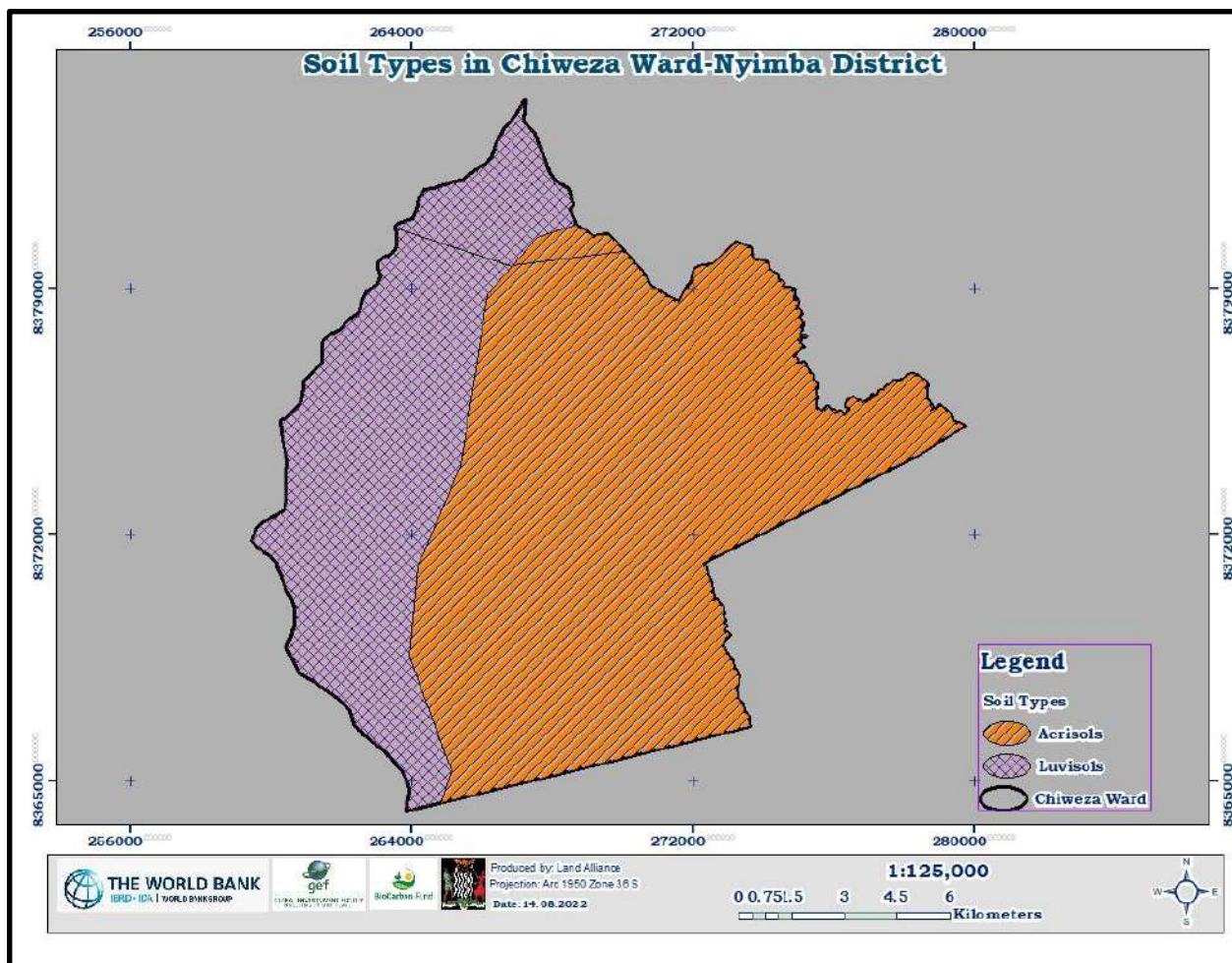


Figure 5: Chiweza Soil Map

3.3 Socio-Economic Environment

Chiweza ward covers a total area of **21,015.3** hectares. Settlements in the ward are dispersed with poor road networks, especially during the rainy season, as the areas become inaccessible because streams flood and there are no bridges/culverts (Nyimba IDP, 2021). Based on the village geo points collected, the ward has a total of **50** villages, and according to the 2017 Census of Population, Chiweza Ward had an estimated total population of **13,450** as shown in the table below:

POPULATION			
CHIWEZA	Male	Female	Total
	6,684	6,766	13,450
Source: Nyimba IDP, 2021			

Table 3: Chiweza Ward Population

3.3.1 Population Projection

For the purposes of projecting future services and land use needs, the population forecast was based on the national population projections (adjusted to reflect the population of Nyimba District at **2.8%** Growth rate as per 2017 Zambia Census projection.) On this basis, the population of Chiweza Ward was projected to increase to **15,021** and **19,259** in 2021 and 2030 respectively (Nyimba IDP, 2021).

This projected increase in population will not only require land for development of infrastructure and other services but will also increase pressure on ecologically sensitive areas such as forests and hills that serve as catchment areas as well as water recharge areas. This entails that more land will be opened up for agricultural purposes, which will potentially lead to forest degradation and loss of biodiversity, consequently contributing to severe climate change and its related effects. However, the impact of anticipated increase in agricultural activities on land can be managed through the promotion and adoption of Climate Smart Agriculture (**CSA**) practices, aimed at reducing agriculture land expansion while increasing crop yields.

3.3.2 Social Facilities

Chiweza Ward currently has **six (6)** schools out of which only **one (1)** is a secondary school, namely **Hofmeyr Secondary School** and the remaining five (5) are primary schools namely: **Ghosite, Mombwe, Nyakaloko** and **Chiweza Primary Schools** and **Tumbatwa Community School**. The ward currently has one (1) health facility, namely: **Hofmeyr Clinic**.

The ward also has 55 boreholes, 2 network towers, 9 football fields, 1 netball field, 7 graveyards, 4 hammermills, 27 churches, and 1 Community Shed. The map below shows the spatial distribution of social facilities in Chiweza Ward:

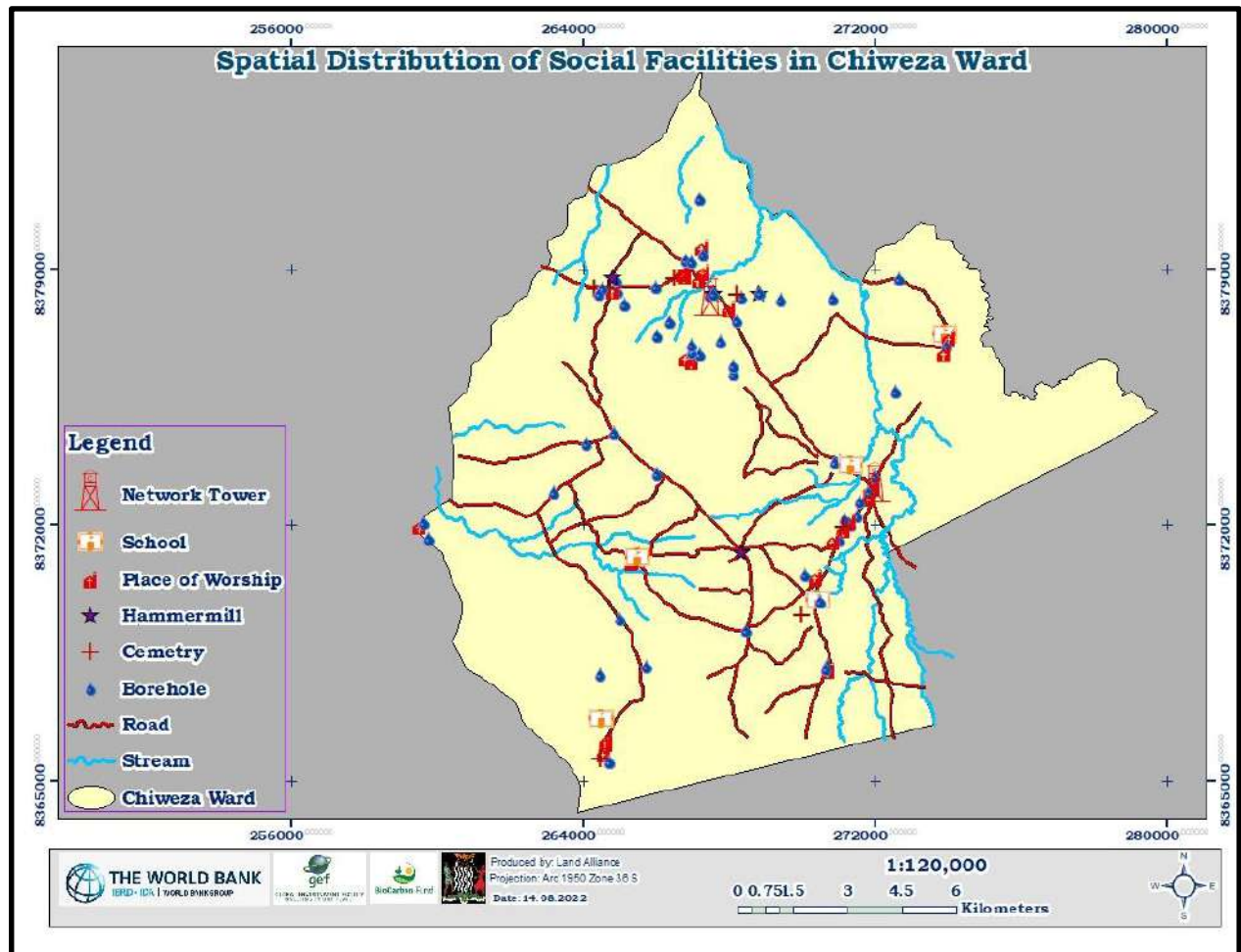


Figure 6: Spatial Distribution of Social Facilities in Chiweza Ward

3.4 Source of Livelihood

Livestock keeping and subsistence farming are the predominant livelihood activities in Chiweza Ward, with soya beans, maize, sweet potatoes, sun flower, tobacco, cotton and groundnuts being the main crops grown. Animals reared by the local residents of Chiweza Ward include cattle, pigs, goats, sheep, chickens, and ducks. The products are either sold to the Food Reserve Agency (FRA)

or in urban centres of Nyimba. The communities in Chiweza Ward also survive on non-wood products such as fruits, mopani worms (vinkubala), mushrooms and honey among others.

3.5 Livelihood Security

Livelihood security is the secure adequate access to resources as well as income generating activities to meet basic needs and it is shaped by the changing natural environment (Kassa, 2018). Securing the livelihoods of Chiweza Ward residents is closely associated with the limited development of economic opportunities in the area because most, if not all, residents depend on undiversified sources of livelihood based on rain-fed agriculture.

Livelihood security is often influenced by possibilities to diversify livelihood sources. If there are diversified livelihood sources, chances of attaining livelihood security are high. However, the over-dependence on agriculture as a livelihood source has contributed to soil degradation as the only option available is to open up new fields by cutting down trees, leading to deforestation, which has a negative effect on the climate. On the other hand, climate change affects rainfall patterns which further affect agricultural productivity thereby endangering the livelihoods of the local people of Chiweza Ward.

3.6 Livelihood and Natural Resource Utilisation

Sustainable Livelihood refers to a livelihood that can cope with and recover from stresses and shocks, maintain or enhance its capabilities and assets both now and in the future, while not undermining the natural resource base (Ayantoye et al, 2017). The over-dependence of Chiweza Ward residents on agriculture has led to increased pressure on the natural resources, especially land being the means of production for agricultural-based sources of livelihood. This unsustainable natural resource utilisation for survival, such as cutting down trees for field expansion leaves the lands bare, thereby resulting in soil degradation, which, in return, affects productivity.

On the other hand, farming practices adopted by the locals contribute to soil degradation, which forces them to abandon old fields and open up new ones with a view to increasing yields. Thus,

adopting conservation farming is encouraged so that one field can be used over and over without affecting the yields. This, in turn, will reduce the rate at which new agricultural fields are being opened up, thereby conserving trees.

Increase in population has equally contributed to unsustainable natural resource usage in that community members clear land for purposes of settlements and agriculture because their livelihood is entirely dependent upon farming. Thus, they either clear land for field expansions or to open up new fields.

Trees (forest) serve as natural habitats for various wild animals, birds and insects which get affected when their habitat is cleared. These animals, birds, and bees have the capability to serve as alternative livelihood sources through careful management. For example, the locals can venture into beekeeping as a business. However, the clearing of trees has led to the disappearance of biodiversity in the area.

3.7 Livelihood Constraints and opportunities

Agriculture and charcoal selling are the major livelihood activities in Chiweza Ward but due to changing climate the area has been experiencing late onset of rains, occasional dry spells and floods which have affected yields, thereby affecting the livelihood of people. However, there are opportunities of improving the yields through practising climate smart agriculture which ZIFLP, through the Ministry of Agriculture, has been implementing in the ward. Additionally, communities can be encouraged to form cooperatives or groups which various stakeholders can support to venture into environmentally-friendly value addition projects to process raw products and sell them as finished products. In order to minimise the livelihood constraints in the ward, sustainable investment in agro-industries to enhance value addition and the establishment of market infrastructures are of great importance. These can, in turn, improve food security and aid in poverty reduction through exploration of alternative sources of livelihood. The table below summarises the constraints and opportunities in Chiweza Ward:

Constraints	Opportunities
<ul style="list-style-type: none"> • Low agricultural yields due to poor farming practices • Lack of initial startup capital • Lack of alternative livelihood sources • Poor road network to access some villages • Lack of electricity 	<ul style="list-style-type: none"> • Switching to climate smart agriculture • Venturing into value-addition activities • Establishment of market infrastructure • Construction of feeder roads • Investment in green energy e.g. solar

Table 4: Livelihood Constraints and Opportunities

3.8 Biodiversity Hotspots

The sustainable use and protection of biodiversity is an integral component of successful Land Use Planning. There is a need to identify the existing biodiversity together with the local population. Any conflicts of interest must be brought out and resolved leading to greater social acceptance. LUP is one of the tools utilised in biodiversity protection as it helps in identifying existing biodiversity and also creates a broad consensus on the sustainable use of natural resources leading to the conservation of biodiversity. Chiweza Ward has various biodiversity hotspots and the following hotspots were identified during the PLUP preparation process:

3.8.1 Streams and Dams

Chiweza Ward has several seasonal streams, 3 year-round streams and no dams. These water bodies, which are biodiversity hotspots, can be protected by the enforcement of by-laws which restrict bad farming methods and also encourage adherence to the 50m buffer zone rule around water bodies as stipulated in the Environmental Management Act.

3.8.2 Forests

Part of **Musima Forest** (7,079 ha of the total 15,476 ha - about 45.7%) falls under Chiweza Ward, although it has been completely encroached into by the local residents. Chiweza Ward also has 4 hills and 1 woodlot. These hills, forest and woodlot are biodiversity hotspots which need protection and conservation. These hills, forest and woodlot are frequently affected by bushfires

either as a result of mouse hunting or clearing of fields. Restriction of burning of fields to months between August and October of every year as well as by-laws prohibiting bushfires and expansion of fields and settlements can help in protecting these hills, forest and woodlot in Chiweza Ward.

The map below shows the biodiversity hotspots in Chiweza Ward that were identified during the PLUP preparation process:

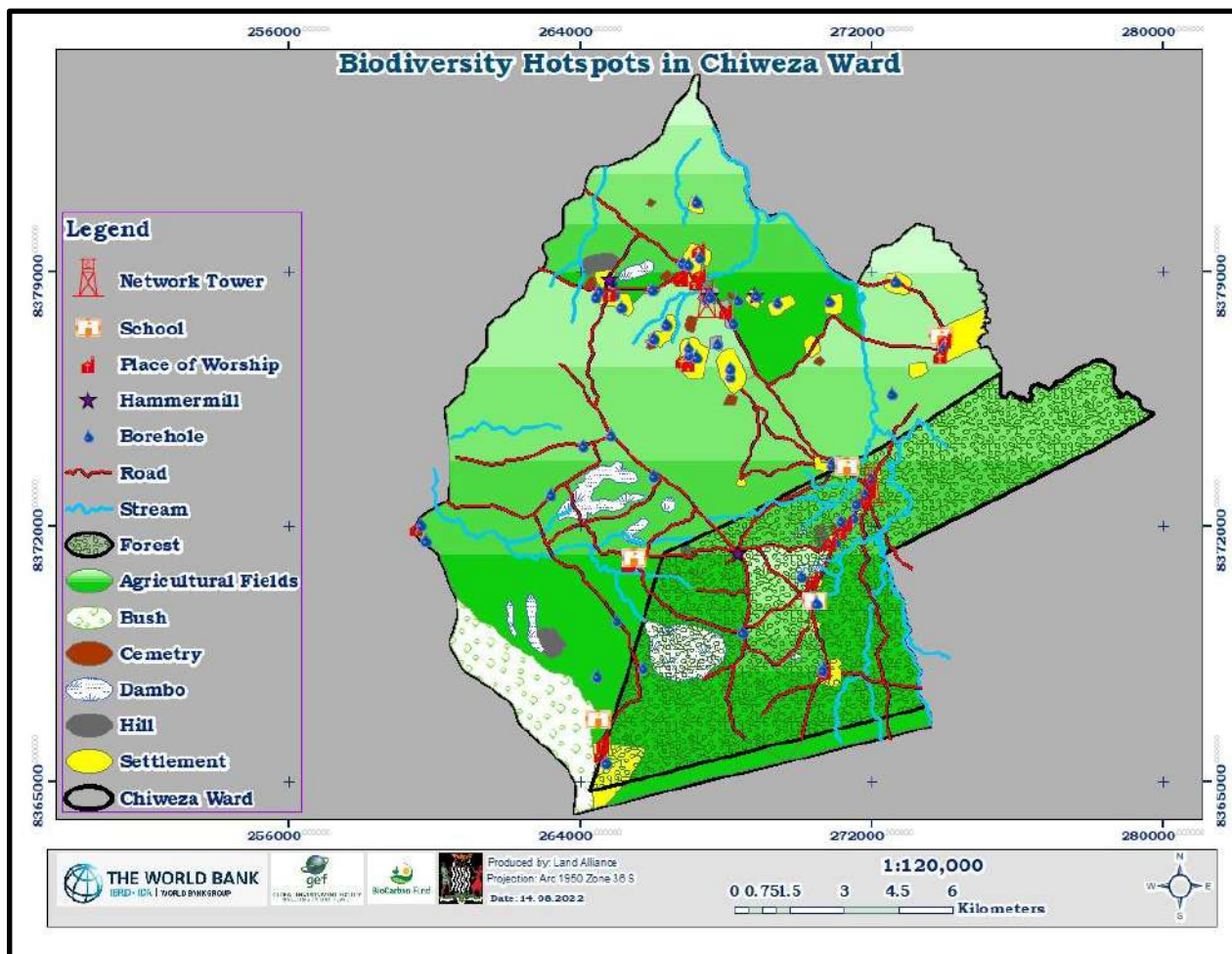


Figure 7: Biodiversity Hotspots

3.9 Ecosystem Function

Ecosystem function is the capacity of natural processes and components to provide goods and services that satisfy human needs, either directly or indirectly (de Groot et al 2002). Although unsustainable agricultural practices and charcoal production in Chiweza ward are the main

factors transforming the natural resource base (which in turn affects the biodiversity due to habitat loss), unplanned settlements and soil degradation have also led to disturbance of the ecosystem. Further, poor livestock grazing area management and encroachment into Musima Forest has continued to cause a decline in the ecosystem and it is hoped that this PLUP will be instrumental in influencing ecosystem restoration and aiding in the conservation of biodiversity.

4. CURRENT LAND USE PATTERNS

4.1 Overall Land Use

Chiweza Ward has hills, a forest and a woodlot, and the main land uses are as shown in table 5 below. As can be seen in the table below, agricultural land covers the biggest portion of the ward (87.33%), followed by forest (33.69%), settlements (5.20%), woodlots (3.76%), dambos (2.76%) and hills (0.55%).

However, it is worth noting that although 33.69% of Chiweza Ward is designated as forest land, this land has been completely encroached into by local residents opening up agricultural fields and creating settlements.

The table below shows the different land uses, the area sizes and the percentages of the whole ward:

No.	Land Use	Hectares	% Coverage	Comment
1.	Total Ward Area (ha)	21,015.3		This is the total area of Chiweza Ward.
2.	Agriculture	18,353.4	87.33%	This is land under cultivation. 6,829.3 ha (32.2%) of this mapped land falls under Musima Forest area.
3.	Forest	7,079.6	33.69%	All land mapped as forest. This land has been completely encroached into by local residents creating fields and settlements.

4.	Settlements	1,091.9	5.20 %	These include villages and other built up areas such as schools, health facilities, cemeteries, football fields, markets etc. 250 ha (22.9%) of this falls under Musima Forest area.
5.	Hills	115.9	0.55%	Hills not designated as forests but also not used for human settlements or agriculture. 31.2 ha (26.9%) of this also falls under Musima Forest.
6.	Bush (Woodlot)	790.3	3.76%	Land classified as community woodlots.
7.	Dambos	580.9	2.76	Dambo areas reserved for animal grazing

Table 5: Land Use Reservation

4.2 Land Use Suitability Analysis

This is an analysis that was done to identify the suitability of Chiweza Ward for agriculture as a land use. The analysis focused on agriculture as a whole and not necessarily evaluating the individual crops grown in the Ward and it was based on the soil types found in Chiweza.

4.2.1 Soil Type Agricultural Suitability Analysis

There are **4** Soil Zones covering Nyimba District, namely: **Vertisol-Luvisols**, **Acrisols**, **Luvisols** and **Lithosols**. The **Acrisol** Soil Zone is characterised by rich clay subsoil mostly associated with humid tropic climate and often supports forested areas. Acrisols are easy to till but are characterised by low fertility, low water holding capacity and more toxic amounts of aluminium, which make them unsuitable for agriculture (Peter Schad, 2006). The **Lithosols** Soil Zones are characterised by rocky sandy soils which are very shallow soils developed from various non-carbonated hard rocks and sandy soils which are well aerated but do not hold much water and they have poor nutrients, making them unfavourable for agricultural practices (Ersek, 2020). The **Luvisols** Soil Zones are characterised by red clays or red brown heavy loams which are difficult to till by hand, but rich in nutrients and have a good water holding capacity, hence favourable for farming activities. **Vertisol Soils** are clay-rich soils that shrink and swell depending on the moisture content. During the dry seasons, the soil shrinks, creating deep, wide cracks, and during the rainy season, the soils

swell due to the water content. **Vertisol-Luvisol** soils are a combination of the two soil types (Vertisol and Luvisol), hence their variability.

Chiweza Ward is covered by **Acrisols** and **Luvisols**. Thus, all agricultural activities in Chiweza Ward are done in these soils.

The map below shows agricultural land use suitability of Chiweza Ward based on the Soil types:

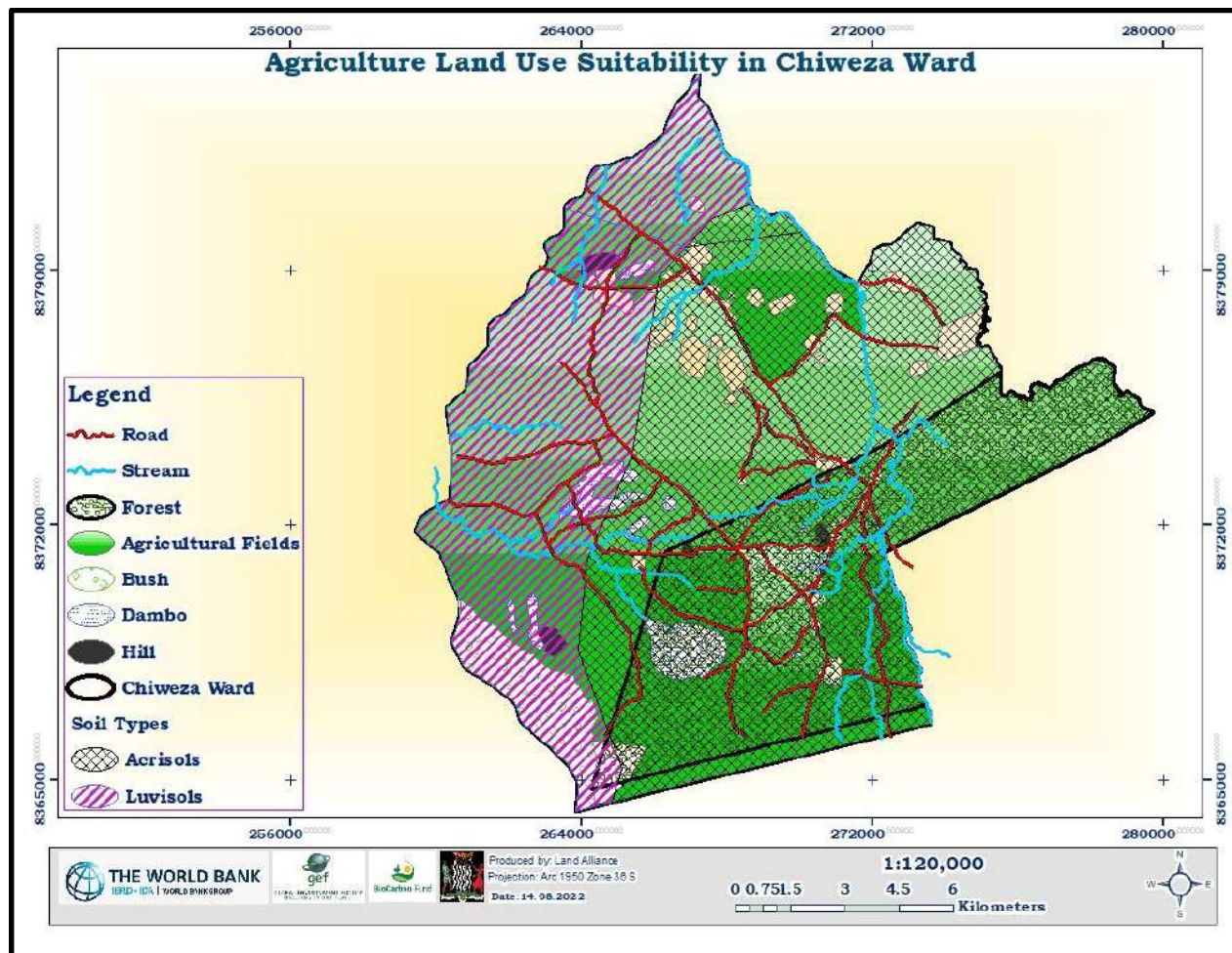


Figure 8: Chiweza Ward Agricultural Suitability Analysis Map

4.3 Land Resource and Administrative Boundaries

The land resources captured during the PLUP process are under Chiweza Ward and may spill over into other surrounding wards (such as Msimba, Lwezi, Mombe and Kaliwe). However, despite the overlapping of these shared resources between wards, local people in areas around Chiweza

acquire their services from Chiweza Ward. The map below shows the land resources in Chiweza Ward:

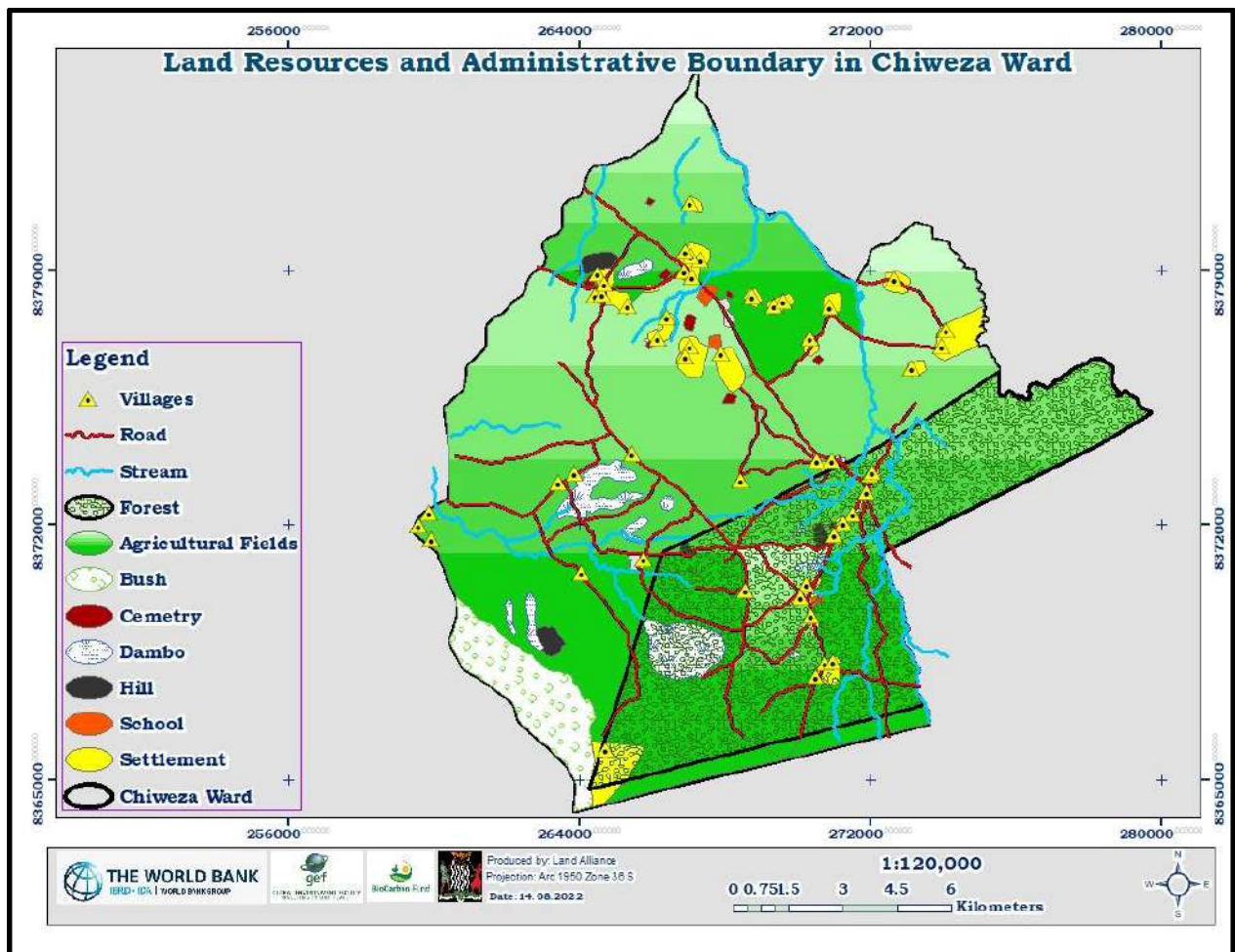


Figure 9: Land Resource and Administration Boundaries

4.4 Current Land Uses

In terms of land uses, Chiweza Ward is mainly covered with agricultural fields, a forest (Musima Forest, which has been completely encroached into by settlements and agricultural fields), settlements, dambos, a woodlot, hills and areas for social services such as schools, places of worship and other communal services like cemeteries, roads and streams. The map below shows the current land uses in Chiweza Ward:

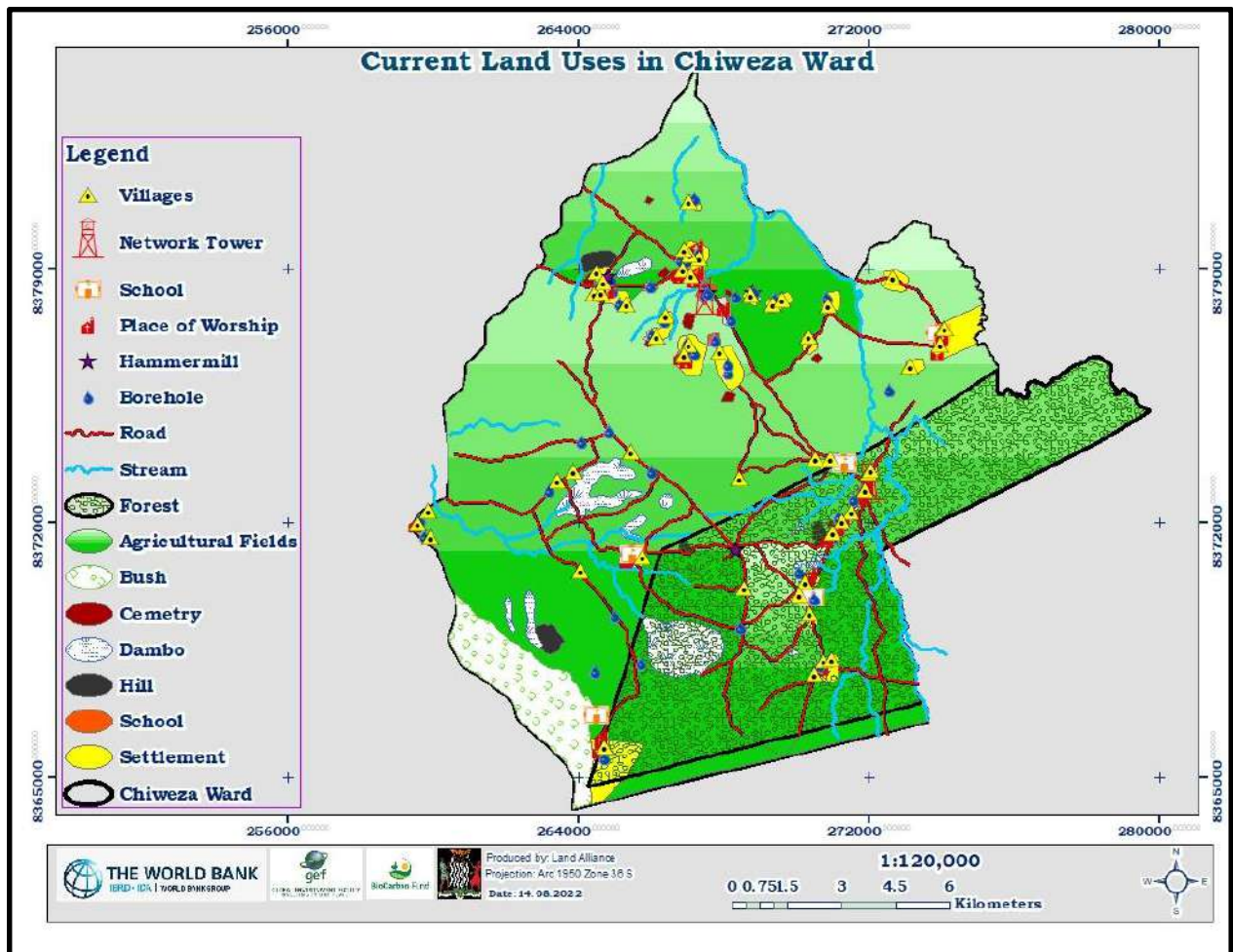


Figure 10: Current Land Uses

4.5 Land Use and Agriculture

Agriculture is a common land use in Chiweza Ward. Most of this land is under Climate Smart Agriculture supported by the Government. The map below shows areas of Chiweza that are used for agriculture:

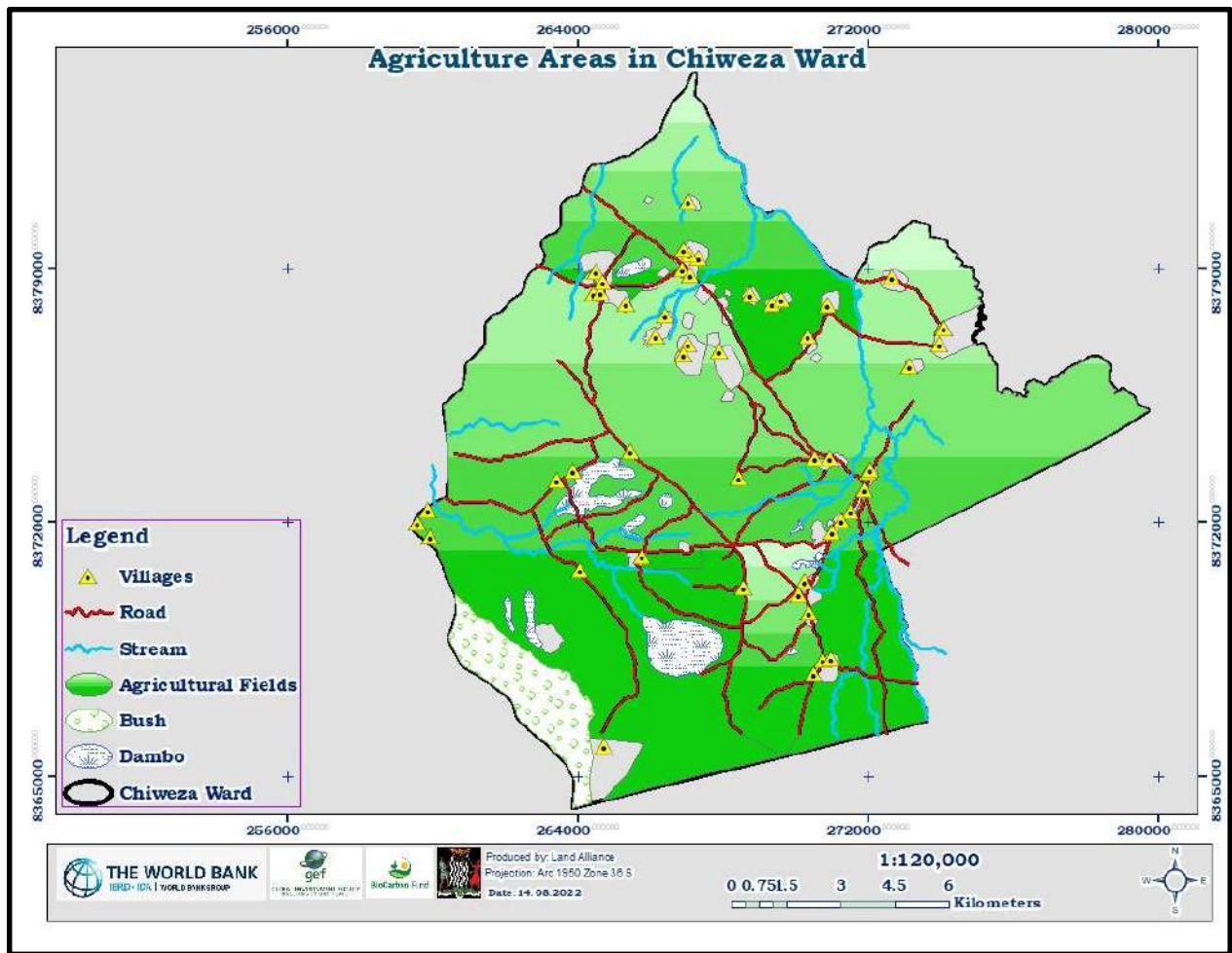


Figure 11: Land Use and Agriculture Map

4.6 Land Use and Forest

The purpose of protecting forests is to provide for conservation and development of forest with a view to securing supplies of timber and other forest produce, protection against floods, erosion and desiccation, withering and maintaining the flow of rivers. Apart from the existing forest area, which is a national forest which has been encroached into, communities have set aside a woodlot within the Ward for conservation. This woodlot is where they get firewood, mushrooms and vinkubala (mopani worms).

In as much as areas for conservation can be set aside by the community, there is need for awareness on the effects of indiscriminate cutting down of trees along the water bodies where there is riverine vegetation. This will mitigate erosion and siltation in order to enable the water

bodies in the area to restore and hold water for a long period even during the drier seasons. The trees in the river banks would also be conserved in order to prevent streams from drying up early and this would result in the rise of the water table. The map below shows the forest areas of Chiweza ward:

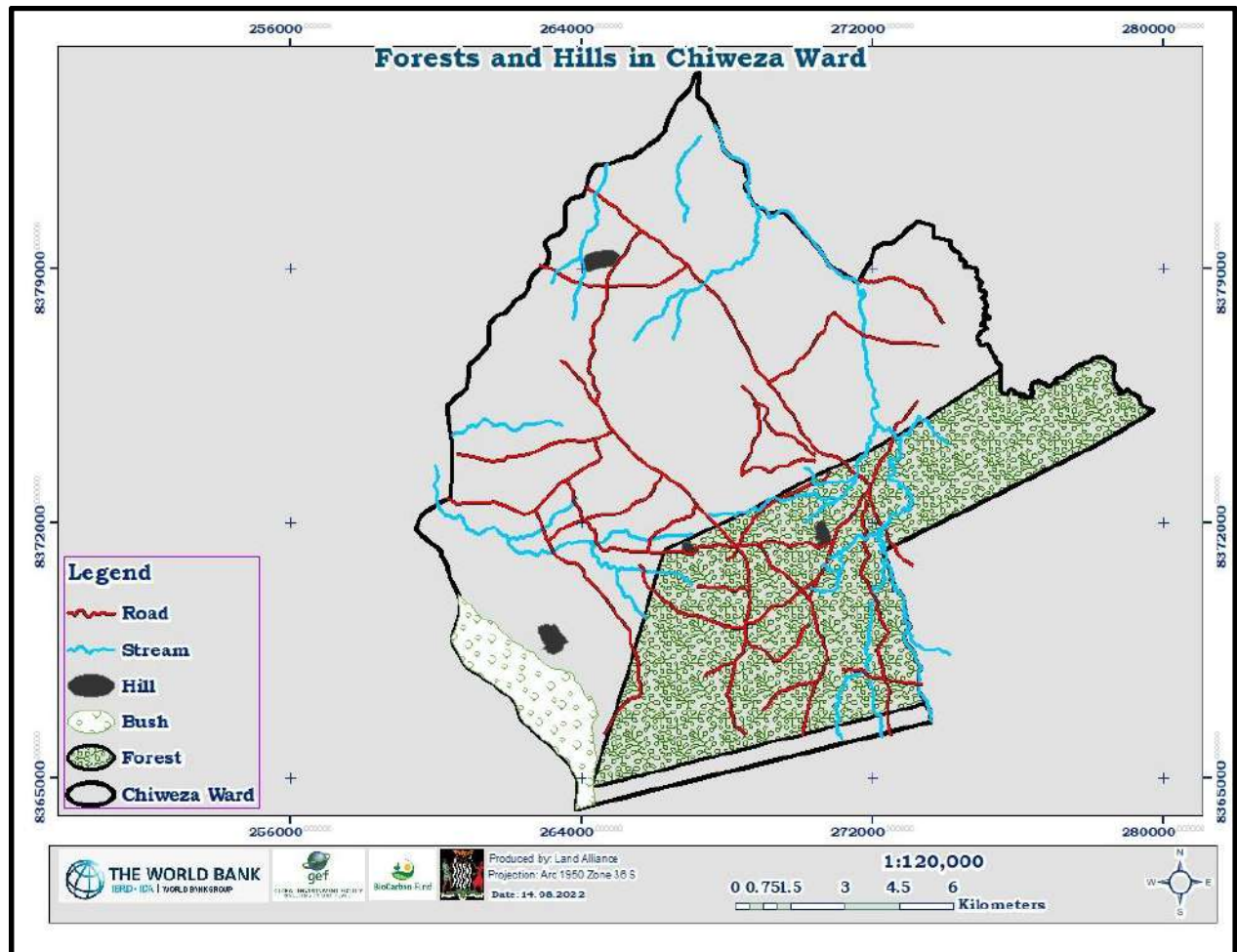


Figure 12: Land Use and Forest

4.7 Land Use and Wildlife

One of the objectives of PLUP in Chiweza Ward is to create an enabling environment for conservation and development of wildlife with a view to increasing economic activities leading to improved livelihood in the area. Historically, there were a lot of animal sightings and presences of wildlife in Chiweza Ward, which was attributed to an enabling vegetation cover, lower human

population, smaller agricultural fields and respect for nature by the local people through traditional authority.

Currently, large mammals are rarely sighted in the area. However, the commonly sighted small animals include rabbits and monkeys. During the community engagement activity, it was suggested that one way to restore wildlife in the area is by enhancing forest conservation, engaging in sustainable agricultural practices, enhancing conservation meetings on coexistence with wildlife, enhancing mitigation measures on human-wildlife conflict, and introducing exchange programs.

4.8 Land Use and Mining

Chiweza Ward has one legally established mine, namely: Muwambanyama Mine.

4.9 Land Use and Tourism

There are currently no tourist attraction sites or activities in Chiweza Ward.

4.10 Land Use and Physical Development

Chiweza Ward is characterised by various physical developments ranging from schools, churches, health facilities, police post, settlements, and markets. Changes in land use for creation of new settlements or expansion of existing ones is an area of concern in Chiweza Ward because land used for settlements usually becomes a permanent feature, never to revert to the original (environmentally friendly) land use. This has also been evidenced by the mushrooming of unplanned settlements within protected forest areas such as Musima Forest.

The Ward has **six (6)** schools – out of which **one (1)** is a secondary school namely: **Hofmeyr Secondary School** and the remaining **five (5)** are primary schools, namely: **Chiweza, Mombwe, Nyakaloko** and **Ghosite Primary Schools** and **Tumbatwa Community School**. There is **one (1)** health centre (**Hofmeyr Clinic**) in Chiweza Ward. The map below shows the physical developments of Chiweza Ward:

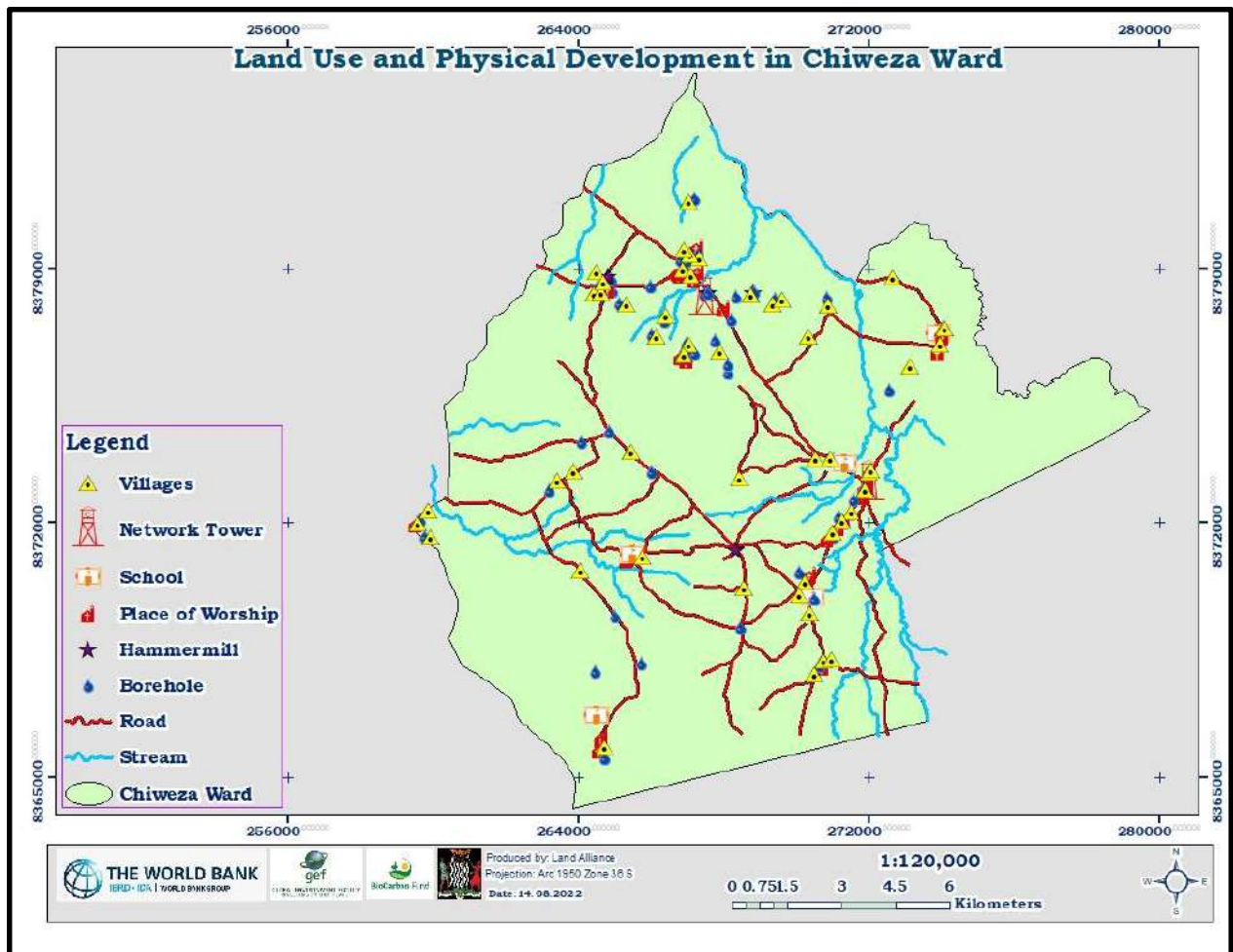


Figure 13: Land Use and Physical Development

5. COMMUNITY PARTICIPATION

5.1 Community Engagement Process

Before the commencement of community engagement meetings, the DMTs were oriented in Participatory Land Use Planning with a lens of **SBIA**. The PLUP training workshop was conducted for five days, facilitated by officers from the Physical Planning Unit, Provincial Administration and officers from Land Alliance, a Technical Service Provider engaged to facilitate Participatory Land Use Planning in Eastern province. DMT staff from Nyimba were trained in facilitation of PLUP. At the end of the training, the DMT was guided to prepare an action plan and budget to be used for facilitating PLUP activities in Nyimba District.

In the initial stages of PLUP activities in Chiweza, **Chief Nduke** was identified to be the custodian of land in Chiweza Ward. The team went to the Chief to explain and solicit support for implementation of PLUP in the Ward falling in his Chiefdom. He expressed happiness and promised to offer support during the whole process of PLUP. He provided responsible Indunas to work with.

Community engagement and participation is cardinal to the success of every community project, as it inculcates project ownership and sustainability. PLUP in Chiweza Ward was embarked on through a series of community engagement meetings which involved meetings with the Chief, Indunas, Headpersons and eventually the community at large in sharing the PLUP concept so that Free Prior Informed Consent (**FPIC**) could be adhered to.

Since Chiweza Ward has villages which are far stretched apart, community engagement meetings were held at five (5) designated villages. This was done to ensure that many members of each village community attended for the purpose of getting acquainted with the PLUP concept and getting first-hand information for better and uniform decision making processes in each respective community stretching across the whole Ward.

Community engagement meetings were held in three (3) phases as follows:

First Phase: Consisted of the first village meetings. During the first village meetings, community members were exposed to the concept of PLUP which involved community identification of shared resources, identification of problems affecting the management of resources, sketch mapping of these resources and other spatial features. Participants were guided in drawing sketch maps that depicted resources in their area. To enhance participation, participants were put in three separate groups of youths, women and men. This allowed peer-to-peer interaction among participants during the exercise. After drawing the sketch maps one representative from each group was asked to present the maps before the meeting.

The maps revealed a number of resources, natural and man-made, that were in Chiweza Ward. These resources included streams, dams, forests, hills, dambos, fields, schools, health facilities, roads etc. After the exercise, facilitators captured images of the maps and original copies were left with the communities. The pictures below demonstrate the steps during this phase:



Second Phase: Consisted of rapid village assessments where village coordinates were captured by the enumerators in the company of Indunas so that Shared Resource Maps can be digitised and produced. Below is a picture showing the product of this stage in the process:

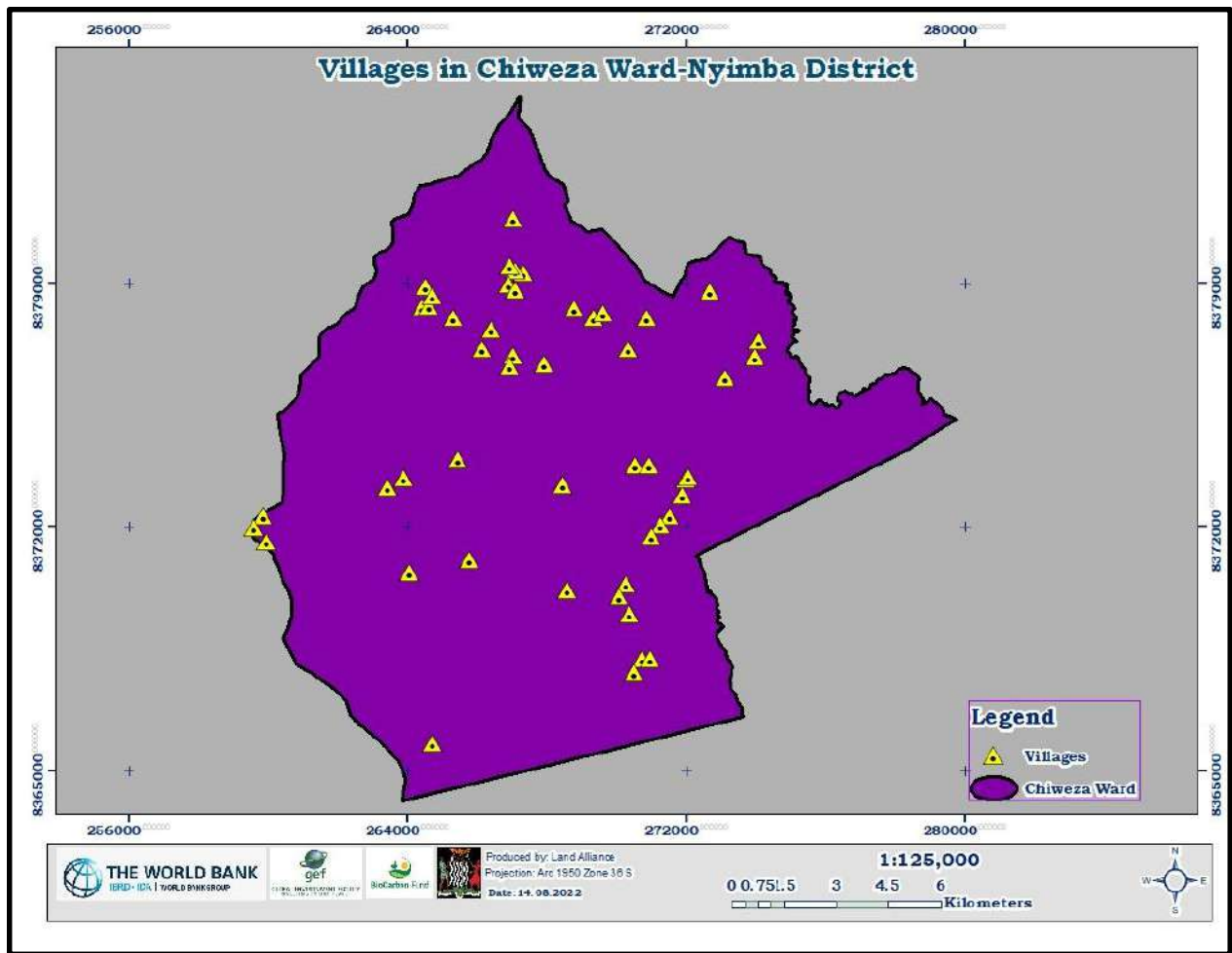


Figure 14: Village Rapid Assessment Exercise

Third Phase: In this phase community engagement meetings were also conducted for the verification of the digitised Shared Resource Maps in all the villages. This presented an opportunity for the community members to make objections, corrections and additions on the earlier submitted shared resource information. Community engagement meetings also involved zoning activities in all the village areas for future land uses. Members of the community were involved in the mapping of the proposed future land use areas. It was during the third phase of community engagement that Resource Governance Rules were also formulated for approval by HRH Chief Ndake. Below are pictures showing communities validating the mapped resources and proposing areas of conservation:



The attendance registers for each meeting have been attached in Annex 2.

5.2 Agreed Local Rules for Land Use and Resource Management

Prudent management of natural resources where the residents derive much of their livelihood in the rural communities is a daunting task in the absence of agreed local rules for land use and resource management. The formulated by-laws for Chiweza Ward aimed at facilitating the prudent use of local resources are attached as Annex 1.

5.3 Problem Identification

There are several challenges that rural communities face and Chiweza residents are no exception. The most prominent challenges are:

- Unsustainable agricultural practices.
- Lack of tenure security due to undocumented tenure rights.
- Marginalisation of the vulnerable groups such as women and youths.

Issues affecting land use in Chiweza Ward were captured during the clustered community meetings which were conducted. The problems, causes and suggested solutions to the problems faced by residents of Chiweza Ward are as outlined in the table below:

Problem	Causes	Possible Solutions
<ul style="list-style-type: none"> • Inadequate safe water sources • Drying of streams • Delayed rains • Loss of soil fertility • Reduced crop yield • Shortage of land for agriculture • Poor roads • Deforestation • Inadequate communication facilities • Inadequate Dams 	<ul style="list-style-type: none"> • Poverty • Ignorance • Seasonal streams and late onset of rains • Lack of alternative livelihood sources • Unsustainable agricultural practices • Land degradation • Lack of by-laws • Inadequate communication towers • Siltation 	<ul style="list-style-type: none"> • Drilling of boreholes and Dam construction • Adopting conservation farming practices • Adopting climate smart agriculture practices • Rehabilitation/construction of roads and related infrastructure • Skills in mushroom conservation and bee keeping • Construction of Dams • Installation of Communication Towers.

Table 6: Problems Identified

6. CORE ISSUES AFFECTING LAND USE AND THE ENVIRONMENT

At the five (5) clustered community meetings held at **Mpeta, Chiweza, Ghosite, Mombwe** and **Nyakaloko** community members across villages in Chiweza Ward identified various problems affecting them. During this session, participants were guided in how to prioritise the identified problems. This was done through pair-wise ranking, which involved participants comparing a particular problem against each of the other identified problems. This was done to help communities to identify and rank problems in order of importance and gravity so that core problems could be identified for intervention. This activity revealed the actual core problems to be addressed, as the others identified as problems were simply the results of the core problems. The main core problems identified at these meetings are listed in table 6 above.

The quest to increase crop production often leads to expansion of agricultural fields and consequently encroachment into forests.

The high levels of poverty in the Ward make communities heavily dependent on fuelwood and charcoal. The identified alternative sources of energy such as gas stoves and cook stoves are unaffordable and extensively unavailable.

Land tenure regarding forests and other communal/shared resources is often misunderstood because the communities claim that forests and trees in the wild in general do not belong to anyone. In addition, forest fires were identified as a key driver to deforestation and forest degradation. There is a general belief held among communities that bush fires, being a long-term part of their forest forest and land management system and historical part of their culture, does not significantly affect forests in a negative way.

Participants were further guided to identify the causes of such problems. This was done to make them realise that there was a human activity element related to the problems. Facilitators summed up the activity by explaining that some of the problems identified, especially those related to the environment, were as a result of lack of Land Use Planning.

6.1 Lack of Safe Water Sources

Residents of Chiweza Ward mainly depend on boreholes and water wells for water, although most of the boreholes are limited to areas around schools and health facilities. As a result, those living far from such facilities have challenges in accessing water, especially that most of the streams in the Ward are seasonal. During one of the community engagement meetings, they suggested that if beekeeping as an enterprise is to thrive in the ward, boreholes need to be sunk right into the forests because bees depend on water to survive. The current scenario is that water points are located further away from forests. The map below shows the distribution of water points in Chiweza:

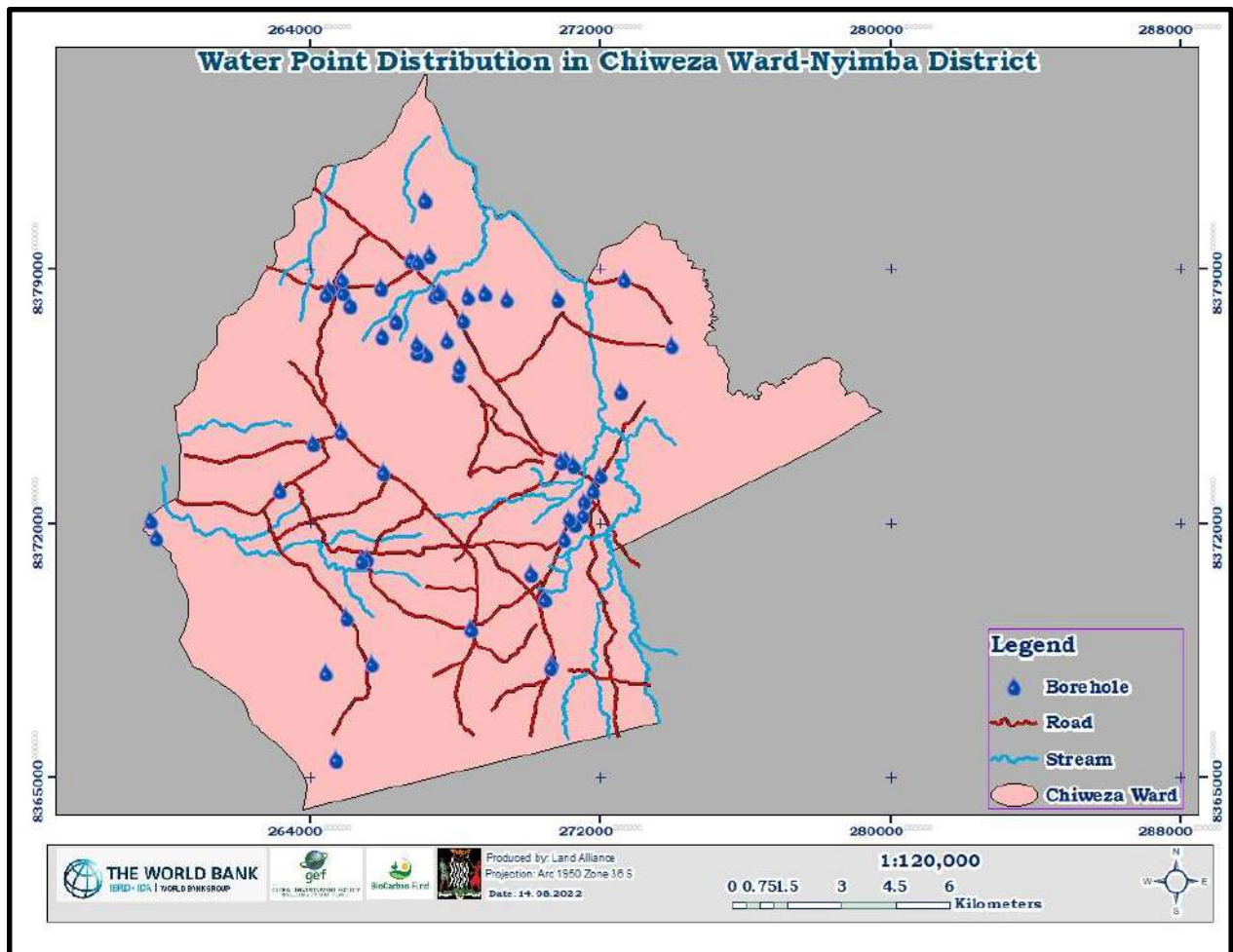


Figure 15: Distribution of Water Sources

6.2 Soil Degradation

This problem is mainly as a result of encroachment into forest areas and protected areas, unsustainable agricultural practices, bush fires and cutting down of trees for either charcoal production, field expansion or by animal grazing. This has, in turn, affected land productivity, leading to food insecurity and livelihood challenges. Thus, adoption of Climate Smart Agriculture and formulation of by-laws prohibiting unsustainable land resource use can help avert the problem of land degradation.

6.3 Poor State of Roads and Related Infrastructure

Inadequate transport system and lack of proper road network hampers development in Chiweza Ward because the movement of goods and services (required for such development) depends on transportation. The Ward also lacks other road-related infrastructure such as bridges/culverts, making certain areas inaccessible, especially during the rainy season. This makes access to essential services such as health facilities and schools very difficult for residents, especially those in far away places.

6.4 Long Distances to Schools

The entire Chiweza Ward has a total of **six (6)** schools, out of which one (1) is a secondary school and the remaining five (5) are primary schools. These schools enable children within the Ward to receive adequate primary education, but the presence of only one secondary school in the Ward means children need to cover long distances to access secondary school education in the ward.

With reference to the Ministry of Education standards of population of having access to school facilities within 5 kilometres distance, the analysis on Chiweza Ward shows that:

- **22** of the **50** villages in the Ward fall within the recommended 5km radius of the only Secondary School in Chiweza Ward (Hofmeyr Secondary School). The remaining **28** villages fall outside the recommended 5 km radius.
- **49** of the **50** villages in the ward fall within the recommended 5km radius of one or more of the 5 primary schools in Chiweza Ward. The remaining **1** village falls outside the recommended 5 km radius.

That being the case, secondary education levels are generally low in Chiweza Ward. This is mainly attributed to the lack of adequate secondary education facilities due to the Ward not having enough secondary schools. The figures below show the education facility service radius for primary and secondary education:

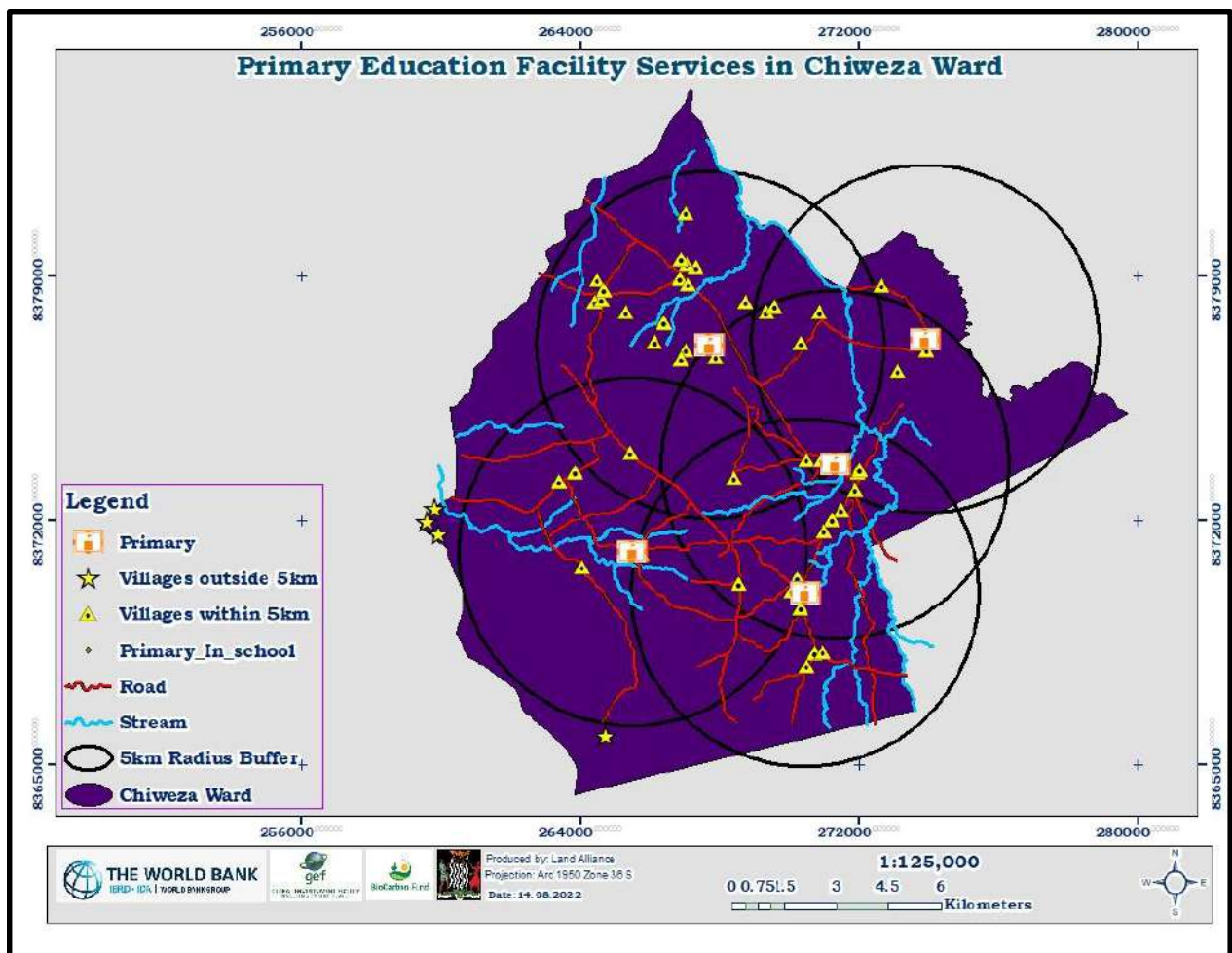


Figure 16: Primary Education Facility Service

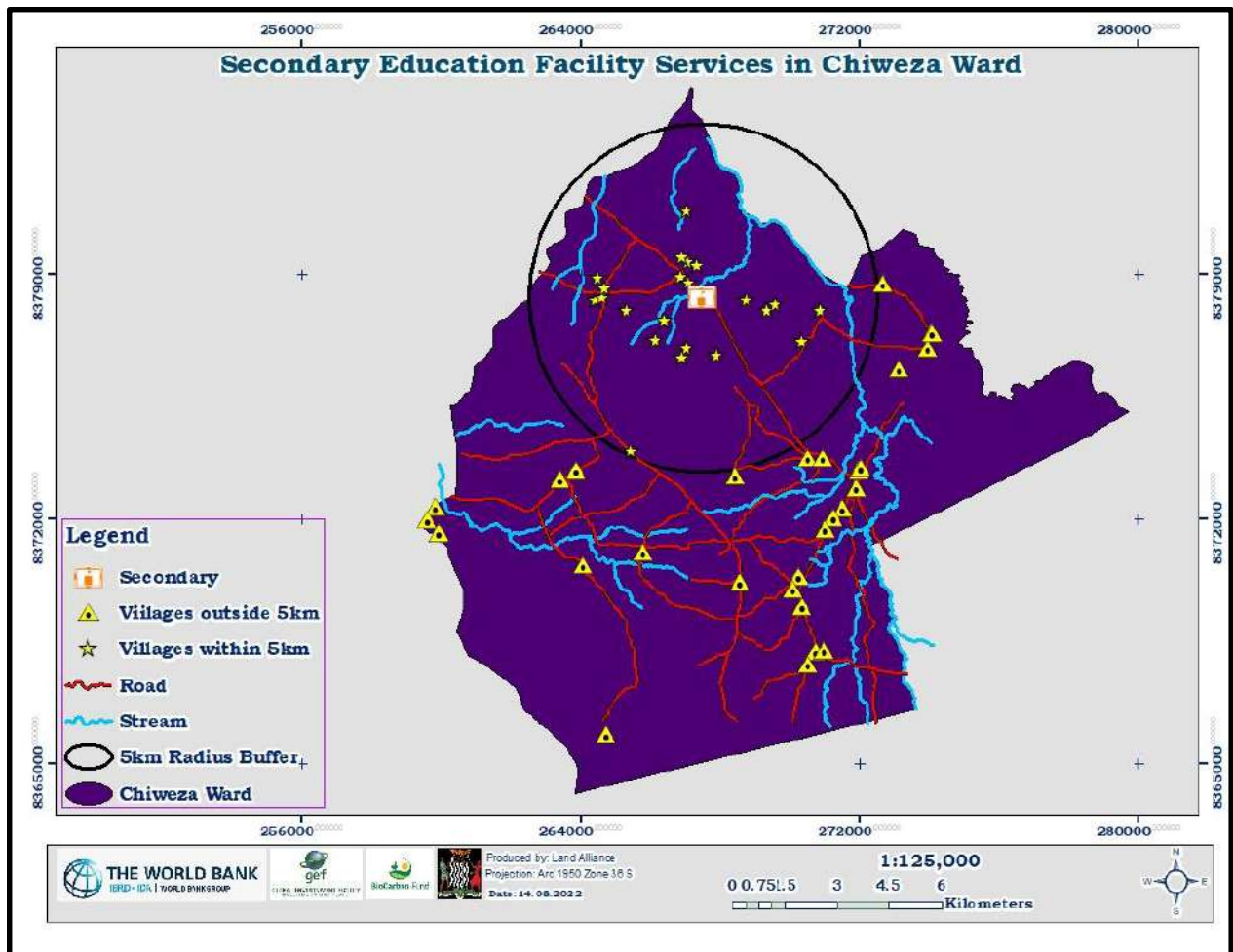


Figure 17: Secondary School Education Facility Gap

6.5 Inadequate Health Facilities

There is currently only one (1) health facility in Chiweza Ward servicing residents of Chiweza and other surrounding areas. Based on the standards of the population having access to health facilities within 5 kilometres distance, the analysis on Chiweza Ward shows that:

- **26** of the **50** villages within Chiweza Ward fall within the recommended 5km service radius of the one (1) health centre in the Ward. The remaining **24** villages fall outside this recommended distance.

Thus, it suffices to mention that any future plans by the community should take care of the demand for primary health care which will increase in Chiweza Ward and surrounding areas due

to people migrating from other parts of the district. The current health services will need to be expanded in order to improve the quality of health care. More health personnel will be required to ensure that the current high health worker to patient ratio is reduced. The map below shows the health facility service gap in Chiweza Ward:

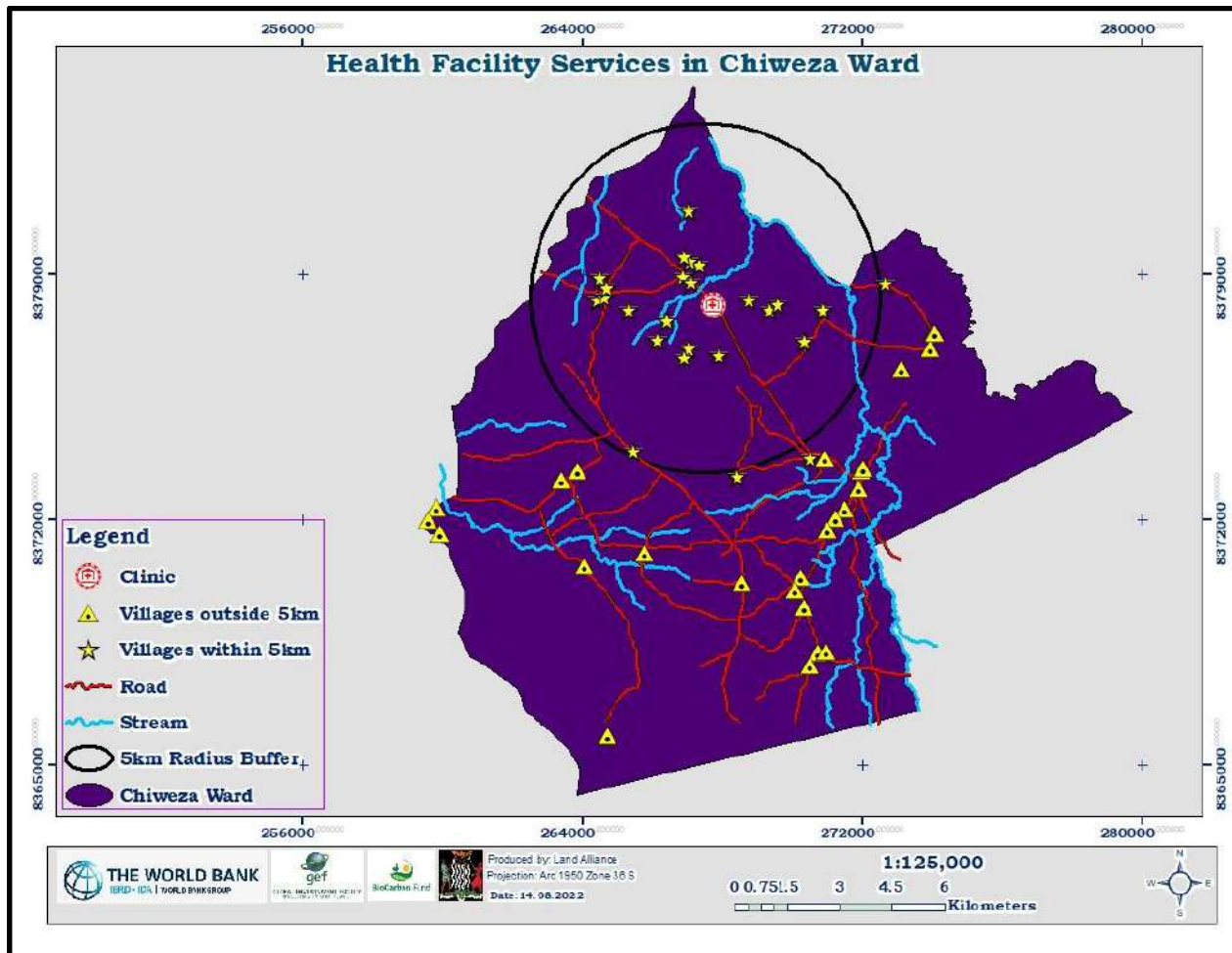


Figure 18: Health Facility Service Gap

6.6 Inadequate Telecommunications Facilities

Chiweza Ward is currently serviced with 2 telecommunication network towers. The data analysis in the area shows a deficiency of this service, because of intermittent network connection in certain villages within the ward. The telecommunication network tower installations facilitate the ease of access to diverse forms of information within the shortest possible time. Having more

telecommunication towers installed in the Ward would enable the residents of Chiweza Ward and surrounding areas to interact through phone-calls, messaging, internet etc. With the development of the 4G internet speed, citizens are able to surf the internet with less difficulty. Mobile money platforms have also made money transactions easier. In order to make this possible, several service providers ZAMTEL (Zambia Telecommunications Network), MTN (Mobile Telecommunications Network) and AIRTEL have established themselves in Nyimba district, through the installation of network towers which enable transmission of signals containing information from the sender to the recipient, and vice versa, and capturing of satellite signals.

The advent of the Covid-19 pandemic, which led to the closure of all learning institutions in the country in 2020 and 2021, forced most institutions to conduct lessons using e-learning platforms, especially for students and pupils in examination classes. Chiweza Ward was no exception to this, and the lack of telecommunication towers presented challenges in internet access for residents of the Ward and most pupils in Chiweza Ward were affected by this. This highlights the need for adequate telecommunication facilities to be installed within the ward.

7. LAND USE PLANNING – ZONING, VALIDATION AND GOVERNANCE RULES

This activity was meant for communities to object, correct and confirm that all the mapped resources were captured on the maps and propose areas to be protected. Communities agreed on the by-laws that will help them manage their resources and other areas of development in a sustainable manner. Five (5) clustered meetings were held in Chiweza ward at **Mpeta, Chiweza, Ghosite, Mombwe** and **Nyakaloko** villages. Printed shared resource maps on A1 were presented to the communities to confirm if the shared resources shown on the maps were a true reflection of their input. This was done in a consultative manner to make sure that the communities take responsibility for the process and the product, which is the PLUP. Community members selected the resources to be protected and zoned the areas and proposed other areas for developmental activities such as trading areas, clinics, schools and any other facilities that would support the improvement of their livelihood. Shared resources in the Ward overlap between sections/areas, especially that these sections/areas have imaginary boundaries. Thus, for the purpose of clearly presenting the proposed land uses, the meetings were clustered into five (5) areas with total attendance of **207** disaggregated as **130** male and **77** female as shown in table 7 below:

Community Area	Female	Male	Total No. of participants
Mpeta	8	18	26
Chiweza	6	14	20
Ghosite	14	18	32
Mombwe	37	67	104
Nyakaloko	12	13	25

Table 7: Attendance Statistics

7.1 Mpeta Community Meeting

The first validation meeting was held in Mpeta Zone with a representation of **9** villages, namely: **Daniel, Puto, Sitiye, Sowelani, Mpeta, Gezani, Ganizani, Kaphonongwe** and **Salatiel**. The total number of participants in this meeting was **26** (18 Male, 8 Female). The community proposed the construction of a pre-school and market at Dan village, a dam at Putu and Kamponombwe village together with the drilling of boreholes at Mpeta, Kaluzumba and Sowelani villages.

The rationale for the proposed developments was built on the problems that were identified during the first village meetings conducted in the area as a measure of mitigating the effects of climate change and improving their welfare by identifying alternative sources of livelihood. For example, if a dam can be constructed, it would provide an opportunity for smallholder farmers to venture into fish farming and irrigation farming. Meanwhile, the same dam would provide water to their animals, and in the long run, their dependence on charcoal production as a means of survival would reduce. The forest would provide an opportunity for beekeeping. The establishment of trading areas would attract investments, which would result in upgrading and servicing of roads. The table below shows the proposed areas and their respective land coverages:

S/N	Proposed Development	Area (Ha)
1.	Drilling of boreholes (Mpeta, Kaluzumba and Sowelani Villages)	-
2.	Construction of a Market (Dan Village)	0.25
3.	Construction of Bridges (Dan, Salati and Mose Villages)	-
4.	Plantation (Mpeta Village)	20.0
5.	Construction of a PreSchool (Dan Village)	0.5
6.	Construction of a dam (Putu and Kamponombwe Villages)	3.0

Table 8: Land Reservations for Mpeta Community Meeting

The map below shows the proposed developments and future land uses for villages that were represented during the meeting held at Mpeta Village:

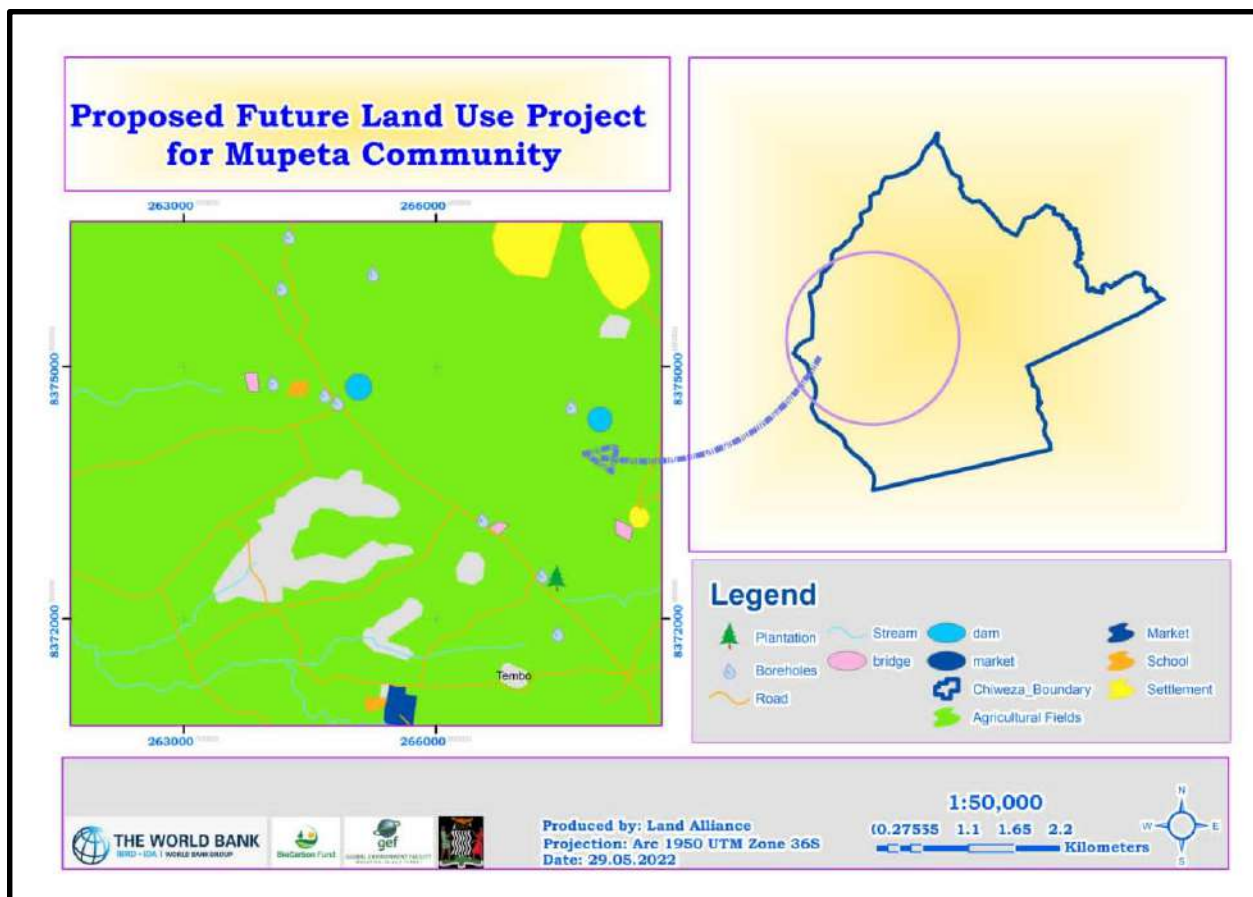


Figure 19: Future Land Use Map for Mpeta Community Meeting

7.2 Chiweza Community Meeting

The second validation and zoning meeting was held in **Chiweza Zone** with a representation of **7** villages, namely: **Nyanga, Adoni, Kiliki, Zileke, Yosefe, Nyambasimbe** and **Romanzi**. The total number of participants was **20** (14 Male, 6 Female). The community proposed the construction of a maternity annex at Holfmayre Rural Health Centre, ablutions blocks and police post at Holfmayre Secondary School, bridge at Chekelani village and drilling of boreholes at Nyangu, Holiapu, Davide, Zileke and Nyamasimbe villages and establishing community forests. Table 9 below shows the proposed areas and their area sizes and figure 20 is the map showing the proposed areas:

S/N	Proposed Development	Area (Ha)
1.	Construction of a maternity Annex (Holfmayre Rural Health Centre)	6.5
2.	Construction of Ablution Blocks (Holfmayre Secondary School)	-
3.	Drilling of boreholes (Nyangu, Holiapu, Davide, Holfmayre Secondary School and Chiweza Primary School)	-
4.	Community Forest (Kiliki, Romas, Davide, Zileke, Nyamansimbe and Yosefe Villages)	15.0
5.	Construction of a Police Post (Holfmayre Secondary School)	0.25
6.	Construction of a bridge (Chekelani Village)	0.25

Table 9: Land Reservation for Chiweza Community Meeting

The map below shows the proposed developments and future land uses for villages that were represented during the meeting held in Chiweza Zone:

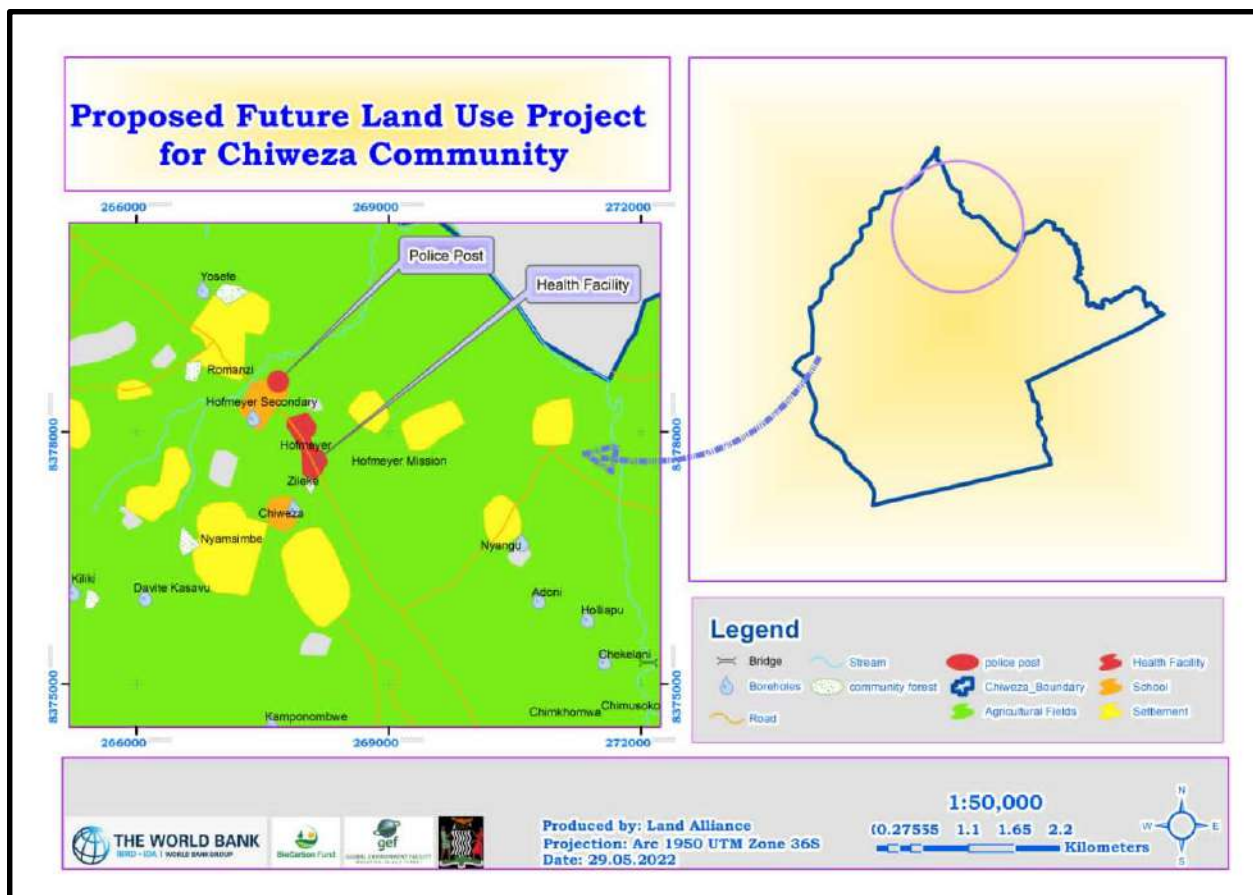


Figure 20: Future Land Use Map for Chiweza Community Meeting

7.3 Ghosite Community Meeting

The third validation and zoning meeting was held at **Ghosite Zone** with a representation of **6** villages, namely: **Ghosite, Abuwelo, Achilisa, Jevias, Sailota** and **Chimangeni**. The total number of participants was **32** (18 Male, 14 Female). Arising from the problems that the community identified during the first village meeting in the area which were: inadequate water points, no water for animals during the dry season due to early drying of streams, poor road network, no higher learning facilities and inadequate health facilities. The community proposed construction of a health post, teachers houses, market shelter, police post and tree planting. Table 10 below shows the proposed areas and their area sizes and figure 21 is the map showing the proposed areas:

S/N	Proposed Development	Area (Ha)
1.	Construction of a health post (Chimangeni Village)	0.25
2.	Rehabilitation of Road and Bridges (Mombwe – Ghosite Road)	12 kilometres
3.	Construction of Teachers Houses (Ghosite School)	0.5
4.	Construction of a Market Shelter (Abuwelo Village)	0.25
5.	Tree Plantation (Achilisa Village)	0.25
6.	Construction of a Police Post (Ghosite Village)	0.25

Table 10: Land Reservation for Ghosite Community Meeting

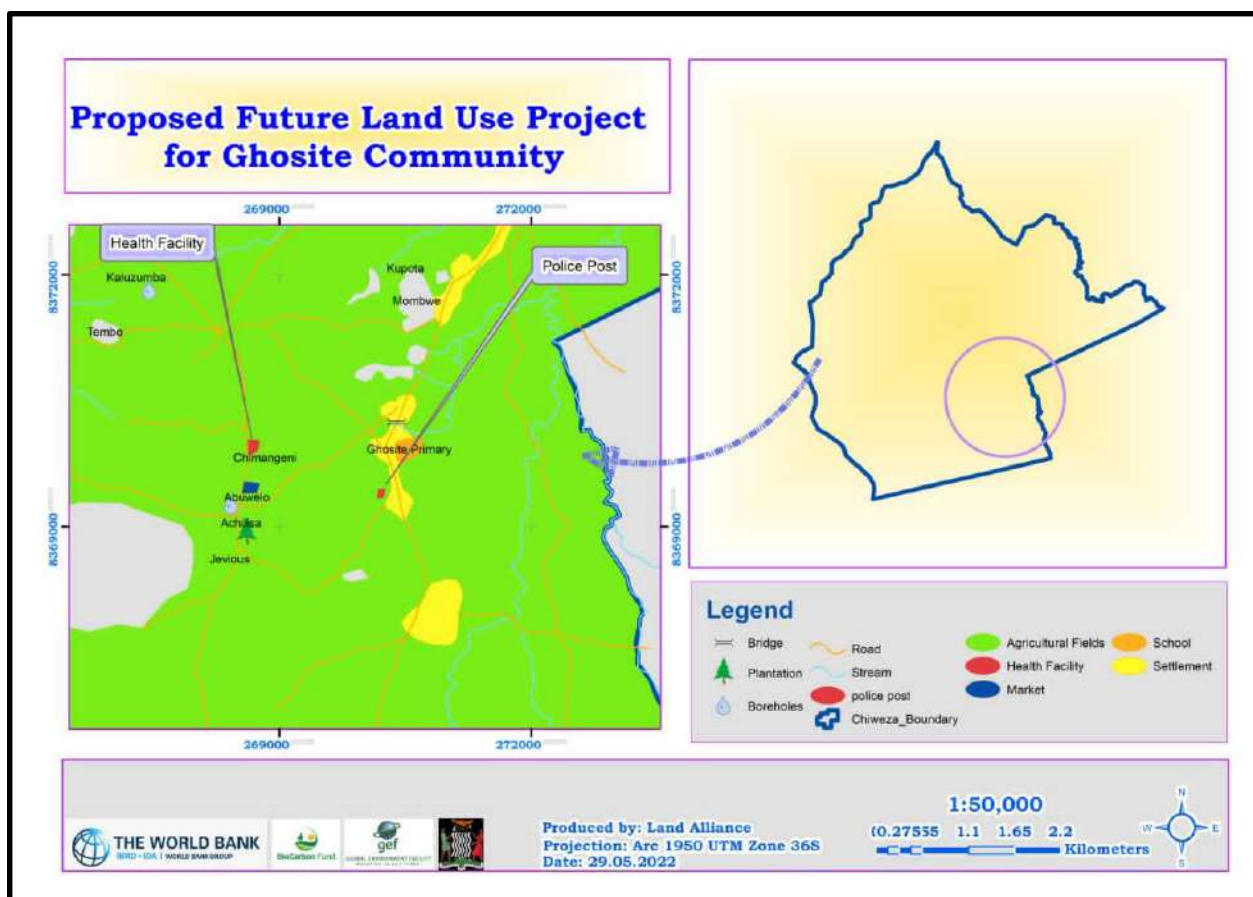


Figure 21: Future Land Use Map for Ghosite Community Meeting

7.4 Mombwe Community Meeting

The fourth validation and zoning meeting was held at **Mombwe Primary School** with a representation of **14** villages, namely: **Zibanibana, Thandi, Dani, Yotamu, Nyelele, White, Msaniyambe, Kupota, Chimsoko, Dina, Mtwale, Mbyoli, Chikomwe** and **Gideoni**. The total number of participants was **104** (67 Male, 37 Female). Arising from the problems that the community identified during the first village meeting in the area which were: inadequate water points, no water for animals during the dry season due to early drying of streams, poor road network, no higher learning facilities and inadequate health facilities. The community proposed drilling of boreholes, construction of class room blocks, clinics, bridges, tree planting and rehabilitation of roads. Table 11 below shows the proposed areas and their area sizes and figure 22 is the map showing the proposed areas:

S/N	Proposed Development	Area (Ha)
1.	Construction of Bridges and Rehabilitation of Road (Holfmayre – Ghosite Road, Chipendo Bridge, Chiweza, Fumba, Nyabimba, Sengezi Streams)	12 km
2.	Drilling of Boreholes (All Villages in Mombwe Zone)	-
3.	Construction of Classroom Blocks (Chengelani Village and Tumbatwa Community School)	4.0
4.	Tree Plantation (White Village)	0.25
5.	Construction of Clinic (Saniyambe Village)	3.6

Table 11: Land Reservation for Mombwe Community Meeting

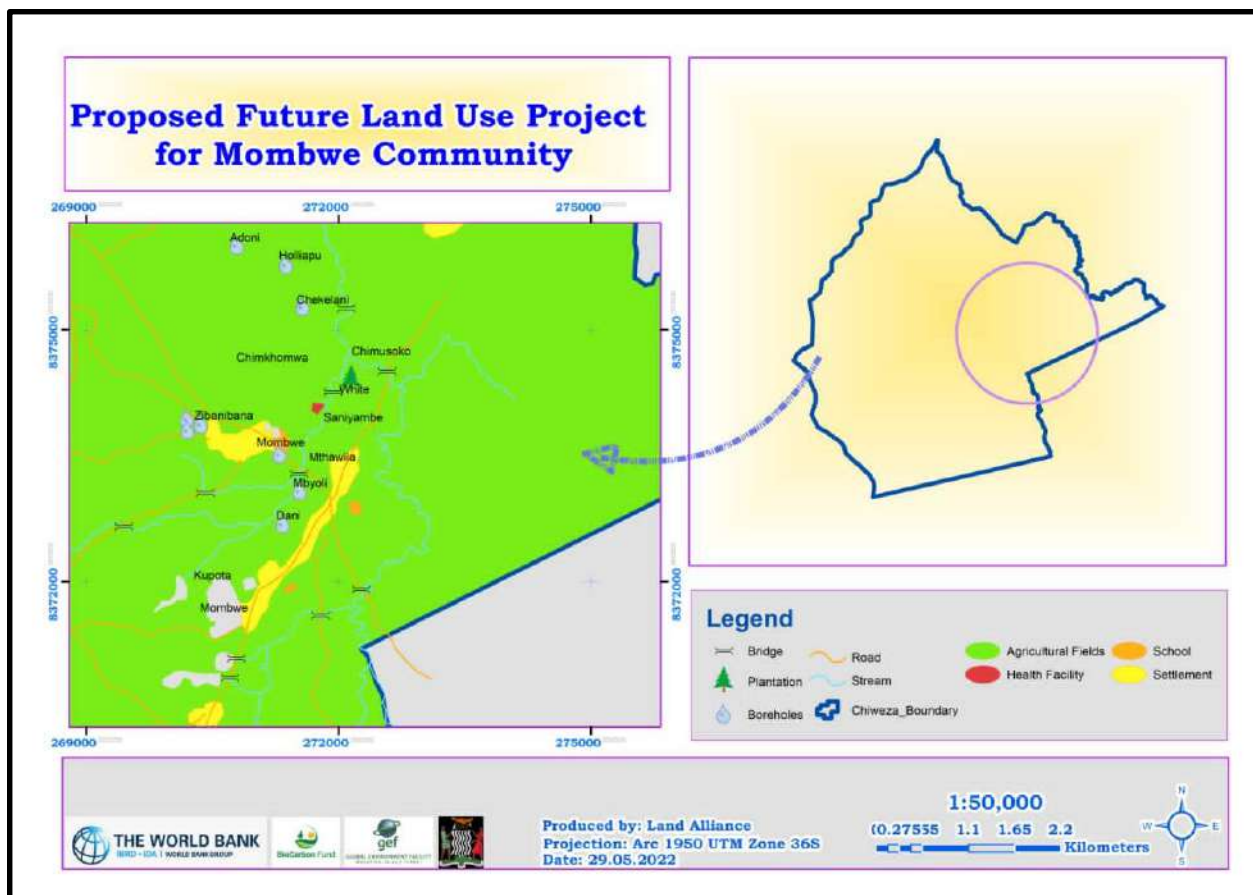


Figure 22: Future Land Use Map for Mombwe Community Meeting

7.5 Nyakaloko Community Meeting

The fifth validation and zoning meeting was held at **Nyakaloko Primary School** with a representation of **8** resettlement zones, namely: **Zone 1, Zone 2, Zone 3, Zone 4, Zone 5, Zone 7, Zone 8a** and **Zone 8b**. The total number of participants was **25** (13 Male, 12 Female). Arising from the problems that the community identified during the first village meeting in the area which were: inadequate water points, no water for animals during the dry season due to early drying of streams, poor road network, no higher learning facilities and inadequate health facilities. The community proposed drilling of boreholes, construction of a clinic, secondary school, a dam and installation of a network tower. Table 12 below shows the proposed areas and their area sizes and figure 23 is the map showing the proposed areas:

S/N	Proposed Development	Area (Ha)
1.	Construction of a Clinic	1.2
2.	Drilling of Boreholes	-
3.	Construction of Dam	-
4.	Construction of a Primary School	49.9
5.	Installation of a Network Tower	0.1

Table 12: Land Reservation for Nyakaloko Community Meeting

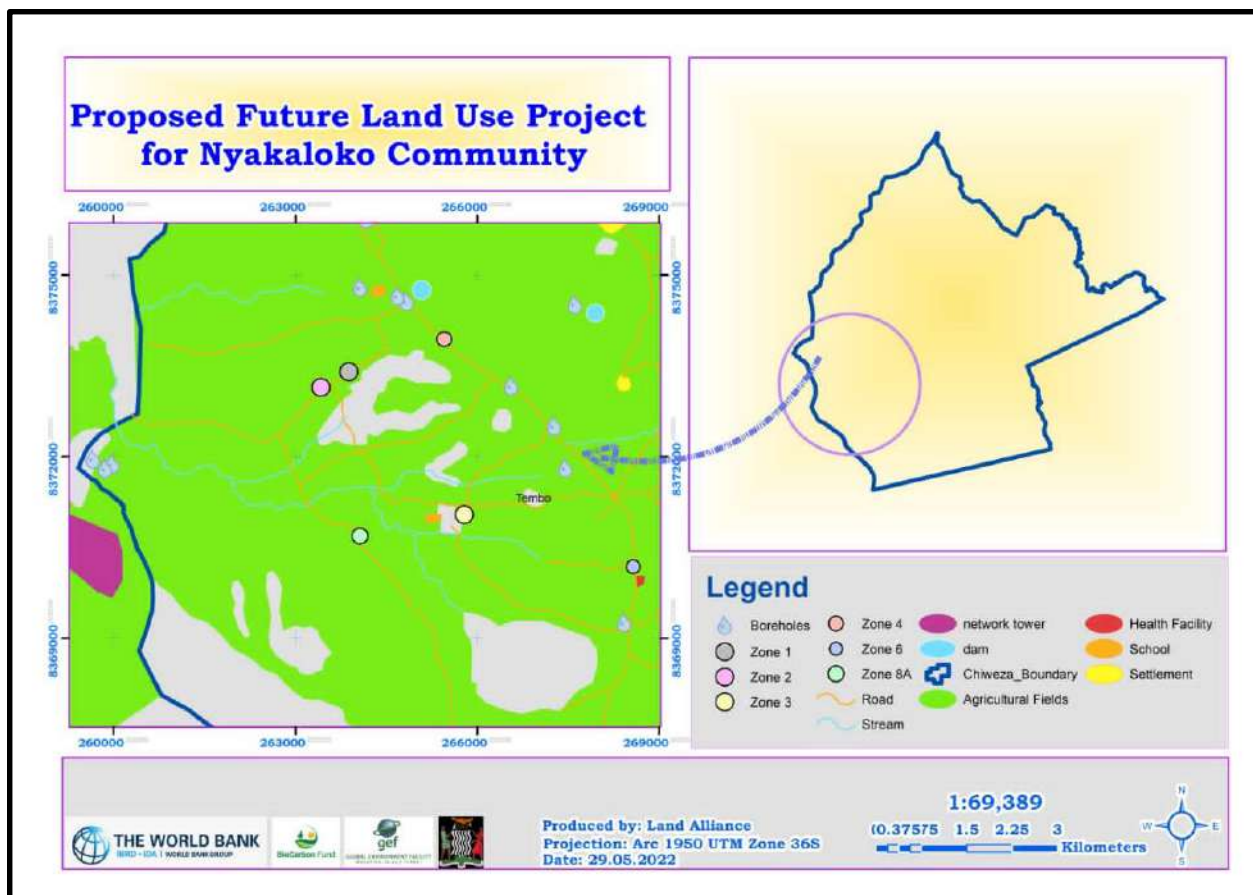


Figure 23: Future Land Use Map for Nyakaloko Community Meeting

8. FRAMEWORK OF THE PLUP AND ENVIRONMENTAL MANAGEMENT PLAN

The environmental assessment of Chiweza Ward highlighted the immediate development trends and environmental requirements of the area. Based on that, the PLUP Environmental Management Framework was compiled with the aim of guiding future developmental planning and decision-making processes. However, the potential environmental and social impacts of the PLUP activity are numerous, but mainly positive. Much of the negative impacts may be experienced during implementation of the identified sub-projects (based on the identified core issues within the ward) aiming to provide alternative livelihood sources and helping in mitigating unsustainable natural resource use and management. The specific impacts will be evaluated and distinguished during the preparation of the specific Environmental Management Plans (EMP) based on the identified sub-project investments. Therefore, this PLUP Environmental Management Plan was made with guidance originating from the current land uses and the proposed future land use analysis.

S/N	Aspect	Description	Impact	Mitigation Measure
1	Soil Erosion and Degradation	Due to increase in farming activities, forests are cleared for farming activities and high demand for land is also experienced.	Deforestation due to clearing of protected forests and Encroachment into protected forest.	Establishment of Community forests.
				Providing alternative off farm income generating activities.
				Formulate laws to protect the forest.
				Promote joint community forest management.
2	Habitat Destruction	Clearing of land for agricultural use around water bodies, which leads to drying of streams. Cutting of trees for charcoal production.	Clearing of land for agricultural use around water bodies, which leads to drying of streams. Cutting of trees for charcoal production.	Reduce land clearing to avoid unnecessary exposure of bare ground to the elements of the weather.
				Enhance community sensitization.

				<p>Restrict activities in sensitive habitats.</p> <hr/> <p>Avoid unnecessary exposure.</p> <hr/> <p>Restrict cutting down of trees.</p>
3	Loss of Fauna	Discharge of effluents by mining companies into streams resulting in water pollution.	<p>The effluents that is disposed in streams likely to pollute the streams that are a major source of water for the community members.</p> <p>Water pollution is eminent after the discharge of effluents into the streams which are the major sources of water.</p>	<p>Treating of effluents before been discharged into streams.</p> <hr/> <p>Drilling of boreholes away from mining areas for the community to use.</p> <hr/> <p>Mining companies should be compelled to have the EMP that will deal with the treating of effluents.</p> <hr/> <p>Minimise cutting down of trees</p> <hr/> <p>Forest conservation.</p> <hr/> <p>Restrict locations of dams.</p>
4	Air Pollution	Construction of roads likely to raise dust in the air and cause pollution.	Poor air quality that may cause respiratory diseases and other health complications.	<p>Revegetate bare areas by planting both exotic and drought resistant trees.</p> <hr/> <p>Minimise vehicle movements and speed.</p> <hr/> <p>Dust suppression during road construction.</p>
5	Resource Use Conflicts	Institutions that have acquired large tracks of land may prevent community members from benefiting from land that is privately owned by Institutions.	Land disputes	<p>Enforcement of by-laws to prevent conflicts.</p> <hr/> <p>There is need for by laws that guide customary land governance.</p>

Local authorities and other relevant authorities to ensure that community members are engaged in decision making regarding their resources.

6	Loss of Land	Displacement of communities or households and reduced grazing land which can cause conflict	There may be loss of farm and grazing land among others by the local communities owning land to investments projects and forest conservation.	Communities must identify project areas in consultation with their leaders.
				Communities must be involved in decision making regarding natural resources in their ward.

Table 13: Environmental Management Plan

9. IMPLEMENTATION STRATEGY

The table below outlines the PLUP Implementation Strategy

Problem	Objectives	Strategy	Output	Indicator
Shortage of Water for Human Consumption, Animals and Irrigation	To improve access to water supply for animals and for irrigation purposes	Dam Construction at identified sites	At least 2 dams constructed at Mpeta Zone and Nyakaloko Zone	Number of dams constructed
		Borehole Drilling at identified sites	At least 30 boreholes drilled in the identified sites	Number of boreholes drilled
Inadequate Trading Areas	To promote investment and access to goods and services	Construction of markets at identified sites	At least two (2) markets constructed in Daniel Village and Abuwelo Village	Number of markets constructed
Inadequate Telecommunication Towers	To create connectivity between the rural and urban communities for easy dissemination of information such as COVID prevention and other pandemics	Installation of communication towers by Telecommunication Companies	At least each Telecommunication Company should put up a tower (Zamtel, MTN and Airtel)	Number of communication towers installed
Soil Degradation	To Promote Environmental Protection and Conservation of Natural Resources	Tree planting exercise and promote natural vegetation growth	Plant at least 10,000 trees	Number of trees planted

		Community Forest establishment in identified areas	Establish at least 3 Community Forests in Chiweza Zone, White Village and Achilisa Village	Number of Community Forests established
Poor Agricultural Practices	To promote agricultural productivity.	Adoption of Climate smart Agriculture	At least 75% of local farmers adopt the CSA technique	Percentage adoption of CSA
		Deployment of extension workers	At least 1 extension worker deployed	Number of extension workers deployed
Poor State of Roads and Related Infrastructure	To promote spatial growth and improve transport system	Rehabilitation of roads	Rehabilitate all roads	Number and length (km) of roads rehabilitated
		Construction of culverts and bridges	Construct culverts and bridges across all streams	Number of culverts and bridges constructed
Inadequate Health Facilities	To increase the number of health facilities	Construction of health facilities in proposed areas	Construction of at least 2 health facilities in Nyakaloko Zone and Saniyambe Village	Number of health facilities constructed
		Construction of health staff houses	At least 6 staff houses for the proposed health facilities (3 per health facility)	Number of staff houses constructed

Long Distances to Schools	To attain a high quality education standard by increasing the number of schools and reducing the teacher to pupil ratio in all schools within the ward	Construction of new classroom blocks	Construct at least 14 classroom blocks in the ward (1 per primary school (5), 1 for the secondary school, 7 for the proposed primary school and 1 for the proposed pre-school)	Number of classroom blocks constructed
		Construction of primary schools in identified areas	Construct at least 1 primary school in Nyakaloko Zone	Number of secondary schools constructed
		Construction of pre-school	Construct at least 1 Pre-School in Daniel Village	Number of pre-schools constructed
		Construction of teachers/staff houses	At least 25 teachers/staff houses for the proposed and existing schools	Number of teachers/staff houses constructed
Lack of Alternative Livelihood Sources	To enhance human development through skills training and empowerment programs	Establishment of a skills training centre	At least 1 skills centre established	Number of skills centres established
		Train farmers in fish farming, beekeeping and mushroom conservation techniques	Train as many people as possible	Number of people trained
		Establishment of value addition plants	At least 2 value addition plants established in the ward	Number of value addition plants established
Lack of Police Posts		Construction of Police Post at identified site	At least 1 Police Post constructed in Ghosite Zone	Number of Police Posts Constructed

Table 14: PLUP Implementation Plan

9.1 Capital Investment Projects

Priority Projects	Quantity	Unit Cost (K)	Total Cost (K)
Dam Construction	2	TBA	TBA
Construction of Martenty Annex	1	600,000	600,000
Drilling of Boreholes	16	80,000	1,280,000
Construction of Primary School	1	1,500,000	1,500,000
Construction of preschool	1	400,000	400,000
Construction of classroom blocks	1	350, 000	350,000
Construction of Bridges	9	700,000	6,300,000
Construction of ablution blocks for Hofmeyr School	2	500,000	1,000,000
Construction of teacher staff houses	10	300,000	3,000,000
Construction of Clinics	3	800,000	2,400,000
Construction of Police Post	1	850,000	850,000
Construction of Market	2	200,000	200,000
Rehabilitation of roads	all	TBA	TBA
Installation of Telecommunication Towers	1	TBA	TBA

Table 15: Identified Capital Projects

10. INSTITUTIONAL ARRANGEMENT FOR PLAN IMPLEMENTATION

The Local Authorities will play a critical role in supporting the implementation of PLUP in line with the guidelines and provisions of the URP Act No.3 of 2015. The Forestry Department, Department of National Parks and Wildlife and Ministry of Agriculture will be the main implementers of the PLUP while the Ministry of Health, Ministry of Education and other line ministries will be monitoring adherence to the zoning of the land use plan with regards to schools, health facilities and other developmental and social land reserves.

Chiweza Ward PLUP is envisaged to be implemented in line with the Nyimba IDP which is running for a period of 10-years from 2021-2030. Being a local plan, the Traditional Authority will work hand in hand with the DMT team in the implementation process since the plan is part of the Integrated Development Planning framework. The plan also provides an opportunity for the traditional leaders to lobby for support from the government through local authorities e.g. from the Constituency Development Funds (CDF).

At chiefdom level, the traditional authority with guidance from the DMT team will choose community representatives who will be overseeing and executing PLUP activities and will intermittently rehearse with both the DMT and the Chiefs on the implementation process.

The mandate to carry out minor (pilot) measures may in some cases need to be transferred to the civil society (i.e. self-help groups, cooperatives, farmers' organisations or local NGOs). It is also possible that private sector companies or individual consultants take over this part so that the Government, through DMT, only concentrates on the supervision and monitoring of the process.

11. CONCLUSION

The PLUP for Chiweza Ward was developed through a consultative and participatory process, and technically analysed by the Land Alliance Consortium - the TSP hired by ZIFL Project - in consultation with the Nyimba DMT team. Additionally, the PLUP analysed the current situation in Chiweza Ward and issues pertaining to Land Use Planning were identified, with a lack of alternative sources of livelihood being one of the key drivers of unsustainable natural resources management. At the same time there has been haphazard and unsustainable use of land and other natural resources by residents of Chiweza Ward and those residing in surrounding areas largely due to lack of documented rules and regulations governing the use of resources. Therefore, it is hoped that this PLUP will be used for the purpose for which it was developed.

12. GLOSSARY

12.1 Natural Resources

One of the essential and prerequisite activities when embarking on participatory land use planning is understanding the quality and quantity of the land resources. Besides, participatory land use planning forms a basis for obtaining optimum level of production and also helps in introducing appropriate land management practices for better and/or improved livelihoods (Schwedes and Werne, 2010). Therefore, natural resources must be understood as conditions and elements of the land that can be exploited, developed or managed without causing negative impacts that risk the fragile environmental relationships (Negash. 2012). The following are some of the natural resources:

12.1.1 Vegetation

In the context of PLUP, vegetation refers to all plant species that are unsustainably managed and used by communities for any of their land uses. The vegetation is used to mainly fulfil community needs such as gathering firewood, fruits, medicine, poles and also serves as habitats for wild animals. On the other hand, vegetation provides cover for the soil, allows the rainwater to percolate into the ground, and protects the soil from erosion.

12.1.2 Soils

This is one of the key elements across the globe that determines what land can be used for, taking into consideration the physical and chemical properties (FAO, 2006). The soils exert influence in determining the feasibility of land uses and composition of natural communities such as plants, animals, etc of an area. Thus, land use planning may demand a study on physical and chemical conditions, composition, and overall characteristics of soils (GIZ, 2012; Negash, 2012). This is due to the fact that knowing the soil characteristics helps in understanding the past and present land uses and helps in predicting future land use potentials.

12.1.3 Water

This is an essential resource which is required for use by human beings and wildlife. It is also used for irrigation and navigation by people and by plants to perpetuate, grow and produce

(Mitchell et al, 2004). Besides, the quantity of available water determines the type of land use options and land utilisation types. Thus, the availability and accessibility of water resources in an area determine sustainability and the types of land uses that can be implemented (GIZ, 2012).

12.2 Climate

Climate is one of the factors that affects land use as it is the major agent that determines water balance and dictates the nature and type of natural vegetation in a specific area (Malcolm et al, 2006). Interactions among climate, relief and soils are important in determining socially acceptable, economically viable and environmentally sound land use types (FAO, 1993). The main climatic elements which directly govern land use types to be considered for a certain area are the rainfall amount and distribution and the air temperature level (Negash. 2012). Thus, data on these elements is so important for sustainable local level land use planning processes. The following climatic elements are important factors in determining the land use options of a certain locality or planning area.

12.2.1 Rainfall

The term precipitation includes rainfall, snow and dew. The availability of water through precipitation or rather the lack of it is often the most limiting physical factor in crop and livestock production in areas where water is scarce for irrigation. It's of great importance to know the rainfall patterns of a given area when undertaking any level of land use planning. Besides, the seasonal distribution of rains governs the choice of major land uses, crops and the optimal planting time, harvesting and other farming operations such as land preparation, weeding and threshing (Negash. 2012).

12.3 Land Use Planning

According to Liversage and Mangiafico (2014), land-use planning is the systematic assessment of land and water potential, alternatives for land use and economic and social conditions in order to select and adopt the best land-use options. It's a process of decision making on the use of the resources of a certain unit of land for options of more productivity, environmentally sound and sustainable economic uses (JICA, 2011). However, Negash (2012) argued that decisions on land

use options are based on the analysis of potentials and constraints of the land resources as guided by the competing needs of the communities.

12.4 Participatory Land Use Planning

This is an interactive process in which local communities could discuss and determine how to manage the land and other natural resources in their locality (JICA, 2011). It is based on dialogue among all stakeholders with an aim of making sustainable land use decisions through negotiation (GIZ, 2012). The intention is to form comprehensive land use options based on the quality and quantity of the resources and the needs of the community (PLUP Manual, 2019). The land use plan aims at improving the livelihoods of the existing community and meeting the resource development and administration needs of the future generation (Negash. 2012).

12.5 Livelihood

This can be defined as means and ways of making a living. It encompasses people's capabilities, assets, income and activities required to secure the necessities of life (Mutea et al, 2019). According to Kassa (2018) livelihood is said to be sustainable if it enables people to cope with and recover from shocks and stresses (such as natural disasters and economic or social upheavals) and enhance their well-being and that of future generations without undermining the natural environment or resource base.

Presently, natural resources are overexploited, exceeding the rate at which they are replenished due to the increase in the demands because of high population increase and unsustainable usage (Abu and Soom, 2016). Hence, land use planning is the tool that can well be utilised in order to improve and maximise the usage and management of resources in order to better improve the livelihoods of people. This is because LUP bases its processes on the quantity and quality of resources available that can improve livelihoods and the environment (GIZ, 2012). Thus, decisions are made based on the knowledge of resources by all stakeholders.

13. REFERENCES

1. Nyimba District Integrated Development Plan (IDP) 2021.
2. JICA 2011. Participatory Land Use Planning: Community Based Natural Resource Management. Available: <https://www.jica.go.jp/project/english/easttimor/003/index.html>
3. Food and Agriculture Organization (FAO). 1993. Guidelines for Land-Use Planning. Rome, Italy.
4. Liversage, H and Mangiafico, M.E. 2014. How to do Participatory land-use planning: Land tenure toolkit.
5. GIZ. 2012. Land Use Planning: Concept, Tools and Applications. Federal Ministry for Economic Cooperation and Development (BMZ): Eschborn, Germany. p. 268.
6. Ayantoye K, Amao J. O. and Fanifosi G. E. 2017. Determinants of livelihood diversification among rural households in Kwara State, Nigeria.
7. Malcolm, J. R., Liu, C., Neilson, R. P., Hansen, L. & Hannah, L. 2006. Global Warming and Extinctions of Endemic Species from Biodiversity Hotspots.
8. Kassa W.A. 2018. Determinants and challenges of rural livelihood diversification in Ethiopia: Qualitative review. Journal of Agricultural Extension and Rural Development.
9. Mitchell D, Buxton M and Budge T. 2004. Assessing the Role of Land Use Planning in Natural Resource Management. Spatial Planning for Sustainable Development.
10. Schwedes, S and Werne, W. 2010. Ministry of Lands and Resettlement and German Technical Cooperation in the context of the Modelling Land Use Planning Project.
11. Negash, M. 2012. Local Level Participatory Land Use Planning Manual: Concepts and steps in LLPLUP. Ministry of Agriculture Rural Land Administration and Use Directorate.
12. Mutea. E, Bottazzi. P, Jacobi. J, Kiteme. B, Speranza. C.I and Rist. S. 2019. Livelihoods and Food Security Among Rural Households in the North-Western Mount Kenya Region
13. Abu, G. A., and Soom, A. (2016). Analysis of factors affecting food security in rural and urban farming households of Benue State, Nigeria.

14. Shitumbanuma. V, Simfukwe. P, Kalala. D, Kaininga. B, Gondwe. B, Nambala. M, Kabwe. S, Siulemba. G, Kapulu. N, Lungu. O and Mutege. J. 2014. Integrated Soil Fertility Management in Zambia.
15. FAO (2006). Food security. Policy Brief 2, 1–4.

ANNEXES

Annex 1: Chiweza Ward By-Laws on Land Use and Natural Resource Management

Preamble

Having resources identified and zoned is not a guarantee that there will be proper management, hence establishing rules is key to sustainable management of all natural resources. The communities of Chiweza ward did not want just to leave things at zoning level but they also formulated by-laws pertaining the natural resources that were identified in their community. Traditionally, no one is allowed to give a penalty to the offenders except the chief as he is the custodian of natural resources in the chiefdom.

GOVERNANCE RULES FOR MOMBE WARD

Resource/Development	Rules	Penalty To Offenders
Water Resources	No farming activities around the dam and other water bodies, the buffer zone of 50m shall be applied.	Direct report to HRH Chief Ndake
	No illegal fishing on the dam.	
	No depositing of poisonous chemicals in the dam.	
	All gardening activities to be done on one side of the dam to allow animals to have access to water.	Face appropriate punishment
	No cutting down of trees around the dam.	
	No farming activity to be done around the buffer zone of the dams and streams.	
Forest	No cutting down of trees in forest area	Face punishment from HRH Chief Ndake
	No charcoal burning in the forest	
	No cattle grazing in the forest	
	No farming activities in the forest area	
	No fire burning in the forest	
	No fetching of firewood without permission in the forest.	

Trading Area	Only the development committee recognised by the chief has the right to allocate plots.	Report to the chief.
	No farming activities are allowed in the trading area	
Upgrading of School and Clinic	No encroachment in the area set aside for school and clinic expansion	Report to the Chief
	No cutting down of trees around the school and clinic premises	
	No farming activities are allowed	
Expansion of Agricultural Area	Anyone wishing to expand the field must get consent from the chief.	Any offender shall be reported to the chief for further action
Hunting	No hunting is allowed in the chiefdom	Any offender shall be reported to the chief for further action
Telecommunication Towers	No vandalism of Telecommunication Towers. No farming within the radius of 20m of the Telecommunication Towers.	Inform the chief and report to the police.

Table 16: Offences and Penalties

Annex 2: Meeting Attendance Registers

Indunas Meeting

CHWEZA WARD: CHWEZA PRIMARY SCHOOL

MINISTRY OF GREEN ECONOMY AND ENVIRONMENT

Zambia Integrated Forest Landscape project - Attendance Register

Title of Training/Meeting: ZAMBIA INTEGRATED LANDSCAPE FOREST SCAPE PROJECT (ZIFLP)

Date: 28-03-2022

N	Name	Gender	Institution	Email Address	Phone #	NRC #	Signature
1	Joyce Zulu	F			0779741569	529696	J. Zulu
2	JAPHET PHIRI	M.					J. Phiri
3	FELISIO TEMBO	M.	TEACHER SCHOOL	CHWEZA P. SCHOOL	077 6155892	109781/137/1	F. TEMBO
4	HICHINKHOMWA	M.	NCHI MEMBER	CHWEZA WARD	0957832486	134017157/1	Hichinkhomwa
5	LENARD DAKA	M.	HEADMAN CHIWANBYA	CHWEZA WARD	NIL	-	L. DAKA
6	RUBEN A-TEMBO	M.	Z-CHAIR - MCHIMADZI	SCHEMES	0965775006 0977 826667	19860/53/1	R. A-TEMBO
7	REV. DEKON TEMBO	M.	R.C.Z	dickentembo69@gmail.com	0977153096	262762/68/1	Rev. Dekon Tembo
8	HIMAN DINA	M.	CHWEZA WARD	DINA V/GE	0975 96634	249930/57/1	H. DINA
9	H. DANI	M.	CHWEZA WARD	DANI V/GE	0950460337	550876/11/1	H. DANI
10	JOSEPH PHIRI	M.	CHWEZA	NYANGU V/GE	0977485795	291447/11/1	J. Phiri

MINISTRY OF GREEN ECONOMY AND ENVIRONMENT

Zambia Integrated Forest Landscape project - Attendance Register

Title of Training/Meeting: ZAMBIA INTEGRATED LANDSCAPE PROJECT (ZIFL)
Date: 28/3/2022

N	Name	Gender	Institution	Email Address	Phone #	NRC #	Signature
1	H/ JONATHAN H- MULENGA	M	SOWELANT VICE	CHWEZA WARD	0779763361	—	H/manuel Sowelant
2	H/GERANT	M	GERANT VICE	" "			H/GERANT
3	H/MAHO CHAMANGE M.	M	CHAMANGE VICE	" "	0974563170	288164/53/1	H/chamange
4	H/SITIYA	M	SITIYA VICE	" "			H/SITIYA
5	H/WAIT	F	WAIT VICE	" "			H/WAIT
6	H/DANIEL	F	DANIEL	" "			H/DANIEL
7	H/PITU	F	PITU	" "			H/PITU
8	H/HORIYABU	M	HORIYABU VICE	" "	0955229791	284180/53/1	H/HORIYABU
9	Sharon Nalulima	F	Hofmeyr Clinic	sharonnachi@gmail.com	0977644500	215084/42/1	
10	Z/CHAIRMAN	M	MCHIMAZI SCHOOL MCHIMAZI				Z/chairman

MINISTRY OF GREEN ECONOMY AND ENVIRONMENT

Zambia Integrated Forest Landscape project - Attendance Register

Title of Training/Meeting: SENSITIZATION MEETING WITH VILLAGES AND HEAD PERSONS
Date: 28/03/2022

N	Name	Gender	Institution	Email Address	Phone #	NRC #	Signature
1	H/ NYAMASIMBE	F	H/WOMAN	CHWEZA WARD	—	—	H/woman
2	H/YOTAMU	F	H/WOMAN	YOTAMU	0950456246	—	H/WOMAN
3	H/ADONT	M	H/MAN	ADONT	—	288191/53/1	H/ADONT
4	Z/CHAIRMAN V.	M	Z/CHAIRMAN VICE	2/6	0956041046	559223/1/1	Z/chairman
5	H/MAN NYANGU	M	H/MAN	NYANGU VICE	097223257	248897/53/1	H/NYANGU
6	H/MAN CHIKULO	M	H/MAN	CHIKULO	—	—	H/MAN
7	H/MAN	M	H/MAN	CHENJE	—	310469/1/1	H/MAN
8	H/MAN MPETA	M	H/MAN	MPETA	0957487724	249069/52/1	H/MPETA
9	H/MAN KUPOTA	M	H/MAN	KUPOTA	0956028751	123293/54/1	H/MAN KUPOTA
10	H/MAN SALATIEL	M	H/MAN	SALATIEL	07170986	104546/57/1	H/MAN

Wano:
CHWEZA Primary School

MINISTRY OF GREEN ECONOMY AND ENVIRONMENT

Zambia Integrated Forest Landscape project - Attendance Register

Title of Training/Meeting: SENSITIZATION MEETING WITH VILLAGES AND HEADPERSONS (PLUP)
Date 28/03/-2022

N	Name	Gender	Institution	Email Address	Phone #	NRC #	Signature
1	BOMA BANDA	M CHIMAMANI	CHIMAMANI			440632/11/1	B B d
2	LERNARD DATA	M CHIMAMANI	CHIMAMANI School				
3	GENESIS NYANGU	M	MPETA			144697/1/1	G...
4	PAUL LUNGU	M	GOSIYE			288614/1/11	P Lungu
5	PETER DARA	M	BUMULO			126154/1/1	P...
6	BLACKSON MUKWERO	M	ACHILISA			317095/1/1	M...
7	FANWELL MWANZA	M	SALLOZA		0955556792	221520/1/1	F...
8	JIMMY TEMBO	M	MOSE ACHIMBANI		0953206203	287934/1/1	J Tembo
9	RILENDI TERIBO	F	CHWANDOLA ACHIMBANI		0971048759	150101/1/1	R...
10	CHRISTINE NGOMA	F	NYACHIMBANI		0979876740	352565/1/1	C...

First Village Meeting

MINISTRY OF GREEN ECONOMY AND ENVIRONMENT
Zambia Integrated Forest Landscape project - Attendance register

CHWAZA ZONE

Title of Training/Meeting: Community Engagement meeting of climate primary Area. (PUP)
Date: 30/03/2022

S/N	Name	Gender	Institution	Email Address	Phone #	NRC #	Signature
1	JOHN LUNGU	M		NYAMASIMBE	077684429	39498/53/1	J. Lungu
2	SAMSON BANDA	M		NYANGU		104774/53/1	S. Banda
3	ACKSON LUNGU	M		KILIKI	0979799715	221059/53/1	A. Lungu
4	NELSON MWANZA	M	-	NYANGU	0976281630	-	N. Mwanza
5	ALICK Phiri	M		NYANGU	0170763029	248958/53/1	A. Phiri
6	WILLIAMU Phiri	M		NYANGU	0970297432	424713/53/1	W. Phiri
7	WILSON DAKA	M		Holiapu	0955229791	288130/53/1	W. Daka
8	ROBSON Phiri	M		ADON	0972508146	104638/53/1	R. Phiri
9	Iwelo Njobvu	M		NYANGU	0971489481	139535/53/1	I. Njobvu
10	JOHN TEMBO	M		NYANGU	0970990879	-	J. Tembo
11	ELUMAKA DAKA			NYANGU	0974394734	130907/53/1	J. Daka

MINISTRY OF GREEN ECONOMY AND ENVIRONMENT

Zambia Integrated Forest Landscape project - Attendance Register

Title of Training/Meeting: Community Engagement meeting of Chingwa primary school (PLUP)

Date 30/03/2021

S/N	Name	Gender	Institution	Email Address	Phone #	NRC #	Signature
1	Rouzi Zulu	F		NYANGU	-	-	R. Zulu
2	Moria maseko	F		NYANGU	-	-	M. Maseko
3	ELITA ZULU	F		NYANGU	0970733814	133823/57/1	E. Zulu
4	Mary Tembo	F		NYANGU	-	-	M. Tembo
5	Jenek Zulu	F		NYANGU	0779784410	-	J. Zulu
6	LEVENIA SAKALA	F		NYANGU	0972592158	296278/53/1	L. Sakala
7	NAOMI DAKA	F		HOLYABA	-	-	N. DAKA
8	FANALLY phiri	F		CHEKELAKI	-	-	F. Phiri
9	AGNESS SAKALA	F		NYANGU	-	-	A. Sakala
10	FANALLY phiri	F		NYANGU	-	-	F. Phiri

MINISTRY OF GREEN ECONOMY AND ENVIRONMENT

Zambia Integrated Forest Landscape project - Attendance Register

Title of Training/Meeting: Community Engagement meeting of Chingwa primary school (PLUP)

Date 30/03/2021

S/N	Name	Gender	Institution	Email Address	Phone #	NRC #	Signature
1	FRECKS Tembo	M		NYANGU	0974629226	249341/53/1	F. Tembo
2	MOSES DAKA	M		HOLYABA	-	-	M. DAKA
3	MASAUU PHIRI	M		ADDNI	0973184566	1096253/2	M. Phiri
4	JAMES MWAIZA MWAIZA	M		ADDNI	0977645971	359057/53/1	J. Mwaiza
5	SEKELANI TEMBO	M		NEJ NYANGU	0976333440	112428/53/1	S. Tembo
6	CHOLA Chumbo	M		KILIKI	-	-	C. Chola
7	RAMISONI PHIRI	M		ZILEKE	-	-	R. Tembo
8	EVENS PHIRI	M		KILIKI	0970717826	286179/53/1	E. Phiri
9	AARON DAKA	M		ADDNI	-	-	A. DAKA
10	SOSTEN TEMBO	M		DAVITE	0776752824	125049/53/1 1205	S. Tembo

MINISTRY OF GREEN ECONOMY AND ENVIRONMENT

Zambia Integrated Forest Landscape project - Attendance Register

Title of Training/Meeting: Community Engagement meeting of Chinanga primary Area (PLUP)

Date: 30/05/2022

S/N	Name	Gender	Institution	Email Address	Phone #	NRC #	Signature
1	MIKE MUMBA	M		ZELIRE	0975354613	193423/57/1	M...
2	Sitonile Mwanza	M		Yosefe	0977429130	-	S. Mwanza
3	PETER Langa	M		NYANGU	-	-	P. Langa
4	JONEL Tembo	M		NYANGU	0978112558		J. Tembo
5	Maiko phiri	M		ZELEKE	0978523489 0933	308344/53/1	M. Phiri
6	Fournell Zulu	M		NYANGU	09744177558	243090	
7	OBISTER Mwanza	M		NYANGUSIBA	0973927284	-	
8	LYSON Tembo	M		DAVET	-	-	Tembo
9	EVANS Njobvu	M		Romans	-	-	E. Njobvu
10	Peter Mumba	M		Holiyambu	0974601094	104234/58/53	P. Mumba

MINISTRY OF GREEN ECONOMY AND ENVIRONMENT

Zambia Integrated Forest Landscape project - Attendance Register

Title of Training/Meeting: Community Engagement meeting of Chinanga primary Area (PLUP)

Date: _____

S/N	Name	Gender	Institution	Email Address	Phone #	NRC #	Signature
1	Kallawe mshaka	M	STANLEY TOWN COUNCIL		0973261586	37714/15/1	Kallawe
2	YOTAM CHUMBU	M	NYIMBA TOWN COUNCIL		0977714230	510919/11/1	Yotam
3	DONALD SEKUTE	M	DOP (SD)		0978133404	215061/65/1	Donald
4	PETER BANDA	M	HOFMEER DART & GOLF SCHOOL		0977289411	141550/54/1	Peter
5							
6							
7							
8							
9							
10							

MINISTRY OF GREEN ECONOMY AND ENVIRONMENT

Zambia Integrated Forest Landscape project - Attendance Register

Title of Training/Meeting: Community Engagement meeting of chiwanga primary (PLUP)
Date: 20/03/2022

S/N	Name	Gender	Institution	Email Address	Phone #	NRC #	Signature
1	PAYANI Sakala	F		CHEKELANI	-	-	P-Sakala
2	MARGRET Phiri	F		nyamasimbe	-	-	M. Phiri
3	ESTER LUNGU	F		NYANGU	-	-	E. Lungu
4	AMAKSI KIBUYU	M	INDUNA	SAMUEL V4	0974638135	248325/331	AMAKSI
5							
6							
7							
8							
9							
10							

MINISTRY OF GREEN ECONOMY AND ENVIRONMENT

Zambia Integrated Forest Landscape project - Attendance Register

Title of Training/Meeting: WATER USER GROUP MEETING CHIWEZA
Date: 02/04/2022

CHIWEZA

S/N	Name	Gender	Institution	Email Address	Phone #	NRC #	Signature
1	MUMBA MABUTO	M	CHIMANGENI		0950595208	281739/152/1	MUMBA
2	LUNGU CHIPWANI	M	GHOSITE		095708335	135451/57/1	Lungu
3	Lungu Thomas	M	GHOSITE			2894205/11	Lungu
4	Mumba Satoru	M	Chimungu		0976295090		Satoru
5	Zulu Aleqa	M	Idakane		0957214835		A Zulu
6	Lungu Edward	M	Ghosite			85681/69/1	Lungu
7	Lungu Achilisa	M	Achilisa				Lungu Achilisa
8	Zulu Ilona	M	ii				Zulu Ilona
9	Tembo Monica	F					Monica
10	Murale Isac	F	Achilisa				Isac

Cross SITE ZONE

MINISTRY OF GREEN ECONOMY AND ENVIRONMENT

CHWEEZA WARD

Zambia Integrated Forest Landscape project - Attendance Register

Title of Training/Meeting: COMMUNITY SENSITIZATION MEETING ON PLUP
Date 02/04/2022

MEETING

S/N	Name	Gender	Institution VILLAGE	Email Address	Phone #	NRC #	Signature
1	IBACK NJORU	M	MASHUMU ZOGEB			241676/53/1	I. NJO
2	ESTHER MUMBA	F	GOSITE		0950151214		
3	ENELESS TEMBO	F	CHIMANGENI		0957487690		
4	KACHIBO SAKALA	M	ABUWELL			767376/1/1	K. L.
5	LYSON TEMBO	M	NYACHIBWI				L. TEM
6	REGINAH LUNGU	F	ABUWELL		0956785593	144765/57/1	R. Lungu
7	MARGRET MWANZA	F	CHIMANGENI				M. Mwanza
8	SUSTINA MUMBA	F	GOSITE			112470/57/1	S. Mumba
9	MIKE MDAKA	M	GOSITE				M. M.
10	NISANIGU TEMBO	M	ACHILISA				A. TEMBO

MINISTRY OF GREEN ECONOMY AND ENVIRONMENT

CHWEEZA

Zambia Integrated Forest Landscape project - Attendance Register

Title of Training/Meeting: COMMUNITY SENSITIZATION MEETING ON PLUP
Date 02/04/2022

S/N	Name	Gender	Institution VILLAGE	Email Address	Phone #	NRC #	Signature
1	ILESS LUNGU	F	SAILOTA				I. Lu
2	ALIDA NYANGU	F	ACHILISA				A. NYANGU
3	ALICE PHIRI	F	GOSITE		0977682451	249775/53/1	A. Phiri
4	ROSEMARY DAKA	F	GOSITE				R. DAKA
5	LEXINA LUNGU	F	GOSITE				L. Lungu
6	ENGLESS PHIRI	F	GOSITE				E. P.
7	DAILESS PHIRI	F	GOSITE		0953356577	104900/57/1	D. Phiri
8	LIZZY LUNGU	F	GOSITE			104900/57/1	L. L.
9	ANASTAZIA LUNGU	F	GOSITE		0777584428		A. L.
10							

MINISTRY OF GREEN ECONOMY AND ENVIRONMENT

CHIMWEZA

Zambia Integrated Forest Landscape project - Attendance Register

Title of Training/Meeting:

Date 02/04/2022

	Gender	Institution	Email Address	Phone #	NRC #	Signature
we mshika	M	Ntamba Town Council	mshikawhite@gmail.com	0977261586	370714/5811	
Kson. w. Tembo	M	DANI		0950460339	550876/1111	
WARD MULESA	M	N.T.C	Stalcehwa@gmail.com	097729978	86122/6711	
ard Chipwaga	M	N.D.L.A	Edwardchipwaga@gmail.com	097557110	12127/5711	
IAS MULESA	M	ELA	m-mulephwa@gmail.com	0979-201445	110462/5711	
IZETE TEMBO	M	GOSITE		0976000815	104907/5711	M. Tembo
JDANI TEMBO	M	GOSITE		09770777915	130920/5711	Z. Tembo
SI PHIRI	F	CHIMANCANI				A. PHIRI
LIA TEMBO	F	CHIMANCANI				A. TEMBO
JO LUSQU	M	GOSITE		0955141739	589117/1111	Z. Lusqu

MINISTRY OF GREEN ECONOMY AND ENVIRONMENT

CHIMWEZA

Zambia Integrated Forest Landscape project - Attendance Register

Title of Training/Meeting:

Date 02/04/2022

S/N	Name	Gender	Institution VILLAGE	Email Address	Phone #	NRC #	Signature
1	MAMEA WILLIAM	M	ABUWELU			121902/5711	
2	KENGE MULESA	M	CHIMANCANI		0953508765		
3	PHIRI MANDISSA	M	ACHLESA				
4	PHIRI PAMESANI	M	II				
5	Zulu Akeras	M	Danny				
6	Mameta JACKSON	M	Abuwelo		0956044694	295176/5311	
7	PHIRI NGIZI	M	Gosite		0717494595	13968/5711	
8	Phiri Lukasi	M	Abuwelo		0954609628	1247557/1	
9							
10							

Zambia Integrated Forest Landscape project - Attendance Register

Title of Training/Meeting: _____

Date 02/04/2022

S/N	Name	Gender	Institution- VILLAGE	Email Address	Phone #	NRC #	Sign.
1	ELIZA LUNGU	F	ABUNWELL				E.
2	BEAUTY LUNGU	F	GOSITE				B.
3	FANELLY MWANZA	F	GOSITE				F.
4	MANDA PHIRI	M	ACHILISA		0953300264		M.
5	AZELE LUNGU	M	ACHILISA		0976894320	133288/57/1	B.
6	LYSON Zulu	M	GOSITE		0957745149	230429/18/1	Y.
7	DABWISO LUNGU	M	GOSITE				D.
8	SHADRECK PHIRI	M	ABUNWELL				S.
9	ABISON Zulu	M	ABUNWELL				A.
10	DAVI Zulu	M	ACHILISA				D.

MINISTRY OF GREEN ECONOMY AND ENVIRONMENT

Zambia Integrated Forest Landscape project - Attendance Register

Title of Training/Meeting:

Date: 2/04/2022 ENGAGEMENT MEETING

S/N	Name	Gender	Institution	Email Address	Phone #	NRC #	Sign
1	MULUKWA MWAKA	M	ABUNWELL	Mwaka Mulukwa @ g-mail.com	0915598218	325659/741	HA
2	BOMA BANDA	M	ABUNWELL			440622/1/1	R
3	YAJETI PHIRI	M	ABUNWELL			10861257/1	
4	REDSON LUNGU	M	ACHILISA		0953641350	1144929/57/1	
5	ALEX SAKALA	M	CHIMANGENI		0955711362		A
6	SWETAKA TEMBO	M	GOSITE				ST
7	JERVIOUS Zulu	M	JERVIOUS				JZ
8	SANKHULANI Zulu	M	GOSITE				S
9	WILSON DAKA	M	ABUNWELL		09716499268	108962/57/1	
10	HARRISON MUMBA	M	GOSITE		0955 229791	282180/53/1	W
						104107/57/1	

GOSITE
CHINCEZA

MINISTRY OF GREEN ECONOMY AND ENVIRONMENT
Zambia Integrated Forest Landscape project - Attendance Register

Title of Training/Meeting:

Date 02/04/2022

COMMUNITY MEETING ON PLUP PROCESS

S/N	Name	Gender	Institution Village	Email Address	Phone #	NRC #	Signature
1	JOSEPH SAKALA	M	GOSITE		097288920		J. S.
2	ELIAS PHIRI	M	CHIMANGENI		0950461347	288868/53/1	E. PHIRI
3	CHRISTINA PHIRI	F	SAILOTA				C. P.
4	EMELIA SAKALA	F	NYELELE				E. S.
5	IVONY LUNGU	F	GOSITE				I. L.
6	IDAH TEMBO	F	GOSITE				I. T.
7	MARY TEMBO	F	GOSITE				M. T.
8	GETRUDE PHIRI	F	GOSITE				G. F.
9	PRICILAR LUNGU	F	GOSITE			112338/57/1	P. Lungu
10	JENIPHER TEMBO	F	GOSITE				J. T.

MINISTRY OF GREEN ECONOMY AND ENVIRONMENT

Zambia Integrated Forest Landscape project - Attendance Register

Title of Training/Meeting: COMMUNITY SENSITIZATION MEETING ON PLUP PROCESS

Date 31-03-22

S/N	Name	Gender	Institution	Email Address	Phone #	NRC #	Signature
1	AGNESS MUPFIZA	F	Chimankoko		-	-	A. Mupfiza
2	Grace Phiri	F	Kupata		-	-	G. Phiri
3	Agness Phiri	F	Kupata		-	-	A. Phiri
4	Mary Phiri	F	Kupata		-	-	M. Phiri
5	Agness Phiri	F	Kupata		-	167159/55/1	A. Phiri
6	Karinda Phiri	F	Kupata		-	109089/57/1	K. Phiri
7	Phiri Mwanjima	F	Kupata		-	-	P. Mwanjima
8	Sarah Tembo	F	Chite		-	-	S. Tembo
9	Alexa Lungu	F	Chite		-	162934/57/1	A. Lungu
10	AKAIDAH LUNGU	F	Chimankoko				A. Lungu

MONSWE 2018

MINISTRY OF GREEN ECONOMY AND ENVIRONMENT

Zambia Integrated Forest Landscape project - Attendance Register

Title of Training/Meeting: COMMUNITY MEETING ON PLUP CONCEPT - CHWERA WARD
Date: 31/03/2022

S/N	Name	Gender	Institution	Email Address	Phone #	NRC #	Signature
1	LUXWSON TEMBO	M	WHITE		0916387483	251742/16/1	J. Tembo
2	MUNIFA NAMBO	M	DANI		097633022	22175453/1	M. Joo
3	CHLOMBO SIMON	M	"		0955001504	131345/56/1	Ph
4	PETER Tembo	M	WHITE		0765218015	291665/53/1	Ph
5	M. Tembo	M	Chinsoko.A			201314/53/1	M. Tembo
6	MPSAUSA Tembo	M	WHITE				Ph
7	Rubben Mwanza	M	ISANGAMBO				R. M
8	Symon Mwanza	M	WHITE				S. M
9	David Phiri	M	Kupata		0771307580		D. Ph
10	JACKSON TEMBO	M	WHITE		0962637579	909957/11/1	J. Tembo

MINISTRY OF GREEN ECONOMY AND ENVIRONMENT

Zambia Integrated Forest Landscape project - Attendance Register

Title of Training/Meeting: COMMUNITY SENSITIZATION MEETING ON PLUP PROCESS
Date: 31-03-2022

S/N	Name	Gender	Institution	Email Address	Phone #	NRC #	Signature
1	Munda Phiri	M	White				M. Ph
2	Paul Mubwa	M	White				P. M
3	Astone Tembo	M	Ziwaniwana			200205/53/1	A. Tembo
4	EVANCE Tembo	M	Ziwaniwana			24-3598/6/1	E. Tembo
5	ALBERT Tembo	M	DANI				A. Tembo
6	STANDWELL SAKALA	M	THEODI		0975092526	182362/53/1	S. Sakala
7	FANWELL DATTA	M	CHINKHOMWA		0978093688	134019/53/1	F. Datta
8	ANELINA MABUKU	F	SANGAMBO				A. M
9	CHARLOTTE NYAMBA	F	White				C. Nyamba
10	UNISI PHIRI	F	Chinsoko.				U. Phiri

MINISTRY OF GREEN ECONOMY AND ENVIRONMENT

Zambia Integrated Forest Landscape project - Attendance Register

Title of Training/Meeting: COMMUNITY SENSITIZATION MEETING ON PLUP PROCESS

Date: 31-03-22

S/N	Name	Gender	Institution	Email Address	Phone #	NRC #	Signature
1	Lebbie Mubwa	F	Dina		-	-	P. Mubwa
2	Serika Mubwa	F	Chimankha		-	-	S. Mubwa
3	Esther Mubwa	F	Dina		-	-	F. Mubwa
4	Chakumbwa Lungu	F	Dina		-	-	C. Lungu
5	Temala Phiri	F	Thandi		-	-	T. Phiri
6	Elia Tembo	F	White		-	-	E. Tembo
7	Romans Tembo	F	White Thandi		0979997914	133015/101	R. Tembo
8	FAIDES TEMBO	F	CHIMANKHA		0979997914	133015/101	F. Tembo
9	CHADESE Zulu	F	CHIMANKHA		0953206041	103965/151	F. Zulu
10	Ailes Mumba	F	WHITE		-	-	A. Mumba

MINISTRY OF GREEN ECONOMY AND ENVIRONMENT

Zambia Integrated Forest Landscape project - Attendance Register

Title of Training/Meeting: COMMUNITY SENSITIZATION MEETING ON PLUP PROCESS

Date: 31-03-22

S/N	Name	Gender	Institution Village	Email Address	Phone #	NRC #	Signature
1	Zola Mubwa	M	Chimankha		0951774642	-	Z. Mubwa
2	Elias Tembo	M	Dina		0961019620	2891214/51	E. Tembo
3	Isaac Zulu	M	Dina		0950761891	-	I. Zulu
4	SAKALA ARNELI	M	KUPITA		0956129751	123298/51	A. Sakala
5	Jedemba Phiri	M	Thandi		-	211829/331	J. Phiri
6	Masauko Sakala	M	KUPITA		-	-	M. Sakala
7	Masauko Mubwa	M	White		-	189092/531	M. Mubwa
8	Mona Zulu	M	Chimankha		0970325577	-	M. Zulu
9	GreatSON Sika	M	Mwandizani		0978201826	183362/531	G. Sika
10	Joseph Mubwa	M	White		-	243566/531	J. Mubwa

MINISTRY OF GREEN ECONOMY AND ENVIRONMENT

Zambia Integrated Forest Landscape project - Attendance Register

Title of Training/Meeting: COMMUNITY SENSITIZATION MEETING ON FLUP PROCESS

Date: 31-03-22

S/N	Name	Gender	Institution	Email Address	Phone #	NRC #	Signature
1	BRASHO TEMBO	M	white		0956041503	936867/531	P. Tembo
2	DANHA IREEN	F	chinkhomwa		-	-	I. Sak
3	ANA SAKALA	F	chinkhomwa		-	-	A. Sakala
4	FESTAR SOKONI	F	chinkhomwa		-	64025/1	F. S
5	GIFT LUNGU	F	chinkhomwa		-	-	G. L
6	SOSTAIN K. LUNGU	M	DANI		0956 041 650	166854/531	SKW
7	MOSSES DANHA	M	white		0962636418	2816475/1	M. DANHA
8	ELIAS OMUSYI	M	ZHA		0097811241	88442/1	ELI
9							
10							

MINISTRY OF GREEN ECONOMY AND ENVIRONMENT

Zambia Integrated Forest Landscape project - Attendance Register

Title of Training/Meeting: COMMUNITY SENSITIZATION MEETING ON FLUP PROCESS

Date: 31-03-22

MAMBWE

S/N	Name	Gender	Institution	Email Address	Phone #	NRC #	Signature
1	Tipkalege Phiri	F	Dani		-	-	T. Phiri
2	Doriss Tembo	F	white		-	-	P. Tembo
3	Bitris Tembo	F	white		-	-	B. Tembo
4	Rosemary Phiri	F	white		-	-	
5	Mwazion Phiri	F	white		-	184139/531	M. Phiri
6	Fales Phiri	F	white		-	-	F. Phiri
7	Elizabeth Mumba	F	white		-	-	E. Mumba
8	Tihafe Lungu	F	Dani		095460979	-	T. Lungu
9	GRACE DANHA	F	Dani		113538/531	143538/531	G. DANHA
10	Mercy DANHA	F	Dani		-	134263/531	M. DANHA

MINISTRY OF GREEN ECONOMY AND ENVIRONMENT

Zambia Integrated Forest Landscape project - Attendance Register

Title of Training/Meeting: COMMUNITY SENSITIZATION MEETING ON PLUP PROCESS

Date 31-03-22

Momb

S/N	Name	Gender	Institution	Email Address	Phone #	NRC #	Signature
1	PAL Lungu	M	Zimbabwe			250011/11	P. Lungu
2	Sonic Phiri	M	WHITE		0960469159	1047145/5711	By
3	Goodson Ngobira	M	Zimbabwe		0954086935	1065366/11	NG
4	ANISA Mwanza	M	CHIMSO		0957636243	253222/561	Amwiza
5	Alfred Mumba	M	Senigumba		-	-	A. mumba
6	Aless Mumba	F	White		-	-	A. mumba
7	Emmanuel Phiri	M	KUPOTA		0950165940	138116/5711	Phiri
8	Esau Zulu	M	KUPOTA		0956979308	138525/5711	Zulu
9	Leason Zulu	M	Kupota		-	-	Zulu
10	Blackson Mumba	M	Chenise	DM77@gmail.com	0972172303	107923/5711	Blackson

MINISTRY OF GREEN ECONOMY AND ENVIRONMENT

Zambia Integrated Forest Landscape project - Attendance Register

Title of Training/Meeting: COMMUNITY SENSITIZATION MEETING ON PLUP PROCESS

Date 31-03-22

Momb

S/N	Name	Gender	Institution	Email Address	Phone #	NRC #	Signature
1	DOROTHY TEMBO	F	DANI		-	550815/11	DOROTHY
2	Getu Zulu	F	DANI		-	-	Getu
3	FANNERY TEMBO	F	WHITE		-	215622/5711	Fannery
4	Mavis Mwanza	F	DANI		-	-	Mavis
5	VAINES LUNGU	F	WHITE		-	-	Vaines
6	BESTAT TEMBO	F	DANI		-	-	Bestat
7	Getu TEMBO	F	WHITE		-	-	Getu
8	MARABAZUA TEMBO	F	WHITE		0953356507	143862/10/1	Marabazua
9	MARY BANDA	F	Saniyamba		-	124725/5711	M. Banda
10	Elizabeth Sakala	F	Dani		-	-	E. Sakala

Zambia Integrated Forest Landscape project - Attendance Register

Title of Training/Meeting: COMMUNITY SENSITIZATION MEETING ON PLUP PROCESS
Date: 01/04/2022

S/N	Name	Gender	Institution	Email Address	Phone #	NRC #	Signature
1	SHAC Zulu	M	11 3		0863824483	100915/10/1	Shac
2	Sambo Tembo	M	11 3			117377/57/1	Sambo
3	EDWARD TEMBO	M	11 3		0977354333	137601/57/1	Ed
4	Humphrey Mwanje	M	11 3		0770060606	179027/1/1	Humphrey
5	Moses Nyankaka	M	11 3		0978921386	253049/53/1	Moses
6	Yotamu Nyobu	M	11 3		0971150045		Y. Nyobu
7	Aswell Mumba	M	Zone 4				Aswell
8	Mwila Stephen	M	Zone 3		0966885702	141717/5/1	Stephen
9	Richard Tembo	M	11 3		0955218875	277031/53/1	R. Tembo
10	DANIEL ZULU	M	Zone 3		0764286009		D. Zulu

Zambia Integrated Forest Landscape project - Attendance Register

Title of Training/Meeting: COMMUNITY SENSITIZATION MEETING ON PLUP PROCESS
Date: 01-04-2022

S/N	Name	Gender	Institution	Email Address	Phone #	NRC #	Signature
1	GERUDE SAKALA	F	ZONE 3	0978331190		26007/53/1	G. Sakala
2	SUSAN Tembo	F	Zone 3			322607/1/1	S. Tembo
3	GERUDE Lungu	F	Zone 7			112528/57/1	G. Lungu
4	LOTICA SAKALA	F	Zone 8				L. Sakala
5	SANILE ZULU	F	Zone 9				S. Zulu
6	DIPHINDA MUYILA	F	Zone 8	0976753739		236648/53/1	D. Muiyila
7	LAVELO PHIRI	F	Zone 3	0977377959		293859/52/1	L. Phiri
8	BETINA TEMBO	F	Zone 7			223944/53/1	B. Tembo
9	TISAMIC Lungu	F	Zone 7				T. Lungu
10	AGNESSE MBEWE	F	Zone 3	0965352776		-	A. Mbeve

MINISTRY OF GREEN ECONOMY AND ENVIRONMENT
Zambia Integrated Forest Landscape project - Attendance Register

CHIWERA WARD
NYAKAZOLO ZONE

Title of Training/Meeting: COMMUNITY SENSITIZATION ON PLUP PROCESS
Date: 01-04-22

S/N	Name	Gender	Institution	Email Address	Phone #	NRC #	Signature
1	HARRISON NGOMA	M	ZONE 8		0963939013	1340905711	[Signature]
2	STEVEN TEMBO	M	ZONE 3		0963967483	3004661111	[Signature]
3	MATTHEW LUNGA	M	ZONE 8		0976809444	2366485211	[Signature]
4	ALAND TEMBO	M	ZONE 7		N/A	1296095311	T. Te
5	AGCIPOE ZONE 10	M	ZONE 7		N/A	1658751111	A. Ze
6	DELI NGOMA	F	ZONE 3		N/A	1792125711	D. I
7	DIVER MBAD	M	ZONE 1		N/A		D. M
8	MAXWELL PHILI	M	ZONE 7		0966046928	1128331541	[Signature]
9	BANDA DICKSON	TM	ZONE 3		0974853264	1700031511	[Signature]
10	TEMBO JONKIM PHILIP	M	ZONE 8			1294561111	J. Tembo

MINISTRY OF GREEN ECONOMY AND ENVIRONMENT
Zambia Integrated Forest Landscape project - Attendance Register

CHIWERA WARD
NYAKAZOLO ZONE

Title of Training/Meeting: COMMUNITY SENSITIZATION ON PLUP PROCESS
Date: 01-04-22

S/N	Name	Gender	Institution	Email Address	Phone #	NRC #	Signature
1	MURARA ALBERT	M	ZONE 8	5700849	0961774648	2214561111	[Signature]
2	LONJEZANI TEMBO	M	ZONE 4		N/A	10825913311	Z. Te
3	MISHEKI TEMBO	M	ZONE 7		0979331668	5361931111	M. Tembo
4	ANDREW RALINGA	M	ZONE 3		0964550664	2809555311	[Signature]
5	SILVERING TEMBO	F	ZONE 8				S. Tembo
6	ELIPHA MWANZA	F	ZONE 3	0962524185		1183315711	Z. Mwanza
7	ESNAET TEMBO	F	ZONE 3	0969047339		1010341711	E. Tembo
8	ALLICE TEMBO	F	ZONE 3				A. Tembo
9	FALESS SAKOLA	F	ZONE 8				F. Sakola
10	ALLICE KALUSA	F	ZONE 3	0963476595		1327555511	A. Kalusa

MINISTRY OF GREEN ECONOMY AND ENVIRONMENT

Zambia Integrated Forest Landscape project - Attendance Register

Title of Training/Meeting: COMMUNITY SENSITIZATION ON PLUP PROCESS

Date: 01-04-22

CHWAZA WARD
MPAKATOKO ZONE

S/N	Name	Gender	Institution	Email Address	Phone #	NRC #	Signature
1	TEMBO KEMENI	M	ZONAS		0965775006		
2	TEMBO LOYA	M	" 3		0977097782065	194669/551	
3	Smart Sincanga	m	3		0966577975	298472/551	
4	Samaloni NABUNU	m	76		0975643852	189408/551	SSincanga
5	Thene M Sakoda	m	4		0977369576	574534/111	S-LJODRA
6	Bizimeli phiri	m	4		0961020239	184290531	Tim-Saka
7	SALIKSI. P. ZOMBO	m	86		0965354156	113068/551	B phiri
8	PANWELL MUMULA	m	6		0976810539	200541/751	B - 6
9	ZIKALI PHIRI	m	6		0955556792	221520/551	Timothy
10	MATILEN TEMBO	M	7		0963922253	N/A	Deci

MINISTRY OF GREEN ECONOMY AND ENVIRONMENT

Zambia Integrated Forest Landscape project - Attendance Register

Title of Training/Meeting: COMMUNITY SENSITIZATION ON PLUP PROCESS

Date: _____

CHWAZA WARD
MPAKATOKO ZONE

S/N	Name	Gender	Institution	Email Address	Phone #	NRC #	Signature
1	PHILIP MUMULA	M	70NE4.		0972-701210	112336/551	
2	TEMBO ASALE	M	" 6		0979 930052	104793/551	A. Tembo
3	JOHN TEMBO	M	" 8		0954 803994	181581/551	JOHN Tembo
4	BANDERA ZOMBO	M	" 8		0961020239	590036/551	B. Zombo
5	ACKKAD MUMULA	M	" 8		0977831130	198149/551	
6	BANDA CASTERN	M	" 8		0991460613	187413/551	B. Smith
7	Sakala M. Joseph	m	" 6			110741/551	J. M. Sakala
8	william munda	m	" 3		0977470691	181732/551	william
9	Simpfukwe Dandawa	m	" 7		0770600583	162790/551	Simpfukwe
10	Boyd Tembo	M	" 7				B. T.

MINISTRY OF GREEN ECONOMY AND ENVIRONMENT

Zambia Integrated Forest Landscape project - Attendance Register

Title of Training/Meeting: COMMUNITY SENSITIZATION ON PLUP PROCESS

Date: _____

CHWEZA WARD
MAYAKOLOKO 20

S/N	Name	Gender	Institution	Email Address	Phone #	NRC #	Signature
1	PHILIP MWAHITA	M	TONE 4.		0972-701210	112336/57/1	[Signature]
2	TEMBO ASALE	M	" 6		0979 880052 0959 803194	104793/57/1	A. Tembo
3	JOHN TEMBO	M	" 8.			111581/57/1	JOHN TEMBO
4	BANDERA ZEMBA	M	" 8.		0979 880052	112336/57/1	[Signature]
5	ACKKAD MWAHITA	M	" 8.		0979 880052	112336/57/1	[Signature]
6	BANDERA EASTERN	M	" 8.		0979 146017	112336/57/1	[Signature]
7	Sakala N. JOSEPH	M	" 6			112741/57/1	J. N. Sakala
8	WILIAM MWAHITA	M	" 3.		0977470681	112741/57/1	[Signature]
9	SAMUEL DAWSON	M	" 7		0770600953	112741/57/1	[Signature]
10	Boyd Tembo	M	" 7				B. T.

CHWERA: MPETA 2020

MINISTRY OF GREEN ECONOMY AND ENVIRONMENT

Zambia Integrated Forest Landscape project - Attendance Register

Title of Training/Meeting: COMMUNITY SENSITIZATION MEETING ON PLUP PROCESSES
Date: 30/03/2022

S/N	Name	Gender	Institution	Email Address	Phone #	NRC #	Signature
1	Dawson Lungu	M	Mpeta		0979011802		D
2	Makelani Phiri	M	Mpeta		0970762955		M
3	Lackson Saka	M	Mose		0972701357		
4	Kennedy Tembo	M	Mpeta		0976197600		
5	petal Tembo	M	Kaluzumba				
6	Mwape Mphande	M	Mpeta		0972105749	289101531	
7	Ilana Phiri	M	Mpeta				
	Lavemore Phiri	M	Mpeta		0971480856		
	Moses Tembo	M	Kamphomambwa		0970077700	289081531	
					0973224767		

mpeta

MINISTRY OF GREEN ECONOMY AND ENVIRONMENT

Zambia Integrated Forest Landscape project - Attendance Register

Title of Training/Meeting: COMMUNITY SENSITIZATION MEETING ON PLUP PROCESSDate 30-03-22

S/N	Name	Gender	Institution	Email Address	Phone #	NRC #	Signature
1	Misambu Kintu	M	Mpeta		0977599800	3998/57/1	M. Kintu
2	Lyson Banda	M	Mpeta		0973321559	-	L. Banda
3	Peter Daka	M	Kalizumba		0977480832	126156/51/1	P. Daka
4	Ahisai Sakala	M	Mose			145893/61/1	A. Sakala
5	ELECK SAKALA	M	MPETA		0967487724	249069/52/1	E. Sakala
6	Rainford phiri	M	Mpeta		0976137303	2026730/53/1	R. Phiri
7	parison Lungu	M	Mpeta		0977558766	135910/57/1	P. Lungu
8	Dameon Tombo	M	Mpeta		0970762974		D. Tombo
9	Boweloni phiri	M	Soweloni		0979743361		S. phiri
10	Mesambu Tombo	M	Gezambi				M. Tombo

mpeta

MINISTRY OF GREEN ECONOMY AND ENVIRONMENT

Zambia Integrated Forest Landscape project - Attendance Register

Title of Training/Meeting: COMMUNITY SENSITIZATION MEETING ON PLUP PROCESSDate 30-03-22

S/N	Name	Gender	Institution	Email Address	Phone #	NRC #	Signature
1	Ackim phiri	M	Mose		0979908697		A. Phiri
2	Kingsley Phiri	M	Mpeta		0973685513		K. Phiri
3	philimon Tombo	M	Mpeta		0979419261		P. Tombo
4	Brian Sakala	M	Mpeta		0977359953	1164503/57/1	B. Sakala
5	Joseph Mphande	M	Mpeta		09771049828		J. Mphande
6	Frederick Tombo	M	Mpeta		0972216707		F. Tombo
7	Christopher Yenda	M	Mpeta		0975966209		C. Tombo
8	Jackson Mumba	M	Mose			219377/53/1	J. Mumba
9	Nicholas phiri	M	Mose		0979466691		N. Phiri
10	Enock phiri	M	Mpeta		0976167294		E. Phiri

mpeta

MINISTRY OF GREEN ECONOMY AND ENVIRONMENT

Zambia Integrated Forest Landscape project - Attendance Register

Title of Training/Meeting: COMMUNITY SENSITIZATION MEETING ON PLUP PROCESSDate 30-03-22

Name	Gender	Institution	Email Address	Phone #	NRC #	Signature
Jozz Banda	M	Mpeta				J. Banda
Johna Nyabwa	M	Kaluzumbo				J. Nyabwa
Bergamin Nyabwa	M	Kaluzumbo				B. Nyabwa
Benson Daka	M	Kaluzumbo				B. Daka
Dickson phiri	M	Moso		095329992		D. phiri
Moses Lungu	M	Rumphanombove				M. Lungu
Gibson Sakale	M	Mpeta				G. Sakale
Ilack Sakale	M	Mpeta		0953366173		
Edward Ngulube	M	Mpeta		0776785779	281750/531	E. Ngulube
Martin Mwale	M	Mpeta				M. Mwale

mpeta

MINISTRY OF GREEN ECONOMY AND ENVIRONMENT

Zambia Integrated Forest Landscape project - Attendance Register

Title of Training/Meeting: COMMUNITY SENSITIZATION MEETING ON PLUP PROCESSDate 30-03-22

S/N	Name	Gender	Institution	Email Address	Phone #	NRC #	Signature
1	Joyce Zulu	F	Mpeta		0970657403	285615/121	J. Zulu
2	Rehuel Tombo	F	Mpeta		077679298		R. Tombo
3	Edinah Lungu	F	Mpeta				E. Lungu
4	Maxwell Mugo	M	Gazani		078342517	309021/1	M. Mugo
5	Adam phiri	M	putu			209913/071	A. phiri
6	Mary Mwale	F	Mpeta				M. Mwale
7	T. Tanga phiri	F	Mpeta				T. phiri
8	Jenniza Banda	F	Mpeta				J. Banda
9	Edinah phiri	F	Mpeta				E. phiri
10	Grace Sakale	F	Moso				

mpeta

MINISTRY OF GREEN ECONOMY AND ENVIRONMENT

Zambia Integrated Forest Landscape project - Attendance Register

Title of Training/Meeting: COMMUNITY SENSITIZATION MEETING ON PLUP PROCESSDate: 30-03-22

S/N	Name	Gender	Institution	Email Address	Phone #	NRC #	Signature
1	Isaac Mwanza	M	Mpeta		0776285886		I. Mwanza
2	Khangoni Tembo	M	Mpeta		0971077345		K. Tembo
3	Philip Lungu	M	Mpeta		0776189544		P. Lungu
4	Payphad Tembo	M	Mose				P. Tembo
5	Harison Mwale	M	Mpeta			1994006511	H. Mwale
6	Wendy Mphande	M	Mpeta				W. Mphande
7	Albert Zulu	M	Mose		0976639233	716047111	A. Zulu
8	Ilack Lungu	M	Mose		0976505179	2176651531	I. Lungu
9	Stella Sakala	F	Mpeta		0977677670	1627021671	S. Sakala
10	Fadallus Tembo	F	Mose				F. Tembo

MPETA

MINISTRY OF GREEN ECONOMY AND ENVIRONMENT

Zambia Integrated Forest Landscape project - Attendance Register

Title of Training/Meeting: COMMUNITY SENSITIZATION MEETING ON PLUP PROCESSDate: 30-03-22

S/N	Name	Gender	Institution	Email Address	Phone #	NRC #	Signature
1	Adiness Daka	F	Mpeta				A. Daka
2	Callimina Mumba	F	Mpeta				C. Mumba
3	Samuel phiri	F	Mose		0777817425		S. phiri
4	Esaki Tembo	F	Mose		0955965368	1575971571	S. Tembo
5	Salla Daka	F	Kanizumbo			922264661	S. Daka
6	Agnesi Mwanza	F	Mpeta			233264661	A. Mwanza
7	Bernard phiri	M	Mose		0978912387		B. phiri
8	Jacqueline Tembo	F	Mpeta		0972247400		J. Tembo
9	Aless Lungu	F	Mpeta				A. Lungu
10	Chaitano Mwale	F	Mpeta				C. Mwale

MTCIA

MINISTRY OF GREEN ECONOMY AND ENVIRONMENT

Zambia Integrated Forest Landscape project - Attendance Register

Title of Training/Meeting: Community SENSITIZATION MEETING ON PLUP PROCESSDate 30-03-22

S/N	Name	Gender	Institution	Email Address	Phone #	NRC #	Signature
1	Malisori John	M	Salebi		0974833500	1317715711	M. Agabwa
2	Kaluba phiri	F	Mpeta				K. phiri
3	Besant Kasoka	F	Kaluzumba				B. Kasoka
4	Mary phiri	F	Mose		095063990		M. phiri
5	Miszi Gondwe	F	Kaluzumba		0939373603		M. Gondwe
6	Alice Lungu	F	Mpeta				A. Lungu
7	Eline phiri	F	Mpeta				E. phiri
8	Fida phiri	F	Mose				F. phiri
9	Mabvuto phiri	M	Mose				
10							

Validation Meetings

Ministry Of Green Economy and Environment
Zambia Integrated Forest Landscape project - Attendance Register

Title Meeting: Community Meeting - Validation and Zoning Date 21-07-2023

S/N	Name	Gender	Village	Age	Phone #	NRC #	Signature
1	H/WOMAN	F	KIKIKI				<i>[Signature]</i>
2	TISIYE NZI DAKA	F	NYAMUSIMBE				<i>T. Daka</i>
3	EVANCE MWANZA	M	KOMANZI				<i>[Signature]</i>
4	STEPHEN LUNGU	M	ADONI	27	0974101441		<i>S. Lungu</i>
5	Edvard Ompanga	M	2-jumbi	34	0975571010	112127/57/1	<i>[Signature]</i>
6							
7							
8							
9							
10							
11							
12							
13							
14							
15							

CHIWEZA ZONE

Ministry Of Green Economy and Environment

Zambia Integrated Forest Landscape project - Attendance Register

Title Meeting: Community meeting - Validation and Zoning Date 21-07-2022

S/N	Name	Gender	Village	Age	Phone #	NRC #	Signature
1	JOSEPH. R. PHIRI	m	NYANGU	67	097748575	291447/11	[Signature]
2	Adoni Phiri	m	ADONI				A. Phiri
3	ALICK PHIRI	m	NYANGU				[Signature]
4	AGNESS SAKALA	F	NYANGU				A. Sakala
5	SHELY CHIKU	F	" "				[Signature]
6	LEVENTJA SAKALA	F	" "				[Signature]
7	BLACKSON TEMBO	M	ADONI				[Signature]
8	ENWANCO PHIRI	m	KIKIKI				E. Phiri
9	MOSES PHIRI	m	ZILEKE	45	0974816132	255737/31	[Signature]
10	GRACE MUMBA	F	YOSEFE	58			[Signature]
11	WIRE MWANZA	m	YOSEFE	20			W. Mwanza
12	WILSON SAKALA	m	KIKIKI				[Signature]
13	ACKSON LUNGU	m	KIKIKI				A. Lungu
14	LAMSON PHIRI	m	ZILEKE	38			[Signature]
15	NELSON PHIRI	m	NYANGU				[Signature]

GHOSTIE ZONE

Ministry Of Green Economy and Environment

Zambia Integrated Forest Landscape project - Attendance Register

Title Meeting: Community meeting - Validation and Zoning Date 22/07/2022

S/N	Name	Gender	Village	Age	Phone #	NRC #	Signature
1	Samuel musale	M	Gosite		0972512943	1309151571	[Signature]
2	Regina Lungu	F	Abuselo	43	0956785573	266741571	B. Lungu
3	Yafet Phiri	m	Abuselo	39		108621571	Y. Phiri
4	Tisaine Phiri	F	Abuselo	35	0979525307		T. Phiri
5	hekesina lungu	F	Achilisa	40			[Signature]
6	Grece Tembo	F	Chimangeni	51			[Signature]
7	lyness mumba	F	Abuselo	46			[Signature]
8	chisani Daka	F	Sevias	21			[Signature]
9	Alaidah Zulu	F	Sevias	19			[Signature]
10	Musale Kanyamba	F	Abuselo	28			[Signature]
11	Nyangu lungu	F	Chilisa	35			[Signature]
12	Evelina lungu	F	Sevias	32			[Signature]
13	Adelia Zulu	F	Sevias	36			A. Zulu
14	Ronart Tembo	F	Achilisa	54		501170/11	[Signature]
15	Benson Nyangu	M	sailota	31	0979885512	1309091571	B. NYANGU

GHOSITE ZONE

Ministry Of Green Economy and Environment

Zambia Integrated Forest Landscape project - Attendance Register

Title Meeting: Community Meeting - Validation and Zoning Date 22/07/2022

S/N	Name	Gender	Village	Age	Phone #	NRC #	Signature
1	Avulundiya Mumba	M	Gosite	34			
2	Bechan hingu	M	Chimangeni	49	0770298913	144806/57/1	B. Mumba
3	Chimangeni Phiri	M	Chimangeni	43	0974565170	288164/58/1	Phiri
4	Wandson Phiri	M	Achilisa	68			
5	Iswell Zulu	M	Achilisa	31	0950461862	130890/57/1	Iswell
6	Caphas Phiri	M	Achilisa	42			
7	Alison Zulu	M	Abuselo	59			A. Zulu
8	Redson hingu	M	Achilisa	51	0950462143	553254/1/1	Redson
9	Nabuto ngulwa	M	Abuselo	22	0770602563	157814/57/1	M. Nabuto
10	Alex Phiri	M	Sailota	49	076526706	200167/53/1	Alex
11	Alfred Sakala	M	Chimangeni	69	0765265706	200167/53/1	Alfred
12	Edward hingu	M	Gosite	60		185681/69/1	Edward
13	Alford Zulu	M	Sevies	57		226630/53/1	A. D. Zulu
14	Kachibo Sakala	M	Abuselo	46	0	767376/1/1	Kachibo
15	Jesinala mumba	F	Achilisa	23			Jesinala

GHOSITE ZONE

Ministry Of Green Economy and Environment

Zambia Integrated Forest Landscape project - Attendance Register

Title Meeting: Community Meeting Validation and Zoning Date 22/07/2022

S/N	Name	Gender	Village	Age	Phone #	NRC #	Signature
1	Adimale ph...	F	Aditica				
2							
3							
4							
5							
6							
7							
8							
9							
10							
11							
12							
13							
14							
15							

MOMW BWE ZONE

Ministry Of Green Economy and Environment

Zambia Integrated Forest Landscape project - Attendance Register

Title Meeting: COMMUNITY MEETING - VALIDATION & ZONING Date 22/07/2022

S/N	Name	Gender	Village	Age	Phone #	NRC #	Signature
1	Zabuloni Phiri	M	Nyetele	48	0979712610	-	Z. Phiri
2	Yuda mumba	M	Nyetele	51	-	-	Y. mumba
3	Gubatt Tembo	M	Nyetele	45	-	-	G. Tembo
4	DICKSON Lungu	M	Nyetele	42	0967003866	297061/581	D. Lungu
5	Dallesi Tembo	F	Nsanjambwe	-	-	-	D. T
6	PETER Tembo	M	WHITE	49	07656218015	281665/581	P. Tembo
7	SMARI DAKA	M	Chikhamwa	31	0957836027	-	S. DAKA
8	Cosben Daka	M	Chikhamwa	28	077075464	160088/571	C. DAKA
9	ANDWEL Lungu	M	mbiyoli	28	0970887823	135901/571	A. LUNGU
10	MANUV PHIRI	M	Zimbarabana	32	09626382	126661/571	M. PHIRI
11	BRAUN DAKA	M	Chikhamwa	23	0957831266	-	B. DAKA
12	Keshasi Tembo	M	Chimoko	27	0970641922	130926/571	K. Tembo
13	LUKAS PHIRI	M	MBYOLI	25	0978598421	117493/571	L. PHIRI
14	MYSAN C. Tembo	M	THAND	65	-	188824/531	M. C. Tembo
15	MILSON Lungu	M	NSINDIRO	42	0779742481	295722/581	M. Lungu

MOMBIWE ZONE

Ministry Of Green Economy and Environment

Zambia Integrated Forest Landscape project - Attendance Register

Title Meeting: Community Meeting - Validation and Zoning Date 22/07/2022

S/N	Name	Gender	Village	Age	Phone #	NRC #	Signature
1	Soft mumba	M	nyelebe	37	0950869181	339342150	Soft
2	Zolani Nyang'u	M	chinkoko	22	0953911628	-	Zolani
3	Mobas zulu	M	chinkoko	22			M. zulu
4	paul Banda	M	Dina	30	0978597582	1331711574	P. Banda
5	kozimen lungu	F	White	61			L. lungu
6	Violet Mwanza	F	Nsanjambwe	37			V. Mwanza
7	Nyanwe Phiri	F	Kupota	63			N. Phiri
8	Alaida Lungu	F	Dani				A. Lungu
9	Atlapenje Tembo	F	Dani				A. Tembo
10	Chilutye	F	White				C
11	Chiona Tembo	F	White				C. Tembo
12	Sara Zulu	F	Nsanjambwe	45		1236511571	Sara Tembo
13	Moss Doka	F	Nsanjambwe	28			M. Doka
14	Grace Phiri	F	Nyelele	47			G. Phiri
15	Fadalezi Phiri	F	Nyelele	39			F. Phiri

MOMBIWE ZONE

Ministry Of Green Economy and Environment

Zambia Integrated Forest Landscape project - Attendance Register

Title Meeting: Community Meeting - Validation and Zoning Date 22/07/2022

S/N	Name	Gender	Village	Age	Phone #	NRC #	Signature
1	Tembo Denson	M	THANDI	34	0770751011	1104961101	Tembo
2	SHINESTER PHIRI	F	DINA	14			S. Phiri
3	JOYCE NJOBVU	F	ZIBANI-BANA	46			J. Njobvu
4	MARY Lungu	F	DINA	19		162537571	M. Lungu
5	PHIRI KANGWA	F	DINA	30		129136571	K. Phiri
6	ELEINA MWANZA	F	ZIBANI-BANA	23			E. Mwanza
7	ROLINI TEMBO	F	DANI	7/6			R. Tembo
8	MUMBA MARY	F	ZIBANI-BANA	28	0957532448		M. Mumba
9	ROSTIA SAKALA	F	WHITE	36	0957799570		R. Sakala
10	MUMBA TASILA	F	"	40			T. Mumba
11	PHIRI MARY	F	YOTAMU	49	0957531534		M. Phiri
12	MWALE MOSES	M	DINA	58		256090111	M. Mwale
13	PHIRI FINDANI	M	ZIBANI-BANA	37		1004521571	F. Phiri
14	ASTACE TEMBO	M	DANI	48			S. K. Tembo
15	ALIFATE TEMBO	M	"	82			A. Tembo

MONIBWE ZONE

Ministry Of Green Economy and Environment

Zambia Integrated Forest Landscape project - Attendance Register

Title Meeting: COMMUNITY MEETING - VALIDATION RAO ZONE, Date 22/07/2022

S/N	Name	Gender	Village	Age	Phone #	NRC #	Signature
1	ACKLAS Zulu	m	DANI	54			A Zulu
2	ASTANE Zulu	m	"	84			A Zulu
3	NOBIT Zulu	m	ZIBANE-BANDA	56			N. Zulu
4	EVANCE TEMBO	m	"	71		245596/55/1	E. Tembo
5	Simon (Milemba)	M	DANI	32	0955001504	131345/56/1	[Signature]
6	MOSES TEMBO	M	DANI	37	0974398131	109047/7/1	[Signature]
7	ENOCK Mwanza	m	Zibane-Banda	40	096457648		E. Mwanza
8	ALFRED TEMBO	m	ZIBANE - Banda	42	0950557333	245907/53/1	[Signature]
9	Joseph Tembo	m	Dina Banda	22	0975434397		J. Tembo
10	ESAU Zulu	m	Kupota	25	077230503	138525/51/1	[Signature]
11	Kenneth Daka	m	White Chimwe	23	095582045		K. Daka
12	GENESIS MANKU	M	Chimusoko	23	0954171148	1446	[Signature]
13	LEVYSON TEMBO	M	DANI	24	0762923726	134247/51/1	[Signature]
14	JAMES PHIRI	m	ZIBANE-BANDA	44			[Signature]
15	GREYFORD Mwanza	m	MTIHWIWA	61	210512/53/1		G. Mwanza

MONIBWE ZONE

Ministry Of Green Economy and Environment

Zambia Integrated Forest Landscape project - Attendance Register

Title Meeting: COMMUNITY MEETING - VALIDATION & ZONE, Date 22/07/2022

S/N	Name	Gender	Village	Age	Phone #	NRC #	Signature
1	Goodson ngobuy	m	ZIBANE-banda	55	0954080935	405368/11/1	[Signature]
2	Joseph Mwanza	m	White	45		203566/51/1	[Signature]
3	ACHILISA PHIRI	m	THANDI	53		17627/55/1	A. Phiri
4	GREATSON SHALU	m	"	62	0978304836	182503/55/1	G. Shalu
5	MALITA TEMBO	F	DANI	23			M. Tembo
6							
7							
8							
9							
10							
11							
12							
13							
14							
15							

MOMWBWE ZONE

Ministry Of Green Economy and Environment

Zambia Integrated Forest Landscape project - Attendance Register

Title Meeting: Community Meeting - Validation of Zoning Date 22/07/2022

S/N	Name	Gender	Village	Age	Phone #	NRC #	Signature
1	Malita Tembo	F	Nyelele	35	—	—	M. Tembo
2	Grace Phiri	F	Kupota	52	—	—	Grace P
3	Moble Mwarra	F	Chimballo	25	095336128	—	M. Mwarra
4							
5							
6							
7							
8							
9							
10							
11							
12							
13							
14							
15							

MOMWBWE ZONE

Ministry Of Green Economy and Environment

Zambia Integrated Forest Landscape project - Attendance Register

Title Meeting: Community Meeting - Validation and Zoning Date 22/07/2022

S/N	Name	Gender	Village	Age	Phone #	NRC #	Signature
1	RUTH NJOMBVU	F	TOTEMU	33	—	—	R. Odjane
2	MASIT TEMBO	F	Nyelele	40	—	—	M. Tembo
3	KILISITHWA	F	DANI	29	—	—	K. Phiri
4	SISIRIYU PHIRI	F	DANI	33	—	—	S. Phiri
5	CHIONA Lungu	F	WHITE	40	—	—	C. Lungu
6	METI DAKA	F	SANIGAMBA	28	—	—	M. Daka
7	CHIRUBA DAKA	F	WHITE	40	—	—	C. Daka
8							
9							
10							
11							
12							
13							
14							
15							

MOMBWE ZONE

Ministry Of Green Economy and Environment

Zambia Integrated Forest Landscape project - Attendance Register

Title Meeting: COMMUNITY MEETING - VALIDATION AND ZONING Date 22/07/2022

S/N	Name	Gender	Village	Age	Phone #	NRC #	Signature
1	MUMBA MAMBO	M	DANI	50	0976330278	281734/54	Druba
2	TEMBO JACKSON	M	WHITE	38	0962637571	909957/11/1	Bo
3	ABINELI SAKALA	M	KUPOTA	48	0956128751	123298/54	APC
4	Lungu Paul	M	Zibanibana	67	—	88664/11/1	PL
5	Lufala mumba	M	Nyelele	48	—	618424/11/1	Lungu
6	Standwell Sakala	M	Kadi	62	097599232	182362/51	Standwell
7	Alola Banks	M	Dina	59	—	377555/1	Alola
8	Abraham Tembo	M	chinkhoma	24	0955928641	521318/10/1	Abraham
9	stere phiri	M	dina	59	—	227250/52/1	Ricci
10	KAPITA BRANDI	M	Zibanibana	40	095329732	247251/1	Brandi
11	ISAAC TEMBO	M	THANDA	38	0926065291	10435957/1	Isaac
12	GIRADISONI SAKALA	M	THANDA	27	0770267786	—	G. Sakala
13	Lwisani mumba	M	THANDI	29	—	—	L. mumba
14	TOM T. ZULU	M	NYELELE	35	096046826	—	Tom
15	ALLA DAKA	M	NYELELE	35	0953429656	123573/6/1	A. DAKA

Ministry Of Green Economy and Environment

Zambia Integrated Forest Landscape project - Attendance Register

Title Meeting: COMMUNITY MEETING - VALIDATION AND ZONING Date 22/07/2022

S/N	Name	Gender	Village	Age	Phone #	NRC #	Signature
1	malambe Phiri	M	White	29	0954757311	—	M. Phiri
2	AFURIKA TEMBO	M	DINA	27	0953363486	138322/59/1	Phiri
3	ELISA TEMBO	M	White	28	—	—	E. tembo
4	BEKSONI TEMBO	M	thandizani	35	—	—	Beksoni
5	JOSEPH TEMBO	M	DANI	40	—	8242	Joseph
6	AZELE Mwanza	M	DANI	30	—	—	Azele
7	JACKSONI Mwanza	M	DANI	30	—	—	J. Mwanza
8	AKIHA Zulu	M	DANI	24	0953158031	—	A. Zulu
9	ANDLIAT PHIRI	M	DINA	25	0970632024	140664	Andliat
10	JAZLOS TEMBO	M	TOTEMU	40	823415/1	823415/1	J. Tembo
11	MANDA Mwanza	M	TOTEMU	47	—	—	M. Mwanza
12	ZIMBA KILISIT	F	CHIBOKO	54	—	406071/1	Zimba-k
13	FATNES PHIRI	F	DANI	47	—	—	F. Phiri
14	BRILYA Mumba	F	CHIBOKO	49	—	—	S. mumba
15	JOSIMWI Mwanza	F	DANI	39	—	—	J. mwanza

MPETA ZONE

Ministry Of Green Economy and Environment

Zambia Integrated Forest Landscape project - Attendance Register

Title Meeting: Community Meeting - Validation and Zoning Date 21-07-2022

S/N	Name	Gender	Village	Age	Phone #	NRC #	Signature
1	DAVY C MALOWA	M	DANIEL	32	0970739209	123420/5/11	
2	YELESI MUMBA	F	DANIEL	52	-	-	
3	MIRIAM PHIRI	F	PUTH	57	150209/5/11	150209/5/11	m. phiri
4	BRACKSON PHIRI	M	SITIYA	64	-	-	B. Phiri
5	HALISON PHIRI	M	PUTH	45	0972678233 123699/5/11	123699/5/11	H. phiri
6	MUMBA LUNGU	M	SITIYA	43	6776819335	-	
7	SOWELANI PHIRI	M	SOWELANI	28	0779743361	-	
8	JOYCE TEMBO	F	SOWELANI	62	0961115945	183494/53/1	
9	ELECK SAKALA	M	MPETA	66	0957487724	249069/52/1	
10	PATRICK TEMBO	M	GERANI	55	-	-	
11	BEXIARD BANDA	M	DANIEL	45	-	-	B. Banda
12	Masauso Tembo	M	Ganzoni	54	0779759485	-	m. Tembo
13	AVELINA DAKA	F	PUTH	28	-	-	A. DAKA
14	JOYCE MUMBA	F	SITIYA	40	09774407341	267433/53/1	J. mumba
15	DAVID TEMBO	M	KAPHENODWE	39	0974192515	-	

Ministry Of Green Economy and Environment

Zambia Integrated Forest Landscape project - Attendance Register

Title Meeting: Community Meeting - Validation and Zoning Date 21-07-2022

S/N	Name	Gender	Village	Age	Phone #	NRC #	Signature
1	RACHEAL LUNGU	F	SARATIEL	31	0779729498	-	R.G.
2	DZUWA ZULU	M	MPETA	50/45	-	-	D. Zulu
3	AIRACK SAKALA	M	MPETA	53	0953366173	-	A. SAKALA
4	HEZRON PHIRI	M	MPETA	57 yrs	0974557503	230072/53/1	
5	PATRICK TEMBO	M	MPETA	60	0975513300	214487/53/1	P. Tembo
6	TEMBO JEREMIAH	M	HEMCHIRSO	53	0975577191	380587/52/1	
7	JAMIES TEMBO	M	MPETA	29	0979145084	123420/5/11	
8	Masauso Kintu	M	Mpeta	29	0977899800	138998/57/1	m. Kintu
9	Lyness Sakala	F	Mpeta	58	-	222328/53/1	L. Sakala
10	Edmore Clingens	M	Lyamba	34	0978571010	112127/57/1	
11							
12							
13							
14							
15							

Nyankalo

Ministry Of Green Economy and Environment

Zambia Integrated Forest Landscape project - Attendance Register

Title Meeting: Community Meeting - Validation and Zoning Date 22-07-2022

S/N	Name	Gender	Village	Age	Phone #	NRC #	Signature
1	ELIAS SIMBAYE	M	ZLA	39	0978711241	884622111	[Signature]
2	MBWE JONAS	M	ZONE 8B	26	0974356448	157615711	[Signature]
3	ISAAC Zulu	M	ZONE 8A	35	096382448	1009151521	[Signature]
4	Smart Simbaya	M	3	45	0975643952	285908	S. Simbaya
5	Silas P. Tembo	M	Zone 8B	50	0978810537	208541751	[Signature]
6	MUKHA STEPHEN	M	Zone (8B)	25	0966885722	1412191511	[Signature]
7	DICKSON SIMBAYE	M	Zone (7)	56	0976345859	1697901071	[Signature]
8	Thomson A. Gikuly	M	Zone 1	75	0976497437	214507521	[Signature]
9	PINKI SWEZANI	M	Zone 4	72	0964202232	1496901531	[Signature]
10	ROYD TEMBO	M	Zone 3	20	096457785	2814721531	R. Tembo
11	TEMBO R. A.	M	"	69	0965775026	1956691531	[Signature]
12	STAFF Mumba	M	Zone 4	65	0976552245	2217011531	S. Mumba
13	BANDWELL ZULU	M	Zone 3	46	0964288332	290055551	[Signature]
14	SAMSON A. MWANZA	M	Zone 4	28	0979383197	1046821531	[Signature]
15	Sydney NJORU	M	Zone 2	37	0978218414	8575931111	[Signature]

Ministry Of Green Economy and Environment

Zambia Integrated Forest Landscape project - Attendance Register

Title Meeting: Community Meeting - Validation and Zoning Date 22-07-2022

S/N	Name	Gender	Village	Age	Phone #	NRC #	Signature
1	AFRIKA Z. Achumba	M	CHIBWADIA	46	0979061515		A. Z. Achumba
2	FREDRICK E. CHISIZA	M	Chibwadia	48	097166376	7818831111	[Signature]
3	Elasha Zulu	M	Nyumba	53	0976150090	3681281511	[Signature]
4	PINKI BIZWELL	M	Zone 4	93	0965354156	1136681531	[Signature]
5	Zulu STEPHEN	M	Zone 8A	49	0950526917	2590921531	[Signature]
6	CHIKWEMAZI K. MOSES	M	NYANKALO SCAR	52	077585479	1732911461	[Signature]
7	SARAH K. MOSES	F	Zone 3	70		1473881531	A. SARAH K.
8	MURALE BENSON	M	Zone 6	53	0956041026	559288111	[Signature]
9	Zulu SPATLE	F	Zone 8A	44		2492861531	S. Zulu
10	NGOMA CHRISTINE	F	Zone 8A	62	0979876740	3528651111	[Signature]
11	Lemmy Zulu	M	Zone 6	44	0960977052	2882321531	[Signature]
12	NSANGU TEMBO	M	Zone H	27	077650852	1415586511	NSANGU TEMBO
13	PINKI ELIAS	M	CHIMANGU	40	0975677671	2898261531	E. PINKI
14	LUANGU DAVID	M	ACHILISH	46			D. LUANGU
15	MWANZA ZULU	F	Zone 3	40	0962844185	1183415711	Z. Mwanza

NyAIKALOKO

Ministry Of Green Economy and Environment

Zambia Integrated Forest Landscape project - Attendance Register

Title Meeting: Community Meeting - Validation and Toning Date 22-07-2022

S/N	Name	Gender	Village	Age	Phone #	NRC #	Signature
1	Tembo Betina	F	Zone 4	43	0973629090	258168/57/1	B. Tembo
2	Zulu Jotso	M	Zone 6	60		214833/52/1	J. Zulu
3	MABWATO SAKALA	M	Zone 8	26	097386989		M. Sakala
4	Edmund Chipanga	M	Chipanga	34	0975871010	112127/57/1	E. Chipanga
5							
6							
7							
8							
9							
10							
11							
12							
13							
14							
15							