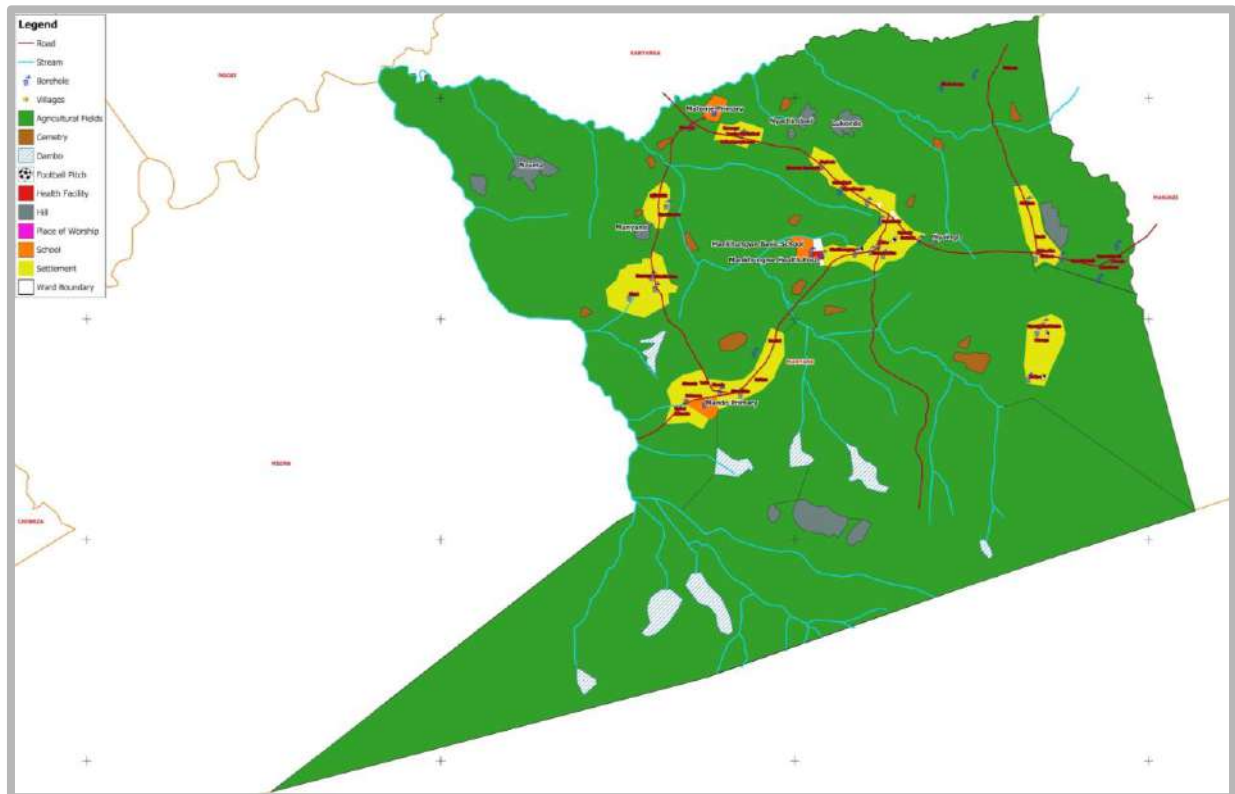


MANYANE WARD – PETAUKE DISTRICT PARTICIPATORY LAND USE PLAN (PLUP)



Prepared by: Land Alliance Consortium (TSP) in Collaboration with PETAUKE/LUSANGAZI DMT

Date: 25th August, 2022

Preface

This Participatory Land Use Plan (**PLUP**) for Manyane Ward is a document that has been developed with a view to managing and mitigating unsustainable natural resource use. The aim of this document is to help communities in making sound decisions pertaining to land uses. This PLUP process has been supported by the Zambia Integrated Forests and Landscape Project (**ZIFLP**), an initiative of the Government of the Republic of Zambia, with funding support from World Bank through the Bio-Carbon Fund, Global Environmental Facility (**GEF**) and International Development Association (**IDA**).

PLUP activity falls under Component 1: **Enabling Environment**. This first component is meant to create conditions that will allow the livelihood investments of Component 2 (**Livelihood and Low-Carbon Investments**) to be successfully implemented and that will prepare Zambia for emission reduction purchases. This component includes support for two sub-components under which PLUP falls. These are:

- a. District and Local Level Planning, which supports Integrated District Development.
- b. Local Planning, including land use and action planning through participatory processes.

The process for the creation of this PLUP was participatory in nature taking into account Social Biodiversity Impact Assessment (**SBIA**), and various stakeholders such as Her Royal Highness Chieftainess Mwanjawanthu of Mwanjawanthu Chiefdom, Petauke District Multi-Sectoral Teams (**DMTs**), Department of Physical Planning, Manyane Ward community Members and ZIFLP team were consulted and engaged and were fully involved at every stage of the process. Thus, this PLUP will help guide Manyane Ward residents in implementing sustainable and environmentally friendly land use practices in their ward, and also help in addressing the key issues identified, which have so far led to the unsustainable resource usage. This PLUP will help residents find alternative livelihood sources which will make them refrain from unsustainable land use practices such as unsustainable agriculture expansion, unplanned human settlement, environmental degradation and deforestation. This will help in the realisation of ZIFLP vision, which is to improve rural livelihoods in Eastern Province by reducing Deforestation and Forest Degradation using low emission pathways through local participation by 2030.

It is further hoped that the local people in the community will appreciate the benefits of having the Land Use Plan (**LUP**), bearing in mind that land is a scarce resource with competing uses which are mutually exclusive. Additionally, population growth, erosion, effects of climate change and other factors have contributed to the increasing scarcity of fertile land in rural areas despite people deriving their livelihoods from there. Thus, this PLUP is a way of balancing up competing and, in some cases, conflicting land uses.

Council Secretary
Petauke District Council

District
Commissioner
Petauke District

HRH Chieftainess Mwanjwanthu
Mwanjwanthu Chiefdom

Table of Contents

Preface	i
Table of Contents	iii
Table of Figures	vii
List of Tables	viii
Acknowledgements	ix
Acronyms and Abbreviations	x
1. Introduction	1
1.1 Background	2
1.3 Legal Context	3
2. Approach and Methodology	3
2.1 Stages of PLUP Activity	6
3. Characteristics of the Management Area	8
3.1 Location of Manyane Ward	8
3.2 Climatic Conditions	9
3.2.1 Temperature	9
3.2.2 Rainfall	10
3.2.3 Ecological Zone	10
3.2.4 Soil Types	11
3.3 Socio-Economic Environment	12
3.3.1 Population Projection	13
3.3.2 Social Facilities	13
3.3 Source of Livelihood	14
3.4 Livelihood Security	15

3.5 Livelihood and Natural Resource Utilisation	15
3.6 Livelihood Constraints and opportunities	16
3.7 Biodiversity Hotspots	17
3.7.1 Streams and Dams	17
3.7.2 Forests	18
3.8 Ecosystem Function	19
4. Current Land Use Patterns	20
4.1 Overall Land Use	20
4.2 Land Use Suitability Analysis	20
4.2.1 Soil Type Agricultural Suitability Analysis	21
4.3 Land Resource and Administrative Boundaries	22
4.4 Current Land Uses	22
4.5 Land Use and Agriculture	23
4.6 Land Use and Forest	24
4.7 Land Use and Wildlife	25
4.8 Land Use and Mining	26
4.9 Land Use and Tourism	26
4.10 Land Use and Physical Development	26
5. Community Participation	27
5.1 Community Engagement Process	27
5.2 Agreed Local Rules for Land Use and Resource Management	30
5.3 Problem Identification	30
6. Core Issues Affecting Land Use and the Environment	31
6.1 Lack of Water Sources	32

6.2 Soil Degradation	33
6.3 Poor State of Roads and Related Infrastructure	34
6.4 Long Distances to Schools	34
6.5 Inadequate Health Facilities	36
6.6 Inadequate Telecommunications Facilities	37
7. Land Use Planning-Zoning, Validation and Governance Rules	39
7.1 Mankhungwe Community Meeting	39
7.2 Sanjama Community Meeting	41
7.3 Chizanda Community Meeting	42
7.4 Matonje Community Meeting	45
8. Framework of the PLUP and Environmental Management Plan	47
9. Implementation Strategy	49
9.1 Capital Investment Projects	52
10. Institutional Arrangement for Plan Implementation	52
11. Conclusion	53
12. Glossary	54
12. 1. Natural Resources	54
12. 1.1. Vegetation	54
12. 1.2 Soils	54
12. 1.3 Water	54
12. 2. Climate	55
12. 2.1 Rainfall	55
12. 3. Land Use Planning	55
12. 4. Participatory Land Use Planning	56

12. 5. Livelihood	56
13. References	57
Annex 1: Manyane Ward By-Laws on Land Use and Natural Resource Management	59
Annex 2: Meeting Attendance Registers	61
First Village Meetings	61
Validation Meetings	77

Table of Figures

Figure 1: Location Map	8
Figure 2: Monthly Temperature Conditions for Manyane Ward	9
Figure 3: Annual Rainfall Pattern for Manyane Ward	10
Figure 4: Agro-Ecological Zones	11
Figure 5: Manyane Soil Map	12
Figure 6: Spatial Distribution of Social Facilities in Manyane Ward	14
Figure 7: Biodiversity Hotspots	19
Figure 8: Manyane Ward Agricultural Suitability Analysis Map	21
Figure 9: Land Resource and Administration Boundaries	22
Figure 10: Current Land Uses	23
Figure 11: Land Use and Agriculture Map	24
Figure 12: Land Use and Forest	25
Figure 13: Land Use and Physical Development	27
Figure 14: Sample output of rapid village assessment activity	29
Figure 15: Distribution of Water Sources	33
Figure 16: Primary Education Facility Service Gap	35
Figure 17: Secondary Education Facility Service Gap	36
Figure 18: Health Facility Service Radius	37
Figure 19: Future Land Use Map for Mankhungwe Community Meeting	41
Figure 20: Future Land Use Map for Sanjama Community Meeting	42
Figure 21: Future Land Use Map for Chizanda Community Meeting	44
Figure 22: Future Land Use Map for Matonje Community Meeting	46

List of Tables

Table 1: Stages of PLUP Activity	7
Table 2: Monthly Temperature Conditions for Manyane Ward	9
Table 3: Manyane Ward Population	13
Table 4: Livelihood Constraints and Opportunities	17
Table 5: Land Use Reservation	20
Table 6: Problems Identified	31
Table 7: Attendance Statistics	39
Table 8: Land Reservations for Mankhungwe Community Meeting	40
Table 9: Land Reservation for Sanjama Community Meeting	42
Table 10: Land Reservations for Chizanda Community Meeting	43
Table 11: Land Reservations for Matonje Community Meeting	45
Table 12: Environmental Management Plan	48
Table 13: PLUP Implementation Plan	51
Table 14: Capital Investment Projects	52
Table 15: Offences and Penalties	60

Acknowledgements

We the Consortium of Land Alliance comprising of Chipata District Land Alliance, Petauke District Land Alliance and Zambia Land Alliance Nyimba would like to express our gratitude to the Republic of Zambia for sourcing funding from the World Bank for the Zambia Integrated Forest Landscape Project (**ZIFLP**) through the Acting Project Manager Mr Noel Muchimba, Department of Physical Planning, Ministry of Local Government through the Petauke/Lusangazi District Multi-Sectoral Teams (**DMTs**), Her Royal Highness Chieftainess Mwanjawanthu, Manyane Ward Development Committee and the community of Manyane Ward.

Acronyms and Abbreviations

CDF – Constituency Development Fund
CSA – Climate Smart Agriculture
DMT - District Multi-Sectoral Team
ECZ – Electoral Commission of Zambia
EP - Eastern Province
EMP - Environmental Management Plans
FPIC - Free Prior Informed Consent
GPS - Global Positioning System
ICT – Information and Communications Technology
IDP – Integrated Development Plan
JICA - Japanese International Corporation Agency
JIDP – Joint Integrated Development Plan
LAP - Local Area Plan
LULC - Land Use Land Cover
LUP - Land Use Planning
NDP - National Development Plan
NRM - Natural Resource Management
OCC - Objection, Correction and Confirmation
ODK - Open Data Kit
PAD - Project Appraisal Document
PLUP - Participatory Land Use Planning
URP - Urban and Regional Planning
WDC - Ward Development Committee
ZIFLP - Zambia Integrated Forest Landscape Project

1. INTRODUCTION

Participatory Land Use Planning (**PLUP**) is an interactive process in which local communities can discuss and determine how to manage the land and other natural resources in their locality. Land Use Planning (**LUP**) can be defined as a process in which land is allocated for different uses ranging from residential, commercial, agriculture, etc. (PLUP manual, 2019). PLUP is an important decision-making tool for Natural Resource Management because it helps in defining suitable land uses which best balance ecological, economic and social objectives, thereby preventing land use and social conflicts. Thus, PLUP is of great importance if natural resources are to be effectively managed.

Rural areas in Zambia are currently faced with challenges ranging from food insecurity, land conflicts, biodiversity protection while initiating economic growth, adapting to climate change as well as protecting people from natural disasters (JICA, 2011). Hence, PLUP is envisioned to be a great tool capable of mitigating the above challenges by focusing on conducting discussions with relevant stakeholders on future land and resource use as well as management by allocating specific areas for different human activities.

Thus land use allocation is important, owing to the fact that land is a scarce resource with a fixed supply despite demand increasing on a daily basis (thereby bringing about land related conflicts). Therefore, this PLUP aims at guiding and helping in tackling land-related conflicts as well as other natural resource issues in their early stages by facilitating consensual negotiations and eventual regulations on land uses by all interested parties.

The rationale and overall objective of conducting Participatory Land Use Planning on customary land is to consolidate information on the current status of land uses and land information within an area. The information gathered will subsequently inform land use options that are sustainable, environmentally compatible, socially desirable and economically sound. Further, this exercise helps in bringing out social and environmental issues affecting the communities in the project areas so as to design appropriate interventions to mitigate those effects.

1.1 Background

The Zambia Integrated Forest Landscape Project (**ZIFLP**) embarked on supporting the implementation of Participatory Land Use Planning (**PLUP**) in districts of Eastern Province (**EP**), focusing on community land use mapping and planning. This was the basis for the identification of primary Sub-District level activities, including issues of identification, prioritisation and sub-project identification (PLUP Manual, 2019).

ZIFLP took into consideration and followed the present government direction on land use aimed at optimising the use of land, helping with resolution of conflicts which arise between competing land uses and needs of various interest groups, choosing sustainable options that best meet identified needs, rehabilitating and conserving natural resources, supporting the general development process and raising awareness concerning environmental problems among the populations and authorities (**ZIFLP-PAD**).

Additionally, this PLUP consolidated information on the current status of land use and land information within a project area, which provided information on land use options that are sustainable, socially and environmentally compatible, socially desirable and economically sound. The PLUP initiative is based on the current social, economic and environmental challenges and opportunities facing Zambia's customary areas.

Besides, Chiefs have a high level of autonomy in terms of land management in their chiefdoms, while at the same time depend on government for a range of services such as schools, clinics, etc. The PLUP development process recognizes the fact that Zambia's rural landscape is vast and viable for various investments. Thus, rural landscapes have the potential to provide multiple revenue sources ranging from small-scale farming, wildlife management and game ranching, forest timber extraction, tourism, and mining. It is important to note that there are a number of land uses competing with each other hence the need for a land use plan to serve as a guide for the use and management of land.

1.3 Legal Context

The Manyane Ward PLUP has been developed in accordance with the provisions of the Urban and Regional Planning (**URP**) Act No. 3 of 2015 of the Laws of Zambia. The URP Act is the main legislation that guides planning and related activities in the country. The Act not only provides for the preparation of Integrated Development Plans (**IDPs**) for the development of each district but also provides for the preparation of Local Area Plans (**LAPs**) which are actually Land Use Plans for sections of a settlement, sub-areas, sub-districts or wards within a Local Authority's area. Areas under Traditional Authorities are governed by Section 25 of the Urban and Regional Planning Act No. 3 of 2015 of the Laws of Zambia.

Further, it provides guidance on the development of areas within land falling under customary tenure with the provision of developing planning agreements between traditional authority and relevant government authorities. However, there are other laws and policies that govern Land Use Planning in Zambia which were adhered to during the preparation of Manyane Ward PLUP such as the Mines and Minerals Act No. 11 of 2015, Villages Act of 1972, Chiefs Act, Cap. 287, Agriculture Act, National Decentralisation Policy (**NDP**) of 2013, Forest Act No. 4 of 2015 and Zambia Wildlife Act No. 14 of 2015

2. APPROACH AND METHODOLOGY

The Participatory Land Use Planning in Manyane Ward adopted the USAID Land Use Planning approach, which is a combination of primary and secondary data collection. The secondary data collection method involved reviewing various documents on land use planning and land uses held by various government departments and other cooperating partners. The primary data was collected through village meetings and field activities, through the involvement of traditional leaders, community members and key informants across a range of government institutions and non-state actors. Facilitation of this PLUP was done in the local language in order to contextualise the PLUP to the locality. The whole process was participatory as it involved all stakeholders who were either affected or had interest in the landscape of the project site.

The participatory approach was used in the development of the Manyane Ward PLUP, where various relevant stakeholders were fully involved in the process. Planning was done with the community stakeholders together with their leaders (indunas and headpersons) in consultation with Chieftainess Mwanjawanthu. PLUP sensitization meetings were held with the Indunas, Headpersons, Manyane Ward Development Committee and community members in order to collect socio-economic and environmental data on livelihood sources and security. These PLUP sensitization meetings were held in **four (4)** clustered focus group village meetings, namely: **Mankhungwe, Sanjama, Chizanda and Matonje**. Community members in all the **four (4)** clustered meetings took a leading role in developing sketch maps, problem analysis through pair-wise ranking, identifying shared resources and validation of the maps.

The spatial and attribute data used were collected using mobile-based **Open Data Kit (ODK Collect)** application forms, Android tablets and **GLO Garmins** while **QGIS 3.8.1**, **Google Earth Engine** and **ArcGIS 10.5** were used for data analysis.

The data captured is uploaded to the cloud-based server using any wireless connectivity so that data can be uploaded anywhere without necessarily coming to the office, especially when the field teams are camping.

The tablets have stored MB tiles (orthophoto images) with base maps for each district and the Community Facilitators whilst in the field can map any village including all shared communal resources and using the ODK application they can gather data on number of attendees disaggregated as male and female of any village or ward. Any hand-drawn land use maps by the communities are captured and uploaded to the cloud server so that the GIS team at the office can digitise the maps and produce land use maps. Each tablet in order to accurately pick the polygon points is connected to a handheld Garmin Glo Geographical Positioning System (**GPS**). Each community facilitator ensures that the polygon points are repeatedly captured/deleted until the point recorded is shown to be reasonably in the right location relative to the ortho-photo image.

Although there is capability to manually record the polygon points against the image, or to move captured GPS points, the GIS team may not do so until they meet the community facilitator who was in the field to clarify any captured polygon points issues.

2.1 Stages of PLUP Activity

No.	Activity	Objective	Strategy	Output	Target	Indicator
1	Village Identification (Rapid Village Assessments)	Know the total number of villages in the ward by picking points of interest	Physical Data Collection in all villages	45 villages were identified	All Villages within Manyane Ward boundary	Villages falling within the Ward boundaries were captured
2	Sensitization of Indunas and Head Persons	Sensitise Indunas and Head Persons to fully accept PLUP	Indunas and Head Persons meeting	9 Indunas from Mwanjawanthu Chiefdom were sensitised.	All the Indunas in the Ward	Number of Indunas and Head Persons sensitised in the Chiefdom of Mwanjawanthu.
3	Community Sensitization	Sensitise communities on PLUP	Community meetings	One (1) Community Meeting for each of the 4 Village Clusters.	Community members in all the 4 Village Clusters	235 community representatives sensitised across the Ward, disaggregated as 91 men and 144 women
4	Shared Resource Mapping	Collect geographical locations of the resources present in the community	Physical Spatial data collection	17 Shared Resource Maps were produced	Manyane Ward	Shared Resource Mapping exercise completed in Manyane Ward
5	Manyane Ward Resource Map validation	Show the current shared resources, land uses and have the communities confirm the boundaries	Community engagement meetings for validation purposes.	Objections Corrections and Confirmation (OCC) done for the shared resource map in Manyane Ward.	Objections Corrections and Confirmation (OCC) done at the Palace and in all the village clusters	Shared Resource Map validated by the Chief and community

						representatives in the ward.
6	Future land use planning and Formulation of By-Laws	Develop maps of how communities envisage to sustainably use their natural resources.	Community meetings	Future Land Use Plan developed and By-Laws formulated	The whole Manyane Ward	Future Land Use Plan and By-Laws done
7	PLUP approval	Have the plan approved by all relevant authorities in order to be implemented	Submit PLUP copies to both traditional and local authorities	PLUP approved	Manyane Ward PLUP	PLUP approved by the Chief and Local Authority

Table 1: Stages of PLUP Activity

3. CHARACTERISTICS OF THE MANAGEMENT AREA

3.1 Location of Manyane Ward

Manyane Ward is in Petauke District, which has two (2) constituencies, namely: **Kaumbwe** and **Petauke Central**. **Kaumbwe Constituency**, where Manyane Ward falls, has **five (5)** wards, namely: **Kaumbwe, Lusinde, Manjazi, Manyane** and **Kanyanga**. Manyane Ward falls under Petauke District, which has a surface area of **3,701 km²**, and lies between **13°30'** latitude and **14°45'** longitude, **31° west** and **32° east**. Petauke District shares boundaries with Lusangazi in the north and with Sinda and Mambwe in the north-east, as well as Serenje in Central Province in the north-west. Manyane Ward shares boundaries with Kanyanga and Ngozi Wards in the North, Msima Ward in the West and Manjazi Ward in the East. The map below shows the location of Manyane Ward:

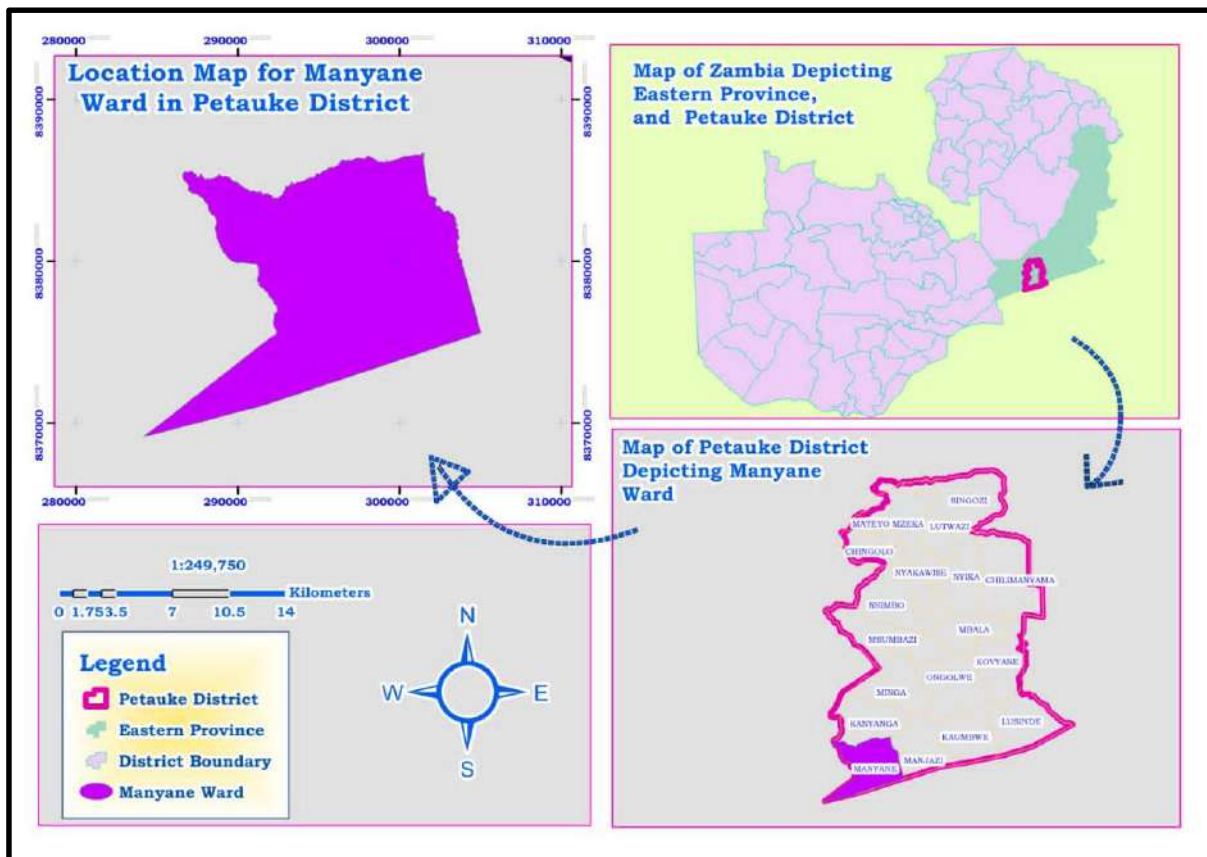


Figure 1: Manyane Ward Location Map

3.2 Climatic Conditions

Manyane Ward is characterised by a **Tropical Savanna** climate which is associated with the tropical wet and dry climate. The summers are much rainier than the winters in Manyane, with an average annual temperature of **23.4°C** and annual rainfall of **1,051 mm**.

3.2.1 Temperature

The temperatures are highest, on average, in October, at around **27.7°C** and lowest in July, with temperature recording of around **13.4°C**. Table 2 and figure 2 below show average temperatures for Manyane Ward:

	Jan	Feb	Mar	April	May	June	July	Aug	Sept	Oct	Nov	Dec
Ave. Temp (°C)	23.4	23.3	22.9	22.1	21.0	19.6	19.5	22.6	25.9	27.7	26.8	26.4
Min. Temp (°C)	19.2	18.8	18.1	16.8	15.2	13.6	13.4	15.8	18.7	20.9	20.9	20.1
Max. Temp (°C)	27.6	27.7	27.6	27.3	26.8	25.5	25.6	29.3	33.0	34.5	32.7	32.7

Table 2: Monthly Temperature Conditions for Manyane Ward

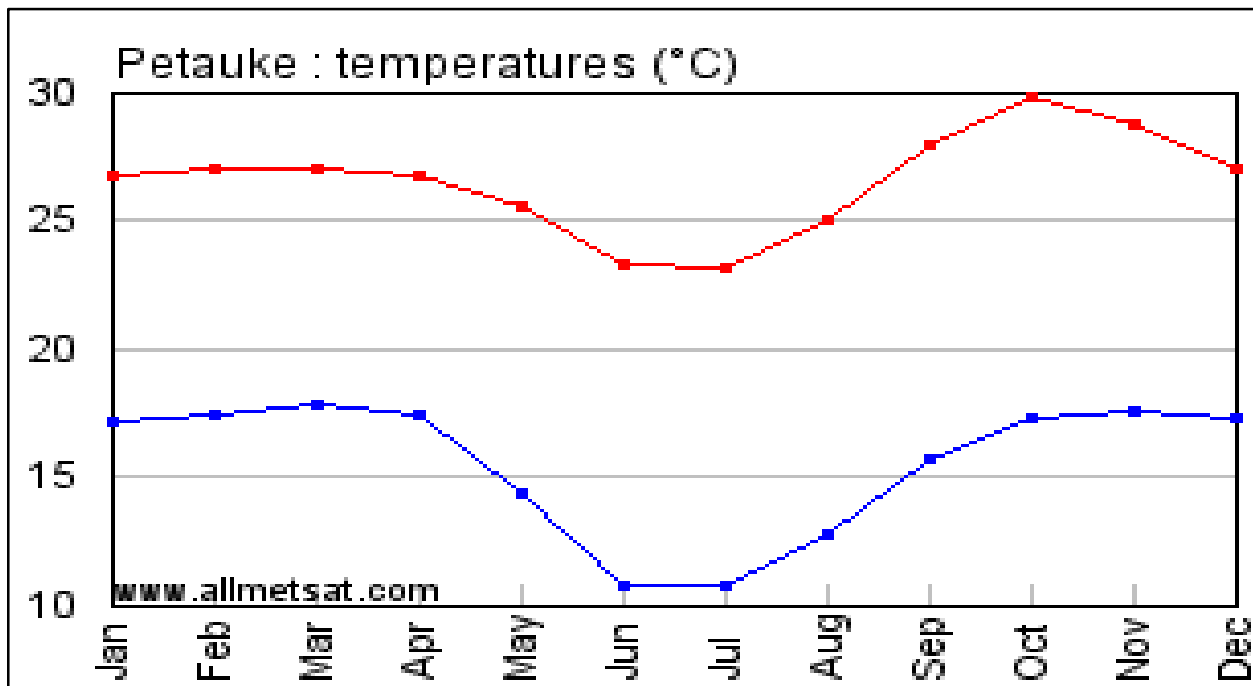


Figure 2: Monthly Temperature Conditions for Manyane Ward

3.2.2 Rainfall

Manyane Ward receives a total annual rainfall of about **1,051** mm. There is high rainfall recorded during the wet season from November to February with average rainfall of between **91-298** mm. The variation in the precipitation between the driest and wettest months is **150** mm. Figure 3 below shows rainfall patterns for Manyane Ward:

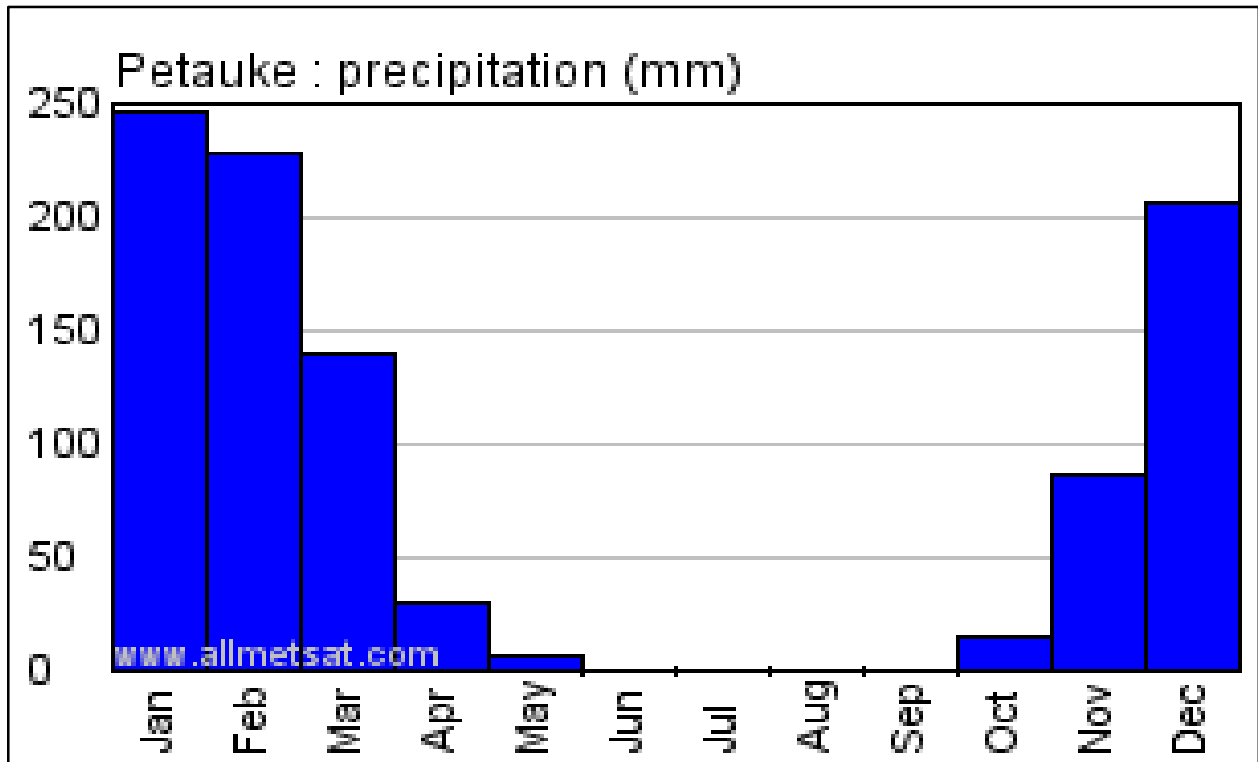


Figure 3: Annual Rainfall Pattern for Manyane Ward

3.2.3 Ecological Zone

Zambia, as a country, is divided into three main Ecological Zones, which are: **Zone I**, **Zone II** and **Zone III**. Petauke District is characterised by both the **I** and **Ila** Ecological Zones. Manyane Ward, being located in Petauke District, falls under the **Ila** Ecological Zone, which is characterised by annual rainfall of between **800-1000** mm, and a growing season of **100-140** days. This Ecological Zone supports the growth of medium and late-maturity crop varieties such as maize, soya beans, groundnuts and other leguminous plants. The figure below shows the different Ecological Zones of Zambia:

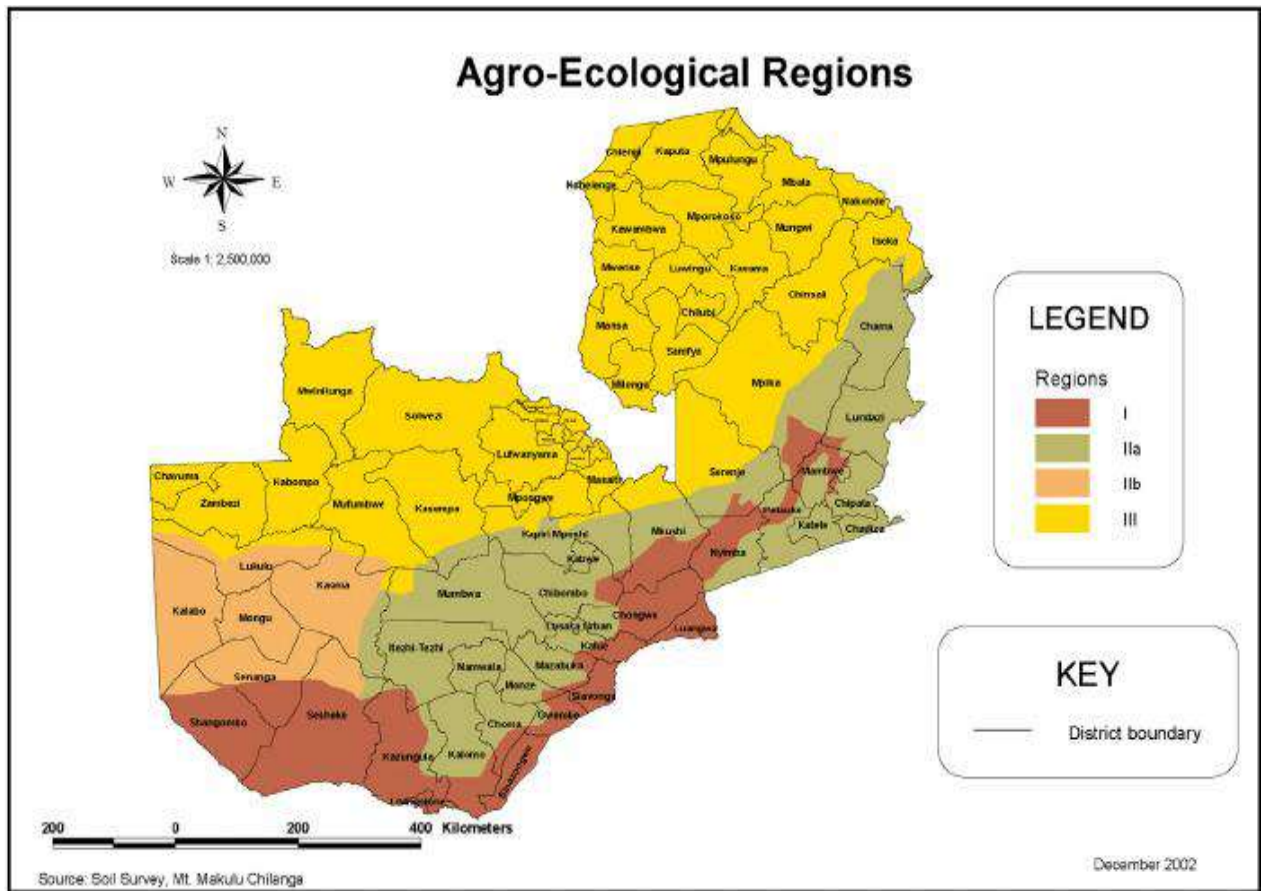


Figure 4: Agro-Ecological Zones

3.2.4 Soil Types

Petauke District is covered by **3** soil zones, namely: **Acrisol**, **Luvisol** and **Lithosol** Soil Zones. Manyane Ward is covered by one Soil Zone, i.e. **Acrisol** Soil Zone. The figure below shows a map of Manyane Soil Type Cover:

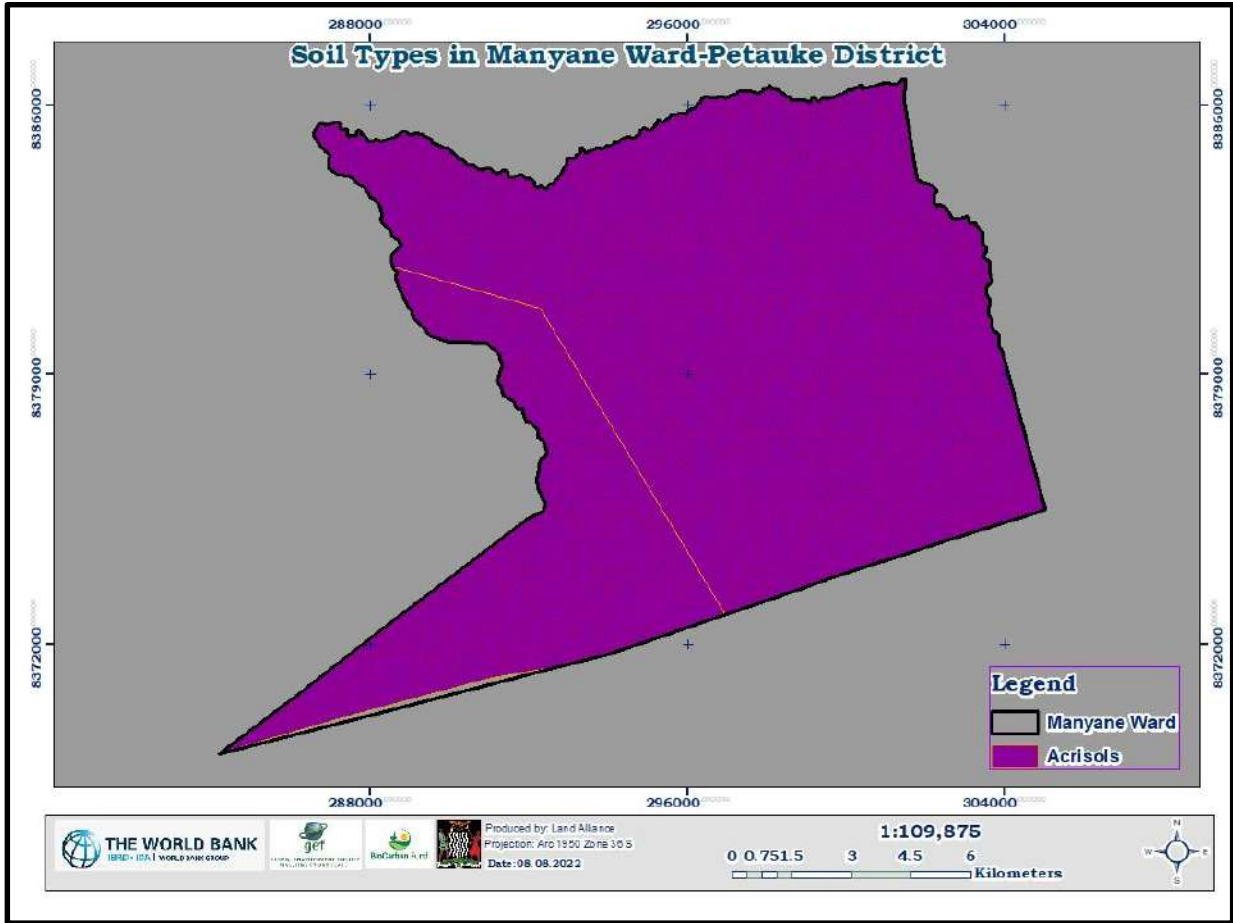


Figure 5: Manyane Soil Map

3.3 Socio-Economic Environment

Manyane Ward covers a total area of **18,120.1** hectares. Settlements in the ward are dispersed with poor road networks, especially during the rainy season, as the areas become inaccessible because streams flood and there are no bridges/culverts (Petauke/Lusangazi JIDP, 2021). Based on the village geo points collected, the ward has a total of **45** villages and based on the 2017 Census of Population, Manyane Ward has an estimated total population of **18,983** (CSO, 2017) as shown in the table below:

POPULATION			
MANYANE	Male	Female	Total
	9,340	9,643	18,983
Source: Petauke/Lusangazi JIDP, 2021			

Table 3: Manyane Ward Population

3.3.1 Population Projection

For the purposes of projecting future services and land use needs, the population forecast was based on the national population projections (adjusted to reflect the population of Kasenengwa District at **2.8%** growth rate as per 2017 Zambia Census projection). On this basis, the population of Manyane Ward is projected to increase to **21,200** and **27,182** in 2021 and 2030 respectively (Petauke/Lusangazi JIDP, 2021).

This projected increase in population will not only require land for development of infrastructure and other services but will also increase pressure on ecologically sensitive areas such as forests and hills that serve as catchment areas as well as water recharge areas. This entails that more land will be opened up for agricultural purposes, which will potentially lead to forest degradation and loss of biodiversity, consequently contributing to severe climate change and its related effects. However, the impact of anticipated increase in agricultural activities on land can be managed through the promotion and adoption of Climate Smart Agriculture (**CSA**) practices, aimed at reducing agriculture land expansion while increasing crop yields.

3.3.2 Social Facilities

Manyane Ward currently has **six (6)** schools classified as follows:

- **Five (5)** primary schools, namely: **Mankungwe, Mando, Sanjama** and **Matonje**
- **One (1)** Community school, namely: **Pilimbira Community School**
- **One (1)** Secondary School, namely: **Ng'ombe Nimatole (Matonge) Day Secondary School.**

There are **two (2)** health facilities in Manyane Ward (**Mankhungwe Health Post** and another unnamed Health Post).

Manyane also has the following facilities: 34 boreholes, 37 football fields, 29 places of worship and 17 graveyards.

The map below shows the spatial distribution of social facilities in Manyane Ward:

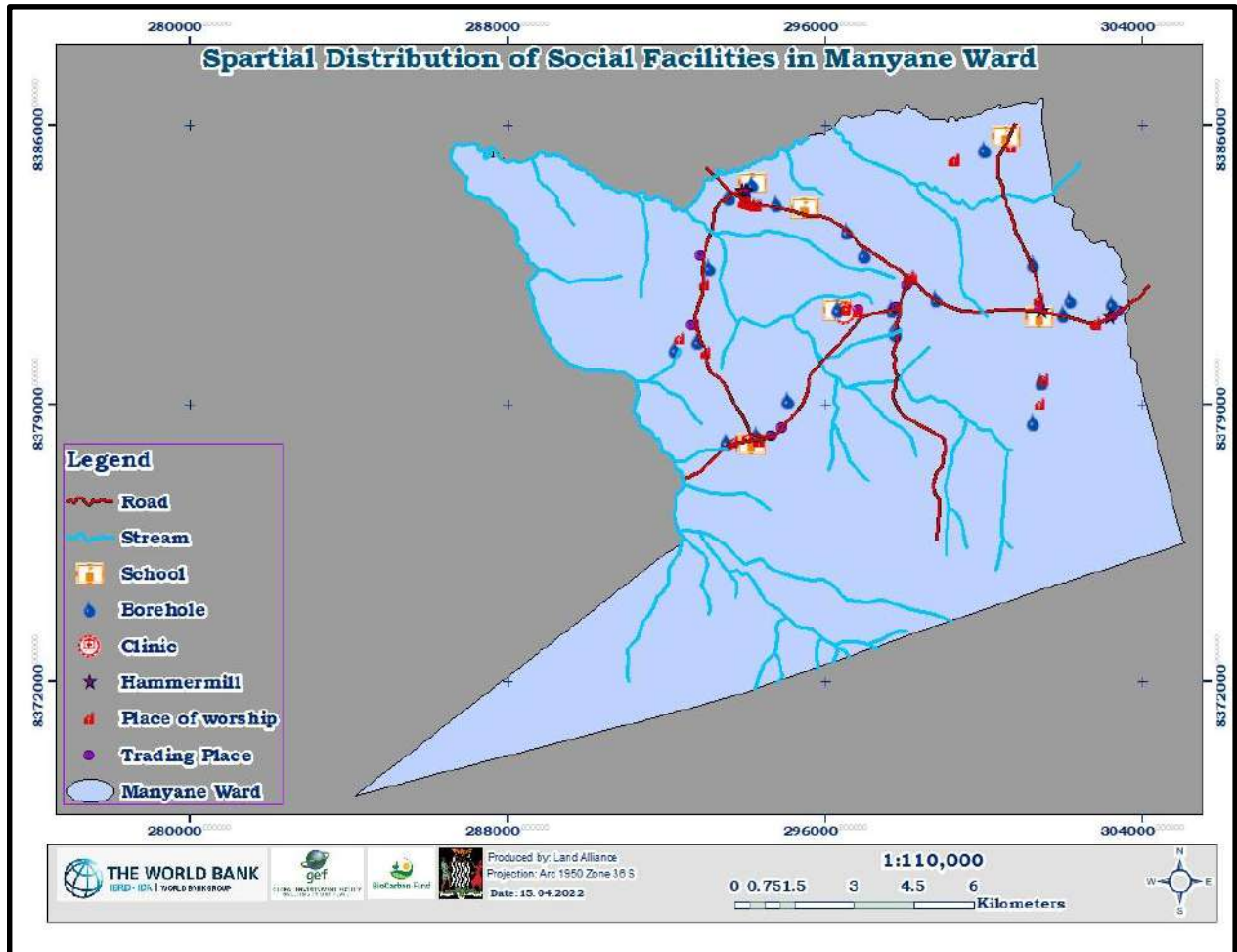


Figure 6: Spatial Distribution of Social Facilities in Manyane Ward

3.3 Source of Livelihood

Livestock keeping and subsistence farming are the predominant livelihood activities in Manyane Ward, with soya beans, maize, sweet potatoes, sun flower, tobacco, cotton and groundnuts being the main crops grown. Animals reared by the local residents of Manyane Ward include cattle, pigs, goats, sheep, chickens, and ducks. The products are either sold to the Food Reserve Agency

(FRA) or in urban centres of Petauke. The communities in Manyane Ward also survive on non-wood products such as fruits, caterpillars, mushrooms and honey among others.

3.4 Livelihood Security

Livelihood security is the secure adequate access to resources as well as income generating activities to meet basic needs and it is shaped by the changing natural environment (Kassa, 2018). Securing the livelihoods of Manyane Ward residents is closely associated with the limited development of economic opportunities in the area because most, if not all, residents depend on undiversified sources of livelihood based on rain-fed agriculture.

Livelihood security is often influenced by possibilities to diversify livelihood sources. If there are diversified livelihood sources, chances of attaining livelihood security are high. However, the over-dependence on agriculture as a livelihood source has contributed to soil degradation as the only option available is to open up new fields by cutting down trees, leading to deforestation, which has a negative effect on the climate. On the other hand, climate change affects rainfall patterns which further affect agricultural productivity thereby endangering the livelihoods of the local people of Manyane Ward.

3.5 Livelihood and Natural Resource Utilisation

Sustainable Livelihood refers to a livelihood that can cope with and recover from stresses and shocks, maintain or enhance its capabilities and assets both now and in the future, while not undermining the natural resource base (Ayantoye et al, 2017). The over-dependence of Manyane Ward residents on agriculture has led to increased pressure on the natural resources, especially land being the means to production for agricultural-based sources of livelihood. This unsustainable natural resource utilisation for survival, such as cutting down trees for field expansion leaves the farmlands bare, thereby resulting in soil degradation, which, in return, affects productivity.

Farming practices adopted by the locals contribute to soil degradation, forcing them to abandon old fields and open up new ones with a view to increasing yields. Thus, adopting conservation

farming is encouraged so that one field can be used over and over without affecting the yields. This, in turn, will reduce the rate at which new agricultural fields are being opened up, thereby conserving trees and forests.

Increase in population has equally contributed to unsustainable natural resource usage in that community members clear land for purposes of settlements and agriculture because their livelihood is entirely dependent upon farming. Thus, they either clear land for field expansions or to open up new fields. Additionally, although Manyane Ward is connected to the national electricity grid, most locals cannot afford to access electricity for use in their homes. As such, local communities heavily depend on wood fuel for their energy use. Thus, the high demand for firewood contributes to the rampant cutting down of trees.

Trees (forest) serve as natural habitats for various wild animals, birds and insects which get affected when their habitat is cleared. These animals, birds, and bees have the capability to serve as alternative livelihood sources through careful management. For example, the locals can venture into beekeeping as a business. However, the clearing of trees has led to the disappearance of biodiversity in the area.

3.6 Livelihood Constraints and opportunities

Agriculture is the major livelihood activity in Manyane Ward but due to climate change the area has been experiencing late onset of rains, occasional dry spells and floods, which have affected yields, thereby affecting the livelihood of people. However, there are opportunities of improving the yields through practising climate smart agriculture which ZIFLP, through the Ministry of Agriculture, has been implementing in the ward. Additionally, communities can be encouraged to form cooperatives or groups which various stakeholders can support to venture into environmentally-friendly value addition projects to process raw products and sell them as finished products. In order to minimise the livelihood constraints in the ward, sustainable investment in agro-industries to enhance value addition and the establishment of market infrastructures are of great importance. These can, in turn, improve food security and aid in

poverty reduction through exploration of alternative sources of livelihood. The table below summarises the constraints and opportunities in Manyane Ward:

Constraints	Opportunities
<ul style="list-style-type: none"> ● Low agricultural yields due to poor farming practices ● Lack of initial startup capital ● Lack of alternative livelihood sources ● Poor road network to access some villages ● Lack of electricity 	<ul style="list-style-type: none"> ● Switching to climate smart agriculture ● Venturing into value-addition activities ● Establishment of market infrastructure ● Construction of roads ● Investment in green energy e.g. solar

Table 4: Livelihood Constraints and Opportunities

3.7 Biodiversity Hotspots

The sustainable use and protection of biodiversity is an integral component of successful Land Use Planning. There is a need to identify the existing biodiversity together with the local population. Any conflicts of interest must be brought out and resolved leading to greater social acceptance. LUP is one of the tools utilised in biodiversity protection as it helps in identifying existing biodiversity and also creates a broad consensus on the sustainable use of natural resources leading to the conservation of biodiversity. Manyane Ward has various biodiversity hotspots and the following hotspots were identified during the PLUP preparation process:

3.7.1 Streams

Manyane Ward has several streams and no dam. These water bodies, which are biodiversity hotspots, can be protected by the enforcement of by-laws which restrict bad farming methods and also encourage adherence to the 50m buffer zone rule around water bodies as stipulated in the Environmental Management Act.

3.7.2 Forests

Manyane Ward has **one (1) National Forest (Luwenga)**, and small parts of **Musima National Forest** (Msima Ward) and **Pamadzi National Forest** (Manjazi Ward) also fall inside the Ward. Manyane Ward also has more than **5 hills** and no woodlots. These hills and forests are biodiversity hotspots which need protection and conservation. This is especially needed for Luwenga National Forest, which has been completely encroached into by local residents opening up agricultural fields. The entire land that was under Luwenga National Forest is currently being used for agriculture by the local residents.

Forests and hills are frequently affected by bushfires either as a result of mouse hunting or clearing of fields. Restriction of burning of fields to months between August and October and having by-laws that prohibit bushfires and expansion of fields and settlements can help protect forests and hills in Manyane Ward.

The map below shows the biodiversity hotspots in Manyane Ward that were identified during the PLUP preparation process:

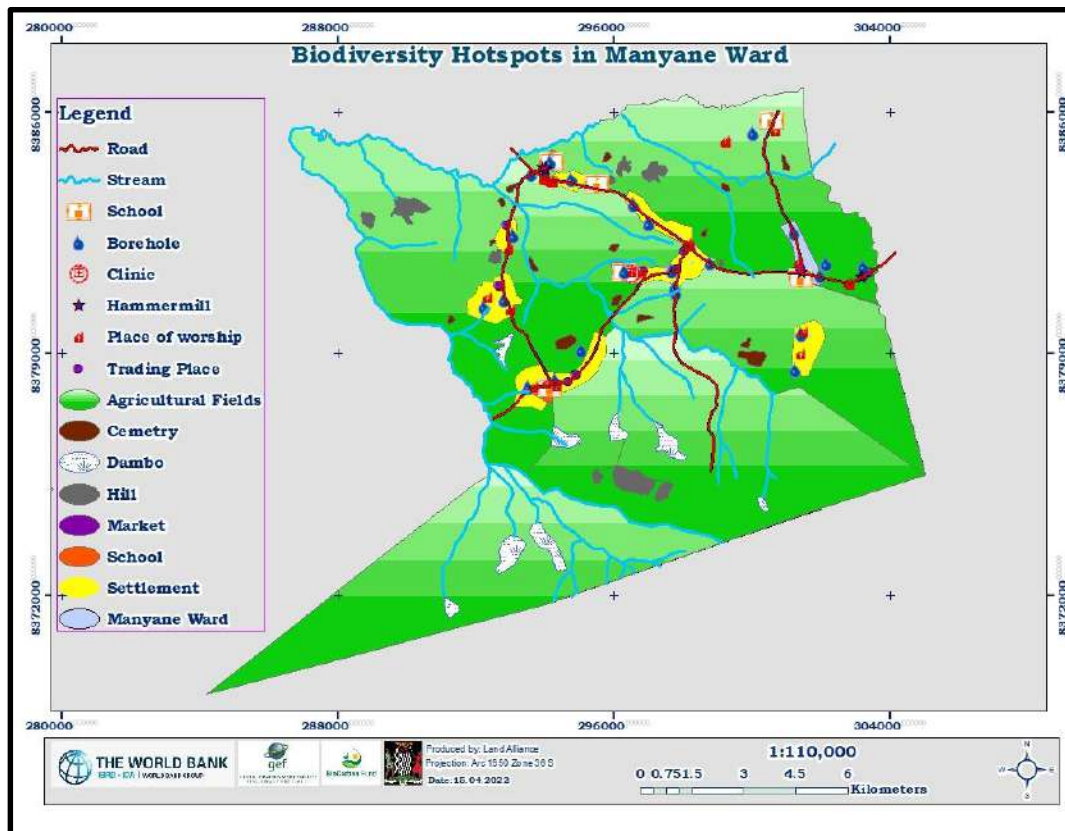


Figure 7: Biodiversity Hotspots

3.8 Ecosystem Function

Ecosystem function is the capacity of natural processes and components to provide goods and services that satisfy human needs, either directly or indirectly (de Groot et al 2002). Although unsustainable agricultural practices and charcoal production in Manyane Ward are the main factors transforming the natural resource base (which in turn affects the biodiversity due to habitat loss), unplanned settlements and soil degradation have also led to disturbance of the ecosystem. Further, poor livestock grazing area management has continued to cause a decline in the ecosystem. Seeing as how there are encroachments into the Forests in Manyane Ward, it is hoped that this PLUP will be instrumental in influencing forest conservation, ecosystem restoration and conservation of biodiversity.

4. CURRENT LAND USE PATTERNS

4.1 Overall Land Use

Manyane Ward has 1 National Forest and small parts of other National Forests that fall inside neighbouring Wards and more than 5 hills. The main land uses are as shown in table 5 below where agriculture is the leading land use, followed by forests, dambos, settlements, then hills. However, it is worth noting that some shared resources overlap the ward boundaries, meaning that communities share these resources. Shared resources need to be considered in relation to existing key stakeholders who live adjacent to them. The table below shows the different land uses, the area sizes and the percentages of the whole ward:

No.	Land Use	Hectares	% Coverage	Comment
1.	Total Ward Area (ha)	18,120.1		This is the total area of Manyane Ward.
2.	Agriculture	10,623.2	58.63%	This is land under cultivation. 883.4 ha (8.3%) of this falls under National Forest Land.
3.	Forest	1,121.7	6.19%	All land mapped as forest. 883.4 ha (78.8%) of this land has been encroached into by the local residents and is being used as agricultural land.
4.	Settlements	693.3	3.83 %	These include villages and other built up areas such as Schools, Health Facilities, Cemetery, Football Pitches, Markets, etc.
5.	Hills	116.4	0.64%	Hills not designated as forests but also not used for human settlements or agriculture
6.	Dambos	87.9	0.50%	Dambo areas reserved for animal grazing

Table 5: Land Use Reservation

4.2 Land Use Suitability Analysis

This is an analysis that was done to identify the suitability of Manyane Ward for agriculture as a land use. The analysis focused on agriculture as a whole and not necessarily evaluating the individual crops grown in the Ward and it was based on the soil types found in Manyane.

4.2.1 Soil Type Agricultural Suitability Analysis

There are 3 Soil Zones within Petauke District, namely: **Acrisols**, **Luvisols** and **Lithosols**. Manyane Ward is covered by **Acrisols** (Loamy soils). The Acrisol Soil Zone is characterised by rich clay subsoil mostly associated with humid tropic climate and often supports forested areas. Acrisols are easy to till but are characterised by low fertility, low water holding capacity and more toxic amounts of aluminium, which make them unsuitable for agriculture (Peter Schad, 2006). Agricultural activities in Manyane Ward are done in these Acrisols (Loamy soils). Figure 9 below shows areas of agriculture and the soil type cover in Manyane Ward:

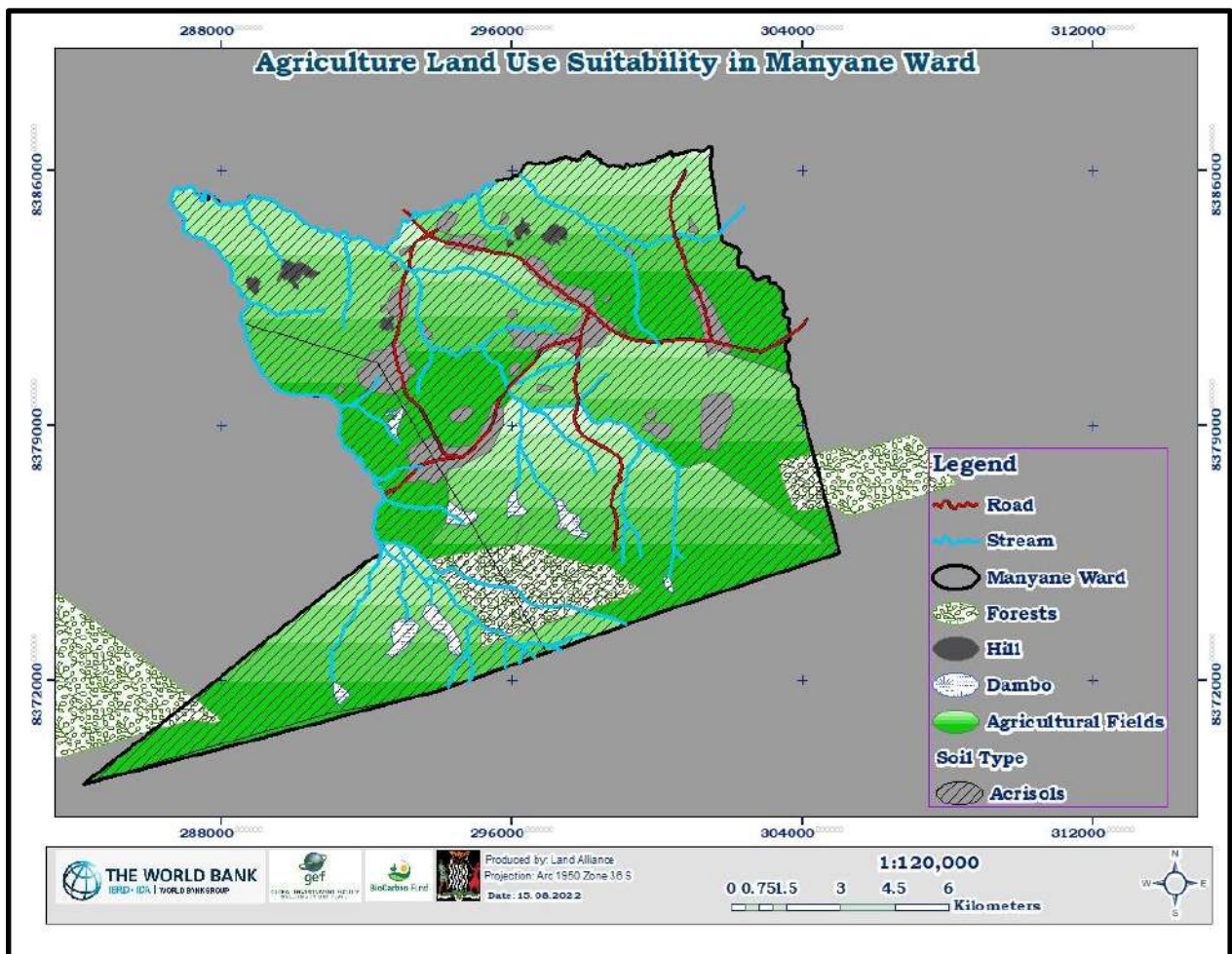


Figure 8: Manyane Ward Agricultural Suitability Analysis Map

4.3 Land Resource and Administrative Boundaries

The land resources captured during the PLUP process are under Manyane Ward and may spill over into other surrounding wards (such as Manjanzi and Kanyanga). However, despite the overlapping of these shared resources between wards local people in areas around Manyane acquire their services from Manyane Ward. The map below shows the land resources in Manyane:

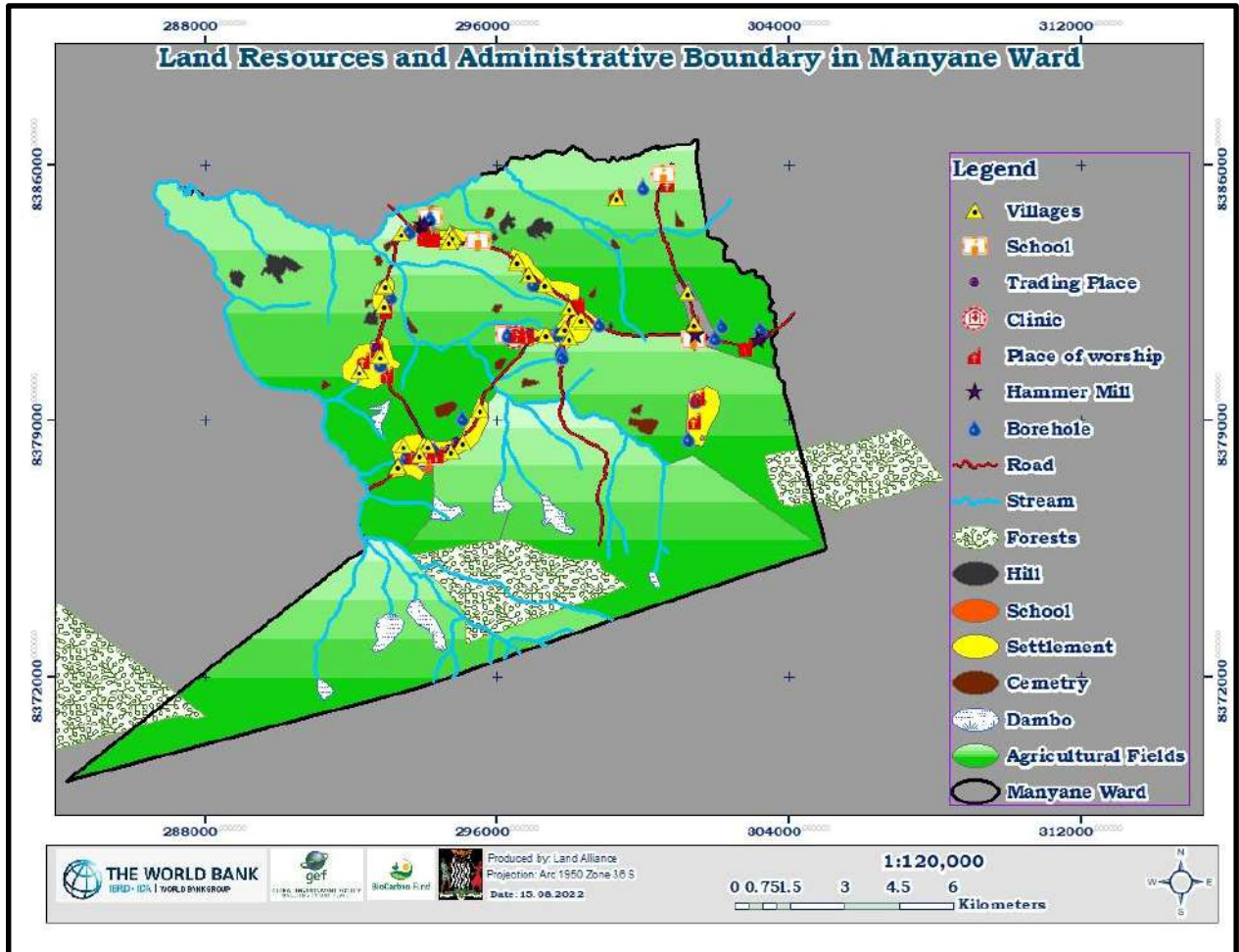


Figure 9: Land Resource and Administration Boundaries

4.4 Current Land Uses

In terms of land uses, Manyane Ward is mainly covered with agricultural fields, forests (**Luwenga National Forest** and small parts of **Pamadzi National Forest** - Manjazi Ward, and **Musima**

National Forest - Msima Ward), settlements, hills, dambos, as well as areas for social services such as schools, places of worship and other communal services like cemeteries, roads and streams. The map below shows the current land uses in Manyane Ward:

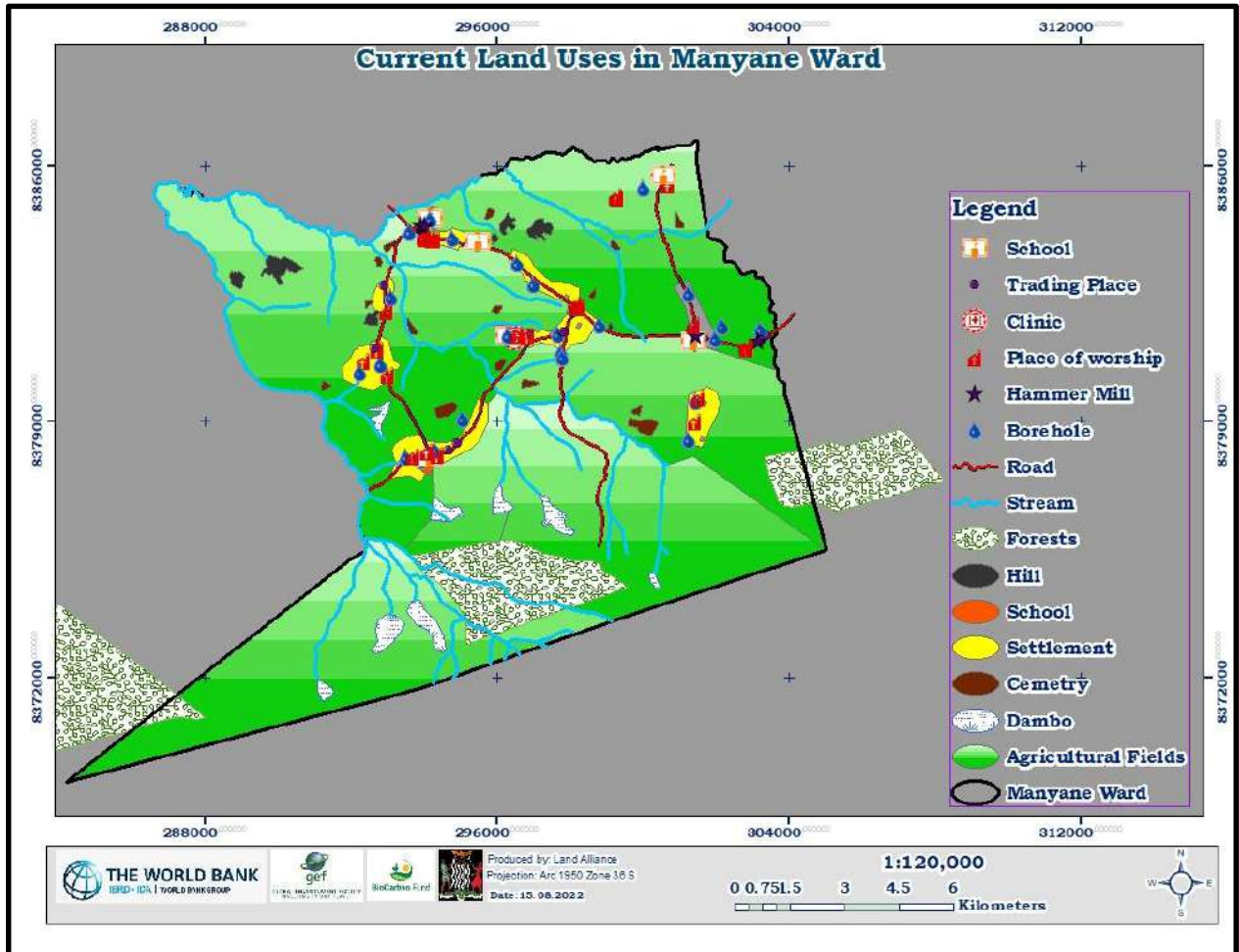


Figure 10: Current Land Uses

4.5 Land Use and Agriculture

Agriculture is the most common land use in Manyane Ward. Most of this land is under Climate Smart Agriculture supported by the Government. The map below shows areas of Manyane that are used for agriculture:

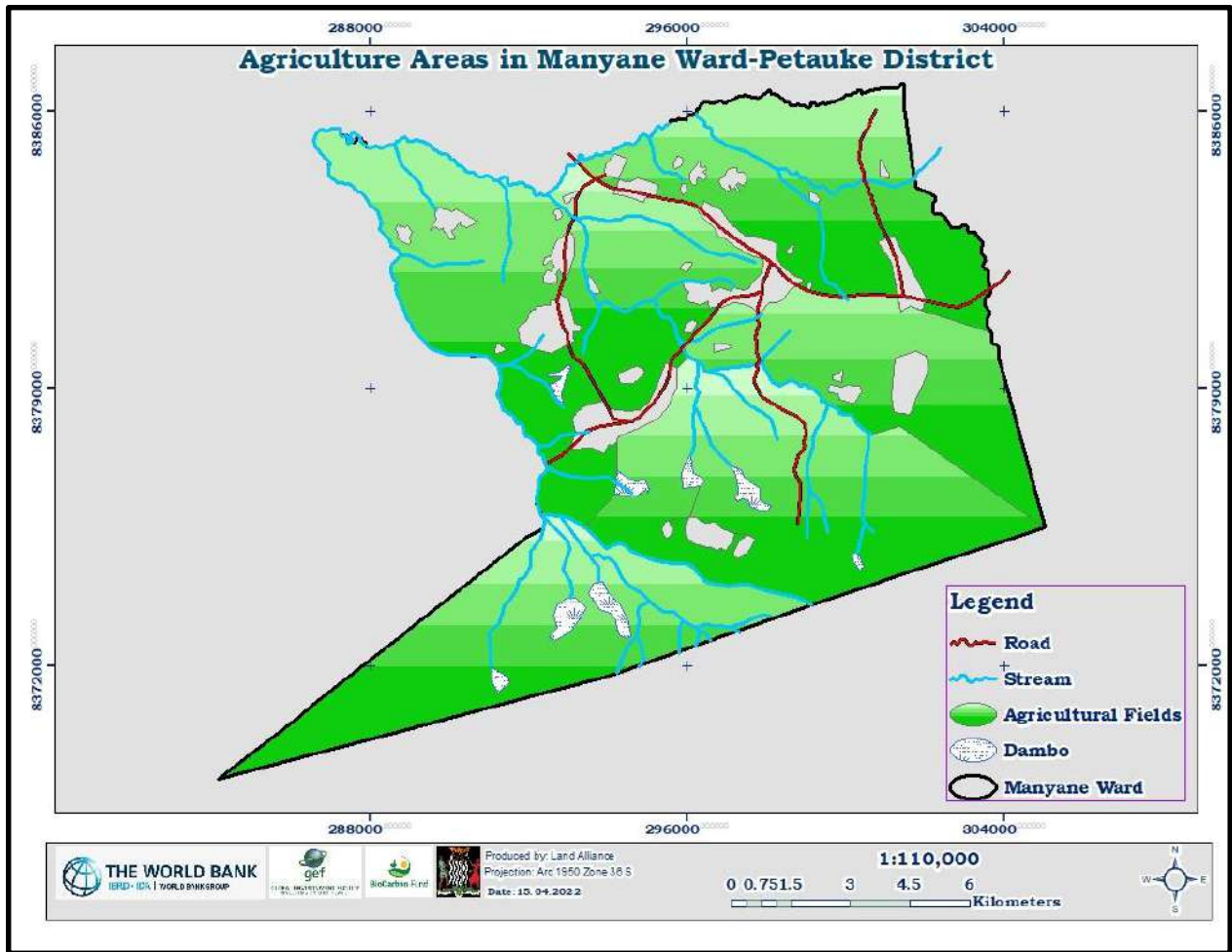


Figure 11: Land Use and Agriculture Map

4.6 Land Use and Forest

The purpose of protecting forests is to provide for conservation and development of forest with a view to securing supplies of timber and other forest produce, protection against floods, erosion and desiccation, withering and maintaining the flow of rivers. There is one (1) national forest in Manyane Ward (**Luwenga National Forest - 883.4 ha**), part of **Pamadzi National Forest - 151.1 ha** and part of **Musima National Forest - 82.2 ha**. Luwenga National Forest has been completely encroached into by local residents conducting agricultural activities. The hills are where they get firewood, mushrooms and vinkubala (mopani worms).

In as much as areas for conservation can be set aside by the community, there is need for awareness on the effects of indiscriminate cutting down of trees along the water bodies where

there is riverine vegetation. This will mitigate erosion and siltation in order to enable the water bodies in the area to restore and hold water for a long period even during the drier seasons. The trees along the river banks will also be conserved in order to prevent streams from drying up early and this will result in the rise of the water table. The map below shows the forest areas and hills of Manyane Ward:

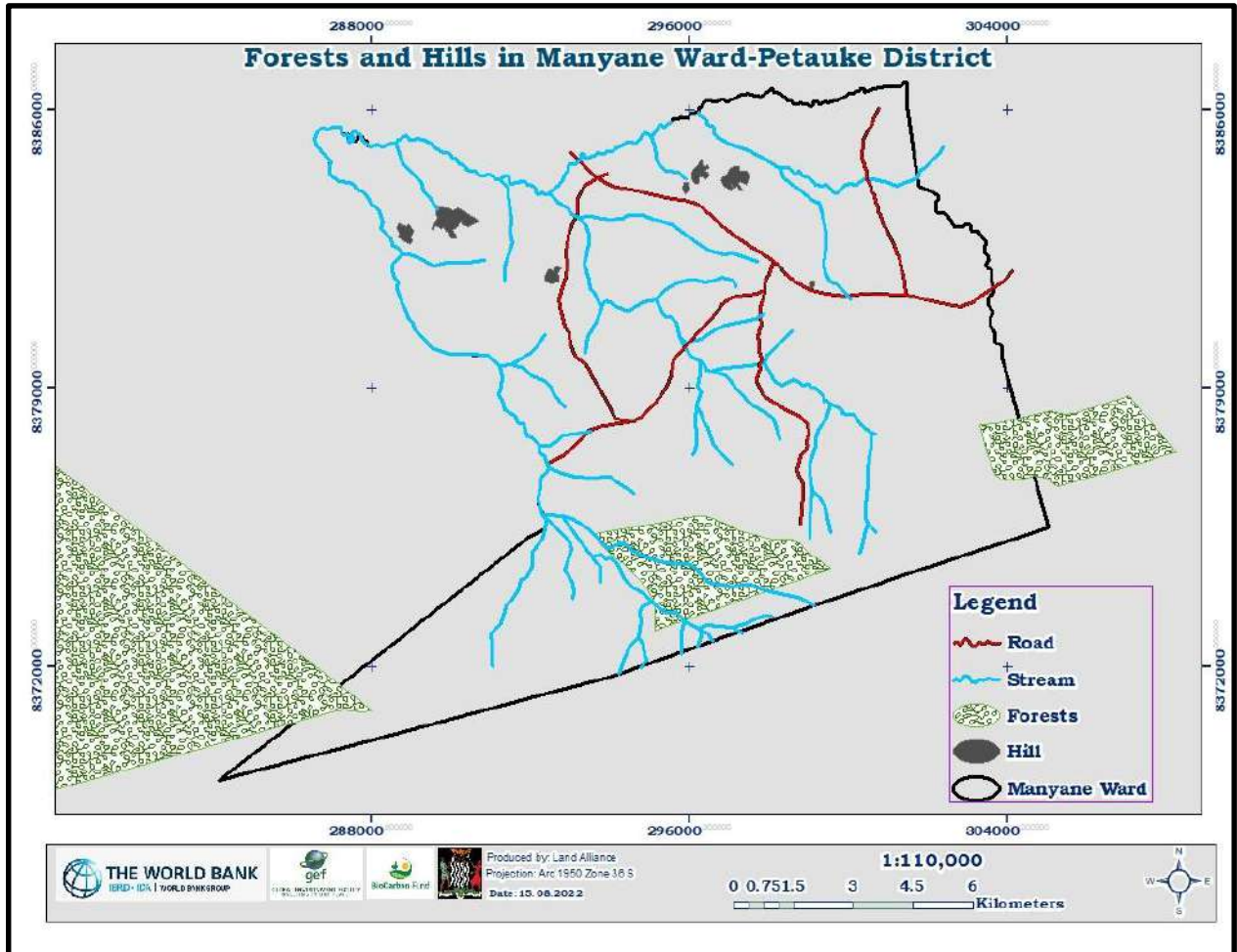


Figure 12: Land Use and Forest

4.7 Land Use and Wildlife

One of the objectives of PLUP in Manyane Ward is to create an enabling environment for conservation and development of wildlife with a view to increasing economic activities leading to improved livelihood in the area. Historically, there were a lot of animal sightings and presences of wildlife in Manyane Ward, this was attributed to an enabling vegetation cover, lower human

population, smaller agricultural fields and respect for nature by the local people through traditional authority.

One way to restore wildlife (small animals) in the area, especially in the forests, is by enhancing forest conservation, engaging in sustainable agricultural practices, enhancing conservation meetings on coexistence with wildlife, enhancing mitigation measures on human-wildlife conflict, and introducing exchange programs.

4.8 Land Use and Mining

There are currently no mining activities taking place in Manyane Ward.

4.9 Land Use and Tourism

There are currently no tourist attraction sites or activities in Manyane Ward.

4.10 Land Use and Physical Development

Manyane Ward is characterised by various physical developments ranging from schools, churches, settlements, and markets. Changes in land use for creation of new settlements or expansion of existing ones is an area of concern in Manyane Ward because land used for settlements usually becomes a permanent feature, never to revert to the original (environmentally friendly) land use. This has also been evidenced by the mushrooming of unplanned settlements within protected areas.

The Ward has **six (6)** schools, 5 of which are primary schools, namely: **Mankungwe, Mando, Sanjama and Matonje Primary Schools** and **Pilimbira Community School**, and one is a secondary school, namely: **Ng'ombe Nimatole (Matonge) Day Secondary School**.

There are **two (2)** health facilities in Manyane Ward (**Mankhungwe Health Post** and another unnamed Health Post).

The map below shows the physical developments of Manyane Ward:

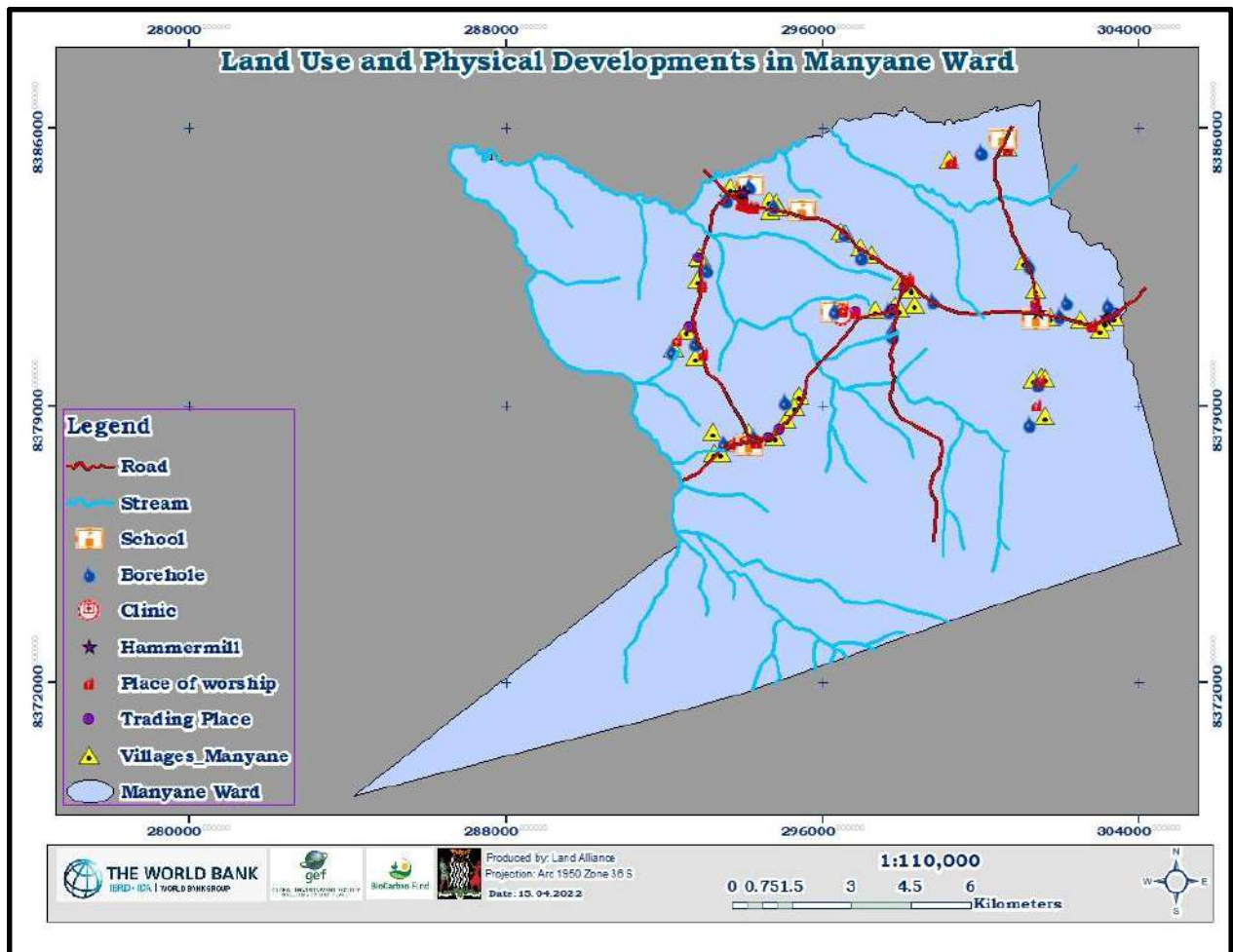


Figure 13: Land Use and Physical Development

5. COMMUNITY PARTICIPATION

5.1 Community Engagement Process

Before the commencement of community engagement meetings, the DMTs were oriented in Participatory Land Use Planning with a lens of SBIA. The PLUP training workshop was conducted for five days, facilitated by officers from the Physical Planning Unit, Provincial Administration and officers from Land Alliance, a Technical Service Provider engaged to facilitate Participatory Land Use Planning in Eastern province. DMT staff from Petauke/Lusangazi were trained in facilitation of PLUP. At the end of the training, the DMT was guided to prepare an action plan and budget to be used for facilitating PLUP activities in Petauke District.

In the initial stages of PLUP activities in Manyane, Chieftainess Mwanjawanthu was identified to be the custodian of land in Manyane Ward. The team went to the Chieftainess to explain and solicit support for implementation of PLUP in the Ward falling in her Chiefdom. The chief expressed happiness and promised to offer support during the whole process of PLUP. She provided responsible Indunas to work with.

Community engagement and participation is cardinal to the success of every community project, as it inculcates project ownership and sustainability. PLUP in Manyane Ward was embarked on through a series of community engagement meetings which involved meetings with the Chief, Indunas, Headpersons and eventually the community at large in sharing the PLUP concept so that Free Prior Informed Consent (**FPIC**) could be adhered to.

Since Manyane ward has villages which are far stretched apart, community engagement meetings were held at **four (4)** designated villages. This was done to ensure that many members of each village community attended for the purpose of getting acquainted with the PLUP concept and getting first-hand information for better and uniform decision making processes in each respective community stretching across the whole Ward.

Community engagement meetings were held in three phases as follows:

First Phase: Consisted of the first village meetings. During the first village meetings, community members were exposed to the concept of PLUP which involved community identification of shared resources, identification of problems affecting the management of resources, sketch mapping of these resources and other spatial features. Participants were guided in drawing sketch maps that depicted resources in their area. To enhance participation, participants were put in three separate groups of youths, women and men. This allowed peer-to-peer interaction among participants during the exercise. After drawing the sketch maps one representative from each group was asked to present the maps before the meeting.

The maps revealed a number of resources, natural and man-made, that were in Manyane Ward. These resources included streams, forests, hills, dambos, fields, schools, health facilities, roads

etc. After the exercise, facilitators captured images of the maps and original copies were left with the communities. The pictures below demonstrate the steps during this phase:



Second Phase: Consisted of rapid village assessments where village coordinate points were captured by the enumerators in the company of Indunas so that Shared Resource Maps can be digitised and produced. Below is a picture showing the product of this stage in the process:

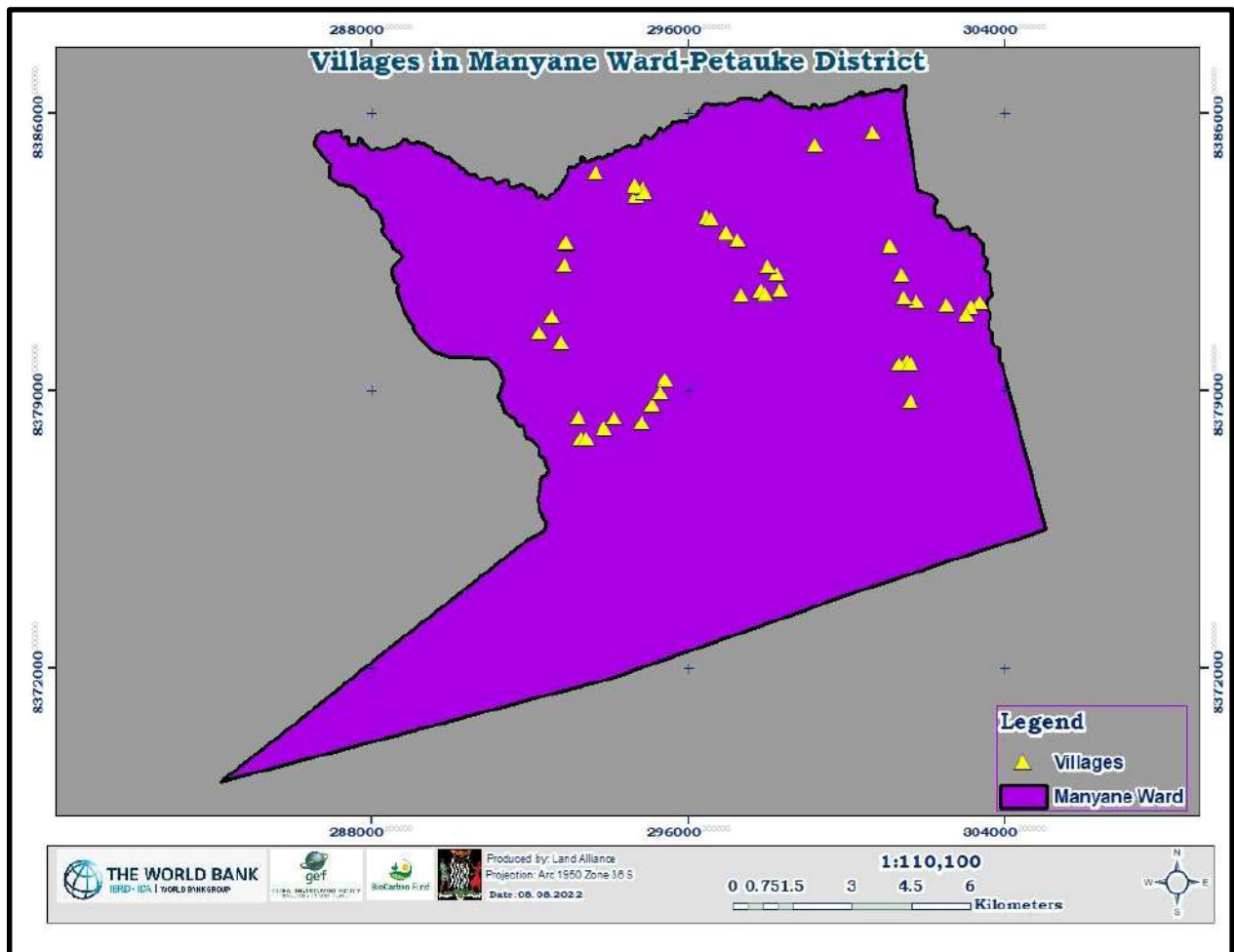


Figure 14: Sample output of Rapid Village Assessment Activity

Third Phase: In this phase community engagement meetings were also conducted for the verification of the produced Shared Resource Maps in all the villages. This presented an opportunity for the community members to make objections, corrections and additions on the earlier submitted shared resource information. Community engagement meetings also involved zoning activities in all the village areas for future land uses. Members of the community were involved in the mapping of the proposed future land use areas. It was during the third phase of community engagement that Resource Governance Rules were also formulated for approval by HRH Chieftainess Mwanjawanthu. Below are pictures showing communities validating the mapped resources and proposing areas of conservation:



The attendance registers for each meeting have been attached in Annex 2.

5.2 Agreed Local Rules for Land Use and Resource Management

Prudent management of natural resources where the residents derive much of their livelihood in the rural communities is a daunting task in the absence of agreed upon local rules for land use and resource management. The formulated by-laws for Manyane Ward aimed at facilitating the prudent use of local resources are attached as Annex 1.

5.3 Problem Identification

There are several challenges that rural communities face and Manyane residents are no exception. The most prominent challenges are:

- Unsustainable agriculture practices.
- Lack of tenure security due to undocumented tenure rights.
- Marginalisation of the vulnerable groups such as women and youths.

Issues affecting land use in Manyane Ward were captured during the clustered community meetings which were conducted. The problems, causes and suggested solutions to the problems faced by residents of Manyane Ward are as outlined in the table below:

Problem	Causes	Possible Solutions
<ul style="list-style-type: none"> • Inadequate safe water sources • Drying of streams • Delayed rains • Loss of soil fertility • Reduced crop yield • Shortage of land for agriculture • Poor roads • Deforestation • Inadequate communication facilities • Inadequate Dams 	<ul style="list-style-type: none"> • Lack of safe water facilities • Poverty and ignorance • Seasonal streams and late onset of rains • Land degradation • Unsustainable agricultural practices • Lack of alternative livelihood sources • Lack of by-laws • Inadequate communication towers • Siltation 	<ul style="list-style-type: none"> • Drilling of boreholes and Dam construction • Adopting conservation farming practices • Adopting climate smart agriculture practices • Rehabilitation/construction of roads and related infrastructure • Skills in mushroom conservation and bee keeping • Installation of Communication Towers.

Table 6: Problems Identified

6. CORE ISSUES AFFECTING LAND USE AND THE ENVIRONMENT

At the four clustered community meetings held at Mankhungwe, Sanjama, Chizanda and Matonje, members across villages in Manyane Ward identified various problems affecting them. During this session, participants were guided on how to prioritise the identified problems. This was done through pair-wise ranking, which involved participants comparing a particular problem against each of the other identified problems. This was done to help communities to identify and rank problems in order of importance and gravity so that core problems could be identified for intervention. This activity revealed the actual core problems to be addressed, as the others identified as problems were simply the results of the core problems. The main core problems identified at these meetings are listed in table 6 above.

The quest to increase crop production often leads to expansion of agricultural fields and consequently encroachment into forests as is currently the case in Manyane.

The high levels of poverty in the Ward make communities heavily dependent on fuelwood and charcoal. The identified alternative sources of energy such as gas stoves and cook stoves are unaffordable and extensively unavailable.

Land tenure regarding forests and other communal/shared resources is often misunderstood because community members claim that forests and trees in the wild in general do not belong to anyone. In addition, forest fires were identified as a key driver to deforestation and forest degradation. There is a general belief held among communities that bush fires, being a long-term part of their land and forest management system and historical part of their culture, do not significantly affect forests in a negative way.

Participants were further guided to identify the causes of such problems. This was done to make them realise that there was a human activity element related to the problems. Facilitators summed up the activity by explaining that some of the problems identified, especially those related to the environment, were as a result of lack of Land Use Planning.

6.1 Lack of Safe Water Sources

Residents of Manyane Ward mainly depend on boreholes and water wells for water, although most of the boreholes are limited to areas around schools and health facilities. As a result, those living far from such facilities have challenges in accessing water, especially that all the streams in the Ward are seasonal. The map below shows the distribution of water points in Manyane:

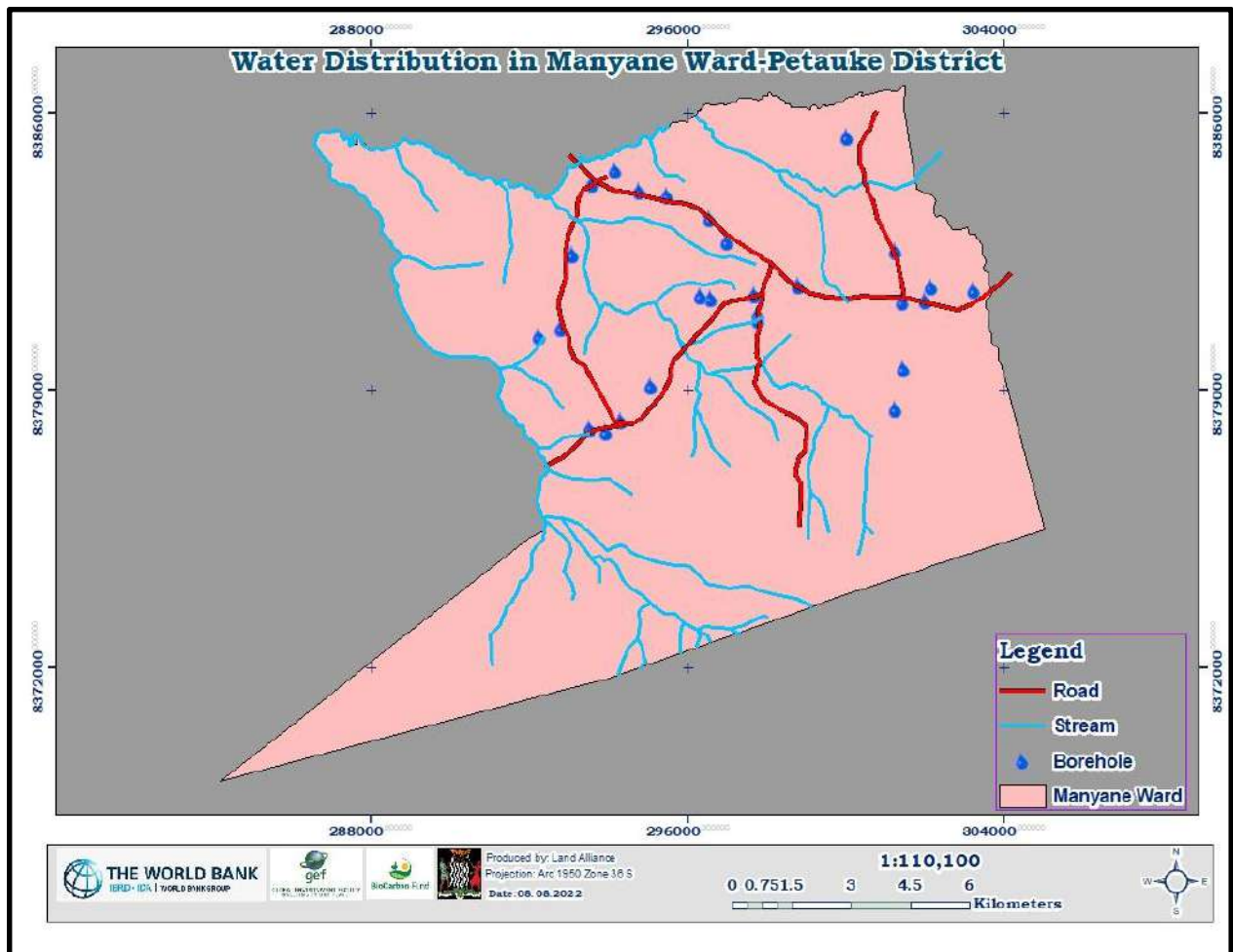


Figure 15: Distribution of Water Sources

6.2 Soil Degradation

This problem is mainly as a result of encroachment into forest areas and protected areas, unsustainable agricultural practices, bush fires and cutting down of trees for either charcoal production, field expansion or by poorly managed animal grazing. This has, in turn, affected land productivity, leading to food insecurity and livelihood challenges. Thus, adoption of Climate Smart Agriculture and formulation of by-laws prohibiting unsustainable land resource use can help avert the problem of soil degradation.

6.3 Poor State of Roads and Related Infrastructure

Inadequate transport system and lack of proper road network hampers development in Manyane Ward because the movement of goods and services (required for such development) depends on transportation. The Ward also lacks other road-related infrastructure such as bridges/culverts, making certain areas inaccessible, especially during the rainy season. This makes access to essential services such as health facilities and schools very difficult for residents, especially those in far away places.

6.4 Long Distances to Schools

The entire Manyane Ward has a total of **five (6)** primary schools and **one (1)** secondary school. These schools enable children within the Ward to receive adequate primary education, but the presence of only one (1) secondary school in the Ward means children cover long distances to access secondary school education.

With reference to the Ministry of Education standards of population of having access to school facilities within 5 kilometres distance, the analysis on Manyane Ward shows that:

- Only **24** of the **45** villages in the Ward fall within the recommended 5km radius of the only Secondary School (Ng'ombe Nimatole Matonge Day School) in the Ward. The remaining **21** fall outside this recommended Service Radius.
- **All** villages in the ward fall within the recommended 5km radius of one or more of the 5 primary schools in Manyane Ward.

That being the case, secondary education levels are generally low in Manyane Ward. This is mainly attributed to the lack of adequate secondary education facilities due to the presence of only one (1) secondary school in the Ward. The figures below show the education facility service radius for primary and secondary education:

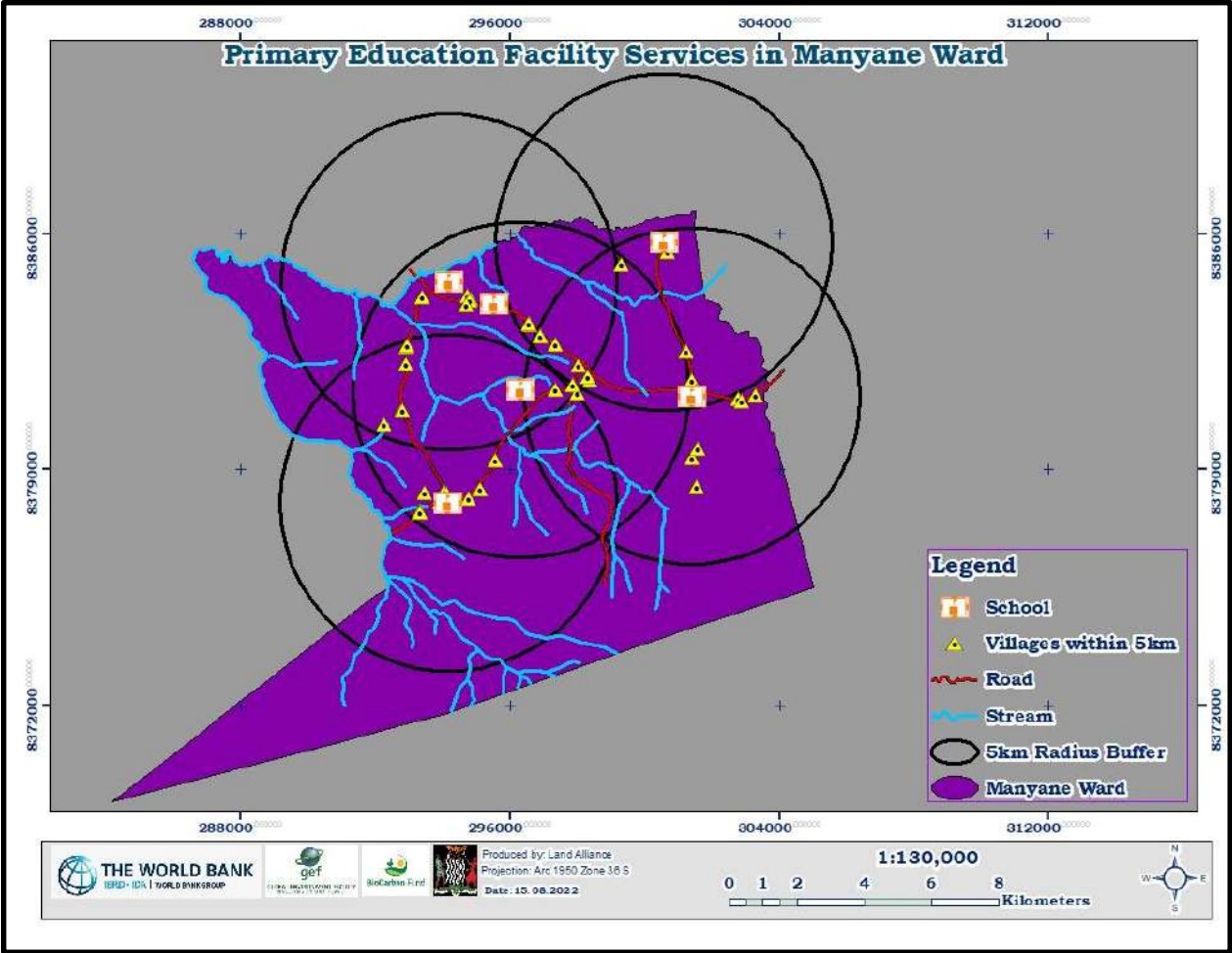


Figure 16: Primary Education Facility Service

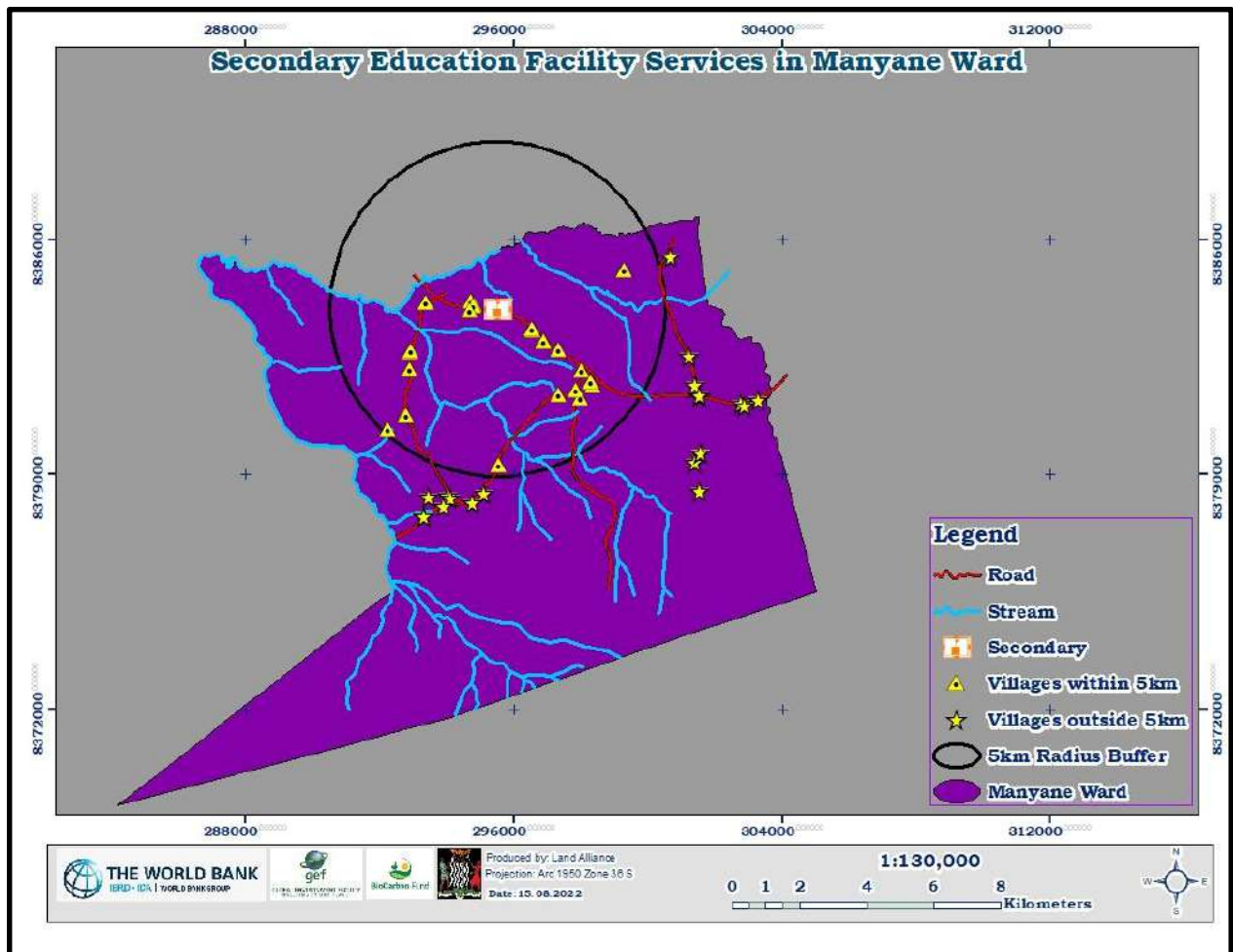


Figure 17: Secondary Education Facility Service

6.5 Inadequate Health Facilities

There are currently **one (1)** health facilities in Manyane Ward (**Mankhungwe Health Post** and another unnamed Health facility) servicing residents of Manyane and other surrounding areas.

With reference to the government standards of population of having access to health facilities within a 5 km distance, the analysis on Manyane Ward shows that:

- **33** villages out of the **45** villages found in Manyane Ward fall within the recommended 5 km radius of at least one health facility. The remaining **11** villages in Manyane Ward fall outside this recommended service radius.

Thus, it suffices to mention that any future plans by the community should take care of the demand for primary health care, which will increase in Manyane Ward and surrounding areas due to people migrating from other parts of the district. The current health services will need to be expanded in order to improve the quality of health care. More health personnel will be required to ensure that the current high health worker to patient ratio is reduced. The figure below shows the service radius for health facilities in Manyane Ward:

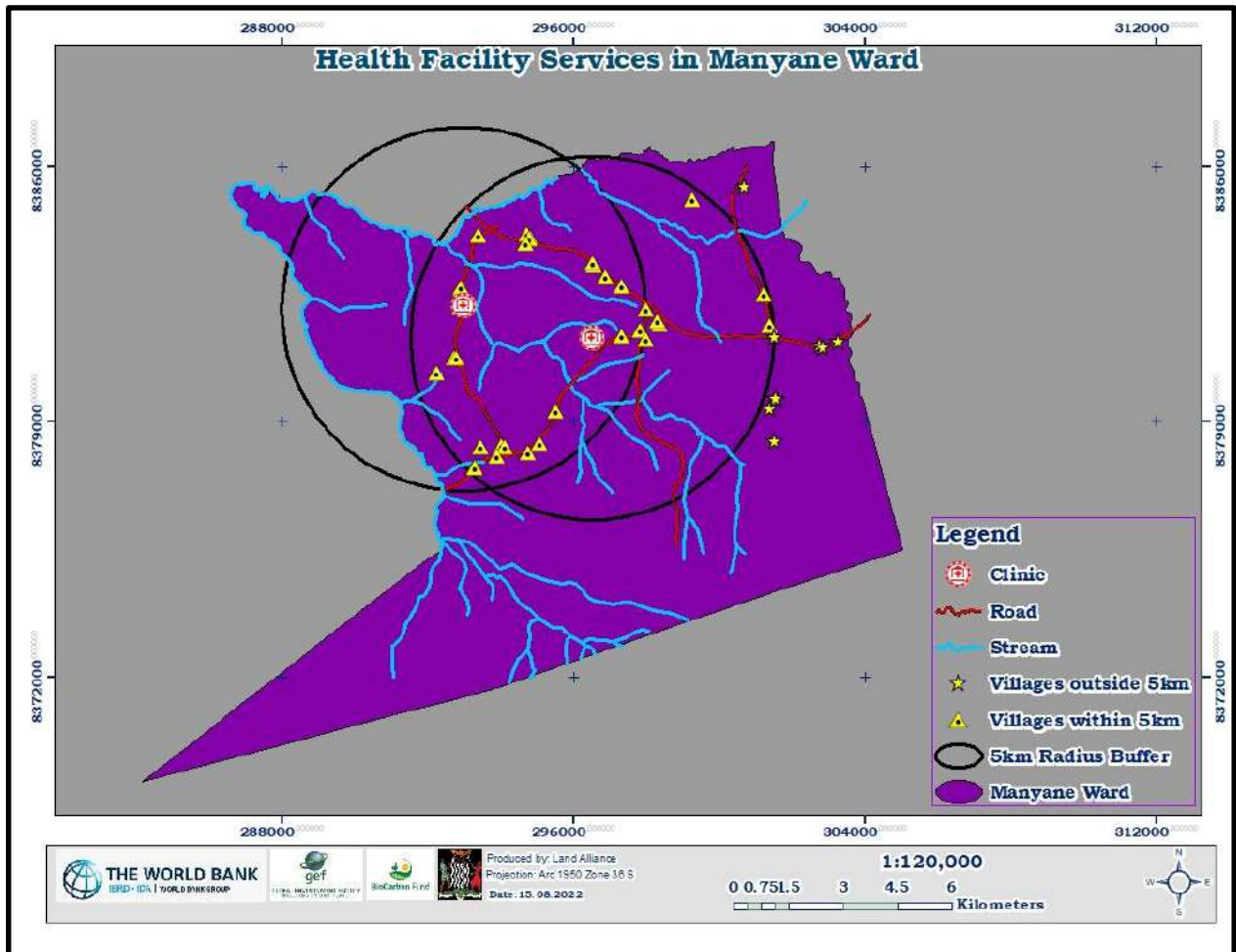


Figure 18: Health Facility Service Radius

6.6 Inadequate Telecommunication Facilities

The community in Manyane Ward identified telecommunication as a major challenge affecting the Ward. The data analysis in the area shows a deficiency of this service, with no network tower installed in the Ward. The telecommunication network tower installations facilitate the ease of

access to diverse forms of information within the shortest possible time. Having telecommunication towers installed in the Ward would enable the residents of Manyane Ward and surrounding areas to interact through phone-calls, messaging, internet etc. With the development of the 4G internet speed, citizens are able to surf the internet with less difficulty. Mobile money platforms have also made money transactions easier. In order to make this possible, several service providers ZAMTEL (Zambia Telecommunications Network), MTN (Mobile Telecommunications Network) and AIRTEL have established themselves in Petauke District, through the installation of network towers which enable transmission of signals containing information from the sender to the recipient, and vice versa, and capturing of satellite signals.

The advent of the Covid-19 pandemic, which led to the closure of all learning institutions in the country in 2020 and 2021, forced most institutions to conduct lessons using e-learning platforms, especially for students and pupils in examination classes. Manyane Ward was no exception to this, and the lack of telecommunication towers presented challenges in internet access for residents of the Ward and most pupils in Manyane Ward were affected by this. This highlights the need for adequate telecommunication facilities to be installed within the ward.

7. LAND USE PLANNING – ZONING, VALIDATION AND GOVERNANCE RULES

This activity was meant for communities to object, correct and confirm that all the mapped resources were captured on the maps and propose areas to be protected. Communities agreed on the by-laws that will help them manage their resources and other areas of development in a sustainable manner. Four (4) clustered meetings were held in Manyane Ward at Mankhungwe, Sanjama, Chizanda and Matonje. Printed shared resource maps on A1 were presented to the communities to confirm if the shared resources shown on the maps were a true reflection of their input. This was done in a consultative manner to make sure that the communities take responsibility for the process and the product, which is the PLUP. Community members selected the resources to be protected and zoned the areas and proposed other areas for developmental activities such as trading areas, clinics, schools and any other facilities that would support the improvement of their livelihood. Shared resources in the Ward overlap between sections/areas, especially that these sections/areas have imaginary boundaries. Thus, for the purpose of clearly presenting the proposed land uses, the meetings were clustered into four (4) areas with total attendance of 235 disaggregated as 91 males and 144 females as shown in table 7 below:

Community Area	Female	Male	Total No. of participants
Mankhungwe	80	27	107
Sanjama	18	19	37
Chizanda	17	16	33
Matonje	29	29	58

Table 7: Attendance Statistics

7.1 Mankhungwe Community Meeting

The first validation meeting was held at Mankhungwe primary school with a representation of 11 villages (**Nyanthalo, Abram, Nyamilongo, Kapinde, Mpwal, Mankhungwe, Julius, Nthambalika, Mulinda, Mkonya and Kamono**). The total number of participants in this meeting was **107** (27 Male, 80 Female). The community proposed Mankhungwe as a forest and Chmyangulu and Chikanula as woodlots. They also proposed the construction of a dam at Bvumbwe stream, and fish ponds also at Nyansato stream and upgrading of Mankhungwe health post into a full-fledged clinic.

The rationale for the proposed developments was built on the problems that were identified during the first village meetings conducted in the area as a measure of mitigating the effects of climate change and improving their welfare by identifying alternative sources of livelihoods. For example, if a dam can be constructed, it would provide an opportunity for smallholder farmers to venture into fish farming and irrigation farming. Meanwhile, the same dam would provide water for their animals and in the long run, the dependence on Charcoal production as a means of survival would reduce. The forest would provide an opportunity for beekeeping and mushroom harvesting. Investments would be attracted, which would result in the upgrading and servicing of roads. The table below shows the proposed areas of development and the land coverages:

S/N	Proposed Development	Area (Ha)
1	Dam (Mvumbwe Stream)	18.79
2	Fish Ponds (Mvumbwe)	10.72
3	Fish Ponds (Nyasanto)	6.44
4	Forest (Mathungwa)	12.56
5	Forest (Chinyangulu)	20.95
6	Forest (Chikanula)	25.27
7	Clinic (Upgrading of Mankhungwe Health Post into a Clinic)	3.63

Table 8: Land Reservations for Mankhungwe Community Meeting

The map below shows the proposed developments and future land uses for villages that were represented at the meeting held at Mankhungwe:

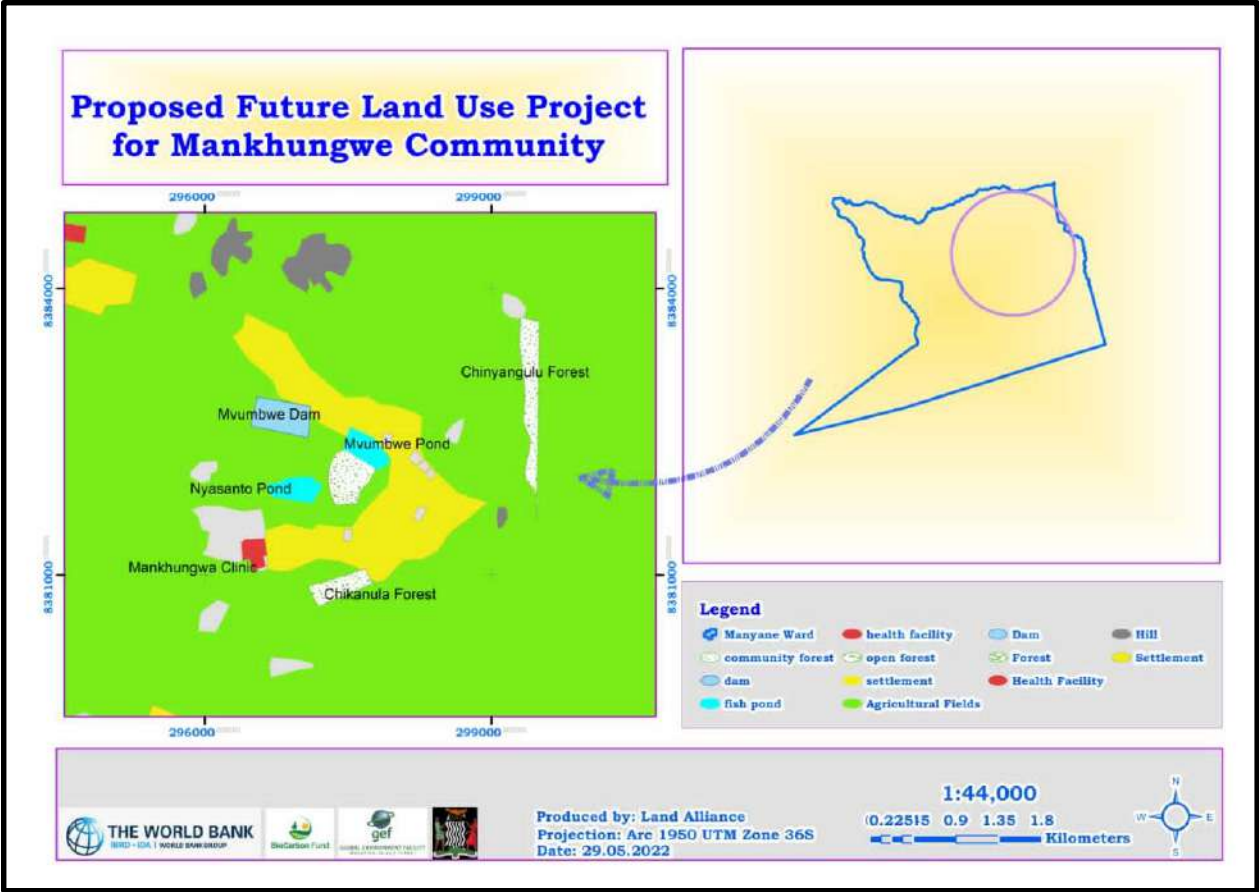


Figure 19: Future Land Use Map for Mankhungwe Community Meeting

7.2 Sanjama Community Meeting

The second validation and zoning meeting was held at Sanjama Primary School with a representation of four (4) villages (**Malima, Monga, Kabanika and Makoza**). The total number of participants was **37** (19 Male, 18 Female). The community proposed a site for forest, and proposed the construction of fish ponds, a dam and a clinic. The justification for the proposed developments was built on the problems that were identified during the first village meetings conducted in the area as a measure of mitigating the effects of climate change and improving their welfare by identifying alternative sources of livelihood. The table below shows the proposed areas of development and the land coverages:

S/N	Proposed Development	Area (Ha)
1	Forest (1 Site)	21.75
2	Clinic (1 Site)	-
3	Fish Ponds	6.44
4	Dam (1 Site)	24.72

Table 9: Land Reservation for Sanjama Community Meeting

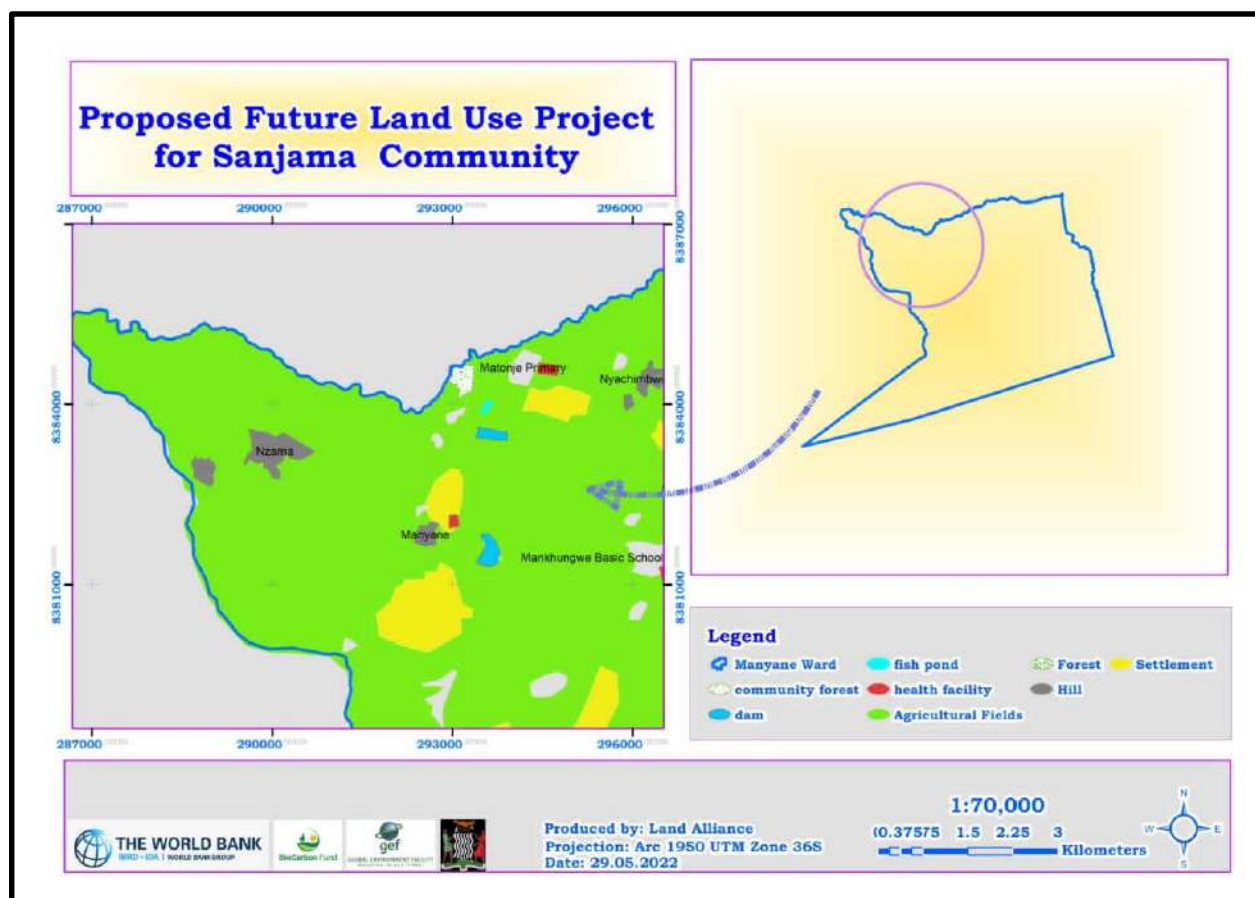


Figure 20: Future Land Use Map for Sanjama Community

7.3 Chizanda Community Meeting

The third validation and zoning meeting was held at Chizanda with a representation of **8** villages (**Zumani, Nyanoka, Chimtenje, Gandisani, Nyakumwa, Naniwe, Nzipula** and **Gideon**). The total number of participants was **33** (16 Male, 17 Female). The community proposed community forest, construction of a dam at Tambombwe stream and a market. The rationale for the proposed development was built on the problems that were identified during the first village meetings conducted in the area as a means of mitigating the effects of climate change and

improving their welfare by identifying alternative sources of livelihood. The table below shows the proposed areas of development and the land coverages:

S/N	Proposed Development	Area (Ha)
1	Forest (Chipungu Hill)	10.16
2	Dam	14.34
3	Market	8.96

Table 10: Land Reservation for Chizanda Community Meeting

The map below shows the proposed developments for the community represented at the Chizanda Community Meeting:

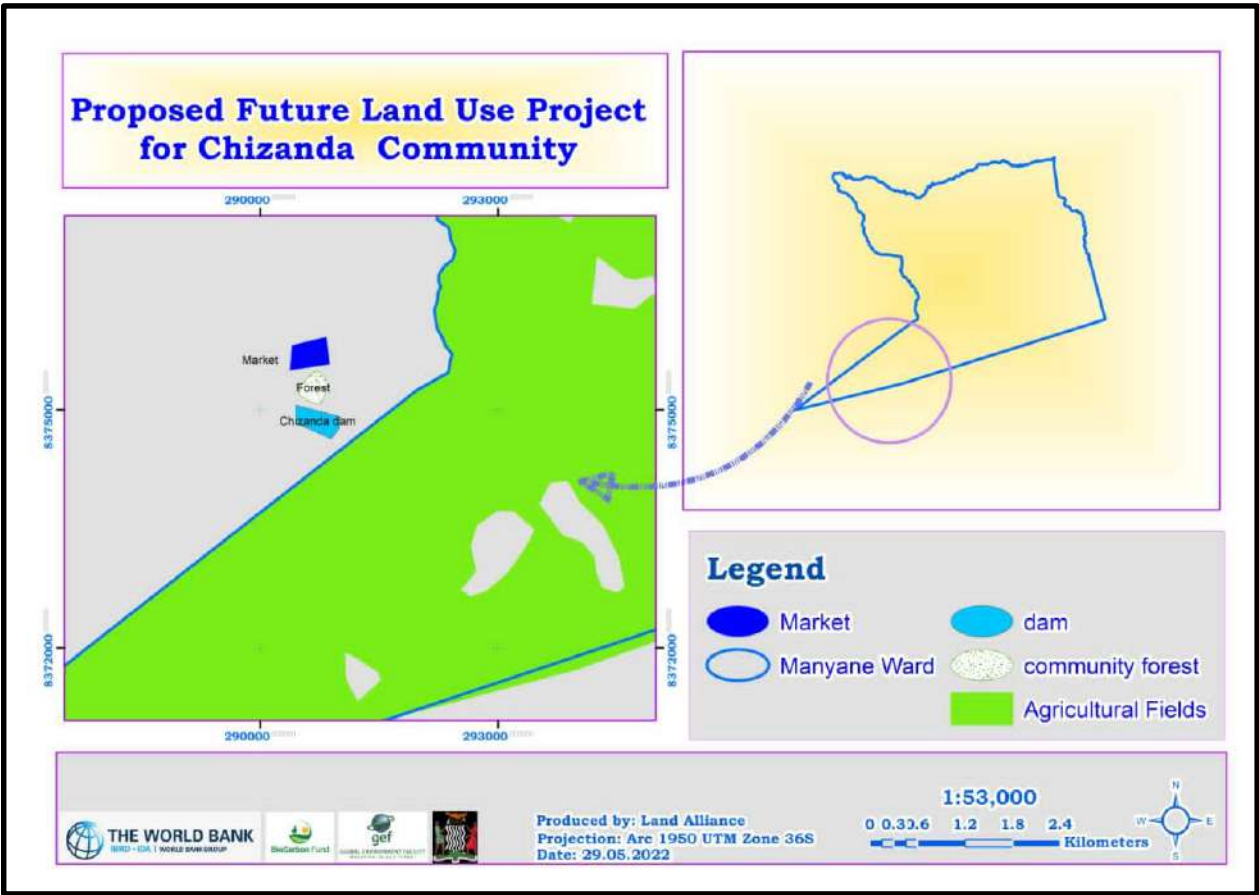


Figure 21: Future Land Use Map for Chizanda Community

7.4 Matonje Community Meeting

The fourth validation and zoning meeting was held at Matonje school with a representation of 8 villages (**Nyankawa, Chibale, Matonje, Nyamwai, Julius Kamphende, Jombo Nsalavu, Nyanza and Kasongo A and B**). The total number of participants was **58** (representing 29 women and 29 men). The community proposed Nyantungwa hill for community forest, proposed the construction of dam at Bvumbwe stream and fish ponds at Chamyumbu and boreholes (Nyamwai and Kasongo villages), Construction of police post at Kasongo village, boarding school and dip tank at Matonje village. A network tower was also proposed at Nyachimbi hills. The rationale on proposed development was built on the problems that were identified during the first village meetings conducted in the area as a means of mitigating the climate change as well as improving their welfare by identifying alternative sources of livelihood. The table below shows the proposed areas of development and the land coverages:

S/N	Proposed Development	Area (Ha)
1	Forest (Nyatungwa)	15.04
2	Dam	8.12
3	Fish Ponds	1.92
4	Police Post	0.88
5	Dip tank	0.48
6	Boarding School	7.76

Table 11: Land Reservation for Matonje Community Meeting

The map below shows the proposed developments for the community represented at the Matonje Community Meeting:

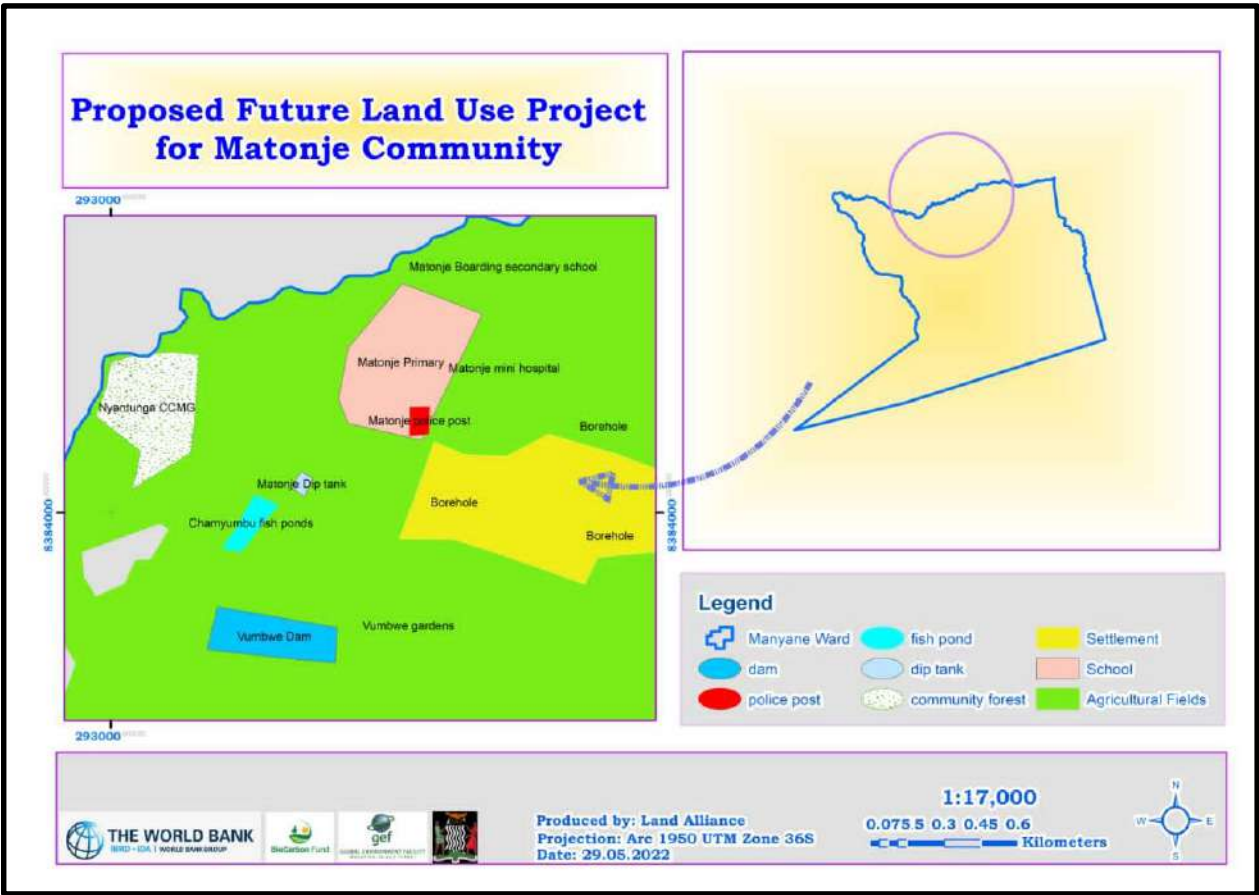


Figure 22: Future Land Use Map for Matonje Community Meeting

8. FRAMEWORK OF THE PLUP AND ENVIRONMENTAL MANAGEMENT PLAN

The environmental assessment of Manyane Ward highlighted the immediate development trends and environmental requirements of the area. Based on that, the PLUP Environmental Management Framework was compiled with the aim of guiding future developmental planning and decision-making processes. However, the potential environmental and social impacts of the PLUP activity are numerous, but mainly positive. Much of the negative impacts may be experienced during implementation of the identified sub-projects (based on the identified core issues within the ward) aiming to provide alternative livelihood sources and helping in mitigating unsustainable natural resource use and management. The specific impacts will be evaluated and distinguished during the preparation of the specific Environmental Management Plans (EMP) based on the identified sub-project investments. Therefore, this PLUP Environmental Management Plan was made with guidance originating from the current land uses and the proposed future land use analysis.

S/N	Aspect	Description	Impact	Mitigation Measure
1	Soil Erosion and Degradation	By the year 2030, the population of both Petauke and Lusangazi will increase to over 410,702 people. Currently the people of Petauke (including Nsimbo ward) are dependent on crops and wood fuel which will increase drastically. That will mean more pollution and more carbon for the forests to deal with, and by 2030 these forests being currently cut down will no longer be there to process the carbon dioxide.	Clearing land for agricultural expansion, settlements, etc. increases the soil erosion potential. Crop cultivation methods have an impact on the soil quantity and quality leading to soil degradation.	<ul style="list-style-type: none"> Strengthen local community participation and commitments, and private sector involvement at both communal and individual farmer level; Adopting and investments in green energy such as the use of energy saving stoves, utilization of solar and wind energy, biogas production from the locally available materials. Controlled bush fires, use of natural pesticides.

2	Habitat Destruction	Clearing of land for agricultural use around water bodies, which leads to drying of streams. Cutting of trees for charcoal production.	Clearing of land for agricultural use around water bodies leads to drying up of streams.	Support tree planting around hills and discourage cultivation along river banks Avoid unnecessary exposure. Restrict indiscriminate cutting down of trees.	
	3	Loss of Fauna	Loss of biodiversity and siltation in the rivers	Destruction of wild fauna habitat due to unsustainable resource management. Potential investments are likely to break ecosystems, isolate species and cut off movements. For example, dams may block the upstream and downstream passage of migrating aquatic animals.	Enhance community sensitization aimed at discouraging communities from cultivating along river banks
					regulate cutting down of trees especially along river banks Undertake forest conservation activities such as community forest management. Encourage communities to come up with water schemes.
4	Air Pollution	Decreased Air Quality	Dust is anticipated during the construction phase of the identified investments as well as from vehicle movements and vehicle emissions are likely to cause air pollution.	Revegetate bare areas Regulate vehicle movements and speed. Monitor and enforce environment management mitigation measures.	

5	Resource Use Conflicts	Sabotage to investments and lack of ownership	Dam construction investments may cause conflict between those with different water needs such as farmers and pastoralists, fishery, household use, etc.	<p>Formulation of by-laws</p> <p>Identify and manage range lands</p> <p>Enforcement of by-laws regulating various investments</p> <p>PLUP development</p> <p>Land use decisions must be inclusive of all users and groups, including women, youths and differently abled people in the area.</p>
6	Loss of Land	Displacement of communities or households and reduced grazing land which can cause conflict	There may be loss of farm and grazing land among others by the local communities owning land to investments projects and forest conservation.	<p>Communities must identify project areas in consultation with their leaders.</p> <hr/> <p>Communities must use Free Prior Informed Consent (FPIC)</p>

Table 12: Environmental Management Plan

9. IMPLEMENTATION STRATEGY

The table below outlines the PLUP Implementation Strategy

Problem	Objectives	Strategy	Output	Indicator
Shortage of Water for Animals and Irrigation	To Improve Access to Water Supply for animals and irrigation	Dam Construction at identified sites	At least 4 dams constructed at Bvumbwe, Sanjama, Chizanda and Matonje	Number of dams constructed.
Inadequate Trading Areas	To promote investment and access to goods and services	Construction of market at identified sites	At least one (1) market constructed at Chizanda	Number of markets constructed
Inadequate Telecommunications Towers	To create connectivity between the rural and urban communities for easy dissemination of information such as COVID prevention and other pandemics	Installation of communication towers by Telecommunication Companies	At least each Telecommunication Company should put up a tower (MTN, Zamtel and Airtel).	Number of communication towers installed
Soil Degradation and Deforestation	To Promote Environmental Protection and Conservation of Natural Resources	Tree planting exercise and promote natural vegetation growth	Plant at least 10,000 trees	Number of trees planted
		Establishment of Community Forests at identified sites	Establish at least 6 Community Forests at Manthungwa, Chimyangulu, Chikanula, Sanjama, Chipungu Hill and Nyanthungwa	Number of Community Forests Established

Poor Agricultural Practices	To promote agricultural productivity.	Adoption of Climate smart Agriculture	At least 75% of local farmers adopt the CSA technique	Percentage adoption of CSA
		Deployment of extension workers	At least 1 extension worker deployed	Number of extension workers deployed
Poor State of Roads and Related Infrastructure	To promote spatial growth and improve transport system	Rehabilitation of roads	Rehabilitate all roads	Number and length (KM) of roads rehabilitated
		Construction of culverts and bridges	Construct culverts and bridges across all streams	Number of culverts and bridges constructed
Inadequate Health Facilities	To increase the number of health facilities	Construction of health facilities at identified sites	Construction of at least two (2) health facilities in Sanjama and Mankhungwe	Number of health facilities constructed
		Construction of health staff houses	At least 6 staff houses (3 per health facility)	Number of staff houses constructed
Long Distances to Schools	To attain a high quality education standard by increasing the number of schools and reducing the teacher to pupil ratio in all schools within the ward	Construction of new classroom blocks	Construct at least 12 classroom blocks in the ward (2 per school)	Number of classroom blocks constructed
		Construction of schools at identified sites	Construct at least 1 school in Matonje	Number of schools constructed
		Construction of teacher and staff houses	Construct at least 12 teacher and staff houses	Number of staff houses constructed

Lack of Alternative Livelihood Sources	To enhance human development through skills training and empowerment programs	Establishment of a skills training centre	At least 1 skills centre established	Number of skills centres established
		Train farmers in fish farming, bee keeping and mushroom conservation Techniques	Train as many people as possible	Number of people trained
		Construction of Fish Ponds at identified sites	At least 4 fish ponds constructed at Matonje, Sanjama, Bvumbwe and Nyansato	Number of Fish ponds constructed
		Establishment of value addition plants	At Least 2 value addition plants established in the ward	Number of value addition plants established

Table 13: PLUP Implementation Plan

9.1 Capital Investment Projects

Priority Projects	Quantity	Unit Cost (K)	Total Cost (K)
Dam Construction	4	TBA	TBA
Construction of health Post	2	500,000	1,000,000
Construction of a school	1	500,000	500,000
Construction of Staff Houses	18	200,000	3,600,000
Roads Rehabilitation	5	TBA	TBA
Construction of classroom blocks	12	450,000	5,400,000

Table 14: Capital Projects Identified

10. INSTITUTIONAL ARRANGEMENT FOR PLAN IMPLEMENTATION

The Local Authorities will play a critical role in supporting the implementation of PLUP in line with the guidelines and provisions of the URP Act No.3 of 2015. The Forestry Department, Department of National Parks and Wildlife and Ministry of Agriculture will be the main implementers of the PLUP while the Ministry of Health, Ministry of Education and other line ministries will be monitoring adherence to the zoning of the land use plan with regards to schools, health facilities and other developmental and social land reserves.

Manyane Ward PLUP is envisaged to be implemented in line with the Petauke/Lusangazi JIDP which is running for a period of 10-years from 2021-2030. Being a local plan, the Traditional Authority will work hand in hand with the DMT team in the implementation process since the plan is part of the Integrated Development Planning framework. The plan also provides an opportunity for the traditional leaders to lobby for support from the government through local authorities e.g. from the Constituency Development Funds (CDF).

At chiefdom level, the traditional authority with guidance from the DMT team will choose community representatives who will be overseeing and executing PLUP activities and will intermittently rehearse with both the DMT and the Chiefs on the implementation process.

The mandate to carry out minor (pilot) measures may in some cases need to be transferred to the civil society (i.e. self-help groups, cooperatives, farmers' organisations or local NGOs). It is also possible that private sector companies or individual consultants take over this part so that

the Government, through DMT, only concentrates on the supervision and monitoring of the process.

11. CONCLUSION

The PLUP for Manyane Ward was developed through a consultative and participatory process, and technically analysed by the Land Alliance Consortium - the TSP hired by ZIFL Project - in consultation with the Petauke/Lusangazi DMT team. Additionally, the PLUP analysed the current situation in Manyane Ward, issues pertaining to Land Use Planning were identified, with lack of alternative sources of livelihood being one of the key drivers of unsustainable natural resources management. At the same time there has been haphazard and unsustainable use of land and other natural resources by residents of Manyane Ward and those residing in surrounding areas largely due to lack of documented rules and regulations governing the use of resources. Therefore, it is hoped that this PLUP will be used for the purpose for which it was developed.

12. GLOSSARY

12.1 Natural Resources

One of the essential and prerequisite activities when embarking on participatory land use planning is understanding the quality and quantity of the land resources. Besides, participatory land use planning forms a basis for obtaining optimum level of production and also helps in introducing appropriate land management practices for better and/or improved livelihoods (Schwedes and Werne, 2010). Therefore, natural resources must be understood as conditions and elements of the land that can be exploited, developed or managed without causing negative impacts that risk the fragile environmental relationships (Negash. 2012). The following are some of the natural resources:

12.1.1 Vegetation

In the context of PLUP, vegetation refers to all plant species that are unsustainably managed and used by communities for any of their land uses. The vegetation is used to mainly fulfil community needs such as gathering firewood, fruits, medicine, poles and also serves as habitats for wild animals. On the other hand, vegetation provides cover for the soil, allows the rainwater to percolate into the ground, and protects the soil from erosion.

12.1.2 Soils

This is one of the key elements across the globe that determines what land can be used for, taking into consideration the physical and chemical properties (FAO, 2006). The soils exert influence in determining the feasibility of land uses and composition of natural communities such as plants, animals, etc of an area. Thus, land use planning may demand a study on physical and chemical conditions, composition, and overall characteristics of soils (GIZ, 2012; Negash, 2012). This is due to the fact that knowing the soil characteristics helps in understanding the past and present land uses and helps in predicting future land use potentials.

12.1.3 Water

This is an essential resource which is required for use by human beings and Wildlife. It is also used for irrigation and navigation by people and by plants to perpetuate, grow and produce

(Mitchell et al, 2004). Besides, the quantity of available water determines the type of land use options and land utilisation types. Thus, the availability and accessibility of water resources in an area determine sustainability and the types of land uses that can be implemented (GIZ, 2012).

12.2 Climate

Climate is one of the factors that affects land use as it is the major agent that determines water balance and dictates the nature and type of natural vegetation in a specific area (Malcolm et al, 2006). Interactions among climate, relief and soils are important in determining socially acceptable, economically viable and environmentally sound land use types (FAO, 1993). The main climatic elements which directly govern land use types to be considered for a certain area are the rainfall amount and distribution and the air temperature level (Negash. 2012). Thus, data on these elements is so important for sustainable local level land use planning processes. The following climatic elements are important factors in determining the land use options of a certain locality or planning area.

12.2.1 Rainfall

The term precipitation includes rainfall, snow and dew. The availability of water through precipitation or rather the lack of it is often the most limiting physical factor in crop and livestock production in areas where water for irrigation is scarce. It's of great importance to know the rainfall patterns of a given area when undertaking any level of land use planning. Besides, the seasonal distribution of rains governs the choice of major land uses, crops and the optimal planting time, harvesting and other farming operations such as land preparation, weeding and threshing (Negash. 2012).

12.3 Land Use Planning

According to Liversage and Mangiafico (2014), land-use planning is the systematic assessment of land and water potential, alternatives for land use and economic and social conditions in order to select and adopt the best land-use options. It's a process of decision making on the use of the resources of a certain unit of land for options of more productivity, environmentally sound and sustainable economic uses (JICA, 2011). However, Negash (2012) argued that decisions on land

use options are based on the analysis of potentials and constraints of the land resources as guided by the competing needs of the communities.

12.4 Participatory Land Use Planning

This is an interactive process in which local communities could discuss and determine how to manage the land and other natural resources in their locality (JICA, 2011). It is based on dialogue among all stakeholders with an aim of making sustainable land use decisions through negotiation (GIZ, 2012). The intention is to form comprehensive land use options based on the quality and quantity of the resources and the needs of the community (PLUP Manual, 2019). The land use plan aims at improving the livelihoods of the existing community and meeting the resource development and administration needs of the future generation (Negash. 2012).

12.5 Livelihood

This can be defined as means and ways of making a living. It encompasses people's capabilities, assets, income and activities required to secure the necessities of life (Mutea et al, 2019). According to Kassa (2018) livelihood is said to be sustainable if it enables people to cope with and recover from shocks and stresses (such as natural disasters and economic or social upheavals) and enhance their well-being and that of future generations without undermining the natural environment or resource base.

Presently, natural resources are overexploited, exceeding the rate at which they are replenished due to the increase in the demands because of high population increase and unsustainable usage (Abu and Soom, 2016). Hence, land use planning is the tool that can well be utilised in order to improve and maximise the usage and management of resources in order to better improve the livelihoods of people. This is because LUP bases its processes on the quantity and quality of resources available that can improve livelihoods and the environment (GIZ, 2012). Thus, decisions are made based on the knowledge of resources by all stakeholders.

13. REFERENCES

1. Petauke/Lusangazi District Joint Integrated Development Plan (JIDP) 2021.
2. JICA 2011. Participatory Land Use Planning: Community Based Natural Resource Management. Available:
<https://www.jica.go.jp/project/english/easttimor/003/index.html>
3. Food and Agriculture Organization (FAO). 1993. Guidelines for Land-Use Planning. Rome, Italy.
4. Liversage, H and Mangiafico, M.E. 2014. How to do Participatory land-use planning: Land tenure toolkit.
5. GIZ. 2012. Land Use Planning: Concept, Tools and Applications. Federal Ministry for Economic Cooperation and Development (BMZ): Eschborn, Germany. p. 268.
6. Ayantoye K, Amao J. O. and Fanifosi G. E. 2017. Determinants of livelihood diversification among rural households in Kwara State, Nigeria.
7. Malcolm, J. R., Liu, C., Neilson, R. P., Hansen, L. & Hannah, L. 2006. Global Warming and Extinctions of Endemic Species from Biodiversity Hotspots.
8. Kassa W.A. 2018. Determinants and challenges of rural livelihood diversification in Ethiopia: Qualitative review. Journal of Agricultural Extension and Rural Development.
9. Mitchell D, Buxton M and Budge T. 2004. Assessing the Role of Land Use Planning in Natural Resource Management. Spatial Planning for Sustainable Development.
10. Schwedes, S and Werne, W. 2010. Ministry of Lands and Resettlement and German Technical Cooperation in the context of the Modelling Land Use Planning Project.
11. Negash, M. 2012. Local Level Participatory Land Use Planning Manual: Concepts and steps in LLPLUP. Ministry of Agriculture Rural Land Administration and Use Directorate.
12. Mutea. E, Bottazzi. P, Jacobi. J, Kiteme. B, Speranza. C.I and Rist. S. 2019. Livelihoods and Food Security Among Rural Households in the North-Western Mount Kenya Region
13. Abu, G. A., and Soom, A. (2016). Analysis of factors affecting food security in rural and urban farming households of Benue State, Nigeria.

14. Shitumbanuma. V, Simfukwe. P, Kalala. D, Kaninga. B, Gondwe. B, Nambala. M, Kabwe. S, Siulemba. G, Kapulu. N, Lungu. O and Mutegi. J. 2014. Integrated Soil Fertility Management in Zambia.
15. FAO (2006). Food security. Policy Brief 2, 1–4.

ANNEXES

Annex 1: Manyane Ward by- Laws on Land Use and Natural Resource Management

Preamble

Having resources identified and zoned is not a guarantee that there will be proper management, hence establishing rules is key to sustainable management of all natural resources. The communities of Manyane ward did not want just to leave things at zoning level but they also formulated by-laws pertaining the use and protection of natural resources that were identified in their community. Traditionally, no one is allowed to give a penalty to the offenders except the chief as he is the custodian of natural resources in the chiefdom.

GOVERNANCE RULES FOR MANYANE WARD

Resource/Development	Rules	Penalty to Offenders
Water Resources	No farming activities around the dam and other water bodies, the buffer zone of 50m shall be applied.	Direct report to HRH Mwanjwanthu.
	No illegal fishing on the dam.	
	No depositing of poisonous chemicals in the dam.	Face the punishment.
	No cutting down of trees around the dam.	
	All gardening activities to be done on one side of the dam to allow animals to have access to water.	
No farming activity to be done around the buffer zone of the dams and streams.		
Forest	No cutting down trees in forest are allowed	Face punishment from HRH Manjwanthu
	No charcoal burning in the forest	
	No cattle grazing in the forest	
	No farming activities in the forest area	
	No fire burning in the forest	
	No fetching of firewood in the forest without permission	

Trading Area	No building of a house in the trading area	The land rights will be revoked by HRH Mwanjawanthu.
	Only the development committee recognised by the chief has the right to allocate plots.	Report to the chief.
	No farming activities are allowed in the trading area.	
Expansion of Agricultural Area	Anyone wishing to expand the field should get consent from the chief.	Any offender shall be reported to the chief for further action.
Hunting	No hunting is allowed in the chieftom.	Any offender shall be reported to the chief for further action.
Telecommunication Towers	No vandalism of Telecommunication Towers.	Inform the chief and report to the police.

Table 15: Offences and Penalties

Annex 2: Meeting Attendance Registers

First Village Meetings

PETAUKE DISTRICT
ATTENDANCE LIST FOR THE PLUP
COMMUNITY MEETING

VENUE: SANJAYA DATE: 21st APRIL 2022

SNO.	NAME	GENDER (M/F)	VILLAGE/DESIGNATION	DISTRICT	CONTACT NO.	EMAIL ADDRESS	SIGNATURE
1	Tika MUMBA	F	Kaulo	PETAUKE			T. Mumba
2	MARAT SANJAYA	F	Kaulo	"			M. Sanjaya
3	NSAMBI LUNGU	F	Kaulo	"			N. Lungu
4	DANIEL ZULU	F	"	"			D. Zulu
5	HELEN TEMBO	F	MUNIMBA	"			H. Tembo
6	FLORENCE TEMBO	F	"	"			F. Tembo
7	ELINA MUMBA	F	Kaulo	"			E. Mumba
8	ELIZABETH PHIRI	F	MALIPA	"	99634052		E. Phiri
9	MARAT PHIRI	F	CHENZYA	"			M. Phiri
10	MARAT TEMBO	F	CHENZYA	"	9961463961		M. Tembo
11	PHILIP PHIRI	F	MALIPA	"	995 88026		P. Phiri
12	SARA ZULU	F	CHENZYA	"			S. Zulu
13	THOMAS PHIRI	F	CHENZYA	"			T. Phiri
14	MARAT ZULU	F	NYAMABENDE	"			M. Zulu
15	ALICE ZULU	F	"	"			A. Zulu
16	MARIDATH PHIRI	F	"	"			M. Phiri
17	ELIZABETH ZULU	F	"	"			E. Zulu
18	ELIZABETH TEMBO	F	"	"			E. Tembo
19	MURIEL ZULU	F	"	"			M. Zulu
20	ALICE ZULU	F	"	"			A. Zulu
21	ATAZZO TEMBO	F	CHENZYA	"			A. Tembo

PETAUKE DISTRICT
ATTENDANCE LIST FOR THE PLUP
COMMUNITY MEETING

VENUE: Sanjaya (School) Zone DATE: 21/04/2022

SNO.	NAME	GENDER (M/F)	VILLAGE/DESIGNATION	DISTRICT	CONTACT NO.	EMAIL ADDRESS	SIGNATURE
1	ELINA TEMBO	F	KAMBILIKA	PETAUKE	975284952		E. Tembo
2	CATHERINE PHIRI	F	KAMBILIKA	"	972054661		C. Phiri
3	ROSEMARY ZULU	F	MALIPA	"	975321510		R. Zulu
4	CATHERINE SANJAYA	F	MUNIMBA	"	97789111		C. Sanjaya
5	WILLIAM ZULU	M	SANJAYA School	"	975130952		W. Zulu
6	WILLIAM ZULU	M	Kaulo	"			W. Zulu
7	WILLIAM ZULU	M	KAMBILIKA	"	995 88026		W. Zulu
8	THOMAS TEMBO	F	P. J. C	PETAUKE	97500526		T. Tembo
9	SIGEBE MUMBA	M	T.S.P	PETAUKE	97711111		S. Mumba
10	MURIEL PHIRI	F	PETAUKE Town Council	PETAUKE	97711111		M. Phiri
11	Kambike Saml	F	FOREST	PETAUKE	97711111		K. Saml
12	ELIZABETH PHIRI	F	PETAUKE Town Council	PETAUKE	97711111		E. Phiri
13	WILLIAM PHIRI	M	LUSANJAYA Town Council	LUSANJAYA	972213663		W. Phiri
14	NGAMBI BERNARD	M					N. Bernard

PETAUKE DISTRICT
ATTENDANCE LIST FOR THE PLUP
COMMUNITY MEETING

VENUE: SANJAMA DATE: 21/04/22

SNO.	NAME	GENDER (M/F)	VILLAGE/DESIGNATION	DISTRICT	CONTACT NO.	EMAIL ADDRESS	SIGNATURE
1	MILLYAMA KUMWIKWA	F	CHENZYA				
2	ELINA ZULU	F	CHENZYA	PETAUKE			
3	MIMEXO PHIRI	F	"	"			
4	MAGREI LUNGU	F	"	"			
5	TIKULIKUMI PHIRI	F	NYAUBE	"			
6	CHARITY ZULU	F	MALIMA	"			
9	BENACATA TEMBA	F	NYAUBE	"			
8	CHRISTINA TEMBA	F	MANIHIMBI	"			
9	AILEASI ZULU	F	"	"			
10	JISA ZULU	F	MBAKALUNGU	"			
11	YASI DAKA	F	NYAMAHIMBI	"			
12	AILELO PHIRI	F	NYAUBE	"			
13	FLORENCE PHIRI	F	MBAKALUNGU	"			
14	LIDIA ISANDA	F	MALIMA	"	0978 997738		
15	BLESINGI PHIRI	F	MALIMA	"	09710115273		
16	RESINA MWANZA	F	KAULO	"			
17	CHARITY TEMBA	F	MBAKALUNGU	"			
18	MUSA ZULU	F	MALIMA	"			
19	OLIRA DAKA	F	MANIHIMBI	"	0979056095		
20	MOSI SAKALA	F	KAULO	"	0951676860		
21	BSIER DAKA	F	CHENKWE	"	0957 640985		

PETAUKE DISTRICT
ATTENDANCE LIST FOR THE PLUP
COMMUNITY MEETING

VENUE: SANJAMA DATE: 21st APRIL 2022

SNO.	NAME	GENDER (M/F)	VILLAGE/DESIGNATION	DISTRICT	CONTACT NO.	EMAIL ADDRESS	SIGNATURE
1	IRIDA PHIRI	M	MALIMA	PETAUKE			
2	MUSA LUNGU	M	MALIMA	PETAUKE	095461253		
3	MARION TEMBA	M	KAULO	"	0966 257288		
4	IRIDA SHANA	M	"	"			
5	MARION LUNGU	M	KAULO	PETAUKE	0936443301		
6	ENOCK LUNGU	M	KAULO	PETAUKE	0978218010		
7	JOSEPH PHIRI	M	KAULO	PETAUKE	0957506728		
8	CHARIS ZULU	M	KABWIKI	"	0977242221		
9	SANSO TEMBA	M	"	"			
11	MARGOSI SAKALA	M	KAULO	"	0954 610565		
12	MUSA PHIRI	F	MALIMA	"			
13	MARIALA DAKA	F	"	"			
14	ESTER MUMBA	F	MALIMA	"			
15	AFFINA CHAWA	F	KAULO	"			
16	FLORENCE LUNGU	F	KAULO	"			
17	ELENI SAKALA	F	KAULO	"			
18	IRIDA X DAKA	F	NYAMAHIMBI	"			
19	PATRICIA TEMBA	F	"	"			
20	NELYA DAKA	F	KAULO	"			
21	AYELINA LUNGU	F	KAULO	"			
22	JUDITH MWANZA	F	NYAMAHIMBI	"			

PETAUKE DISTRICT
ATTENDANCE LIST FOR THE PLUP
COMMUNITY MEETING

VENUE: SANJAMA DATE: 21st APRIL 2022

SNO.	NAME	GENDER (M/F)	VILLAGE/DESIGNATION	DISTRICT	CONTACT NO.	EMAIL ADDRESS	SIGNATURE
1	FANUEL ZULU	m	MALIMA				
2	THEOPHILUS TEMBO	m	MABANIKWA	PETAUKE			
3	BREK TEMBO	m	MALUKWA	PETAUKE	0977283391		F ZULU
4	WILSON PHIRI	m	MALIMA	PETAUKE	0953026057		T. Tembo
5	LYON PHIRI	m	MASHIMBA	"	0972467330		E. Tembo
6	LEMERANI PHIRI	m	NYAMABENGE	"			PHIRI
7	AVALATI TEMBO	m	NYAMABENGE	"			
8	ASELE MUMBA	m	NYAMAMUMBIH	"			
9	EVERSON LUNGU	m	CHENKWE	"			
10	STEPHEN PHIRI	m	MIBAKALUNGU	"			A. Zamba
11	HANDREUS TEMBO	m	MANKWA	"	0990 852183		
12	CHARLES TEMBO	m	MASHIMBA	"	0958 825044		
13	DAMIANUS ZULU	m	CHENKWE	"	0952213535		A. Zamba
14	JOSEPH SAKALA	m	NYAMABENGE	"			
15	MURRAY LUNGU	m	KAWLO	"			
16	ASATI LUNGU	m	CHENKWE	"			
17	NYAMBA LUNGU	m	CHENKWE	"	0770 595615		
18	LUNGILAN ZULU	m	NYAMBA	"	0977 432763		
19	MASIA PHIRI	m	CHANGA	"			
20	SHADREK MUMBA	m	MALIMA	"			M. P. Z...
21	EDWIN MUSEMBA	m	MALIMA	"			S. Mumba

PETAUKE DISTRICT
ATTENDANCE LIST FOR THE PLUP
COMMUNITY MEETING

VENUE: SANJAMA DATE: 21st APRIL 2022

SNO.	NAME	GENDER (M/F)	VILLAGE/DESIGNATION	DISTRICT	CONTACT NO.	EMAIL ADDRESS	SIGNATURE
1	HARISON TEMBO	m	P.D.A	PETAUKE	0971140240		
2	DAVIDSON DAKA	m	MASHIMBA	PETAUKE			
3	JACOBSON TEMBO	m	"	"	0977 242554		
4	GEOPERS BANDA	m	NYAMBA	PETAUKE	0977283626		
5	THEOPHILUS MBELE	m	KWENGE	PETAUKE	0976443720		
6	INDIA PHIRI	m	MASHIMBA	"			
7	NAD BANDA	m	MALIMA	"	0734 493649		
8	LAURENSI TEMBO	m	MALIMA	"			
9	EDWIN TEMBO	m	NYAMBA	"	0979543674		
10	MWOKWAZ PHIRI	m	KWENGE	"	0974905607		
11	WILSON PHIRI	m	MALIMA	"	0974905607		
12	YESAYA LUNGU	m	MOROGA	"	0974905607		
13	ANTON MWANZAR	m	KABANIKWA	"			
14	SAMUEL MUMBA	m	MALIMA	"			
15	JOSEPH PHIRI	m	MALIMA	"			
16	HARISON LUNGU	m	MALIMA	"			
17	MARTIN ZULU	m	MALIMA	"			
18	JOSEPH TEMBO	m	MIBAKALUNGU	"			
19	NEYSON ZULU	m	MIBAKALUNGU	"			
20	KICHANI KAPPA	m	MALUKWA	"	0971789444		
21	PETER LUNGU	m	KAWLO	"	0772039930		

PETAUKE DISTRICT
ATTENDANCE LIST FOR THE PLUP
COMMUNITY MEETING

VENUE: MANKHUNGWE DATE: 11/04/2022

SNO.	NAME	GENDER (M/F)	VILLAGE/DESIGNATION	DISTRICT	CONTACT NO.	EMAIL ADDRESS	SIGNATURE
107	Kaluba mwanza	F	Jubus	Petauke	0955240089		K. van
108	Cecilia Zulu	F	mankhungwe	Petauke	0772090662		C. Zulu
109	Christina hagu	F	ny nambalika	Petauke	-		Ch
110	Avanda mwanza	F	mankhungwe	Petauke	-		Avanda
111	Eunice phiri	F	nyantalo	Petauke	-		E. phiri
112	Aleti phiri	F	nyantalo	Petauke	-		A. phiri
113	Cecilia phiri	F	mankhungwe	Petauke	-		C. phiri
114	Irvyvalenti Zulu	F	mankhungwe	Petauke	-		Irvyvalenti Zulu
115	Gradice claxa	F	Jubus	Petauke	-		Gradice claxa
116	Elinah tembo	F	mankhungwe	Petauke	0772090376		E. tembo
117	Almash saxala	F	mankhungwe	Petauke	-		Almash saxala
118	Legmah tembo	F	mankhungwe	Petauke	-		Legmah tembo
119	Snya tembo	F	Jubus	Petauke	-		Snya tembo
120	Alice saxala	F	mankhungwe	Petauke	-		Alice saxala
121	Felistus dala	F	mankhungwe	Petauke	-		Felistus dala
122	Mary tembo	F	mankhungwe	Petauke	-		Mary tembo
123	Mwamba saxala	F	mankhungwe	Petauke	-		Mwamba saxala
124	Oliver mwanza	F	ntambalika	Petauke	-		Oliver mwanza
125	Mary saxala	F	ntambalika	Petauke	-		Mary saxala
126	Kandibase mwanza	F	mpwalo	Petauke	-		Kandibase mwanza
127	Clituba mumba	F	mankhungwe	Petauke	-		Clituba mumba

PETAUKE DISTRICT
ATTENDANCE LIST FOR THE PLUP
COMMUNITY MEETING

VENUE: MANKHUNGWE DATE: 11/04/2022

SNO.	NAME	GENDER (M/F)	VILLAGE/DESIGNATION	DISTRICT	CONTACT NO.	EMAIL ADDRESS	SIGNATURE
128	Magdalena mumba	F	mankhungwe	Petauke	-		Magdalena mumba
129	Atelesi saxala	F	mankhungwe	Petauke	-		Atelesi saxala
130	Joyce tembo	F	mankhungwe	Petauke	-		Joyce tembo
131	Naomi hagu	F	mankhungwe	Petauke	-		Naomi hagu
132	Catherine saxala	F	mankhungwe	Petauke	-		Catherine saxala
133	Alice tembo	F	mankhungwe	Petauke	-		Alice tembo
134	Grace phiri	F	mankhungwe	Petauke	-		Grace phiri
135	Zeliza tembo	F	mankhungwe	Petauke	-		Zeliza tembo
136	Rosemary phiri	F	mankhungwe	Petauke	-		Rosemary phiri
137	Chitaya mumba	F	mankhungwe	Petauke	-		Chitaya mumba
138	Lanzi mwanza	F	mankhungwe	Petauke	-		Lanzi mwanza
139	Mary tembo	F	mankhungwe	Petauke	09733861561		Mary tembo
140	Zulu mumba	M	mankhungwe	Petauke	0979640384		Zulu mumba
141	Bicly hagu	M	Jubus	Petauke	0971433941		Bicly hagu
142	Alipha phiri	M	mankhungwe	Petauke	-		Alipha phiri
143	Rodrick tembo	M	Jubus	Petauke	096415597		Rodrick tembo
144	Benson tembo	M	Jubus	Petauke	097419355		Benson tembo
145	Jubus mumba	M	Jubus	Petauke	0975211109		Jubus mumba
146	Mwanza Gaston	M	Jubus	Petauke	0964094078		Mwanza Gaston
147	Knox phumbela	M	mankhungwe	Petauke	0977173632		Knox phumbela
148	Paul phiri	M	mankhungwe	Petauke	-		Paul phiri

PETAUKE DISTRICT
ATTENDANCE LIST FOR THE PLUP
COMMUNITY MEETING

VENUE: Manklungwe DATE: 11/04/2022

SNO.	NAME	GENDER (M/F)	VILLAGE/DESIGNATION	DISTRICT	CONTACT NO.	EMAIL ADDRESS	SIGNATURE
86	Keshas daka	M	mpwalo	petanike	0971085655		R. daka
87	Istom daka	M	manklungwe	petanike	-		I. daka
88	Andlex phiri	M	manklungwe	petanike	-		M. phiri
89	Stephen phiri	M	manklungwe	petanike	097600930		S. phiri
90	Chipanya Daka	M	manklungwe	petanike	-		C. daka
91	Tembo Santos	M	manklungwe	petanike	097054253		S. Santos
92	Tembo Daliso	M	manklungwe	petanike	09774334		D. Daliso
93	Emelina daka	F	manklungwe	petanike	-		E. daka
94	Libiana mmamba	F	manklungwe	petanike	-		L. mmamba
95	Rabbece mmamba	F	manklungwe	petanike	-		R. mmamba
96	Judith phiri	F	manklungwe	petanike	-		J. phiri
97	Grace saxala	F	manklungwe	petanike	-		G. saxala
98	Patricia mmamba	F	manklungwe	petanike	-		P. mmamba
99	Edina mmamba	F	manklungwe	petanike	-		E. mmamba
100	mebo Kammanga	F	manklungwe	petanike	-		M. Kammanga
101	Yelonica mwanza	F	manklungwe	petanike	-		Y. mwanza
102	Ailini mpwalo	F	manklungwe	petanike	-		A. mpwalo
103	Ansia tembo	F	manklungwe	petanike	-		A. tembo
104	Eliza daka	F	manklungwe	petanike	-		E. daka
105	Fsther tembo	F	Jubus	petanike	-		F. tembo
106	Nyawa Mwanza	F	Jubus	petanike	-		N. Mwanza

PETAUKE DISTRICT
ATTENDANCE LIST FOR THE PLUP
COMMUNITY MEETING

VENUE: DATE:

SNO.	NAME	GENDER (M/F)	VILLAGE/DESIGNATION	DISTRICT	CONTACT NO.	EMAIL ADDRESS	SIGNATURE
65	patricia mwanza	F	Jubus	petanike	-		P. mwanza
66	Emelia saxala	F	Jubus	petanike	-		E. saxala
67	philimon banda	M	mubinda	petanike	0953070602		P. banda
68	Fabran mwanza	M	ntambalika	petanike	0977758402		F. mwanza
69	Picken tembo	M	Jubus	petanike	0776169602		P. tembo
70	Allan saxala	M	mpwalo	petanike	0979973898		A. saxala
71	Mabvuto mbewe	M	nyansitongo	petanike	0770345958		M. mbewe
72	Samson ngubube	M	Jubus	petanike	0770756276		S. ngubube
73	Abraham saxala	M	mpwalo	petanike	0957641638		A. saxala
74	Nsangu banda	M	manklungwe	petanike	0961551179		N. banda
75	Joseph saxala	M	manklungwe	petanike	0954632216		J. saxala
76	Weluzani phiri	M	mpwalo	petanike	095543590		W. phiri
77	Morris Zulu	M	nyantala	petanike	-		M. Zulu
78	John maye	M	nyantala	petanike	-		J. maye
79	Vilipo banda	M	mpwalo	petanike	-		V. banda
80	Frank saxala	M	manklungwe	petanike	096768937		F. saxala
81	Josias mwanza	M	manklungwe	petanike	-		J. mwanza
82	Oscar yambato	M	manklungwe	petanike	0953124499		O. yambato
83	landiani daka	M	manklungwe	petanike	0953071868		L. daka
84	Musa tembo	M	manklungwe	petanike	-		M. tembo
85	Juvensio Zulu	M	manklungwe	petanike	-		J. Zulu

PETAUKE DISTRICT
ATTENDANCE LIST FOR THE PLUP
COMMUNITY MEETING

VENUE: DATE:

SNO.	NAME	GENDER (M/F)	VILLAGE/DESIGNATION	DISTRICT	CONTACT NO.	EMAIL ADDRESS	SIGNATURE
44	Kaluba Tembo	F	manakungwe	petauke	-		[Signature]
45	Sabina Tembo	F	ntambalika	petauke	-		[Signature]
46	Jenipher Saxala	F	Julus	petauke	-		[Signature]
47	Ennice Inga	F	manakungwe	petauke	-		[Signature]
48	Annale mumba	F	manakungwe	petauke	-		[Signature]
49	Cathreen mumba	F	manakungwe	petauke	-		[Signature]
50	Diness Inga	F	manakungwe	petauke	-		[Signature]
51	Mwape Mwanza	F	manakungwe	petauke	096664477		[Signature]
52	Matildah tembo	F	manakungwe	petauke	-		[Signature]
53	Matildah banda	F	manakungwe	petauke	096759626		[Signature]
54	Christina mumba	F	manakungwe	petauke	-		[Signature]
55	Agness tembo	F	manakungwe	petauke	-		[Signature]
56	Juliana phiri	F	manakungwe	petauke	-		[Signature]
57	Edah Saxala	F	manakungwe	petauke	-		[Signature]
58	Nkhumbwi daka	F	manakungwe	petauke	-		[Signature]
59	Ngoza mumba	F	manakungwe	petauke	-		[Signature]
60	Christine tembo	F	manakungwe	petauke	-		[Signature]
61	Matildah tembo	F	manakungwe	petauke	-		[Signature]
62	Jempher mwanza	F	manakungwe	petauke	095516719		[Signature]
63	Judith mwanza	F	Julus	petauke	-		[Signature]
64	Esther daka	F	Julus	petauke	-		[Signature]

PETAUKE DISTRICT
ATTENDANCE LIST FOR THE PLUP
COMMUNITY MEETING

VENUE: DATE:

SNO.	NAME	GENDER (M/F)	VILLAGE/DESIGNATION	DISTRICT	CONTACT NO.	EMAIL ADDRESS	SIGNATURE
22	Jephthah phiri	M	manakungwe	petauke	-		[Signature]
23	Agness Daka	F	manakungwe	petauke	-		[Signature]
24	Hellen Tembo	F	manakungwe	petauke	0953219816		[Signature]
25	Josphat phiri	M	Julus	petauke	0955625509		[Signature]
26	Chande Zulu	M	nyamitanga	petauke	0954645004		[Signature]
27	Michael phiri	M	ntambalika	petauke	-		[Signature]
28	Kephas mwanza	M	Julus	petauke	-		[Signature]
29	Besam mumba	M	Julus	petauke	-		[Signature]
30	Ailax Zulu	M	mulinda	petauke	-		[Signature]
31	Adam banda	M	Julus	petauke	-		[Signature]
32	Viness mwanza	F	Julus	petauke	-		[Signature]
34	Esther Saxala	F	Julus	petauke	-		[Signature]
35	Lia banda	F	Julus	petauke	-		[Signature]
36	Agness mwanza	F	Julus	petauke	-		[Signature]
37	Nyawa mwanza	F	Julus	petauke	-		[Signature]
38	Esneya langudaka	F	mulinda	petauke	-		[Signature]
39	Lenasi Tembo	F	manakungwe	petauke	-		[Signature]
40	Alice phiri	F	mulinda	petauke	-		[Signature]
41	Esther mwanza	F	mulinda	petauke	0955949305		[Signature]
42	Justina mwanza	F	ntambalika	petauke	-		[Signature]
43	Mervis Inga	F	ntambalika	petauke	-		[Signature]

PETAUKE DISTRICT
ATTENDANCE LIST FOR THE PLUP
COMMUNITY MEETING

VENUE: MANKHUNGWE DATE: 11.04.2022

SNO.	NAME	GENDER (M/F)	VILLAGE/DESIGNATION	DISTRICT	CONTACT NO.	EMAIL ADDRESS	SIGNATURE
1	SHADRECK Zulu	M	mankhungwe	Petauke	0975861901		Zulu
2	Edson Inyanga	M	mankhungwe	Petauke	0970622322		E. Inyanga
3	Simon DAKA	M	mankhungwe	Petauke	096101634		Simon
4	Rabson BANDA	M	mankhungwe	Petauke	0950029597		Rabson
5	Gibson saxala	M	mankhungwe	Petauke	0963735667		Gibson
6	Mengani Inyanga	M	Inyanga	Petauke	0979594021		Mengani
7	Lemianani mwanza	M	mankhungwe	Petauke	0973953920		Lemianani
8	Michael Tembo	M	Inyanga	Petauke	096245674		P. Daka
9	patrick DAKA	M	mankhungwe	Petauke	097877344		M. Phiri
10	Morgan phiri	M	Kapindo	Petauke	0956		P. Zulu
11	Primala Zulu	M	Kapindo	Petauke	0953502916		J. Mumba
12	Joseph mumba	M	Abram	Petauke	-		A. Mumba
13	Acklus mwanza	M	Kamono	Petauke	-		X. ngalala
14	Kampata ngulube	M	mankhungwe	Petauke	095460279		S. Phiri
15	Shadreck phiri	M	mpwalo	Petauke	-		P. Daka
16	patrick DAKA	M	mankhungwe	Petauke	-		C. Inyanga
17	Christina Inyanga	F	Mulinda	Petauke	-		C. saxala
18	Charity saxala	F	mankhungwe	Petauke	-		B. Daka
19	Rosemary DAKA	F	nyamitongo	Petauke	-		P. Inyanga
20	paul Inyanga	M	mankhungwe	Petauke	-		A. Inyanga
21	Acklina Inyanga	F	Kamono K	Petauke	-		

PETAUKE DISTRICT
ATTENDANCE LIST FOR THE PLUP
COMMUNITY MEETING

VENUE: DATE:

SNO.	NAME	GENDER (M/F)	VILLAGE/DESIGNATION	DISTRICT	CONTACT NO.	EMAIL ADDRESS	SIGNATURE
149	Jackson Inyanga	M	mankhungwe	Petauke	-		L. Inyanga
150	Kamwavi Tembo	M	Inyanga	Petauke	097272022		K. Inyanga
151	Kennedy Inyanga	M	mankhungwe	Petauke	-		K. Inyanga
152	Ingasio mwalu	M	Mulinda	Petauke	0973018259		J. Inyanga
153	Saxala Tembo	M	mankhungwe	Petauke	-		S. Inyanga
154	Inyanga Gibson	M	ntambalixa	Petauke	095133372		M. Tembo
155	Moffat Tembo	M	ntambalixa	Petauke	0956224		F. Inyanga
156	Fadalese Inyanga	F	mankhungwe	Petauke	-		F. Inyanga
157	Felesia mumba	F	mankhungwe	Petauke	-		A. Inyanga
158	Ailini Inyanga	F	ntambalixa	Petauke	-		S. Inyanga
159	Sege saxala	F	ntambalixa	Petauke	-		M. Inyanga
160	ngawa Inyanga	F	ntambalixa	Petauke	-		M. Inyanga
161	Margret daka	F	ntambalixa	Petauke	-		E. Zulu
162	Elizabeth Zulu	F	mankhungwe	Petauke	-		A. Inyanga
163	Ahness Tembo	F	mankhungwe	Petauke	-		C. Inyanga
164	Cecilia Tembo	F	Inyanga	Petauke	-		A. Inyanga
165	Agness phiri	M	ntambalixa	Petauke	-		N. Zulu
166	Aifosi Inyanga	F	Mulinda	Petauke	-		B. Inyanga
167	Nelia Zulu	F	Inyanga	Petauke	0970652799		M. Inyanga
168	Brenda mumba	F	mankhungwe	Petauke	-		
169	Margret mwanza	F	mankhungwe	Petauke	-		

- 170 Jibelo tembo m ntantambalika
 171 mwaba tembo m manxlungwe
 172 nevers tembo m manxlungwe
 173 phiri Clutele m ntambalika
 174 Tembo lenson m ntambalika
 175 Blackson tembo m mpwalo
 176 Florence tembo F mpwalo
 177 Plun saxala F Julius
 178 precus mwanza F ntambalika
 179 Grace mwanza F ntambalika
 180 phaides hingu F Julius
 181 Rosemary hingu F Julius
 182 Godfrey mumba m Julius
 183 Acklas mwanza m Julius
 184 Peter saxala m ntambalika
 185 peter phiri m manxlungwe
 186 Given tembo F manxlungwe
 187 Selina baruda F manxlungwe
 188 nyangu mumba F manxlungwe
 189 Alinesa saxala F manxlungwe
 200 Kambohe Saul M petauke Town Council

PETAUKE DISTRICT
ATTENDANCE LIST FOR THE PLUP
COMMUNITY MEETING

VENUE: CHIRANDA DATE: 12/04/22

SNO.	NAME	GENDER (M/F)	VILLAGE/DESIGNATION	DISTRICT	CONTACT NO.	EMAIL ADDRESS	SIGNATURE
1	ANGISHEFI PHIRI	M	CHIMIENJE	PETAUKE	0970737003	—	A. Phiri
2	STACKSON MWANZA	M	GIDION	PETAUKE	0977698395	—	S. mwanza
3	LUNISSAN SAKAZA	M	NYAKUMKA	PETAUKE	—	—	L. sakaza
4	MAUNDU ZULU	M	NANIKWE	PETAUKE	0761942070	—	M. Zulu
5	JACKSON ZULU	M	GIDION	PETAUKE	0975232971	—	T. Zulu
6	PENGESANI TEMBO	M	CHIMIENJE	PETAUKE	—	—	P. Tembo
7	SILVESTER ZULU	M	CHIMIENJE	PETAUKE	—	—	S. Zulu
8	KAMATISA MWANZA	M	ZUMANI	PETAUKE	—	—	K. mwanza
9	SIZA PHIRI	M	ZUMANI	PETAUKE	—	—	S. phiri
10	ABRON PHIRI	M	GADISAN	PETAUKE	095020535	—	ABRON
11	LAMECK MUMBA	M	NANIKWE	PETAUKE	—	—	L. Mumba
12	PETROS LAALIA	M	NYAKUMKA	PETAUKE	095461691	—	P. Lungu
13	SHUPA TEMBO	M	GIDION	PETAUKE	—	—	S. Tembo
14	ASTON MWANZA	M	NANIKWE	PETAUKE	—	—	A. Mwanza
15	TEMBO TEIKIANI	M	GIDION	PETAUKE	097054296	—	TEMBO
16	ZULU AZELE	M	GAMBISAN	PETAUKE	—	—	Z. Zulu
17	IKWELL NJOBVA	M	NZIPALA	PETAUKE	0950853019	—	I. NJOBVA
18	PAYANI NJOBVA	M	NYAKUMKA	PETAUKE	09550806539	—	PAYANI
17	PONSİYANO BAZA	M	CHIMIENJE	PETAUKE	0953135025	—	P. BAZA
20	KONDWELAN PHIRI	M	GIDION	PETAUKE	0953518057	—	K. phiri
21	SIAPSON MUMBA	M	GIDION	PETAUKE	0953104982	—	S. Mumba

PETAUKE DISTRICT
ATTENDANCE LIST FOR THE PLUP
COMMUNITY MEETING

VENUE: CHIZANIDA DATE: 12/04/22

SNO.	NAME	GENDER (M/F)	VILLAGE/DESIGNATION	DISTRICT	CONTACT NO.	EMAIL ADDRESS	SIGNATURE
22	MABUYO ZULU	M	GIBION	PETAUKE	0953336182	-	M Zulu
23	MALIZIYA ZULU	M	CHIMTENJE	PETAUKE	-	-	M Zulu
24	LEMEKANI BANDA	M	MZIPULA	PETAUKE	-	-	L Banda
25	PLAYSON ZULU	M	CHIMTENJE	PETAUKE	-	-	P. Zulu
26	MAMBO PHIRI	M	GANDISANI	PETAUKE	-	-	M PHIRI
27	ISAAC BAKA	M	GANDISANI	PETAUKE	095596305	-	I. BAKA
28	AVALAH MWANZA	M	NANINWE	PETAUKE	-	-	A. MWANZA
29	IBACK SAKALA	M	GIBION	PETAUKE	-	-	A. MWANZA
30	JACKSON TEMBO	M	GANDISANI	PETAUKE	-	-	J. SAKALA
31	AMSON MWANZA	M	GANDISANI	PETAUKE	-	-	F TEMBO
32	MOFATI MWANZA	M	CHIMTENJE	PETAUKE	0929231423	-	M. MWANZA
33	JAMES PHIRI	M	GIBION	PETAUKE	-	-	M. MWANZA
34	HANDLE LUNGU	M	GANDISANI	PETAUKE	-	-	H. LUNGU
35	ACKIM ZULU	M	GIBION	PETAUKE	-	-	A. Zulu
36	JAMES PHIRI	M	GIBION	PETAUKE	-	-	J. PHIRI
37	ALIAS TEMBO	M	GANDISANI	PETAUKE	-	-	I. TEMBO
38	MOSCS PHIRI	M	GIBION	PETAUKE	-	-	M. PHIRI
39	EDISON SAKALA	M	NANINWE	PETAUKE	-	-	E. SAKALA
40	PETER MUMBA	M	CHIMTENJE	PETAUKE	-	-	P. Mumba
41	BUSA BAKA	M	MZIPULA	PETAUKE	-	-	B. BAKA
42	PETER PHIRI	M	MZIPULA	PETAUKE	-	-	P. Phiri

PETAUKE DISTRICT
ATTENDANCE LIST FOR THE PLUP
COMMUNITY MEETING

VENUE: CHIZANIDA DATE: 12/04/22

SNO.	NAME	GENDER (M/F)	VILLAGE/DESIGNATION	DISTRICT	CONTACT NO.	EMAIL ADDRESS	SIGNATURE
43	MWANZA DENESI	M	CHIMTENJE	PETAUKE	0952958287	-	D. MWANZA
44	KEPHACE PHIRI	M	ZUMANI	PETAUKE	0954104919	-	K. PHIRI
45	MOSES SAKALA	M	NYAKUMWA	PETAUKE	0960324819	-	M. SAKALA
46	ANDASON TEMBO	M	CHIMTENJE	PETAUKE	-	-	A. TEMBO
47	RADSON PHIRI	M	GIBION	PETAUKE	0957433507	-	R. PHIRI
48	IBAN LUNGU	M	CHIMTENJE	PETAUKE	-	-	I. LUNGU
49	BLACKSON TEMBO	M	GANDISANI	PETAUKE	0956841333	-	B. TEMBO
50	GEORGEY PHIRI	M	CHIMTENJE	PETAUKE	095552513	-	G. PHIRI
51	BLASKO SAKALA	M	NYANOMA	PETAUKE	0954552534	-	B. SAKALA
52	KEPHACE ZULU	M	GIBION	PETAUKE	0974562357	-	K. Zulu
53	PETER PHIRI	M	ZUMANI	PETAUKE	0973057553	-	P. PHIRI
54	BLADON ZULU	M	GIBION	PETAUKE	-	-	B. Zulu
55	ZULU GODWALL	M	GIBION	PETAUKE	-	-	Z. Zulu
56	MABUYO SAKALA	M	MZIPULA	PETAUKE	-	-	M. SAKALA
57	LAMECK ZULU	M	GIBION	PETAUKE	0955682143	-	L. Zulu
58	ADSON MWANZA	M	CHIMTENJE	PETAUKE	-	-	A. MWANZA
59	SPESEA PHIRI	M	CHIMTENJE	PETAUKE	-	-	S. PHIRI
60	ALICK SAKALA	M	GANDISANI	PETAUKE	-	-	A. SAKALA
61	LOCK TEMBO	M	NYANOMA	PETAUKE	-	-	L. TEMBO
62	DIYELG BAKA	M	CHIMTENJE	PETAUKE	-	-	D. BAKA
63	ANDFORB LUNGU	M	NYAKUMWA	PETAUKE	-	-	A. LUNGU

PETAUKE DISTRICT
ATTENDANCE LIST FOR THE PLUP
COMMUNITY MEETING

VENUE: CHIRANDA DATE: 12/04/22

SNO.	NAME	GENDER (M/F)	VILLAGE/DESIGNATION	DISTRICT	CONTACT NO.	EMAIL ADDRESS	SIGNATURE
64	LACKSON PHIRI	M	GANDISANI	PETAUKE	0973097235	-	Zulu
65	ADAM BANDA	M	INYUTA	PETAUKE		-	-
66	ISAAC ZULU	M	NYAKUMWA	PETAUKE	0977707050	-	I. Zulu
67	Albach K Teub Headman	M	Gandisani	PETAUKE	0966038450	-	I. Zulu
68	SHUTASI Zulu	M	NYANOKA	PETAUKE	0972851377	-	A. Zulu
69	ACKSON Zulu	M	ZUMANI	PETAUKE	0970545612	-	A. Zulu
70	ALFRED MUMBA	M	GIDION	PETAUKE	0975700535	-	A. Zulu
71	MAJOR MWANZA	M	GIDION	PETAUKE	0953305811	-	A. Zulu
72	PREBY Zulu	M	CHIMTENJE	PETAUKE	0953078284	-	F. Zulu
73	LAI FORD ZULU	M	GANDISANI	PETAUKE	09729114786	-	Z. Zulu
74	KALENGO BANDA	M	CHIMTENJE	PETAUKE	0953212895	-	K. Banda
75	TEMBO MOYO	M	GIDION	PETAUKE	0957039459	-	T. Moyo
76	INOCK Zulu	M	GIDION	PETAUKE		-	I. Zulu
77	TEMBO MZIPULA	M	MZIPULA	PETAUKE		-	M. Tembo
78	LUNGU ACKSAD	M	NYAKUMWA	PETAUKE	0957643557	-	A. Lungu
79	KANDIGO SAKALA	M	GANDISANI	PETAUKE	0970884355	-	K. Sakala
80	TENSON Zulu	M	GIDION	PETAUKE		-	T. Zulu
81	SIANDI WELI PHIRI	M	MZIPULA	PETAUKE	0953529082	-	S. Phiri
82	LAI FORD MWANZA	M	GIDION	PETAUKE		-	L. Zulu
83	ARLEN PHIRI	M	NYANOKA	PETAUKE	0979636139	-	A. Phiri
84	LUNGU KAUSOE	M	NYANOKA	PETAUKE	0978956752	-	L. H.

PETAUKE DISTRICT
ATTENDANCE LIST FOR THE PLUP
COMMUNITY MEETING

VENUE: DATE:

SNO.	NAME	GENDER (M/F)	VILLAGE/DESIGNATION	DISTRICT	CONTACT NO.	EMAIL ADDRESS	SIGNATURE
85	DOREEN ZULU	F	GIDION	PETAUKE			
86	KESLINI SAKALA	F	GIDION	PETAUKE			
87	JUDITH SAKALA	F	GIDION	PETAUKE			
88	DADALENA PHIRI	F	GIDION	PETAUKE			
89	TAVYALILE PHIRI	F	CHITENJE	PETAUKE			
90	EDA MWANZA	F	INYUTA	PETAUKE			
91	NANIGMI MWANZA	F	INYUTA	PETAUKE			
92	ESNANI MUMBA	F	NYAKUMWA	PETAUKE			
93	MARIA TEMBO	F	NYAKUMWA	PETAUKE			
94	ESTA TEMBO	F	CHITENJE	PETAUKE			
95	MAGLET DAKA	F	CHITENJE	PETAUKE			
96	ELINA DAKA	F	GANDISANI	PETAUKE			
97	MALILA MWANZA	F	INYUTA	PETAUKE			
98							
99							
100							

PETAUKE DISTRICT
ATTENDANCE LIST FOR THE PLUP
COMMUNITY MEETING

VENUE: DATE:

SNO.	NAME	GENDER (M/F)	VILLAGE/DESIGNATION	DISTRICT	CONTACT NO.	EMAIL ADDRESS	SIGNATURE
101	FALE'S JOBUU	F	ZIPULA	PETAUKE			
102	ENES MUMBA	F	ZIPULA	PETAUKE			
103	CHARRET SAKALA	F	ZIPULA	PETAUKE			
104	AFALED DAKA	F	GANDISAN	PETAUKE			
105	CHAKHILISINA MWANZA	F	INUTA	PETAUKE			
106	ACKLINA ZULU	F	GANDISAN	PETAUKE			
107	LEKESIN TEMBO	F	NYANEMA	PETAUKE			
108	MALINET MWANZA	F	INUTA	PETAUKE			
109	ALISI TEMBO	F	INUTA	PETAUKE			
110	AFFINA MWANZA	F	CHITENSE	PETAUKE			
112	ASINELI ZULU	F	CHITENSE	PETAUKE			
113	MUNYADE ZULU	F	CHITENSE	PETAUKE			
114	GIESI PHIRI	F	NYANEMA	PETAUKE			
115	KESILIN PHIRI	F	NYANOK	PETAUKE			
116	MAGLET TEMBO	F	ZUMAN	PETAUKE			
117	TISALE TEMBO	F	NYANEMA	PETAUKE			
118	CHELINA ZULU	F	CHITENSE	PETAUKE			
119	CHILUBA ZULU	F	CHITENSE	PETAUKE			
120	LOICE TEMBO	F	ZIPULA	PETAUKE			
121	MAGLET MWANZA	F	ZIPULA	PETAUKE			
122	AYELINA ZULU	F	NYANEMA	PETAUKE			

PETAUKE DISTRICT
ATTENDANCE LIST FOR THE PLUP
COMMUNITY MEETING

VENUE: DATE:

SNO.	NAME	GENDER (M/F)	VILLAGE/DESIGNATION	DISTRICT	CONTACT NO.	EMAIL ADDRESS	SIGNATURE
	Zulu MELI	F	INUTA	PETAUKE			
	LAVINES PHIRI	F	INUTA	PETAUKE			
	SOFIA MUMBA	F	CHITENSE	PETAUKE			
	MWANIDA Zulu	F	GANDISAN	PETAUKE			
	JOICE MUMBA	F	GANDISAN	PETAUKE			
	AINELI PHIRI	F	GINDI	PETAUKE			
	JOICE TEMBO	F	INUTA	PETAUKE			
	LECHO ZULU	F	ZIPULA	PETAUKE			
	CHIKALARA Zulu	F	INUTA	PETAUKE			
	FELIDA TEMBO	F	INUTA	PETAUKE			
	AYELINA MWANZA	F	INUTA	PETAUKE			
	ACKLINA TEMBO	F	ZIPULA	PETAUKE			
	JOICE PHIRI	F	CHITENSE	PETAUKE			
	EMELIA PHIRI	F	CHITENSE	PETAUKE			
	NAWOMI TEMBO	F	NYAKUMWA	PETAUKE			
	LAYZI DAKA	F	GANDISAN	PETAUKE			
	BESINAI Zulu	F	GANDISAN	PETAUKE			
	ALENIA MWANZA	F	GANDISAN	PETAUKE			
	TASILA PHIRI	F	NYAKUMWA	PETAUKE			
	JUDITH PHIRI Zulu	F	ZUMAN	PETAUKE			
	PULICA MUMBA	F	ZUMAN	PETAUKE			

PETAUKE DISTRICT
ATTENDANCE LIST FOR THE PLUP
COMMUNITY MEETING

VENUE: DATE:

SNO.	NAME	GENDER (M/F)	VILLAGE/DESIGNATION	DISTRICT	CONTACT NO.	EMAIL ADDRESS	SIGNATURE
	GLECE TEMBO	F	CHITENJE	PETAUKE			
	AILES BANDA	F	CHITENJE	PETAUKE			
	JENIPHA LUNGU	F	GANDISAN	PETAUKE			
	MELI MWANZA	F	GANDISAN	PETAUKE			
	FALES LUNGU	F	GINDI	PETAUKE			
	DOLA MWANZA	F	NYAKUMWA	PETAUKE			
	A TELEDI MWANZA	F	ZUMAN	PETAUKE			
	TIKABE TEMBO	F	ZUMAN	PETAUKE			
	AEELIDA MUMBA	F	GINDI	PETAUKE			
	ATINEL MUMBA	F	ZUMAN	PETAUKE			
	VAILET BANDA	F	GANDISAN	PETAUKE			
	ETINDLA TEMBO	F	NYANOKA	PETAUKE			
	FATINES MWANZA	F	CHITENJE	PETAUKE			
	AJILIN DAKA	F	CHITENJE	PETAUKE			
	JITAMENJI MWANZA	F	ZIPULA	PETAUKE			
	MALIBO ZULU	F	GANDISAN	PETAUKE			
	MUSALEPO LUNGU	F	ZIPULA	PETAUKE			
	LUTE ZULU	F	INUTA	PETAUKE			
	ALANDA ZULU	F	INUTA	PETAUKE			
	ADALA MUMBA	F	INUTA	PETAUKE			
	JUDITH ZULU	F	INUTA	PETAUKE			

PETAUKE DISTRICT
ATTENDANCE LIST FOR THE PLUP
COMMUNITY MEETING

VENUE: DATE:

SNO.	NAME	GENDER (M/F)	VILLAGE/DESIGNATION	DISTRICT	CONTACT NO.	EMAIL ADDRESS	SIGNATURE
	MALITA MWANZA	F	INUTA	PETAUKE			
	ZELIDA PHARI	F	CHITENJE	PETAUKE			
	JUDITH TEMBO	F	GANDISAN	PETAUKE			
	SITELIA ZULU	F	INUTA	PETAUKE			
	JENIPHA ZULU	F	INUTA	PETAUKE			
	NGOZA MUMBA	F	INUTA	PETAUKE			
	MWADABWA ZULU	F	INUTA	PETAUKE			
	AKES MWANZA	F	CHITENJE	PETAUKE			
	AIDA DAKA	F	NYAKUMWA	PETAUKE			
	JOICE PHARI	F	ZIPULA	PETAUKE			
	MADDALES SAKALA	F	CHITENJE	PETAUKE			
	BESNANT ZULU	F	NYANEMA	PETAUKE			
	LAVUNES TEMBO	F	NYANOKA	PETAUKE			
	AGINES DAKA	F	GINDIXONI	PETAUKE			
	MELI TEMBO	F	ZIPULU	PETAUKE			
	AFALIA MUMBA	F	ZIPULU	PETAUKE			
	MWAZIONA LUNGU	F	ZUMAN	PETAUKE			
	TIONA TEMBO	F	CHITENJE	PETAUKE			
	Catherine LUNGU	F	INUTA	PETAUKE			
	GRACE SAKALA	F	GANDISAN	PETAUKE			
	FAIDESI SAKALA	F	GINDIXONI	PETAUKE			

**PETAUKE DISTRICT
ATTENDANCE LIST FOR THE PLUP
COMMUNITY MEETING**

VENUE: MATONJE DATE: 13/04/2022

SNO.	NAME	GENDER (M/F)	VILLAGE/DESIGNATION	DISTRICT	CONTACT NO.	EMAIL ADDRESS	SIGNATURE
1	Edina Phiri	F	Matonje	Petauke		Matonje	
2	Felida Lungu	F	Nyanika	Petauke		Nyanika	
3	Tafuwa Banda	F	Nyanza	Petauke		Nyanza	
4	Faurea Daka	F	Nyanika	Petauke		Nyanika	
5	Avanda Banda	F	Nyanika	Petauke		Nyanika	
6	Lekesira Phiri	F	Kasongo	Petauke		Kasongo	
7	Ealesi Kausa	F	Nyanika	Petauke		Nyanika	
8	Estanya Mumba	F	Kasongo	Petauke		Kasongo	
9	Tsimbani Daka	F	Matonje	Petauke	097210555	Matonje	
10	Evelasa Awaka	F	Matonje	Petauke		Nyanika	Banda
11	Zakwe Banda	F	Nyanika	Petauke		Matonje	F. ZULU F. KASONGO
12	Evelasa Zulu	F	Matonje	Petauke		Matonje	
13	Evelasi Kasongo	F	Matonje	Petauke		Matonje	
14	Mwila Tembo	F	Matonje	Petauke		Kasongo	
15	Getosdy Phiri	F	Matonje	Petauke		Matonje	F Banda
16	Juday Tembo	F	Matonje	Petauke		Nyanza	
17	Florence Banda	F	Nyanza	Petauke		Nyanika	
18	Tiana Zulu	F	Nyanika	Petauke		Nyanika	
19	Jesala Tembo	F	Nyanika	Petauke		Nyanza	
20	Charity Mumba	F	Nyanza	Petauke			
21	Nyanika Tembo	F	Nyanza	Petauke			

**PETAUKE DISTRICT
ATTENDANCE LIST FOR THE PLUP
COMMUNITY MEETING**

VENUE: MATONJE DATE: 13/04/2022

SNO.	NAME	GENDER (M/F)	VILLAGE/DESIGNATION	DISTRICT	CONTACT NO.	EMAIL ADDRESS	SIGNATURE
22	Alick Zulu	M	NYANKUWA	PETAUKE	097075191	NYANKUWA	A Zulu
23	FUNLUBANI MWALE	M	MATONJE	PETAUKE	-	MATONJE	F Mumba
24	JOHN NGULUBE	M	NYANZA	PETAUKE	-	NYANZA	
25	NYANISIKU PHIRI	M	NYAMWAI	PETAUKE	095590555	NYAMWAI	N Phiri
26	MICHAEL LUNLU	M	NYANKUWA	PETAUKE	-	NYANKUWA	
27	GEORGE MWAPE	M	NYAMWAI	PETAUKE	-	NYAMWAI	
28	MUMBA MWANZA	M	MATONJE	PETAUKE	-	MATONJE	
29	MAMBO MUMBA	M	NYANZA	PETAUKE	097705747	MATONJE	
30	PETER TEMBO	M	MATONJE	PETAUKE	-	MATONJE	P. TEMBO
31	ALICK MUMBA	M	NYANKUWA	PETAUKE	-	NYANKUWA	A Mumba
32	BRADON PHIRI	M	MATONJE	PETAUKE	0770607050	MATONJE	
33	DAVID PHIRI	M	MATONJE	PETAUKE	0972284613	MATONJE	
34	ELVIS TEMBO	M	MATONJE	PETAUKE	0762664450	MATONJE	
35	TRACKSON TEMBO	M	KASONGO	PETAUKE	-	KASONGO	
36	ANDWEL DAKA	M	NYAMWAI	PETAUKE	-	NYAMWAI	
37	FACKSON ZULU	M	MATONJE	PETAUKE	-	MATONJE	
38	DAVID PHIRI	M	NYAMWAI	PETAUKE	097695085	NYAMWAI	D. Phiri
39	ABEL TEMBO	M	MATONJE	PETAUKE	095349009	MATONJE	A. Tembo
40	NICOLA PAPER	M	CHIBALE	PETAUKE	097422211	CHIBALE	N. PAPER
41	KHEYSON TEMBO	M	MATONJE	PETAUKE	-	MATONJE	K. Tembo
42	IWELL LUNLU	M	MATONJE	PETAUKE	0976980214	MATONJE	I. Lunlu

PETAUKE DISTRICT
ATTENDANCE LIST FOR THE PLUP
COMMUNITY MEETING

VENUE: MATONJE DATE: 13/04/2022

SNO.	NAME	GENDER (M/F)	VILLAGE/DESIGNATION	DISTRICT	CONTACT NO.	EMAIL ADDRESS	SIGNATURE
43	YOBE MUMBA	M	JULIUS KAMPENDE	PETAUKE	-	JULIUS K	J. Mumba
44	ALIFORD PHIRI	M	KASONGO	PETAUKE	-	KASONGO	A. Phiri
45	LIMBIKANI LUNGU	M	MATONJE	PETAUKE	-	MATONJE	L. Lungu
46	EMMANUEL TEMBO	M	NYANKUNWA	PETAUKE	-	NYANKUNWA	
47	MWANZA LUNGU	M	NYANKUNWA	PETAUKE	-	NYANKUNWA	
48	YOBE BANDA	M	MATONJE	PETAUKE	-	MATONJE	
49	RECHARD LUNGU	M	NYAMWAI	PETAUKE	-	NYAMWAI	Lungu
50	LEVISON TEMBO	M	NYANZA	PETAUKE	0976923066	NYANZA	L. Tembo
61	JWELL PHIRI	M	MATONJE	PETAUKE	0977481564	MATONJE	J. Phiri
62	LACTO PHIRI	M	MATONJE	PETAUKE	097406960	MATONJE	L. Phiri
63	GREVARYO TEMBO	M	MATONJE	PETAUKE	-	MATONJE	G. Tembo
64	ZACHARIAH TEMBO	M	MATONJE	PETAUKE	076667118	MATONJE	Z. Tembo
65	MWANZA TEMBO	M	MATONJE	PETAUKE	07725376	MATONJE	M. Tembo
66	JOSEPH PHIRI	M	MATONJE	PETAUKE	077253861	MATONJE	J. Phiri
67	MSHOPE PHIRI	M	MATONJE	PETAUKE	0774443879	MATONJE	M. Phiri
68	CAPHAS LUNGU	M	MATONJE	PETAUKE	076902940	MATONJE	C. Lungu
69	PETER PHIRI	M	MATONJE	PETAUKE	-	MATONJE	P. Phiri
70	ALICK NJOBVU	M	MATONJE	PETAUKE	-	MATONJE	A. Njobvu
71	YELEISANI BANDA	M	MATONJE	PETAUKE	077731006	MATONJE	Y. Banda
72	BITWEL ALICK NJOBVU	M	MATONJE	PETAUKE	0774815168	MATONJE	B. Njobvu
73	SHEDA LUNGU	M	MATONJE	PETAUKE	-	MATONJE	S. Lungu

PETAUKE DISTRICT
ATTENDANCE LIST FOR THE PLUP
COMMUNITY MEETING

VENUE: MATONJE DATE: 13th APRIL 2022

SNO.	NAME	GENDER (M/F)	VILLAGE/DESIGNATION	DISTRICT	CONTACT NO.	EMAIL ADDRESS	SIGNATURE
74	TEMBO ALARGE	M	M'NYANZA	PETAUKE	0962275292	M'NYANZA	T. Tembo
75	Njoku James	M	JULIUS	PETAUKE	095459757	JULIUS	N. James
76	AFRICA TEMBO	M	NYANKUNWA	PETAUKE	-	NYANKUNWA	A. Tembo
77	GEORGE LUNGU	M	KASONGO	PETAUKE	095596900	KASONGO	G. Lungu
78	BENSON BANDA	M	MATONJE	PETAUKE	-	MATONJE	B. Banda
79	AWARD MUMBA	M	NYANKUNWA	PETAUKE	-	NYANKUNWA	A. Mumba
80	BLACKSON TEMBO	M	NYANKUNWA	PETAUKE	-	NYANKUNWA	B. Tembo
81	FELLOW DAKA	M	NYANKUNWA	PETAUKE	-	NYANKUNWA	F. Daka
82	CHARLES S. SAKALA	M	JULIUS KAMPENDE	PETAUKE	-	J. KAMPENDE	C. Sakala
83	DOCTOR TEMBO	M	NYANKUNWA	PETAUKE	-	NYANKUNWA	D. Tembo
84	PETER PHIRI	M	KASANGA	PETAUKE	-	KASANGA	P. Phiri
85	CHITAYE MUMBA	M	KASANGA	PETAUKE	-	KASANGA	C. Mumba
86	SALUKANI MWANZA	M	MATONJE	PETAUKE	-	MATONJE	S. Mwanza
87	JASON TEMBO	M	JOMBO NSALABVULI	PETAUKE	096581344	JOMBO N	J. Tembo
88	MASALISO SAKALA	M	KASANGA	PETAUKE	-	KASANGA	M. Sakala
89	LENGEZANI PHIRI	M	MATONJE	PETAUKE	0973613343	MATONJE	L. Phiri
90	OBBY BANDA	M	MATONJE	PETAUKE	076446178	MATONJE	O. Banda
91	ISAAC CHIPANDA	M	KASONGO	PETAUKE	076864845	KASONGO	I. Chipanda
92	JAILOS BANDA	M	MATONJE	PETAUKE	0970556505	MATONJE	J. Banda
93	YOTAM LUNGU	M	MATONJE	PETAUKE	078571809	MATONJE	Y. Lungu
94	JOHN PHIRI	M	MATONJE	PETAUKE	076616363	MATONJE	J. Phiri

PETAUKE DISTRICT
ATTENDANCE LIST FOR THE PLUP
COMMUNITY MEETING

VENUE: MATONJE DATE: 13-04-2022

SNO.	NAME	GENDER (M/F)	VILLAGE/DESIGNATION	DISTRICT	CONTACT NO.	EMAIL ADDRESS	SIGNATURE
						matonje	
						matonje	
95	Helen Mwanza	F	matonje	petauke		matonje	
96	Tambala Lungu	F	matonje	petauke		matonje	
97	Miriam Mbulu	F	matonje	petauke		matonje	
98	Grace Lungu	F	nyanza	petauke		nyanza	
99	Flora Jane Tambu	F	matonje	petauke		matonje	
100	Agness Lungu	F	Nyanzuba	petauke		Nyanzuba	
101	Stella Sakala	F	Joamba Misavuli	petauke		Joamba Misavuli	
102	Alice Phiri	F	Nyanza	petauke		nyanza	
103	Lehetina Tambu	F	Nyanza	petauke		Nyanza	
104	Mariane Dawa	F	Nyanzuba	petauke		Nyanzuba	
105	Kaluba Banda	F	Nyanza	petauke		Nyanza	
106	Catherine Mumba	F	Nyanzuba	petauke		Nyanzuba	
107	Catherine Phiri	F	Nyanzuba	petauke		Nyanzuba	
108	Agness Tambu	F	Nyanzuba	petauke		Nyanzuba	
109	Agness Tambu	F	Nyanzuba	petauke		Nyanzuba	
110	Eneles Phiri	F	Nyanza	petauke		matonje	
111	Violet Banda	F	matonje	petauke		matonje	
112	Lizzy Phiri	F	matonje	petauke		matonje	
113	Lidiah Mubanga	F	matonje	petauke		Nyanzuba	
114	Stella Zulu	F	Nyanzuba	petauke			
115	Donalia Lungu	F					

PETAUKE DISTRICT
ATTENDANCE LIST FOR THE PLUP
COMMUNITY MEETING

VENUE: MATONJE DATE: 13/04/2022

SNO.	NAME	GENDER (M/F)	VILLAGE/DESIGNATION	DISTRICT	CONTACT NO.	EMAIL ADDRESS	SIGNATURE
						matonje	
						matonje	
116	Selina Tambu	F	matonje	petauke		matonje	
117	Bacila Mubanga	F	matonje	petauke		matonje	
118	Boby Mumba	F	matonje	petauke		matonje	
119	Margaret Mumba	F	matonje	petauke		matonje	
120	Boniface Phiri	F	matonje	petauke		matonje	
121	Miriam Tambu	F	matonje	petauke		matonje	
122	Ngonzo Tambu	F	matonje	petauke		matonje	
123	Ester Lungu	F	matonje	petauke		matonje	
124	Kaluba Phiri	F	matonje	petauke		matonje	
125	Olivera Lungu	F	matonje	petauke		matonje	
126	Fareli Tambu	F	matonje	petauke		matonje	
127	Charity Phiri	F	matonje	petauke		matonje	
128	Falces Mwanza	F	matonje	petauke		matonje	
129	Rakibara Phiri	F	matonje	petauke		matonje	
130	Shelby Sakala	F	matonje	petauke		matonje	
131	Mumba Nyanzuba	F	matonje	petauke		kasongo	
132	Fareli Tambu	F	kasongo	petauke		kasongo	
133	Silvia Nyanzuba	F	kasongo	petauke		kasongo	
134	Evinya Tambu	F	kasongo	petauke			
135	Laximany Phiri	F					

**PETAUKE DISTRICT
ATTENDANCE LIST FOR THE PLUP
COMMUNITY MEETING**

VENUE: MATONJE DATE: 13/04/2022

SNO.	NAME	GENDER (M/F)	VILLAGE/DESIGNATION	DISTRICT	CONTACT NO.	EMAIL ADDRESS	SIGNATURE
135	Alameda Mwakila	F	Nyankunda	Petauke		Nyankunda	
137	Susaa Yuki	F	Nyankunda	Petauke		Nyankunda	
138	Mary Tembo	F	Nyankunda	Petauke		Nyankunda	
139	Mary Sankala	F	Nyankunda	Petauke		Nyankunda	
140	Mary Tembo	F	Nyankunda	Petauke		Nyankunda	
141	Ester Phiri	F	Nyankunda	Petauke		Nyankunda	
142	Dorothy Phiri	F	Makonde	Petauke		Makonde	
143	Edina Tembo	F	Makonde	Petauke		Makonde	
144	Mariane Tembo	F	Makonde	Petauke		Makonde	
145	Enala Tembo	F	Makonde	Petauke		Makonde	
146	Viola Phiri	F	Makonde	Petauke		Makonde	
147	Esther Tembo	F	Nyamwani	Petauke		Nyamwani	
148	Blessings Phiri	F	Nyankunda	Petauke		Nyankunda	
149	Sabeta Lungu	F	Makonde	Petauke		Nyamwani	
150	Arasa Phiri	F	Nyamwani	Petauke		Makonde	
151	Mable Tembo	F	Makonde	Petauke		Makonde	
152	Suzanna Tembo	F	Makonde	Petauke		Makonde	
153	Fredrick Phiri	F	Makonde	Petauke		Makonde	
154	Mwape Phiri	F	Makonde	Petauke		Makonde	
155	Agnes Mwakila	F	Makonde	Petauke		Makonde	
156	Miriam Mwakila	F	Makonde	Petauke		Makonde	

**PETAUKE DISTRICT
ATTENDANCE LIST FOR THE PLUP
COMMUNITY MEETING**

VENUE: DATE:

SNO.	NAME	GENDER (M/F)	VILLAGE/DESIGNATION	DISTRICT	CONTACT NO.	EMAIL ADDRESS	SIGNATURE
157	JERISON PHIRI	M	MATONJE	PETAUKE	-	MATONJE	
158	JOHN TEMBO Z	M	MATONJE	PETAUKE	097237044	MATONJE	
159	RECHARD TEMBO	M	MATONJE	PETAUKE	097355077	MATONJE	
160	IRACK PHIRI	M	MATONJE	PETAUKE	-	MATONJE	
161	SMART TEMBO	M	MATONJE NYAMWANI	PETAUKE	-	NYAMWANI	
162	JULIUS MBEWE	M	NYANKUNDA	PETAUKE	-	NYANKUNDA	
163	CHRISPWE TEMBO	M	NYANKUNDA	PETAUKE	-	NYANKUNDA	
164							

Validation Meetings

PETAUKE DISTRICT
ATTENDANCE LIST FOR THE PLUP
COMMUNITY MEETING

VENUE: MANKHANGWE DATE: 20/6/2022

SNO.	NAME	GENDER (M/F)	POSITION- VILLAGE	WARD	CONTACT NO.	EMAIL ADDRESS	SIGNATURE
43	Refilwe Daka	M	Mankhanga	Mankhanga			
44	Leleti Mankhanga	M	Mankhanga	"			
45	Frankie Tendo	M	Mankhanga	"			
46	Thato Mankhanga	M	Mankhanga	"			
47	Louise Daka	M	Mankhanga	"	095523003		
48	Vanessa Mankhanga	M	Mankhanga	"	0950196225		
49	Dorcas Mankhanga	M	Mankhanga	"	076669176		
50	Jesus Mankhanga	M	Mankhanga	"	098216777		
51	Frankie Mankhanga	"	"	"			
52	Saulos Tendo	"	"	"			
53	Moto Tendo	"	"	"			
54	Milla Banda	"	"	"			
55	FRANCIS MANKHANGWE	"	"	"			
56	Thomas phiri	"	"	"			T phiri
57	Refilwe Daka	"	"	"			
58	Blackson Tendo	"	"	"			
59	John Banda	"	"	"			
60	CAROL Tendo	"	"	"	096205921		J. B. Chigumba
61	Tanzuwa Mankhanga	"	"	"			
62	TELEITA TENDO	"	"	"	077675075		Tendo
63	WELAZA MANKHANGWE	"	"	"	09623226		

PETAUKE DISTRICT
ATTENDANCE LIST FOR THE PLUP
COMMUNITY MEETING

VENUE: MANKHANGWE DATE: 20/6/2022

SNO.	NAME	GENDER (M/F)	POSITION- VILLAGE	WARD	CONTACT NO.	EMAIL ADDRESS	SIGNATURE
1	Rose Mankhanga	F	Mankhanga	Mankhanga			
2	Gibson Mankhanga	M	Mankhanga	Mankhanga			
3	Anita Banda	F	Mankhanga	Mankhanga			
4	Grace Mankhanga	F	Mankhanga	Mankhanga			
5	Grace phiri	F	Mankhanga	Mankhanga			
6	Eliza Mankhanga	F	Mankhanga	Mankhanga			
7	Chituba Mankhanga	F	Mankhanga	Mankhanga			
8	Tivhaleyi Mankhanga	F	Mankhanga	Mankhanga			
9	Alice Mankhanga	F	Mankhanga	Mankhanga			
10	Charity Mankhanga	F	Mankhanga	Mankhanga			
11	Judith phiri	F	Mankhanga	Mankhanga			
12	Fales phiri	F	Mankhanga	Mankhanga			
13	Alice Mankhanga	F	Mankhanga	Mankhanga			
14	Megret Mankhanga	F	Mankhanga	Mankhanga			
15	Zephania Mankhanga	F	Mankhanga	Mankhanga			
16	Esmeralda Mankhanga	F	Mankhanga	Mankhanga			
17	Mavis Mankhanga	F	Mankhanga	Mankhanga			
18	Nast Mankhanga	F	Mankhanga	Mankhanga			
19	Velesije Mankhanga	F	Mankhanga	Mankhanga			
20	Esther Mankhanga	F	Mankhanga	Mankhanga			
21	Esther Mankhanga	F	Mankhanga	Mankhanga			

PETAUKE DISTRICT
ATTENDANCE LIST FOR THE PLUP
COMMUNITY MEETING

VENUE: Mankungwe DATE: 20/06/2022

SNO.	NAME	GENDER (M/F)	POSITION	WARD	CONTACT NO.	EMAIL ADDRESS	SIGNATURE
62	Socice phiri	F	Mankungwe	Mankungwe			
63	Julia Mwanza	F	Julias	Mankungwe			
64	Faith Tembo	F	Mankungwe	Mankungwe			
67	Annex Tembo	F	Mankungwe	Mankungwe	09722253		
68	Esther Mphahlele	F	Julias	Mankungwe	096360111		
69	Chesche Mphahlele	F	Julias	Mankungwe			
70	Lance Mankungwe	F	Mankungwe	Mankungwe			
71	Margret Saka	F	Mankungwe	Mankungwe			
72	Abner Tembo	F	Mankungwe	Mankungwe			
73	Esther Tembo	F	Mankungwe	Mankungwe			
74	Eliza Mwanza	F	Julias	Mankungwe			
75	Theresa Tembo	F	Mankungwe	Mankungwe			
76	Esther Saka	F	Mankungwe	Mankungwe			
77	Chiluba Mumba	F	Mankungwe	Mankungwe			
78	Libiana Tembo	F	Mankungwe	Mankungwe			
79	Maganthema Mumba	F	Mankungwe	Mankungwe			
80	Akiline Saka	F	Mankungwe	Mankungwe			
81	Edna Mumba	F	Mankungwe	Mankungwe			
82	Catherine Mumba	F	Mankungwe	Mankungwe			
83	Ngoni phiri	F	Mankungwe	Mankungwe			
84	Lucy Tembo	F	Mankungwe	Mankungwe			

PETAUKE DISTRICT
ATTENDANCE LIST FOR THE PLUP
COMMUNITY MEETING

VENUE: Mankungwe DATE: 20/06/22

SNO.	NAME	GENDER (M/F)	POSITION	WARD	CONTACT NO.	EMAIL ADDRESS	SIGNATURE
85	Pheliso Mphahlele	F	Mankungwe	Mankungwe	0155118183		
87	Konjane Mumba	F	Mankungwe	Mankungwe			
88	Esther Tembo	F	Mankungwe	Mankungwe	0156240134		
89	Esther phiri	F	Mankungwe	Mankungwe			
90	Memery Mwanza	F	Mankungwe	Mankungwe			
91	Nyoni phiri	F	Mankungwe	Mankungwe			
92	Esther Xulu	F	Mankungwe	Mankungwe			
93	Cherise Saka	F	Mankungwe	Mankungwe			
94	Velona Mwanza	F	Julias	Mankungwe			
95	Theresa Mumba	F	Mankungwe	Mankungwe			
96	Esther Mumba	F	Mankungwe	Mankungwe	0133806995		
97	Annex Saka	F	Mankungwe	Mankungwe			
98	Esther Tembo	F	Julias	Mankungwe			

PETAUKE DISTRICT
ATTENDANCE LIST FOR THE PLUP
COMMUNITY MEETING

VENUE: Mankungwe

DATE: 20/06/22

SNO	NAME	GENDER (M/F)	POSITION	WARD	CONTACT NO.	EMAIL ADDRESS	SIGNATURE
22	Samuela Muzimba	F	JULIAS	Mankungwe	0972604487		
23	Mary Muzimba	F	Mankungwe	Mankungwe			
24	Esther Muzimba	F	JULIAS	Mankungwe	0933495015		
25	Mavis Muzimba	F	Mankungwe	Mankungwe			
26	Mary Muzimba	F	Mankungwe	Mankungwe			
27	Esther Muzimba	F	Mankungwe	Mankungwe			
28	Agnes Muzimba	F	Mankungwe	Mankungwe			
29	Mavis Muzimba	F	Mankungwe	Mankungwe			
30	Esther Muzimba	F	Mankungwe	Mankungwe			
31	Christina Muzimba	F	Mankungwe	Mankungwe			
32	Mavis Muzimba	F	Mankungwe	Mankungwe			
33	Mavis Muzimba	F	Mankungwe	Mankungwe			
34	Mavis Muzimba	F	Mankungwe	Mankungwe	0966504278		
35	Mavis Muzimba	F	Mankungwe	Mankungwe			
36	Felice Muzimba	F	JULIA	Mankungwe			
37	Ruth Muzimba	F	Mankungwe	Mankungwe			
38	Margret Muzimba	F	Mankungwe	Mankungwe	0956339446		
39	Mavis Muzimba	F	Mankungwe	Mankungwe			
40	Sara Muzimba	F	Mankungwe	Mankungwe			
41	Patricia Muzimba	F	JULIA	Mankungwe			
42	Tasira Muzimba	F	Mankungwe	Mankungwe			

PETAUKE DISTRICT
ATTENDANCE LIST FOR THE PLUP
COMMUNITY MEETING

VENUE: Mankungwe

DATE: 20/06/2022

SNO	NAME	GENDER (M/F)	POSITION	WARD	CONTACT NO.	EMAIL ADDRESS	SIGNATURE
99	Dalia Muzimba	F	KALINDI	Mankungwe			
100	Tasira Muzimba	F	Mankungwe	Mankungwe			
101	Esther Muzimba	F	Mankungwe	Mankungwe			
102	Sandra Muzimba	F	Mankungwe	Mankungwe			
103	Tasira Muzimba	F	Mankungwe	Mankungwe	0955852087		
104	Dalia Muzimba	F	Mankungwe	Mankungwe			
105	SIEVEN Muzimba	M	JULIAS	Mankungwe	0953397437		
106	MANDISE Muzimba	M	Mankungwe	Mankungwe	0770563316		
107	Tasira Muzimba	F	Mankungwe	Mankungwe			

PETAUKE DISTRICT
ATTENDANCE LIST FOR THE PLUP
COMMUNITY MEETING

VENUE: SANTANA (MUNYAMA VILLAGES) DATE: 21/06/2022

SNO.	NAME	GENDER (M/F)	VILLAGE / POSITION	WARD	CONTACT NO.	EMAIL ADDRESS	SIGNATURE
1	SEKELANI LUMGU	MA	NAALONA	MANYANE			
2	MARGIE LUMGU	MA	NAALONA	MANYANE	07746004	07700411	
3	WILSON PHIRI	MA	MALIMA	MANYANE	0771566017		M. Wilson
4	PATRICK TERABO	MA	MALIMA	MANYANE	098273019		M. Terabo
5	MASONIA NAZOU	MA	NAALONA	MANYANE	097773470		
6	MWELWA MOKUBI	MA	NAALONA	MANYANE	077730008		
7	MANSION MUKATSA	MA	NAALONA	MANYANE	0977919009		
8	MOMIE MUKATSA	MA	NAALONA	MANYANE	097777311		
9	KAVANZA R. PHIRI	MA	NAALONA	MANYANE			M. Phiri
10	SPADROCK SAKANA	MA	KALONGA	MANYANE	095833310		S. Sakana
11	STEPHEN MUKATSA	MA	MALIMA ZA	MANYANE	095833310		
12	AJILE LUMGU	MA	MALIMA ZA	MANYANE	077730073		
13	JAMES PHIRI	MA	MALIMA	MANYANE	077759164		
14	STEPHEN PHIRI	MA	KABAMBA	MANYANE	0774208790		
15	EDWIN MUKATSA	MA	NAALONA	MANYANE			
16	LOVENMORE LUMGU	MA	NAALONA	MANYANE	0972665441		
17	ANGROMI TAMBWA	MA	NAALONA	MANYANE	0977905407		
18	MWELWA NGULUBO	MA	KABAMBA	MANYANE			

PETAUKE DISTRICT
ATTENDANCE LIST FOR THE PLUP
COMMUNITY MEETING

VENUE: CHIZARA DATE: 21/06/2022

SNO.	NAME	GENDER (M/F)	VILLAGE / POSITION	WARD	CONTACT NO.	EMAIL ADDRESS	SIGNATURE
18	CAPHAS PHIRI	MA	ZUMANI	MANYANE	0974418700		K. Phiri
19	ACKSON ZULU	MA	ZUMANI	MANYANE	097081993		A. Zulu
20	SHUTAS ZULU	MA	ZUMANI	MANYANE	097733877		
21	ISACK TOMBO	MA	MYAMONA	MANYANE	096603340		
22	SYRUSTAN ZULU	MA	CHANDISANI				
23	WISIBAN LUMGU	MA	CHANDISANI				
24	BLADWILL TOMBO	MA	CHANDISANI		0977221550	0970201350	
25	LORDWILL PHIRI	MA	CHANDISANI				
26	EDDSON MUKATSA	MA	CHANDISANI				
27	BASTIN SAKANA	MA	CHANDISANI		0950456011		
28	RICHARD ZULU	MA	ZUMANI				
29	ITUS TOMBO	MA	MALIMA				
30	FRED ZULU	MA	CHANDISANI		0952678284		
31	KARINIA MUKATSA	MA	CHANDISANI				
32	GABIZANI TOMBO	MA	ZUMANI		0979232831		
33	MWANZA TAMBWA	MA	ZUMANI		0961528719		

PETAUKE DISTRICT
ATTENDANCE LIST FOR THE PLUP
COMMUNITY MEETING

VENUE: CHIZWA DATE: 21/06/22

SNO.	NAME	GENDER (M/F)	VILLAGE/POSITION	WARD	CONTACT NO.	EMAIL ADDRESS	SIGNATURE
1	Itinenezi Phiri	F	Gidoni	Mangochi			
2	Maryam Daka	F	Chikende	Mangochi			
3	Grace Mumbwa	F	Chikende	Mangochi			
4	Mary Mumbwa	F	Chikende	Mangochi			
5	Fabris Mumbwa	F	Chikende	Mangochi			
6	Fanus Mumbwa	F	Chikende	Mangochi			
7	Atledi Sakala	F	Zumani	Mangochi			
8	Atlesi Banda	F	Zumani	Mangochi			
9	Encesi Mumbwa	F	Chikende	Mangochi	095039040		
10	Monica Phiri	F	Chikende	Mangochi			E. Mumba
11	Leyisi Banda	F	Chikende	Mangochi			M. Piri
12	Takwe Daka	F	Chikende	Mangochi			Z. Daka
13	Idath Daka	F	Muzgonwa	Mangochi	075523005		
14	Idadi Tembo	F	Nyakumwa	Mangochi			I. Tembo
15	Anna Mumbwa	F	Chikende	Mangochi	095835295		
16	Ngawa Daka	F	Zumani	Mangochi			
17	Elina Daka	F	Zumani	Mangochi	095380847		

PETAUKE DISTRICT
ATTENDANCE LIST FOR THE PLUP
COMMUNITY MEETING

Mangochi Ward

Validation and
Jonis G

VENUE: SANJAMA DATE: 21/06/2022

SNO.	NAME	GENDER (M/F)	VILLAGE/POSITION	WARD	CONTACT NO.	EMAIL ADDRESS	SIGNATURE
19	Florene Mumbwa	F	Malima	Mangochi	0957639160		
20	Fabris Mumbwa	F	Malima	Mangochi			
21	Anna Mumbwa	F	Mangochi	Mangochi	077952875		
22	Fanus Daka	F	Mumbwa	Mangochi			
23	Zeliza Daka	F	Kabani, Kg	Mangochi			
24	Avelina Tembo	F	Malima	Mangochi			
25	Bernat Daka	F	Malima	Mangochi			
26	Amstoria Tembo	F	Malima	Mangochi	077076482		
27	Misoti Sakala	F	Mangochi	Mangochi			
28	Enatzen Tembo	F	Malima	Mangochi	077048827		
29	Rosmary Tembo	F	Malima	Mangochi			
30	Ruth Mumbwa	F	Malima	Mangochi			
31	Edith Phiri	F	Malima	Mangochi	0976797945		E. Phiri
32	Esther Sakala	F	Malima	Mangochi			
33	Adressi Phiri	F	Mangochi	Mangochi	0974657009		
34	Ieliza Lungu	F	Malima	Mangochi	0970113469	F. Lungu	T. Lungu
35	Itinenezi Phiri	F	Malima	Mangochi			
36	Fabris Mumbwa	F	Malima	Mangochi			
37	Mangochi Mumbwa	M	Kabani/Mangochi	Mangochi	0770886915		

Mamungu
Ward

PETAUKE DISTRICT
ATTENDANCE LIST FOR THE PLUP
COMMUNITY MEETING

Validation and
Jonis

VENUE: Matonge

DATE:

SNO.	NAME	GENDER (M/F)	VILLAGE / POSITION	WARD	CONTACT NO.	EMAIL ADDRESS	SIGNATURE
S0	SHADRACK ZULU	M	NYALUNDA	MANYANE	017787519		S. Zulu
S1	MILTON BANIPE	M	MATONJE	MANYANE	097436699		M.C.
S2	DAVID YANBANI	M	MATONJE	MANYANE	0727723523		D. Yanbani
S3	AGWANI MUKALEA	M	MATONJE / NDUMA	"	"		A. Agwani
S4	MALLOANI DAKA	M	JULIUS	"	071860172		M. Malloani
S5	BEST K PHIRI	M	MATONJE	"	077433534		B. Phiri
S7	LEONARD PHIRI	M	"	"	0976505076		L. Phiri
S9	CHRISTOPHER KUNDI	M	CHIKWIKWE	"	"		C. Kundi

Mamungu
Ward

PETAUKE DISTRICT
ATTENDANCE LIST FOR THE PLUP
COMMUNITY MEETING

Validation and
Jonis

VENUE: MATONJE COMMUNITY

DATE:

SNO.	NAME	GENDER (M/F)	VILLAGE / POSITION	WARD	CONTACT NO.	EMAIL ADDRESS	SIGNATURE
29	FACUSO ZULU	M	MATONJE	MANYANE			F. Zulu
30	CALINE BANS PHIRI	F	NYANZANA	MANYANE	095537792		C. Phiri
31	ECHLOW DAKA	M	NYANKULWA	MANYANE			E. Daka
32	LINDIWAZI LURAO	M	MATONJE	MANYANE			L. Lurao
33	PAPER NGORAB	M	CHIKWIKWE	MANYANE	0974299111		P. Ngorab
34	ASTALU PHIRI	M	MATONJE	MANYANE			A. Phiri
35	DORAFAGE LURAO	M	MATONJE	MANYANE	0976323246		D. Lurao
36	LE-CHIZANI PHIRI	M	MATONJE	MANYANE	0718625243		L. Phiri
37	ABEL TEMBO	M	MATONJE	MANYANE	0953209979		A. Tembo
38	ISAAC NGORAB	M	WASONGWA B	MANYANE	0977179111		I. Ngorab
39	SAMSON BANDA	M	MATONJE B	MANYANE	0976478050		S. Banda
40	BRASHO TONDO	M	MATONJE	"	0971801149		B. Tondo
41	ELIASHI DANDA	M	MATONJE	"	"		E. Danda
42	PETER TONDO	M	MATONJE	"	0960214644		P. Tondo
43	MWASHE PHEI	M	MATONJE	"	0974142874		M. Phe
44	BERNARD TEMBO	M	JULIUS	"	"		B. Tembo
45	ISANGU LURAO	M	MATONJE	MANYANE	092455509		I. Lurao
46	THOMAS M. AMANDA	M	RYANZA	MANYANE	097318947		T. Amanda
47	JAYDI TONDO	M	JULIUS	MANYANE	0973653571		J. Tondo
48	DICKY TONDO	M	MATONJE	MANYANE			D. Tondo
49	PAULSON BANDA	M	NYANZANA	MANYANE	0997271265		P. Banda

Mangochi Ward

PETAUKE DISTRICT
ATTENDANCE LIST FOR THE PLUP
COMMUNITY MEETING

Validation and
Signing

VENUE: MATOPIA

DATE: 21/06/2022

SNO.	NAME	GENDER (M/F)	VILLAGE / POSITION	WARD	CONTACT NO.	EMAIL ADDRESS	SIGNATURE
22	Magnole Zulu	F	Kalanga	Mangochi	-	-	-
23	Helen Mwanza	F	Kalanga	Mangochi	-	-	-
24	Grace Makoma	F	Matonle	Mangochi	0953529802	-	-
25	Grace Lungu	F	Matonle	Mangochi	-	-	-
26	Mary Lungu	F	Matonle	Mangochi	-	-	-
27	Belina Tembwa	F	Matonle	Mangochi	0953300058	-	-
28	Emelia Mwanza	F	Matonle	Mangochi	-	-	EPhiri

3

Mangochi Ward

PETAUKE DISTRICT
ATTENDANCE LIST FOR THE PLUP
COMMUNITY MEETING

Validation and
Signing

VENUE: MATOPIA

DATE: 21/06/2022

SNO.	NAME	GENDER (M/F)	VILLAGE / POSITION	WARD	CONTACT NO.	EMAIL ADDRESS	SIGNATURE
1	Mawira Mubiru	F	Matonle	Mangochi	-	-	-
2	Paula Banda	F	Matonle	Mangochi	-	-	M. Mubiru
3	Chiona Mwanza	F	Matonle	Mangochi	-	-	-
4	Elizabeth Phiri	F	Matonle	Mangochi	-	-	-
5	Callista Chawwa	F	Matonle	Mangochi	-	-	-
6	Falesi Kausa	F	Kalanga	Mangochi	-	-	-
7	Amusatapo Tembwa	F	Chibale	Mangochi	-	-	-
8	Anna Tembwa	F	Matonle	Mangochi	-	-	-
9	Ethelali Mumbwa	F	Matonle	Mangochi	-	-	-
10	Ernest Lungu	F	Matonle	Mangochi	-	-	-
11	Lorenes Daka	F	Matonle	Mangochi	-	-	-
12	Cecilia Tembwa	F	Julius Kampanje	Mangochi	0976289140	-	-
13	Lucia Tembwa	F	Kalanga	Mangochi	-	-	C. Tembwa
14	Adelina Mumbwa	F	Kalanga	Mangochi	-	-	-
15	Febay Sakala	F	Matonle	Mangochi	-	-	-
16	Judith Tembwa	F	Julius Kampanje	Mangochi	-	-	-
17	Rosemary Phiri	F	Kalanga	Mangochi	-	-	-
18	Rosta Phiri	F	Matonle	Mangochi	-	-	-
19	Mary Phiri	F	Matonle	Mangochi	-	-	-
20	Mamath Mabwe	F	Tombo Salawali	Mangochi	-	-	-
21	Paula Phiri	F	Matonle	Mangochi	-	-	-